



DIVISION OF WATER

300 Sower Boulevard, Frankfort, KY 40601

Phone: 502.564.3410

Sarah Gaddis, Act. Director

John Webb, Assistant Director

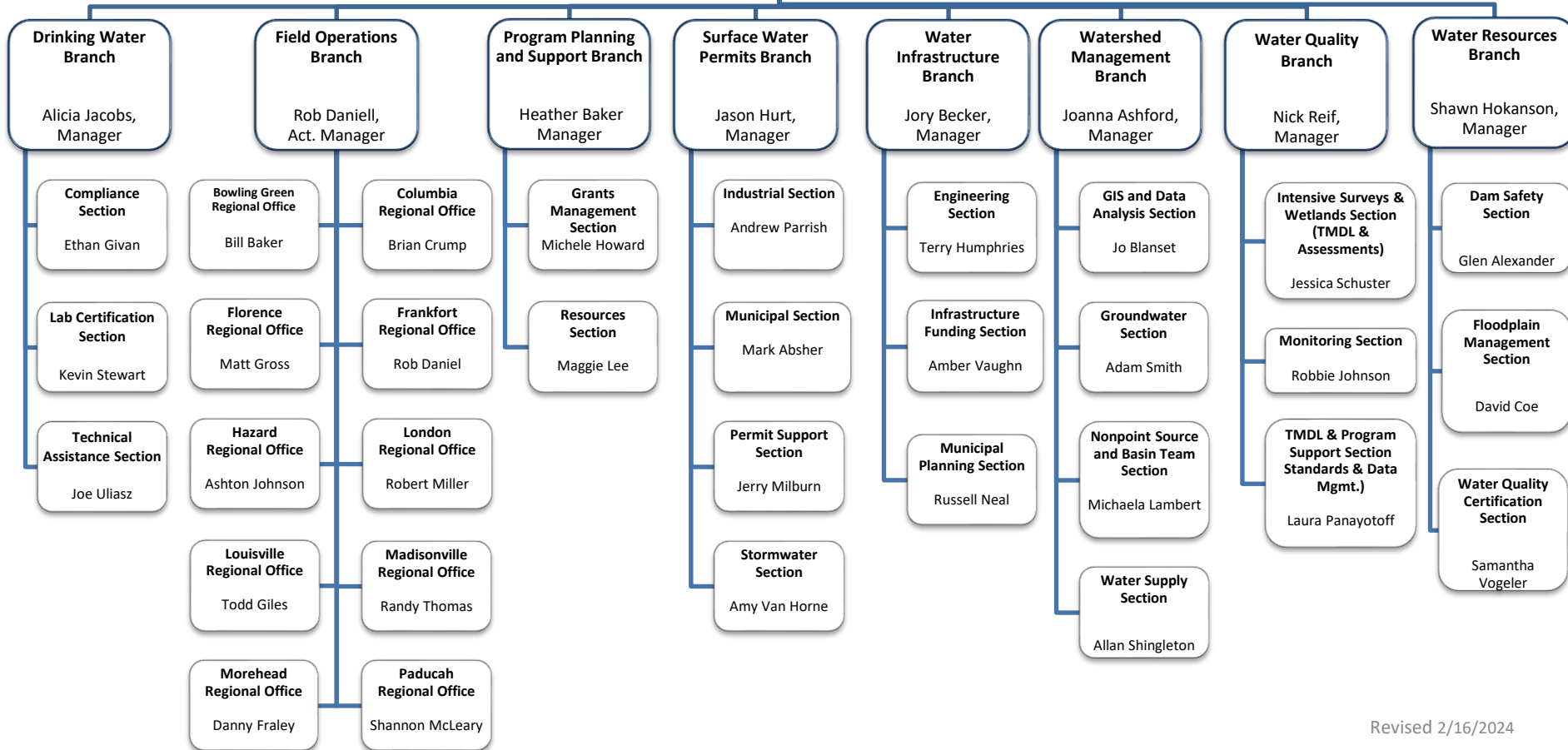
Melanie Arnold, Env Sci Consultant II

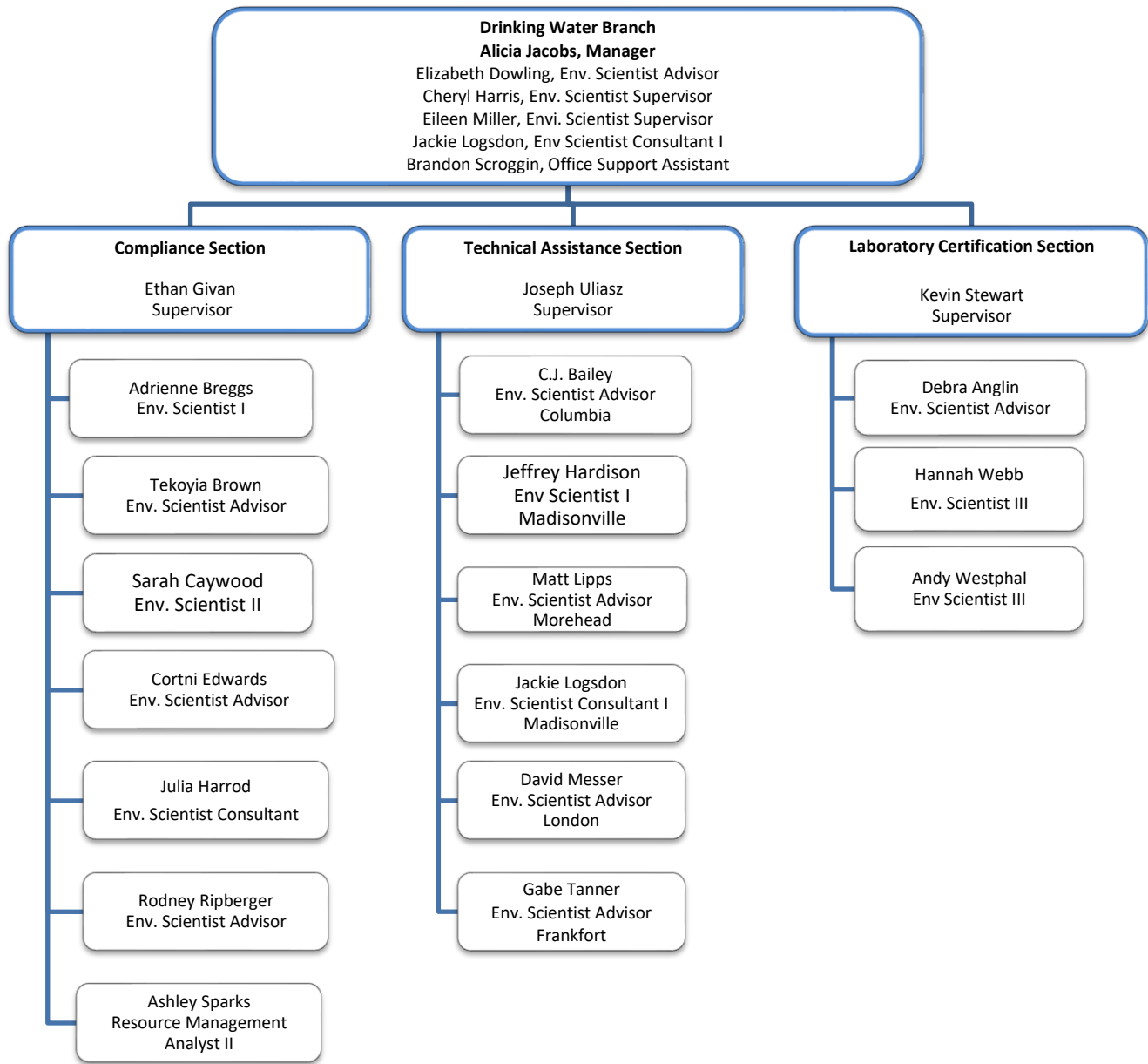
John Carlton, Admin Spec III

Carole Catalfo, Policy Specialist

Josiah Frey, I Env Sci Consultant I

Sarah Gaddis, Env. Scientist Consultant II





Field Operations Branch
Rob Daniell, Act. Manager

Stefanie Osterman, Env Scientist
Lorrie Rhodes, Program Coordinator
Andrew Wooldridge, Env. Scientist II

**Bowling Green
Field Office**

Bill Baker
Supervisor

**Columbia
Field Office**

Brian Crump
Supervisor

**Florence
Field Office**

Matt Gross
Supervisor

**Frankfort
Field Office**

Rob Daniell
Supervisor

**Hazard
Field Office**

Ashton Johnson
Supervisor

Bruce Hatcher
Env. Scientist IV

Michael Horn
Env. Scientist Advisor

Curtis McDaniel
Env. Scientist III

Thomas Nicotera
Geologist III

Bobbie Jo Tabor
Co-Op/ intern

Dwayne Barnes
Env. Scientist Advisor

Cynthia Brumitt
Env. Scientist Advisor

Logan Phelps
Env. Scientist III

Jamie Powell
Admin. Specialist III

Jason Stephens
Env. Scientist Advisor

Abigail Harris
Env. Scientist III

Jeffrey Malsi
Env. Scientist Advisor

Adam Smith
Env. Scientist II

Anna Young
Env. Scientist II

John Hanks
Env. Scientist Advisor

Jarod Jones
Env. Scientist II

Deborah Singleton
Env. Scientist Advisor

Jerry Back
Env. Scientist III

Robert Back
Env. Scientist Advisor

Skylar Campbell
Env Scientist I

Joshua George
Env. Scientist Advisor

Lonnie Klopp
Env. Scientist Advisor

Wade Maggard
Env. Scientist Advisor

**Field Operations Branch cont.
Rob Daniell, Act. Manager**

Stefanie Osterman, Env Scientist
Lorrie Rhodes, Program Coordinator
Andrew Wooldridge, Env. Scientist II

**London
Field Office**

Robert Miller
Supervisor

Walter Brumley
Env. Scientist I

Eddie Paige
Env. Scientist III

Kendra Tincher
Admin. Specialist III

Beth Trent
Env. Scientist Advisor

Ryan Wilson
Env. Scientist Advisor

**Louisville
Field Office**

Todd Giles
Supervisor

Sarah Duker
Env Scientist III

Jody Eilers
Env. Scientist Advisor

Bridgett Miniard
Env. Scientist I

Sara Stewart
Env. Scientist III

**Madisonville
Field Office**

Randy Thomas
Supervisor

Lindsey Bibbee
Env. Scientist Advisor

Zack Meuth
Env. Scientist

Amanda Ray
Env. Scientist I

April Rich
Env. Scientist II

Bruce Sampson
Env. Scientist Advisor

**Morehead
Field Office**

Danny Fraley
Supervisor

James Bevins
Env Scientist Advisor

Ashley Bowen
Env. Scientist Advisor

Corey Craft
Env. Scientist Advisor

Corrina Middleton
Admin. Specialist III

Thomas Nelson
Geologist III

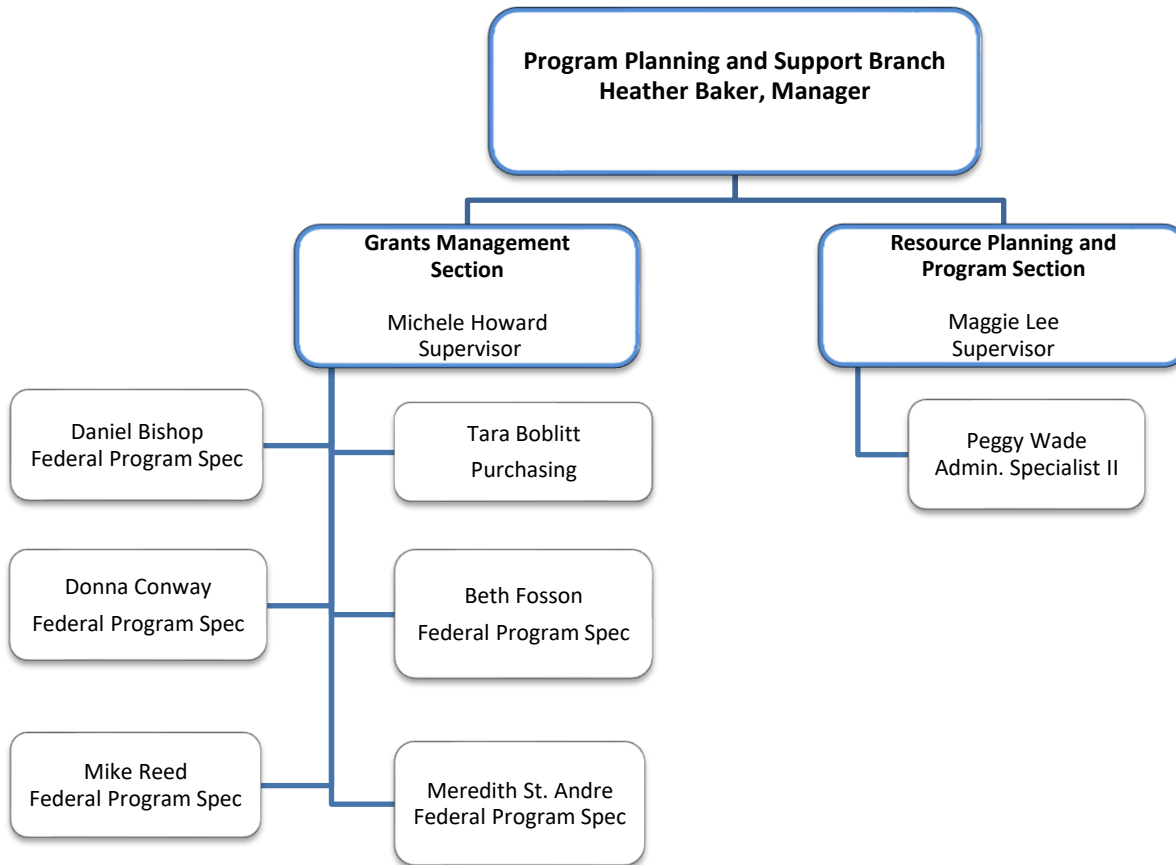
**Paducah
Field Office**

Shannon McLeary
Supervisor

Zack Campbell
Environmental Scientist III

Madeline Traylor
Env. Scientist Advisor

Jessie York
Env. Scientist Advisor



Surface Water Permits Branch
Jason Hurt, Manager

Barry Elmore, Env. Engineer Consultant
Greg Goode, Env. Engineer Consultant
Robin Snider, RMA III

Industrial Section

Andrew Parrish
Supervisor

Tyler Cook
Env. Scientist Advisor

Matthew Fields
Env. Scientist Advisor

Brenda Pecheco
Env. Engineer Technologist I

Abbas Pourghasemi
Env. Engineer Technologist II

Ronnie Thompson
Env. Scientist Advisor

Permit Support Section

Jerry Milburn
Supervisor

Crystal Dennis
RMA II

Joy Haden
Program Coordinator

Jake Stapleton
RMA I

Stormwater Section

Amy Van Horne
Supervisor

JP Beard
Env. Scientist III

Rebecca Graves
Env. Scientist Advisor

Ethan Lewis
Env. Scientist I

Paul Tangel
Env. Engineer Technologist I

Jennifer Thompson
Env. Scientist Advisor

Shannon Urbanik
Env. Eng. Technologist II

Municipal Section

Mark Absher
Supervisor

Paul Bridges
Env. Engineer II

Sam Burns
Env. Engineer Technologist. I

Lucas Hanks
Env. Scientist Advisor

Abby Rains
Env. Scientist Advisor

Mays Zaidan
Env. Eng. Technologist I

Water Infrastructure Branch
Jory Becker, Manager
Mark Rasche, Env. Engineer Consultant

Engineering Section
Terry Humphries
Supervisor

Cassie Campbell
Env. Engineer II

Lissa Doss
Program Coordinator

Daniel Kulik
Env. Engineer II

Amanda Mikuski
Env Eng Technologist I

Brett Thompson
Env. Eng Technologist I

Municipal Planning Section
Russell Neal
Supervisor

Angela Billings
Env Scientist Advisor

Lori Dials
Env. Scientist Advisor

Jason Lambert
Env. Scientist Advisor

Ryan Reed
Env. Scientist Advisor

Nia Rivers
Env. Scientist IV

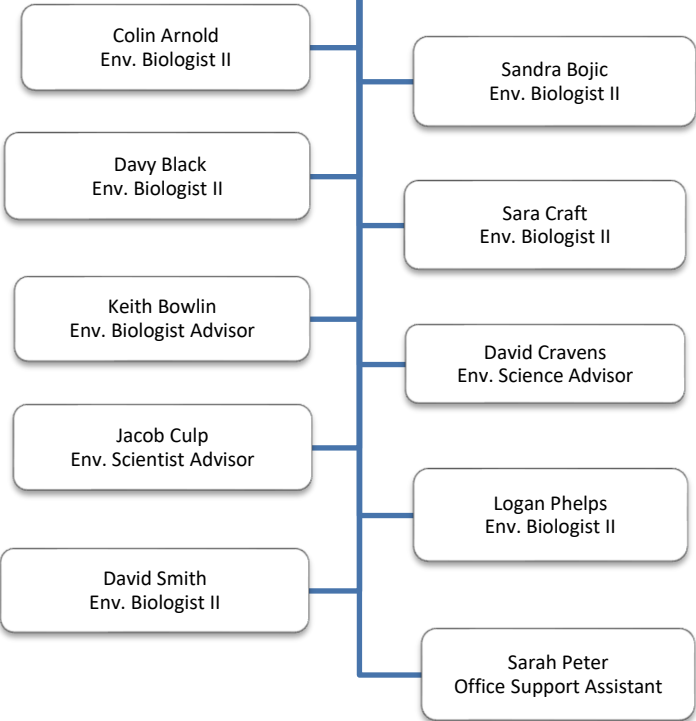
Infrastructure Funding Section
Amber Vaughn
Supervisor

Luke Morgan
Grants Administrator

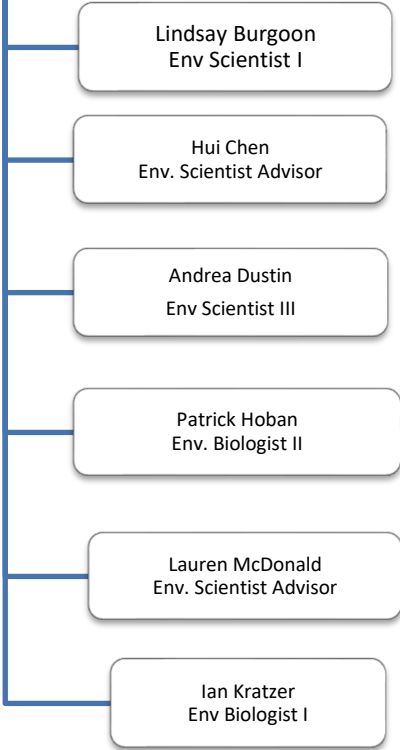
Mercy Osuala
Grants Administrator

Water Quality Branch
Nick Reif, Branch Manager
Andrea Fredenburg, Env. Scientist Consultant I
Katie McKone, Env. Scientist Consultant I

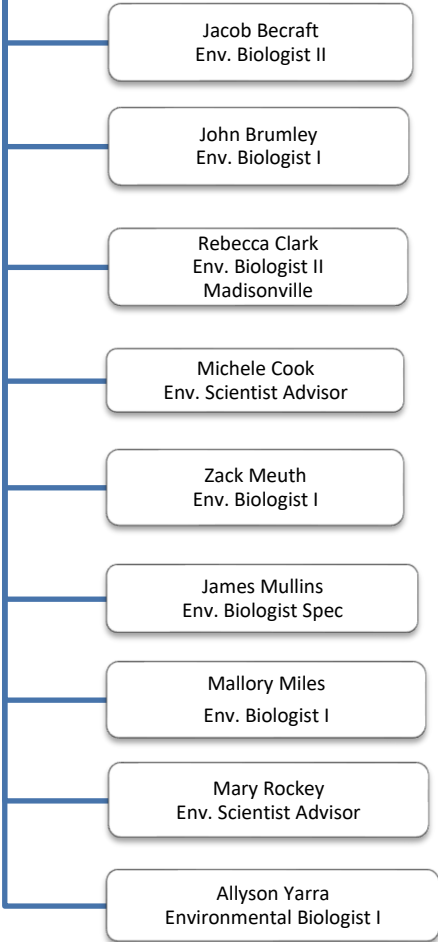
Monitoring Section
Robert Johnson
Supervisor



**TMDL and Program Support Section
(Standards and Data Management Section)**
Lara Panayotoff
Supervisor



**Intensive Surveys & Wetlands
(TMDL & Assessments Section)**
Jessica Schuster
Supervisor



**Water Resources Branch
Shawn Hokanson, Manager**

Kaycie Len Carter, Env Scientist Consultant
Alex VanPelt, Env. Scientist Advisor

Dam Safety Section

Glen Alexander
Supervisor

Beth Harrod
Env Engineer II

Marilyn Thomas
Env. Engineer II

Gabriel Singleton
Office Support Assistant

Floodplain Management Section

David Coe
Supervisor

Kathy Allen
Env. Scientist III

Soheyl Bigdeli
Env. Engineer Technologist I

Kate Carigan
Env. Scientist III

Solitha Dharman
Env. Engineer II

Water Quality Certification Section

Samantha Vogeler
Supervisor

Morgan Bishop
Env. Biologist I

Conner Flora
Env. Biologist I

Kristine Gauthier
Env. Scientist I

Michael Heyn
Environmental Scientist Advisor

Bryan Killian
Environmental Scientist II

Watershed Management Branch
Joanna Ashford, Manager

Paulette Akers, Env. Scientist Advisor
Caroline Chan, Env. Scientist Consultant I
Bill Caldwell, Env. Scientist Consultant I
Josiah Frey, Env. Scientist V
Jill Wilhelm, Admin. Spec. III

GIS & Data Analysis Section

Jo Blanset
Supervisor

Jim Seay
Geoprocessing Spec III

Wes Turner
Env Scientist Advisor

Melissa Widman
Geo. Specialist III

Samuel Sapeta
Geo Specialist I

Groundwater Section

Adam Smith
Supervisor

Tim Collins
Env. Scientist IV

Aisha Malik
Geologist I

Bronson McQueen
Geologist II

Kurtis Spears
Geologist III

Nonpoint Source & Basin Team Section

Michaela Lambert
Supervisor

Nate Alexander
Env. Scientist I

Haileigh Arnold
Env. Scientist I

Chelsea Durbin
Env. Scientist Advisor

Colin Duncan
Env. Scientist I

Will Goodman
Geoprocessing Spec 2

Amber Hawkins
Env. Scientist Advisor

Alice Mandt
Env. Scientist Advisor

Jo Ann Palmer
Program Coordinator

Brian Storz
Env. Scientist III

Water Supply Section

Alan Shingleton
Supervisor

Dale Booth
Env. Scientist Advisor

Rita Hockensmith
Resource Mgmt. Analyst III

Ryan Parks
Geologist I

Chip Zimmer
Env. Scientist Advisor