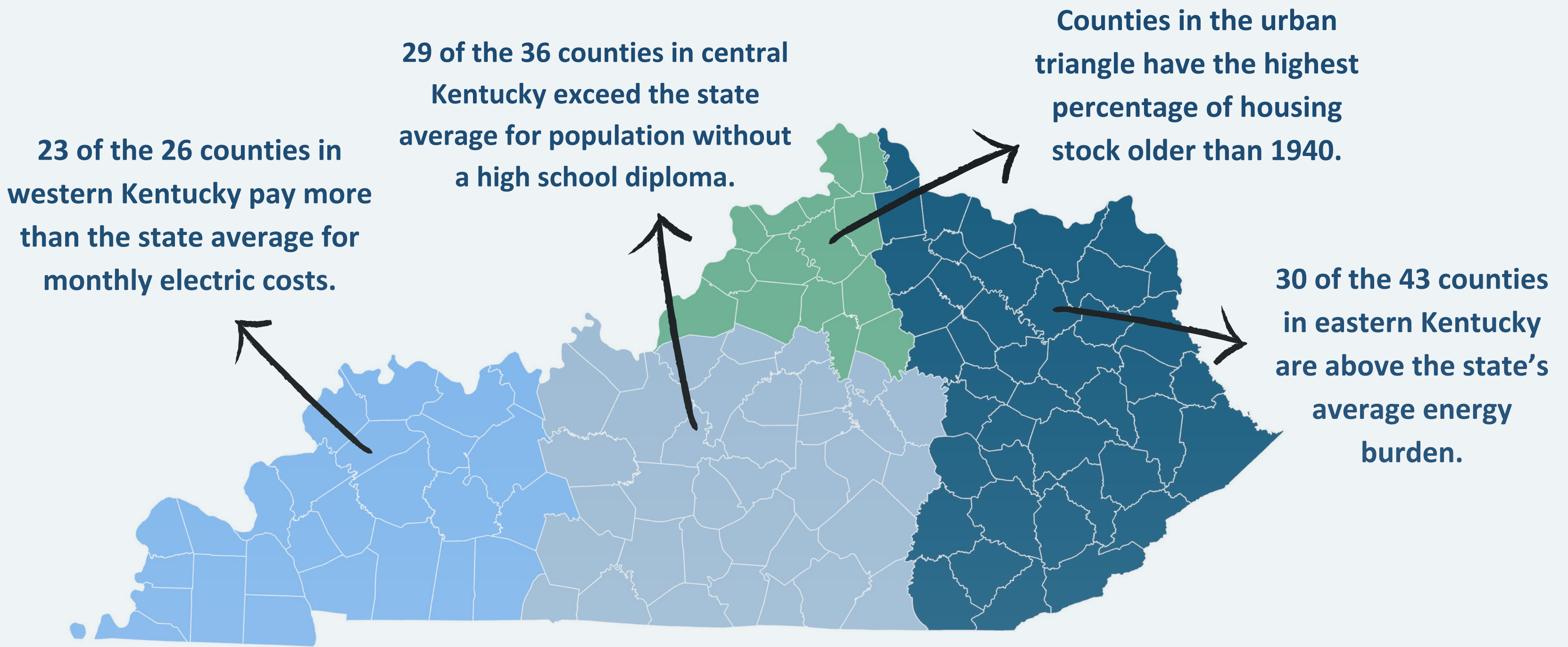


# Kentucky Energy Affordability

Affordable Energy, Sustainable Futures: Let's Power Up Together!



## Key Metrics

### Energy Burden

Average energy burden, the percent of a household's gross income spent on energy needs, is 3% and 8% for the total population and low-income population, respectively.

### Educational Attainment

The average attainment of high school diplomas in Kentucky's working age population, ages 18-64, is 85%. Associates degree attainment is 26% and 18% for Bachelor's degree or higher.

### Manufactured Housing Stock

Manufactured housing accounts for nearly 17% of all occupied housing in the state. The majority of the manufactured housing are located in the eastern part of the state and consist of older, less energy efficient housing stock.

### Monthly Utilities

Kentuckians, on average, pay \$391 a month for electric, gas, water and other fuel utilities. Since 2017, utilities have seen a 33% increase in monthly costs.

## Trends in Affordability

### Higher Poverty Level -> Higher Energy Burden

Counties where the population below poverty level is greater than 19% tend to have energy burdens higher than the state average.

### Lower Education Attainment -> Higher Energy Burden

In Kentucky, counties that have a working age population with less than 85% high school graduates tend to be above the state's average energy burden.

### Older Manufactured Housing -> Higher Energy Burden

In counties where manufactured housing makes up at least 25% of the housing stock, energy burden tends to be higher than the state average. Today's manufactured housing is more energy efficient which can alleviate energy burden.

### Higher Utility Costs -> Higher Energy Burden

In counties where the average monthly utility costs are higher than the state average, energy burden tends to be higher than the state average as well.