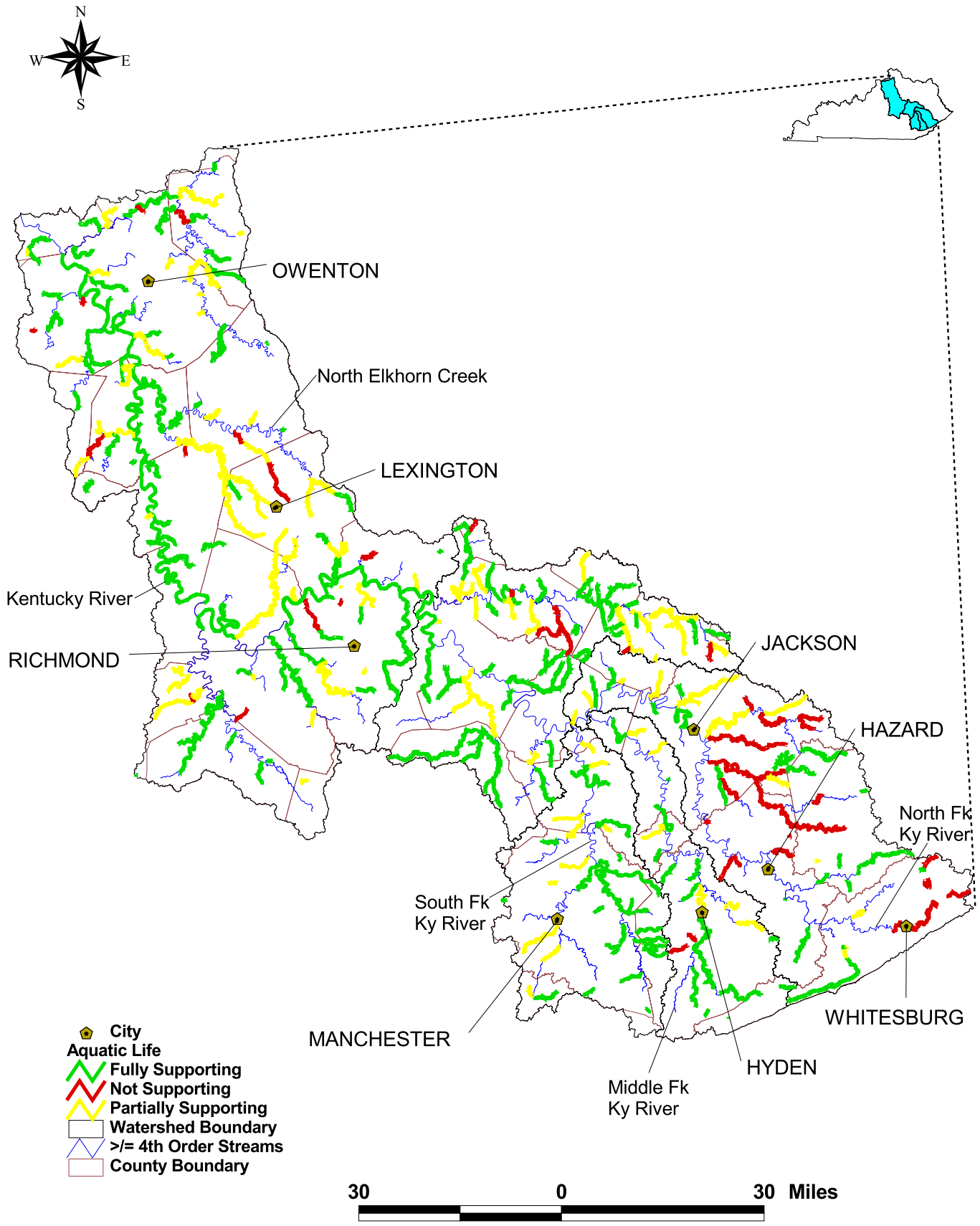
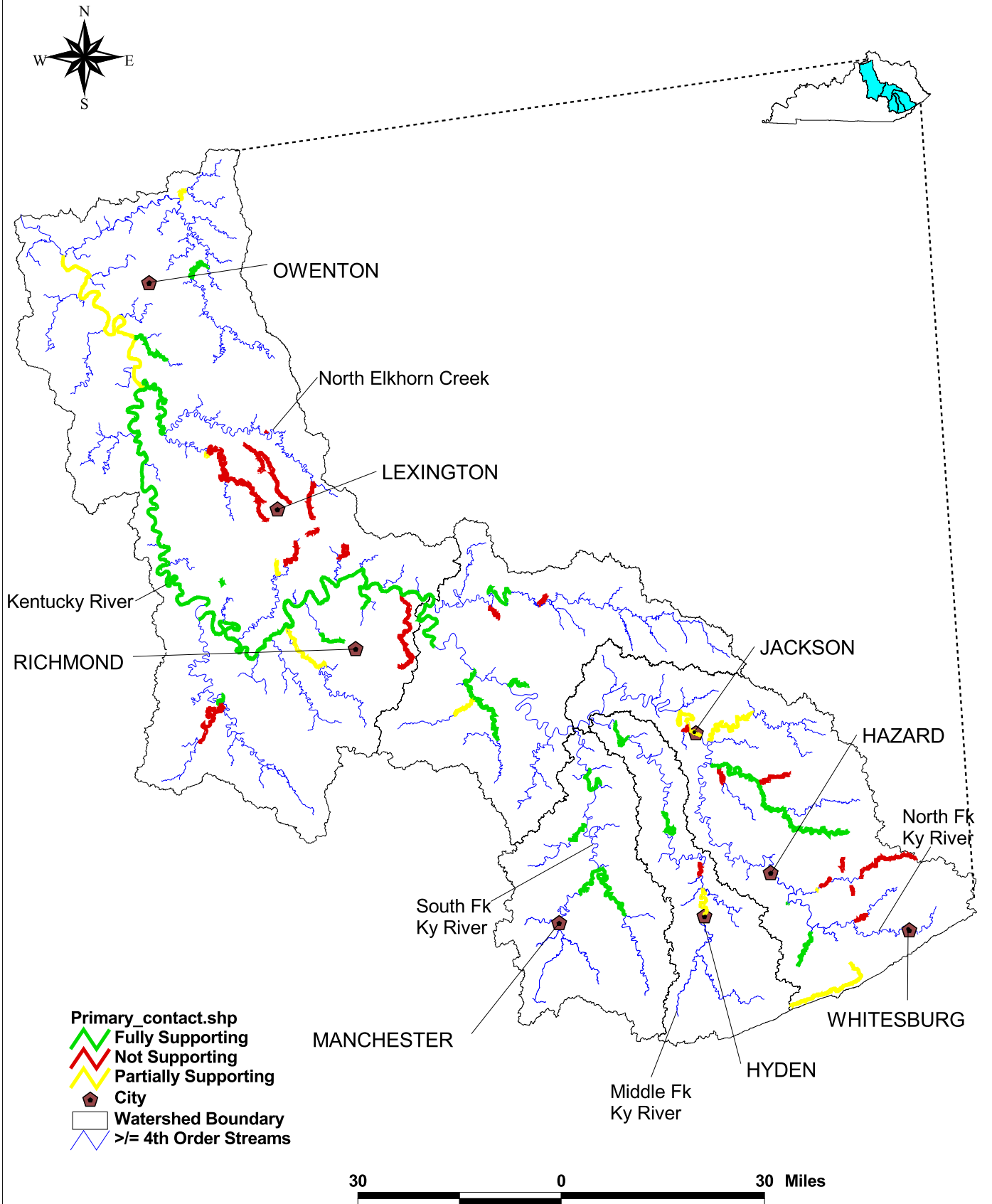


Figure B-1. Reach indexing results of streams assessed in the Kentucky River Basin for Aquatic Life Use.



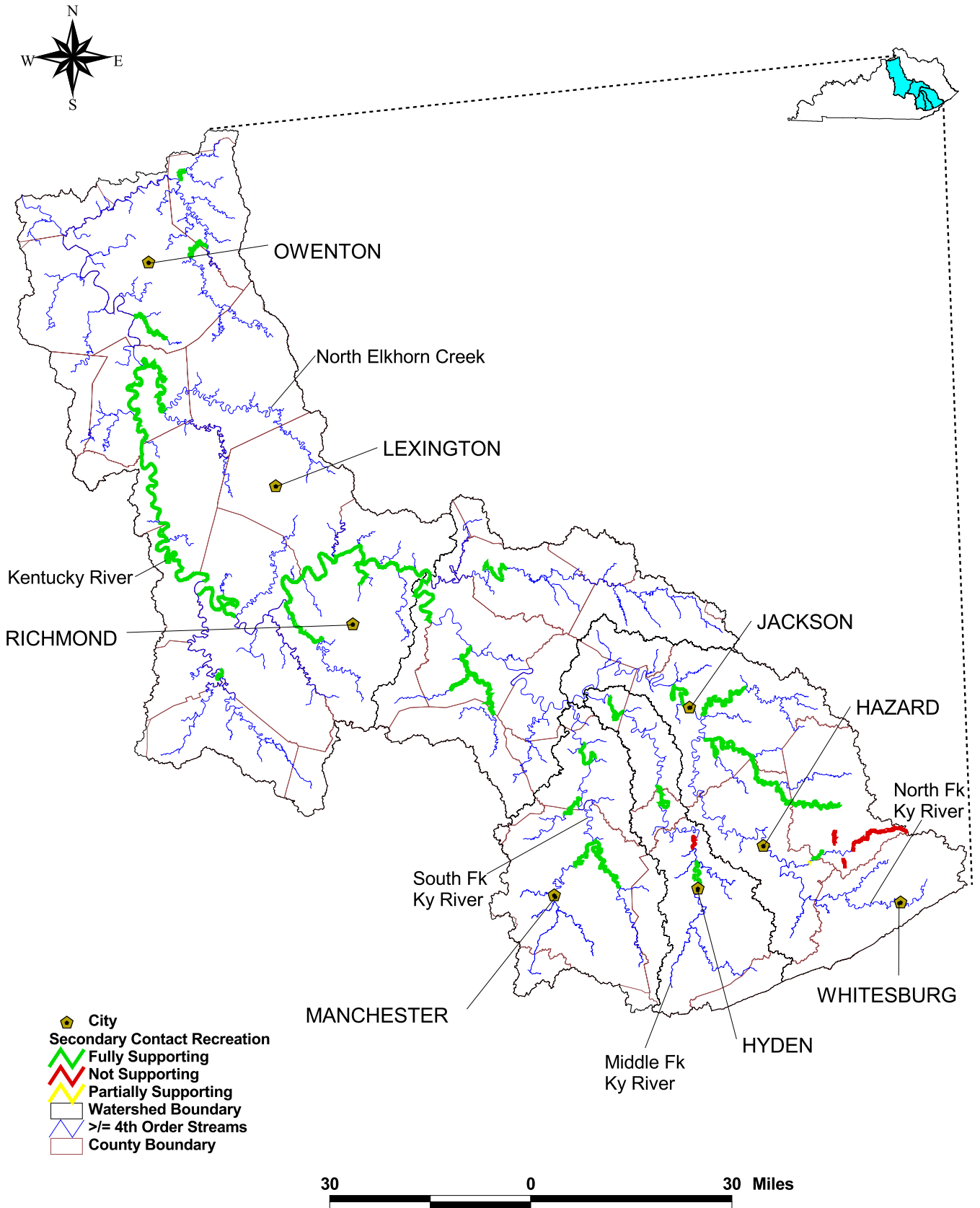
Source 2006 305(b) Report

Figure B-2. Reach indexing results of streams in the Kentucky River Basin for Primary Contact Recreation Use.



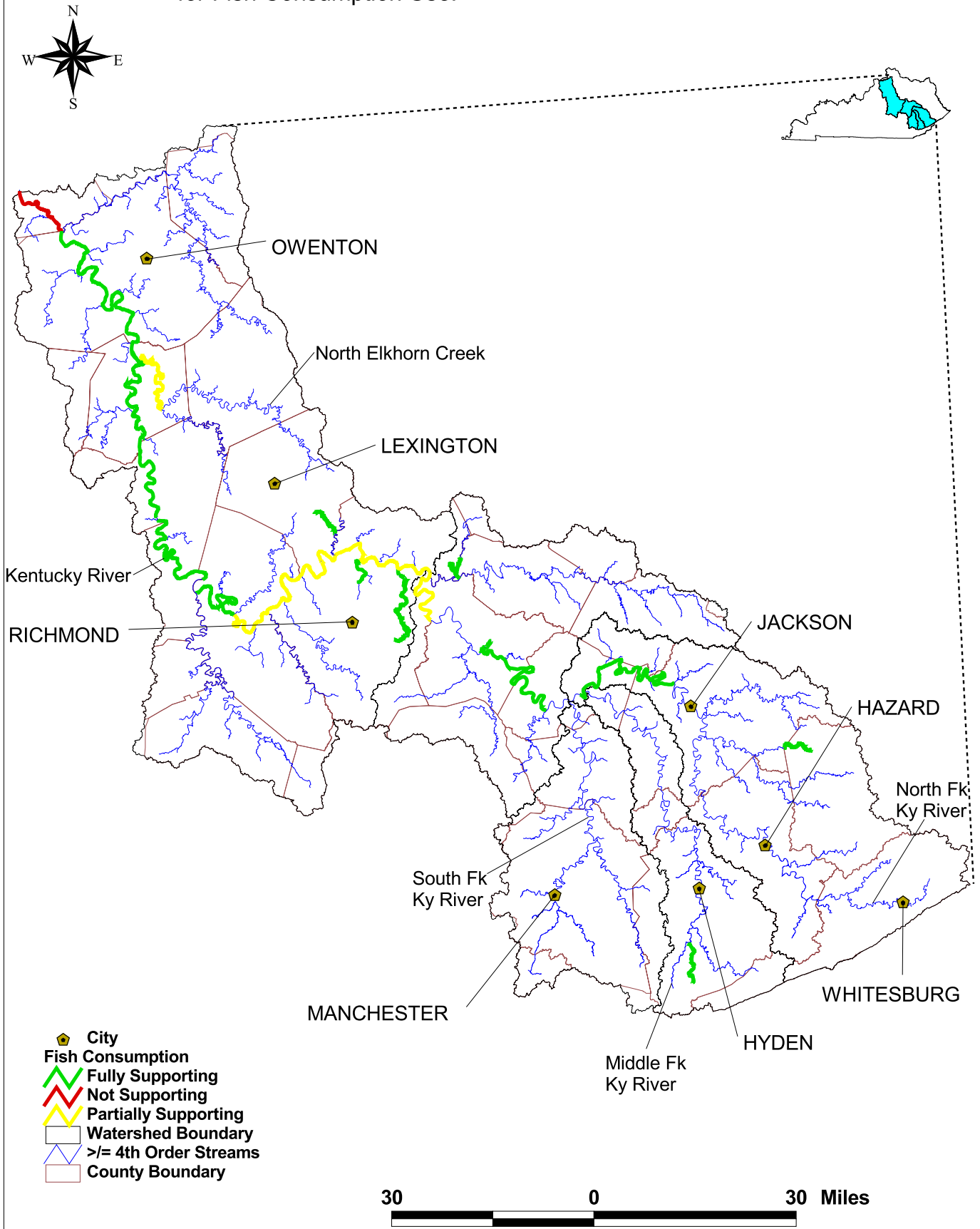
Source 2006 305(b) Report

Figure B-3. Reach indexing results of streams assessed in the Kentucky River Basin for Secondary Contact Recreation Use.



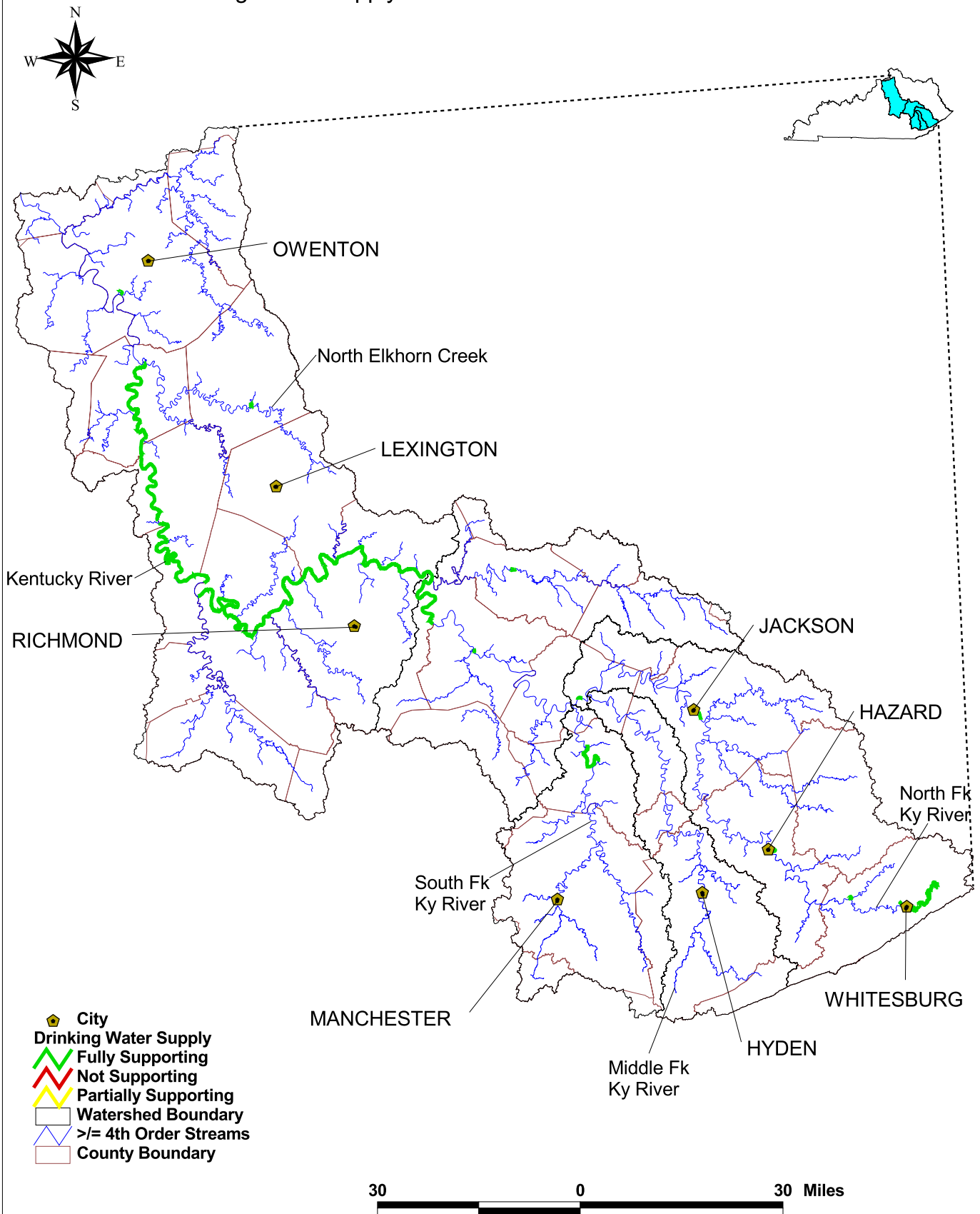
Source 2006 305(b) Report

Figure B-4. Reach indexing results of streams assessed in the Kentucky River Basin for Fish Consumption Use.



Source 2006 305(b) Report

Figure B-5. Reach indexing results of streams assessed in the Kentucky River Basin for Drinking Water Supply Use.



Source 2006 305(b) Report