



DCA

KENTUCKY DIVISION OF COMPLIANCE ASSISTANCE

CERTIFYING PROFESSIONALS | LIVING GREENER | SIMPLIFYING COMPLIANCE

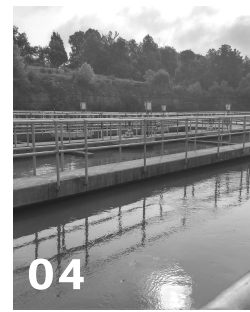
ANNUAL REPORT 2018

table of contents

02 The Director's Note



03 Mission, Vision, Objectives



04 Certifying Professionals



05 Operator Certification Program



11 Simplifying Compliance

12 Environmental Compliance Assistance Program

17 Living Greener



18 KY EXCEL Program

25 Brownfield Redevelopment Program



DCA

300 Sower Boulevard
Frankfort, KY 40601
502-782-6189
Envhelp@ky.gov
www.dca.ky.gov

The Director's Note

It is with great pleasure that I present the Division of Compliance Assistance's (DCA) FY 18 Annual Report. Everyday our staff members proactively assist communities, businesses and individuals to not only meet their obligations to protect Kentucky's environment, but to go above and beyond those regulatory requirements to serve as environmental leaders. This interplay between compliance and sustainability can reap substantial positive impacts for Kentucky's air, water and land resources, not to mention the overall health of our citizens and the economy.

Certifying Professionals- The division continued to provide education and licensing services to the state's drinking water, wastewater and solid waste professionals. Despite being short staffed, we successfully trained 1,211 operators and processed 3,534 application for certification or renewal. Staff have also been working with partner agencies to help address the looming operator shortage as the baby boom generation begins to retire.

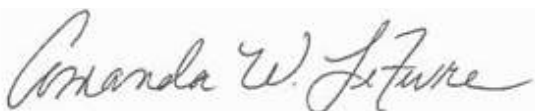
Simplifying Compliance- Environmental regulations can be difficult to understand and that may be especially true for small business operations that don't have in-house expertise to deal with permitting issues and environmental standards. This year the Environmental Compliance Assistance Program increased the number of its scheduled educational events in order to provide more learning opportunities and is currently exploring new avenues for online learning.

Living Greener and Growing Stronger- This year saw the Kentucky Brownfield Redevelopment Program issue its first Cleaner Commonwealth Fund Loan to Botanica's Waterfront Botanical Garden Project in Louisville. This funding will help safely redevelop a former landfill site into a world-class botanical garden which will provide education and recreation opportunities as well as direct and indirect, positive economic benefits. The program will look to make a second loan in the coming fiscal year.

KY EXCEL saw record participation in its Sustainable Spirits Summit which brings Kentucky's distilling industry players together to share experience and knowledge of efforts to make the industry greener and cleaner. The program will look to include both the brewing and winery sectors in the next Sustainable Spirits Events in Fall of 2018.

So, I invite you to learn more about the efforts of our staff and partner agencies over the past year. Thank you for the opportunity to serve Kentucky and its citizens. We look forward to the coming year and the possibilities it brings.

Sincerely,



Amanda LeFevre
Director, Division of Compliance Assistance

Mission

The Division of Compliance Assistance exists to provide services that increase environmental knowledge and change behaviors. We do this to improve regulatory compliance, achieve exceptional performance and enhance the quality of Kentucky's environment and communities.

Vision

The Division of Compliance Assistance will influence environmental stewardship throughout Kentucky. Kentucky's citizens will routinely trust the Division as an important source of accurate and timely environmental information. Our proactive and innovative efforts will inspire others to take positive actions that improve the health of our citizens and enhance the quality of our environment.

Objectives

Certify qualified environmental professionals

We will certify select environmental professionals to maximize appropriate actions and effective operations at regulated locations.

Help entities comply with Kentucky's environmental requirements

We will assist and educate regulated entities so they understand and comply with their environmental obligations.

Facilitate environmental stewardship

We will assist, educate and encourage Kentucky's citizens so they make informed choices that value Kentucky's environment and create healthier, stronger communities.



CERTIFYING PROFESSIONALS

Having access to safe drinking water is something that most of us take for granted. In other parts of the world, safe drinking water is rare. Wastewater treatment is not a daily concern in our busy lives. A few centuries ago, disease was rampant because little was known about the correct way to handle wastewater.

The Operator Certification Program provides certification training, continuing education and licensing for the operators of drinking water, wastewater and solid waste facilities in Kentucky. The services of the Certification and Licensing Branch ensure operators have the skills and knowledge needed to perform the duties of their positions and protect Kentucky's environment and the public.

Operator Certification Program



Operator Certification Branch Staff

Manager

Jessica Wilhoite

Administration

Katie Mauer
Veronica Roland
Chelsey Jenkins

Trainers

Dennis Minch
Eric Eisiminger
John Walker



May Distribution School

Trainer, Dennis Minch, presents to a full class.

ADMINISTRATION

The men and women who treat our water and wastewater and manage our solid waste are on the front lines of protecting human health and the environment. For instance, a water treatment plant operator has the potential to impact the health of more people in a community on a daily basis than a local doctor. The staff of the Certification and Licensing Branch spend thousands of hours processing and reviewing applications submitted from drinking water, wastewater and solid waste operators to ensure they meet the educational and experience standards required for their level of certification. During FY18, the branch received and processed 1,057 applications from operators seeking to take a certification exam.



DID YOU KNOW?

From 2016 to 2026, BLS projects 10.6 percent of water workers each year on average to either permanently leave (i.e. retire) or transfer out of their current jobs..

SOURCE: BUREAU OF LABOR STATISTICS

BOARD SUPPORT

Serving in an advisory capacity, the Kentucky Board of Certification of Water Treatment and Distribution System Operators and the Kentucky Board of Certification of Wastewater System Operators assist the agency in the implementation of the operator certification program. The board reviews applications, reciprocity requests, proposed regulation revisions, third-party training submittals and operator disciplinary action requests. During FY18, the boards reviewed 130 Class IV certification examination request.

INVOLVEMENT

With the passage of the Clean Water Act in 1972 and the Safe Drinking Water Act of 1974 came the hiring of thousands of water and wastewater operators across the country. The retirement of that initial wave of operators is looming. It is estimated that over half of the nation's drinking water and wastewater operators will retire over the next ten years, leaving a huge service gap in the profession.

The operator certification program and its staff have worked to educate operators, facility managers and city officials about proactive workforce planning. Presentations were made at Regional Water Management Councils housed in Area Development Districts, Public Service Commission training events, the KY TN Water and Environment Association Water Professionals Conference, the Kentucky Rural Water Management Conference and to partner organization workgroups addressing the issue with KY DEP.

DCA leads the Operator Recruitment and Development Subcommittee of the Drinking Water and Wastewater Advisory Council. The group focuses on joint efforts to encourage more people to explore careers in the water industry.

Staff also participated in the Joint Drinking Water Wastewater Advisory Council, the Lead and Copper Subcommittee, the Association of State Drinking Water Officials Annual Conference and the EPA's Multi-Regional Capacity Development and Operator Certification Workshop.

RENEWAL

All operators are required to renew their licenses every two years. The drinking water renewal cycle took place during the past fiscal year. The operator certification program administrative staff sent postcards to more than 2,900 certified operators reminding them of the renewal cycle. The program issued 3,611 wallet cards for wastewater and drinking water certification.

Electronic submittal continues to be popular and effective for operators and our staff. Ninety-nine percent of the renewals were submitted electronically, saving over fifty-nine days of administrative processing time.

KRWA Management Conference

Below: Veronica Roland and Katie Mauer, OpCert Staff



CERTIFICATION

During FY18, the Operator Certification Program administered 992 exams that resulted in the issuance of 292 new or upgraded wastewater licenses, 339 new or upgraded drinking water licenses and 91 new solid waste licenses. The drinking water program had a pass rate of 71%, the wastewater program had a pass rate of 71% and the solid waste program had a pass rate of 91%.

TRAINING

The Operator Certification and Licensing Branch provides training for the Commonwealth's drinking water, wastewater and solid waste operators. Both certification classes and continuing education classes are offered across the state. Topics include new technologies, permits, regulatory requirements and issues related to water and wastewater treatment and distribution and solid waste management.

In FY18, the program conducted 28 training events providing more than 426 credit hours and had 1,079 participants. The Certification and Licensing boards reviewed 357 submittals from third-party training providers and approved over 456 education hours.

OPERATION MATTERS BLOG

In February 2012, the Operator Certification and Licensing Branch created the Operation Matters Blog to help distribute timely information and tools to operators who serve the Commonwealth of Kentucky. Since that time, the blog has reached beyond Kentucky's borders to over 169 countries. Last year, the blog received 32,086 views and had 22,642 visitors. The blog has 141 active followers and received over 197,900 views since its inception.

DW Groundwater Class

Below: Trainer, John Durbin, explains a groundwater system.





operator certification

TRAINING EVENTS



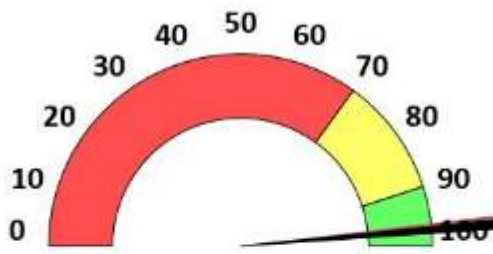
34

ATTENDEES TRAINED



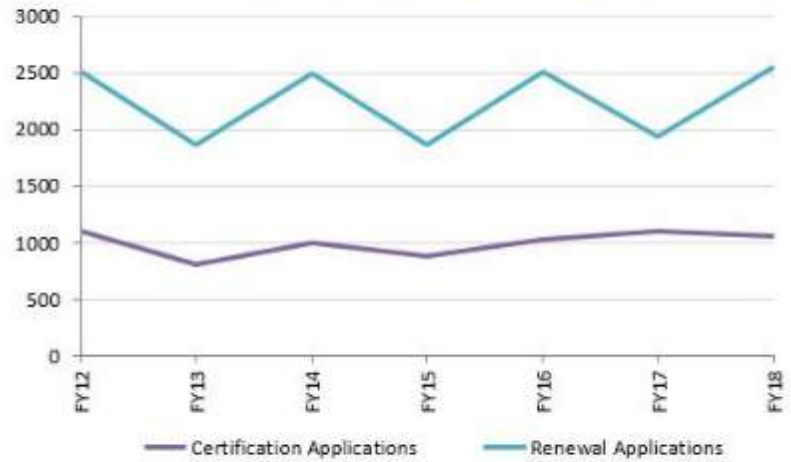
1,115

ATTENDEE TRAINING SATISFACTION



97%

APPLICATIONS RECEIVED



APPLICATION PROCESSING TIME



EXAM PASS RATES



BOARD REVIEW - CLASS 4 APPLICATIONS



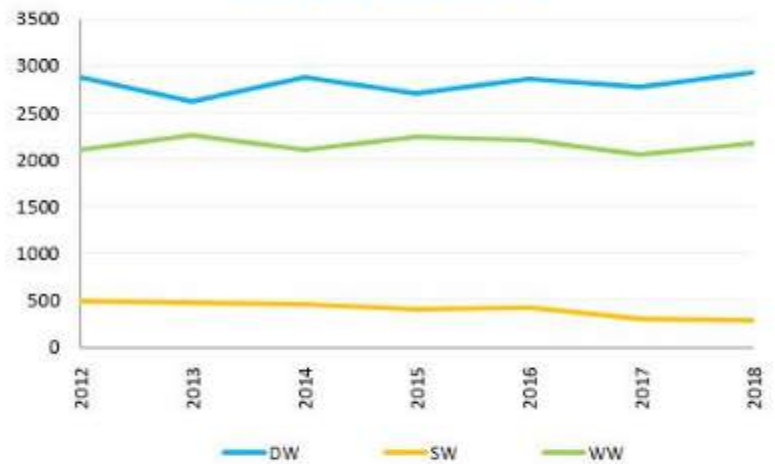
OPERATOR DISCIPLINARY ACTION REVIEWS



TRAINING REQUESTS REVIEWED BY THE CERTIFICATION BOARDS



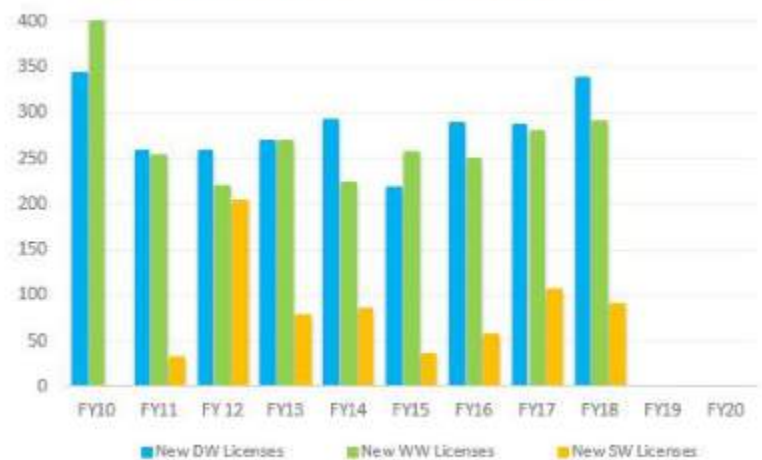
ACTIVE LICENSES



TRAINING HOURS APPROVED BY THE CERTIFICATION BOARDS

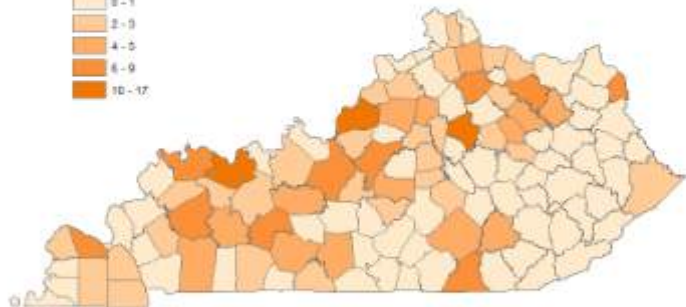
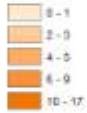


NEW & UPGRADED LICENSES

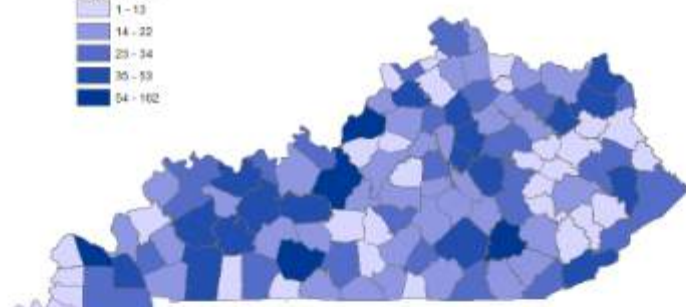
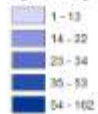


OPERATOR AVAILABILITY

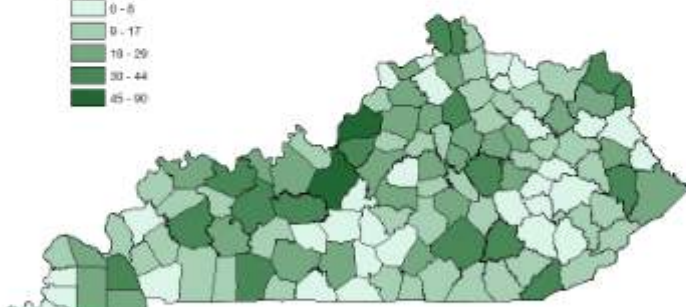
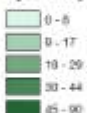
Solid Waste Operators by County



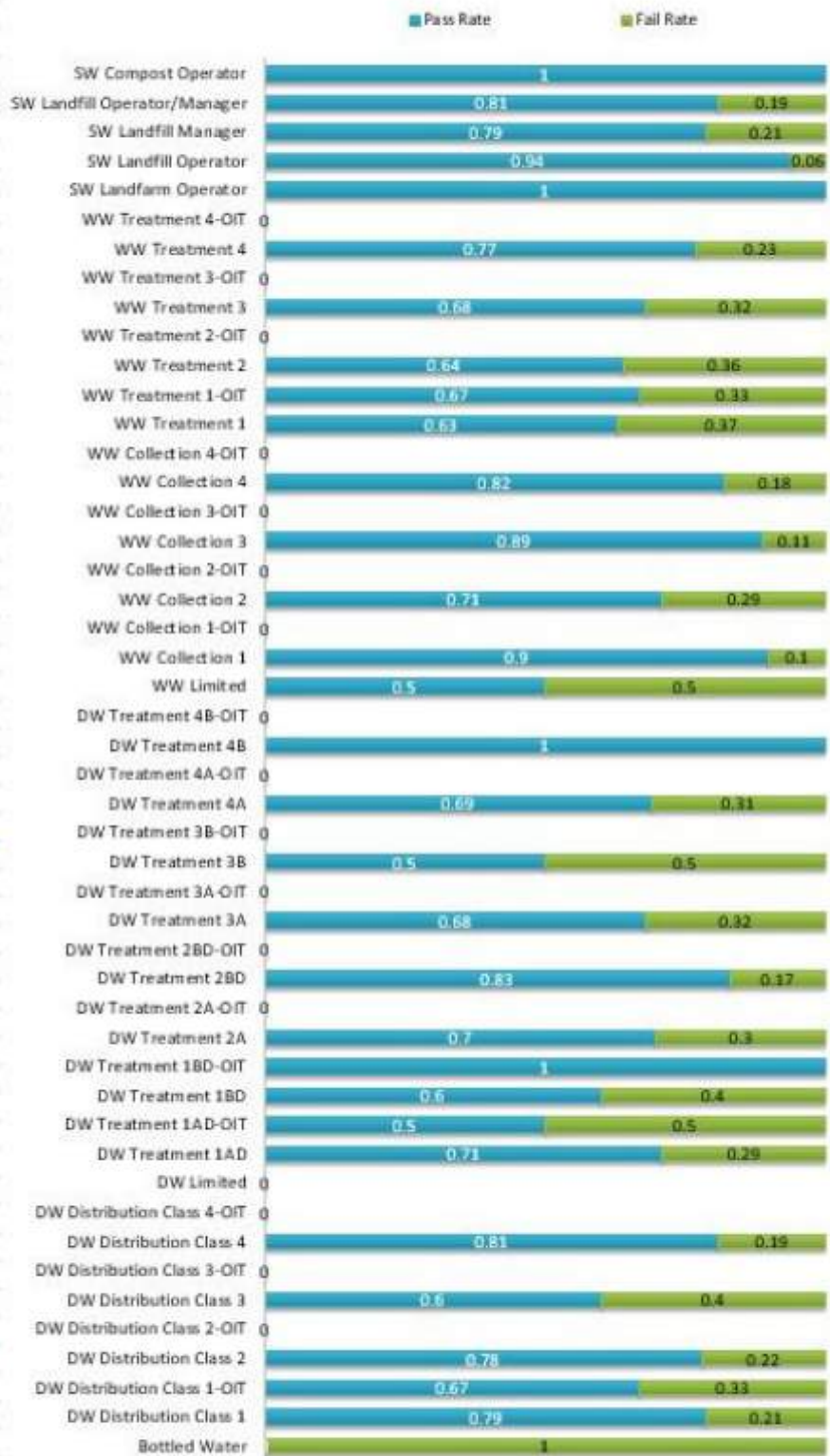
Drinking Water Operators by County

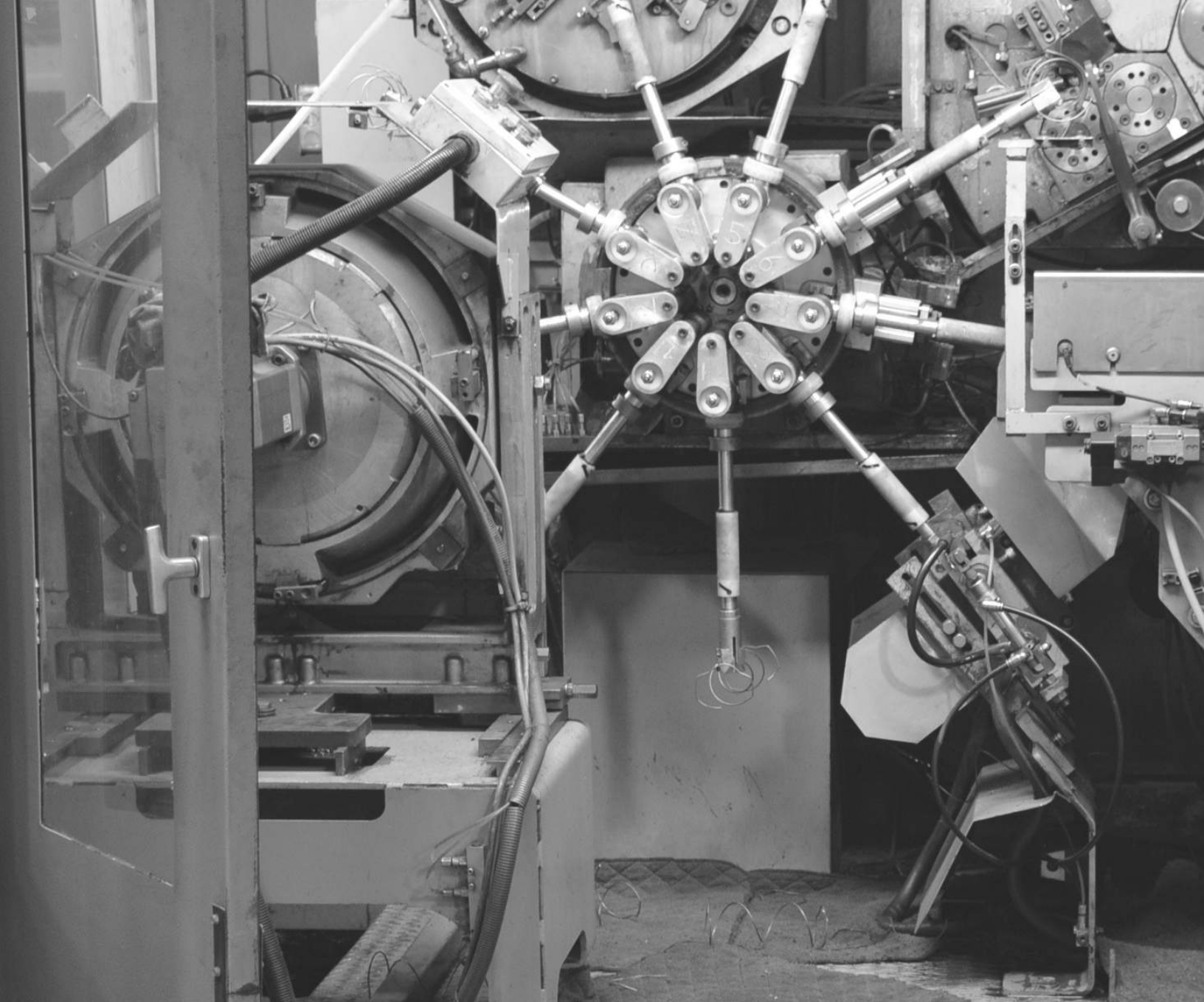


Wastewater Operators by County



FY18 PASS - FAIL RATES





SIMPLIFYING COMPLIANCE

Understanding and complying with complicated environmental regulations can be difficult, especially for someone who is unfamiliar with federal or state requirements. Often, small businesses do not have the financial means to have an environmental specialist available to interpret these laws. The Environmental Compliance Assistance Program (ECAP) realizes that small businesses sometimes need assistance, and it has the tools and services necessary to provide that assistance to businesses and specific industries across Kentucky. There is no charge for ECAP's services. The driver for the program is the desire to help small businesses in the Commonwealth comply with their environmental obligations and be successful.

Environmental Compliance Assistance Program



Environmental Assistance Workshop Participants

ECAP provides opportunities for learning how to stay up to date on regulations and requirements.

ASSISTANCE

ECAP helps regulated entities from assisting with simple phone calls concerning environmental regulations to in-depth assistance requests. The program is comprised of technical assistance specialists who, on a daily basis, provide assistance on a broad range of environmental topics to the public, regulated entities, and state agencies.

During FY18, ECAP provided responded to 1,085 requests. The majority of these assistance requests, 430 responses, were related to air quality. One of ECAP's primary responsibilities is to provide assistance to small businesses. Of the requests received in FY18, 172 responses were to small businesses of 100 employees or less.



Environmental Assistance Branch Staff

Manager

Kari Johnson

Environmental Scientists

Derek Bozzell
Jayme Csonka
Chelsea Durbin



DID YOU KNOW?

According to the U.S. Small Business Administration, complying with environmental regulations can cost small businesses over 3.5 times the amount it costs large businesses. The Environmental Compliance Assistance Program specializes in helping small businesses get into compliance, saving them time and money.

SOURCE: U.S. ENVIRONMENTAL PROTECTION AGENCY
[HTTPS://WWW.EPA.GOV/SITES/PRODUCTION/FILES/2015-11/DOCUMENTS/507_REPORT.PDF](https://www.epa.gov/sites/production/files/2015-11/documents/507_report.pdf)

ASSISTANCE (CONT.)

Despite major personnel changes, the program averaged approximately 97 assistance requests per month and continued to fulfill a vital service for the public and regulated entities across the state.

REGULATIONS

ECAP helps entities understand and comply with environmental regulations in a variety of multimedia areas. The program focuses on assisting these entities in understanding Kentucky's and the U.S. Environmental Protection Agency's regulations and requirements.

Throughout the year, ECAP provides a number of compliance education related services to assist in creating a better understanding of regulatory requirements. A large part of this assistance focuses on air quality related topics as part of the Clean Air Act's Title V requirement to assist small businesses.

INCENTIVES

One of the many incentives of the program is the ability to work with facilities and help troubleshoot problems.

Some of the types of assistance provided include: free compliance site visits, small business air quality permit application assistance, and development of tools and resources to enhance facility operations.

Another positive aspect of the program is the ability to use enforcement discretion and work proactively with clients to identify and correct compliance issues. Often times, there can be a hesitancy by the regulated community to come forward with knowledge of environmental compliance issues. This hesitancy is brought on by the fear of civil enforcement action. However, ECAP's enforcement discretion policy allows clients to utilize the self-audit privilege to self-disclose environmental violations. The correction of these issues may assist the facility in avoiding violations and costly penalties.



Environmental Compliance Assistance Program Staff

(Left) Manager, Kari Johnson, (Middle) Environmental Scientist, Derek Bozzell, and (Above) Environmental Scientist, Jayme Csonka help assist participants during the 2018 ACC-SAMR workshop.

OUTREACH

Throughout the year, ECAP strives to develop relationships and provide opportunities and resources to address the needs of the regulated community. Outreach to the public occurs in the form of educational opportunities, development of compliance tools, compliance site visits, and attending conferences.

During FY18 ECAP has been involved in numerous activities to provide the public and regulated community with updates on changes in regulations or to further explain compliance requirements. When regulations are developed or changed, questions may arise from industries who might be confused by current or upcoming environmental issues. The potential for compliance issues is greater when there is not a clear understanding of a compliance requirement.

The key to helping them stay in compliance is through outreach. Beginning in 1994, through a partnership with the University of Kentucky, ECAP became members of the Small Business Environmental Assistance Program (SBEAP), which was established to assist small businesses with environmental compliance and emissions reduction. This program provides a valuable resource to the regulated community by providing free air quality permit services and assistance.

In FY18 ECAP staff conducted 10 compliance site visits for regulated entities; like the multimedia compliance site visit with Oscarware conducted in July 2017. DCA staff were able to work with the facility to develop an air quality permit application for their grill topper manufacturing business.

TOOL DEVELOPMENT

The goal of ECAP is to ensure awareness and understanding of environmental requirements, including permitting requirements. Environmental permits may be required by federal, state and sometimes local governments to minimize impacts on human health and the environment. The specific regulations and permits that could apply to a facility may vary depending on location, types of activities and the facility's potential to emit air pollutants. To help facilities better understand their compliance requirements, ECAP regularly develops and publishes fact sheets and guidance documents.

During FY18, ECAP began a series of fact sheets to assist medical facilities with environmental requirements. The first in a series of documents created were the Chemotherapy Waste Disposal fact sheet and the Dental Amalgam fact sheet. These documents cover how facilities can appropriately handle two different medical wastes.

The Chemotherapy Waste Disposal fact sheet covers the different types of waste associated with chemotherapy, how facilities can identify whether or not they are generating hazardous wastes, and recommended disposal options. The Dental Amalgam fact sheet notifies facilities of new EPA standards relating to handling mercury. It also explains what types of offices are subject to the new rules, what types of offices are affected and compliance deadlines.

ECAP also developed the Holiday Tree Disposal fact sheet, which explains how citizens can properly dispose or recycle their Christmas tree after the holidays.

TOOL DEVELOPMENT (CONT.)

ECAP updates documents throughout the fiscal year to ensure that industries have access to the most up-to-date information possible. The Household Sharps Disposal Factsheet was updated in April of 2018 to include additional information for needle collection and disposal programs.

TRAINING EVENTS

INTRODUCTORY ENVIRONMENTAL ASSISTANCE SERIES

In FY18 ECAP partnered with the other divisions in the Energy and Environment Cabinet to develop a series of introductory workshops designed to educate attendees on environmental regulations, common permits and responsibilities and the inspection process. These workshops were divided into three days, each focusing on a different environmental media: air quality, water quality and waste management. One of the goals of this workshop series is to bring the services of the DCA to new areas in the Commonwealth.

During the spring of 2018, the workshops were held in Prestonsburg, KY. In summer 2018, the workshops moved to Frankfort, KY. The series will continue in the fall of 2018 in Owensboro, KY. During fiscal year 2018, these workshops reached over 80 facilities.



One on One Assistance

(Above) Division of Air Quality Field Inspector, David Wolfe, and DCA Environmental Scientist, Chelsea Durbin, help out with permit questions at the ACC/SAMR Open House.

ACC/SAMR OPEN HOUSE

Throughout the course of a year, entities with air permits are required to submit Annual Compliance Certifications (ACC) and Semi-Annual Monitoring reports (SAMR). In an effort to help those who were unfamiliar with the process, ECAP specialists teamed up with the Division for Air Quality Field Operations Branch to host the ninth annual ACC-SAMR workshop and open house. Over 25 facilities made their way to Frankfort to attend the workshop and receive one-on-one assistance for these reports during the afternoon open house.



ACC/SAMR Open House

(Above) Air Quality Frankfort Regional Office Supervisor, Natasha Parker, listens to a participant's air permit questions.



environmental compliance assistance program



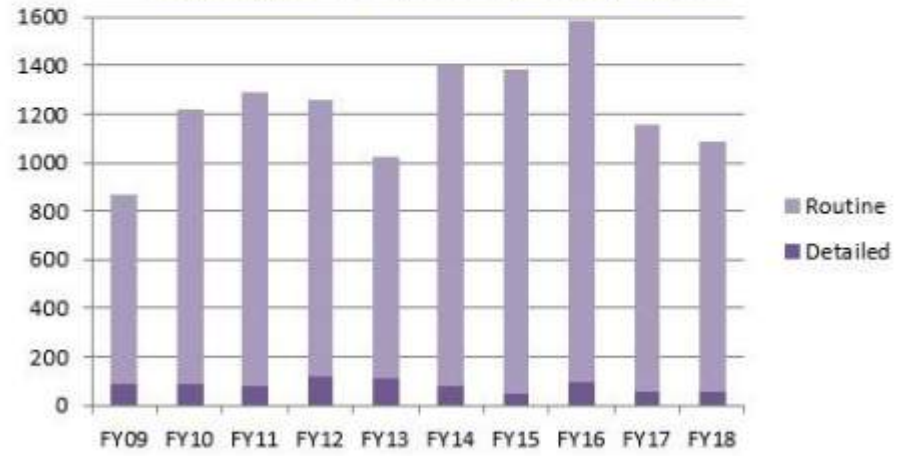
6

ATTENDEES TRAINED

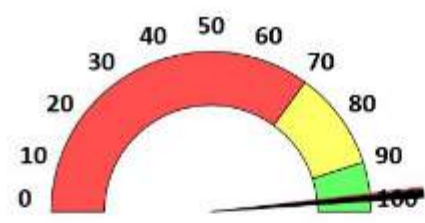


198

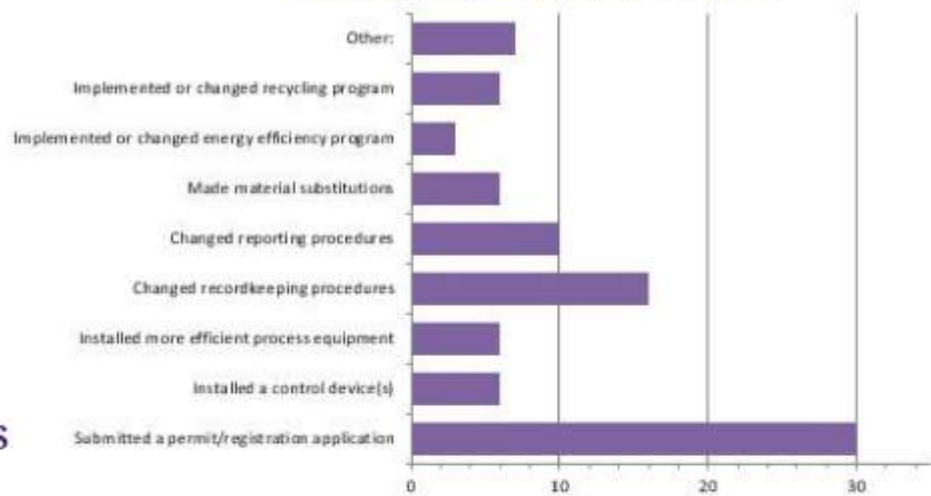
DETAILED VS ROUTINE REQUESTS



ATTENDEE SATISFACTION



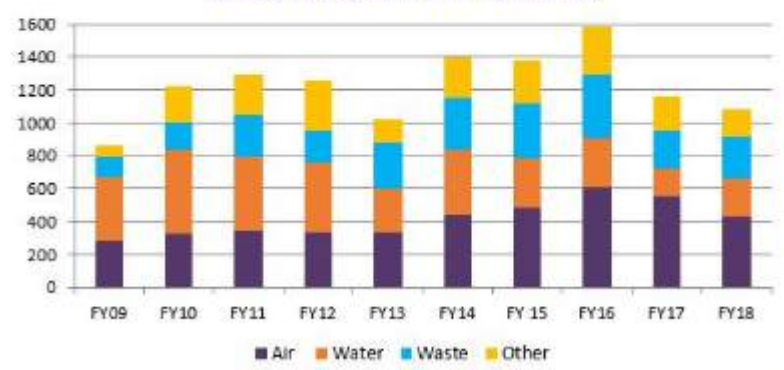
CLIENT BEHAVIOR CHANGES



TYPE OF ASSISTANCE REQUESTS



ASSISTANCE BY MEDIA





LIVING GREENER GROWING STRONGER

DCA has created programs that go beyond operator certification and environmental compliance assistance. KY EXCEL is Kentucky's voluntary environmental leadership program, which recognizes those who do more than is required to protect and conserve the Commonwealth's land, air and water resources. The Kentucky Brownfield Redevelopment Program has helped to educate the public about cleaning up contaminated properties and putting them back to reuse. Sites that were eyesores have been given new life, providing jobs, tax revenues and conserving greenfields. These programs offer free services to the public and private sectors while promoting sustainable living and working.

Kentucky Environmental Leadership Program



Sekisui S-LEC America Woodlands Day

KY EXCEL Program Coordinator, Robyn Whitted, participates in activities with Sekisui's employees.

KY EXCEL

KY EXCEL is the Kentucky Department for Environmental Protection's (DEP) free environmental leadership program, whose members complete voluntary projects to improve the environment. In 2005, groundwork for KY EXCEL was laid by cabinet staff meeting with citizens and companies and reviewing other state environmental leadership programs.

With the foundation set, KY EXCEL launched on Jan. 17, 2006 with four different membership levels. The KY EXCEL membership levels are divided between regulated and non-regulated members. Regulated members are entities who have an air, water or waste permit from the DEP. Non-regulated members are entities and individuals not regulated by DEP, but looking to help their community.



Environmental Assistance Branch Staff

Manager
Kari Johnson

Program Coordinator
Robyn Whitted



DID YOU KNOW?

An acre of trees absorbs enough CO₂ over one year to equal the amount produced by driving a car 26000 miles. Planting trees remains one of the cheapest, most effective means of drawing excess CO₂ from the atmosphere. One large tree strategically placed in a yard can replace 10 room-size air conditioners operating 20 hours per day. Little actions have a way of growing into something bigger.

SOURCE:
WWW.ARBORENMENTALALLIANCE.COM

KY EXCEL (CONT.)

KY EXCEL provides a programmatic framework for companies, groups and individuals with the shared goal of taking on projects that help the environment and the people of the Commonwealth. The program was created with a tiered system to allow a variety of entities to participate. Members which are regulated by DEP include the Master, Leader and Partner levels. The Master level is open to DEP regulated members who have a sustained history of environmental compliance and perform 5 projects a year. The Leader, 3 projects a year, and Partner, 1 project a year, levels are available to DEP regulated entities who might have some environmental compliance concerns, but who have a desire to protect the environment while working to improve their compliance.

The Advocate level was developed for those not regulated by DEP but wish to take action. Advocate level members can be anyone. Current advocate members include citizens, households, communities, local governments, non-DEP regulated businesses, schools and nonprofit groups.

In 2016, KY EXCEL's fifth membership level was developed, KY EXCEL Farm. The Farm level is open to all individuals and entities that own at least five acres of land and farm crops or livestock.

A unique part of the KY EXCEL program is all members conduct voluntary projects. Each project is designed to benefit Kentucky's environment in some manner. These projects can be tailored to fit the members work or lifestyle.



KY EXCEL Member Projects

(Top) Sekisui S-Lec America Employees install native landscaping on woodlands day. (Middle) Leggett & Platt employees, Debbie Means and Russell Allen, show off their Eco Initiative display board, (Bottom) Four Roses' employees spent a day cleaning up the Salt River.

EDUCATION AND OUTREACH

In FY18, KY EXCEL staff offered educational opportunities and outreach services at a variety of events held by members and other partner organizations. KY EXCEL staff participated in events held by the Kentucky Pollution Prevention Center, Four Roses Distillery, Kentucky American Water, Sekisui S-Lec, America, LLC, Kentucky NEED, Kentucky Environmental Education Council and Kentucky State University's Third Thursday Thing.

As part of a pollution prevention grant, KY EXCEL partnered with the Kentucky Pollution Prevention Center to coordinate two workshops: Wonders of Steam and Peak Demand. In addition, KY EXCEL coordinated a Leading the Way Workshop and an educational field trip to Makers Mark Distillery.

Over the past year, KY EXCEL staff provided one-on-one pollution prevention assistance by completing more than 10 site visits. Through such endeavors, program staff worked with more than 2,000 individuals and had more than 300 people attend events coordinated by KY EXCEL.



EEC Earth Day

Program Coordinator, Robyn Whitted, talks to an attendee.



KY EXCEL Open House

Roberta Burnes, KY Division of Air Quality Education Specialist, shares with a KY EXCEL Member.

KY EXCEL OPEN HOUSE

Partnerships, resources and sharing were main topics as DCA hosted the first-ever KY EXCEL Open House, on June 21, in Frankfort, KY. The event welcomed anyone interested in environmental leadership and innovation in the Commonwealth. More than 100 people attended the day-long event. At the open house, attendees viewed informational displays highlighting KY EXCEL members' current projects to foster discussions about how to get involved. Attendees also heard seventeen KY EXCEL members speak on projects and innovative methods for conducting environmental education and outreach.

ENCOURAGING ENVIRONMENTAL LEADERSHIP

KY EXCELEBRATION

Hosted by Kentucky American Water, a KY EXCEL Master since 2013, the 2018 members meeting (now known as the KY EXCELebration) celebrated members' accomplishments during the 2017 calendar year. For the first time, the program presented its Beacon Awards, for exemplary projects conducted during the previous year. There were eight awards given during the inaugural ceremony. More than 50 members joined on the morning of February 22, 2018 to network with and support their fellow KY EXCEL members.



2018 KY EXCELebration Members pose at the annual meeting hosted by Kentucky American Water.

2018 Beacon Award Winners

Project Category	Project Title	KY EXCEL Member	Membership Type
Conservation	Jim Beam Bees & Prairie Project	Beam Suntory – Jim Beam Clermont and Booker Noe Distilleries	Master
Education	Recycle Challenge	LFCUG	Leader
Performance Improvement	Reduction of VOC Emissions	National Office Furniture – Danville Location	Partner
Public Health	Main Street Clean Sweep	Bluegrass Greensource	Advocate
Restoration	River Sweep – Carrollton	North American Stainless	Master
Resource Efficiency	Reduction in City Water Consumption	Catlettsburg Refining, LLC	Master
Resource Support	Rain Barrel Workshops	Kentucky American Water	Master
Waste Reduction	Food Recovery	GleanKY	Advocate



KY EXCEL FY18 MEMBER PROJECT EXCELLENCE



2017-18 MEMBER ACCOMPLISHMENTS



415 Projects Completed
4,518 People Trained
6,741 Program Participants



10,748
Trees Planted



\$8,338,686.59
Dollars
SAVED

7,594,272
Gallons
Water Usage Reduced



3,463,645
Pounds
Waste Reduced



186 Events
River Sweep &
Litter Pick-ups



9,984,496
Pounds
Metal Recycled



19,642,932 kWh
Electricity Reduced



(Above) Debbie Means holds the Master Certificate with members of the employee "Green Team."

2018 KY EXCEL Master Presentations:

**LEGGETT & PLATT WINCHESTER SPRING
AND SEKISUI S-LEC AMERICA**



(Above) Sekisui President, Pedro Cordoba, receives the Master Certificate from former DCA Director, Paulette Akers.

SUSTAINABLE SPIRITS SUMMIT 2017



Sustainable Spirits Summit

(Left) KDA's Ali Edelstein and DCA's Robyn Whitted ask the crowd questions. (Top Right) Participants take notes. (Bottom Right) The summit was followed by a tour of Copper & Kings.

KY EXCEL staff, in collaboration with the Kentucky Distillers' Association (KDA), coordinated the seventh annual Sustainable Spirits Summit (S3). The 2017 Summit was hosted by Copper & Kings Distillers, in Louisville, on October 3, 2017. Over fifty participants listened to presentations covering a range of topics including white oak sustainability, spent grains, best forestry practices and the KY EXCEL program. They also received ideas on marketing and communicating their unique environmental story.





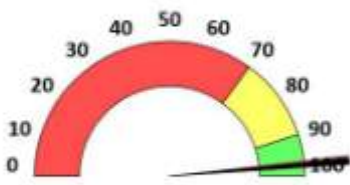
kentucky's environmental leadership program, KY EXCEL

ATTENDEES TRAINED



126

ATTENDEE SATISFACTION



97%

TRAINING EVENTS



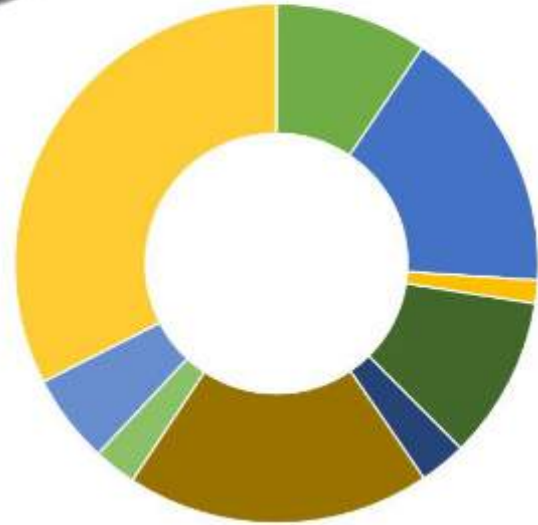
5

KY EXCEL AT A GLANCE



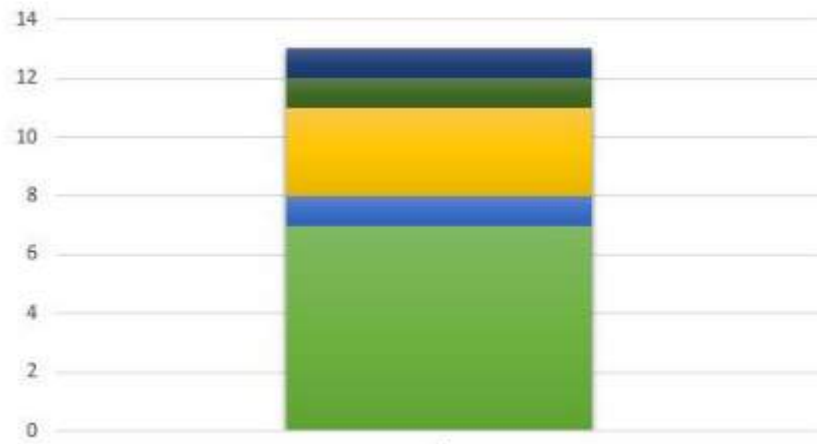
6,741 PROGRAM PARTICIPANTS

PROJECTS BY CATEGORY



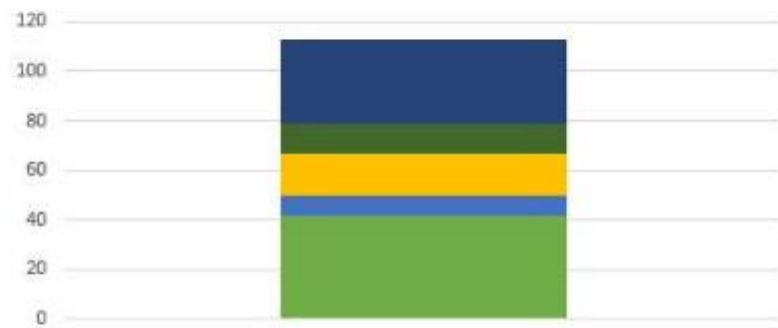
- Conservation
- Education
- Mentoring and Technical Assistance
- Performance Improvement
- Public Health
- Resource Efficiency
- Resource Support
- Restoration
- Waste Reduction

NEW MEMBERS FY18



- Advocate
- Farm
- Partner
- Leader
- Master

KY EXCEL MEMBER CATEGORIES



- Advocate
- Farm
- Partner
- Leader
- Master

Kentucky Brownfield Redevelopment Program



Environmental Assistance Branch Staff

Manager
Kari Johnson

Program Coordinators
Herb Petitjean
Elizabeth McNulty



Brownfield Properties
Sites identified in the Brownfield program have real or perceived contamination.

BROWNFIELDS IN KENTUCKY

Brownfield sites are the evidence of our industrial and commercial past. Now vacant and abandoned, they are a testament of what we have achieved and often a stark reminder that economies and communities are always evolving. Along with history, these sites bring with them another type of legacy, potential contamination.

Communities across the Commonwealth live with their superfund and brownfields everyday. Even if you don't live right next door, you likely feel their impacts. They contribute to the economic, social and environmental decline in the places we live, work and play. However, the redevelopment of contaminated properties is a powerful tool that has far-reaching implications for both urban and rural communities. Contaminated property redevelopment sparks job creation and private investment, encourages infrastructure reuse, increases property values and the tax base and facilitates community revitalization.



DID YOU KNOW?

Through fiscal year 2016, on average, \$16.99 was leveraged for each EPA Brownfields dollar and 8.9 jobs leveraged per \$100,000 of EPA brownfields funds expended on assessment, cleanup, and revolving loan fund cooperative agreements.

SOURCE: [HTTPS://WWW.EPA.GOV/BROWNFIELDS/BROWNFIELDS-PROGRAM-ACCOMPLISHMENTS-AND-BENEFITS](https://www.epa.gov/brownfields/brownfields-program-accomplishments-and-benefits)

BROWNFIELDS (CONT.)

The Kentucky Brownfield Redevelopment Program continues to help communities, nonprofits and private entities address these properties and get them back into productive reuse. This past year, the program continued its tradition in assisting with EPA brownfield grants and worked to communicate the importance of the program in uncertain funding times.

PROGRAM HIGHLIGHTS

Education and Outreach

DCA staff partnered with the Federal Reserve Bank of Cleveland, Cincinnati Branch to hold a "Brownfield for Bankers" workshop on August 10, 2017 at the Barrel House Distillery building in Lexington, KY. Speakers talked about the economic benefits of brownfields redevelopment and highlighted the Old Pepper Distillery, Fayette County Courthouse and Annville School projects.

September marked the beginning of grant preparation season with the "Intro to Grant Writing and Community Revitalization" workshop held in Frankfort. This workshop is followed by the "Brownfield Grant Review Party" each year helps communities submit strong grant applications to the EPA.



Brownfields for Bankers

Holly Wiedemann, AU Associates, talks about the status of the Fayette County Courthouse project.

Other education events in FY18 included, the "Economic Development Forum" held in Hazard, KY. Speakers presented on information and resources to help participants understand the redevelopment process of downtown historic districts. In the spring, new grantees at the City of Bowling Green along with their consultant, Ensafe, presented "Eyesore to Asset: Redeveloping Distressed Properties" along with representatives from EPA Region 4 and DCA.



Brownfield Site Visits

DCA and Superfund staff meet with community leaders to assess redevelopment possibilities of vacant properties in the area.



ASTSWMO

Amanda LeFevre continues to serve as the Chairperson of the Association of State and Territorial Solid Waste Management Officials (ASTSWMO), Brownfield Focus Group, which is comprised of state brownfield program representatives from all 10 EPA regions. This group works to improve communication between state waste program peers and with federal program partners. This year the focus group finished up a series of fact sheets to help with project and risk communications. The fact sheets included information on community involvement, Phase I and II assessments, risk-based cleanups and demolition of abandoned structures. They also started working on a research tool that will help provide an overview of state programs and how they work to assist with property redevelopment. This project will continue into 2019. The Focus Group held a project update and listening session at the National Brownfield Conference in Pittsburg in December of 2017. They also worked with their superfund counterparts to plan and arrange a Superfund and Brownfield Symposium in Jacksonville, Fl.

Central Appalachian Regional Brownfields Summit

DCA staff worked with West Virginia Brownfields Assistance Centers and the Central Appalachian Brownfield Innovation Network (CABIN) to hold the Second Annual Central Appalachian Regional Brownfields Summit on April 8, 2018 in Pulaski, VA. The Summit was held in the Jackson Hotel, a redeveloped brownfield, and featured sessions on innovative redevelopment in the region.

CABIN helps assist communities to identify and connect with mentors that can help provide guidance and ideas to make redevelopment happen. The event was very successful and there are plans to hold the event again in the Spring of 2019.

Assessments and Grants

Assessments and grant writing services are a pivotal part of the brownfield program. The program provided fourteen Phase I assessments and one Phase II assessment during FY18. These assessments help clear the way for property acquisition and cleanup grant applications.

Lake Cumberland Area Development District received \$200,000 in hazardous funding and \$100,000 in petroleum funding as part of an EPA federal brownfield program assessment grant award.

Cleaner Commonwealth Fund

Kentucky's Cleaner Commonwealth Fund, which was established through a US EPA Brownfield Revolving Loan Fund grant of \$850,000, awarded its first loan over the past fiscal year. The Louisville Waterfront Botanical Garden Project, spearheaded by Botanica, Inc., received a \$390,000 loan for site remediation and management during the redevelopment of the site. Due to the program success, EPA awarded an additional \$250,000 to the program to help more sites across the state. Guidelines to apply for the additional funding will go out in the fall of 2018.



Phase I Assessments

These initial assessments are pivotal to the Brownfield Program. Above, Jim Kirby, sorts through historical records to complete research on a site in Western Kentucky.

Kentucky Brownfield Redevelopment Program



ATTENDEES TRAINED

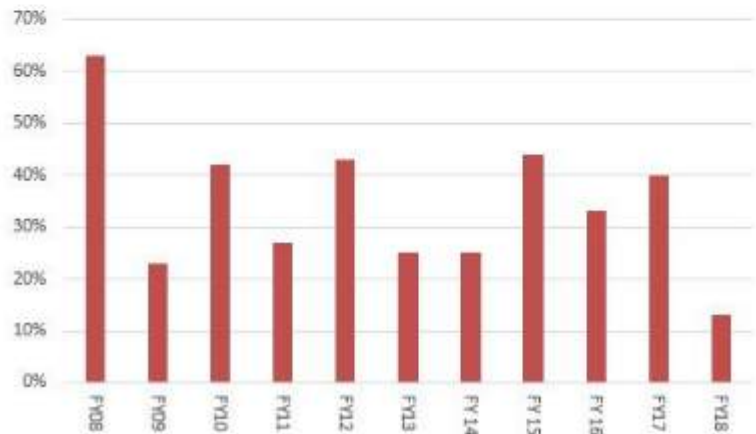


141

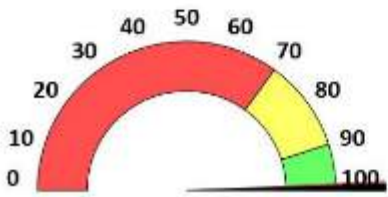
\$13,100,000.00

TOTAL PROGRAM GRANTS

GRANT SUCCESS RATES

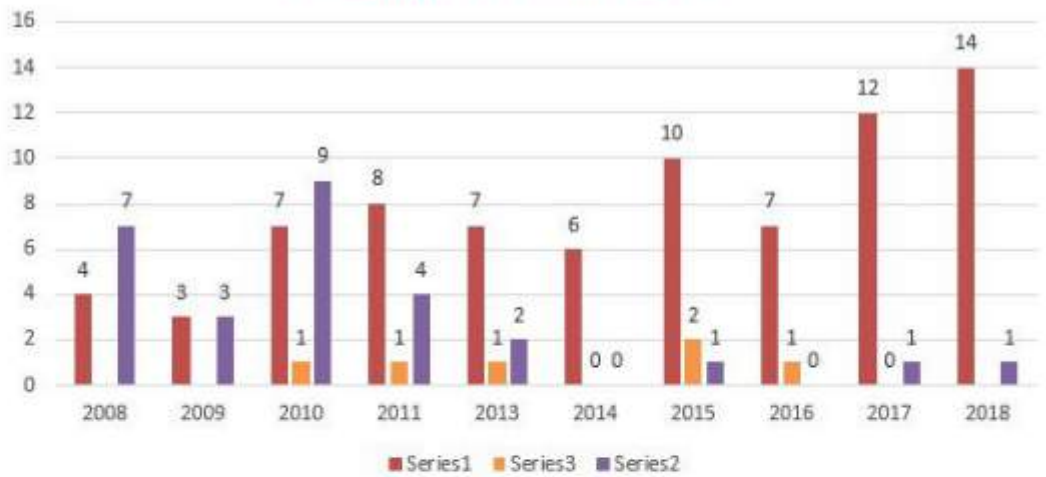


ATTENDEE SATISFACTION



100%

ASSESSMENTS COMPLETED

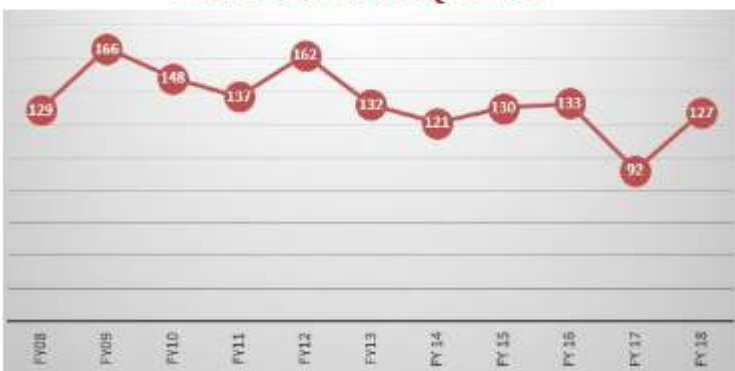


TRAINING EVENTS



6

HELP DESK REQUESTS



FUNDING BY YEAR

