

AG. WATER QUALITY ACT



Photo courtesy of USDA ARS



Photo courtesy of Creative Commons

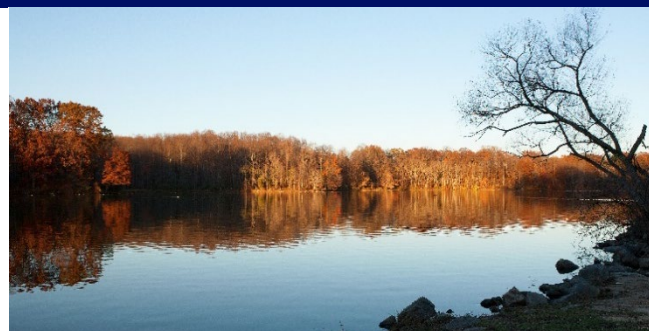


Photo courtesy of USDA ARS

TECHNICAL ASSISTANCE

FUNDING ASSISTANCE

IMPORTANT CONSIDERATIONS

SEDIMENT/SOLIDS SEPARATION BASINS

LIVESTOCK BMP #9

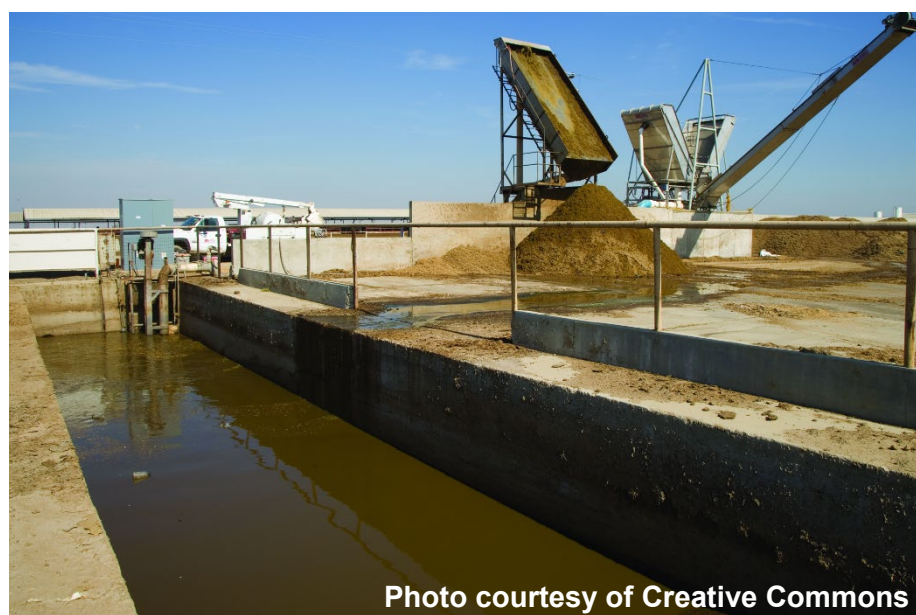


Photo courtesy of Creative Commons

Description:

A structure that temporarily restrains runoff and permits liquids to drain gradually to a holding pond, lagoon, or infiltration area. Solids remain in the basin for drying and later removal for field application.

AWQA Minimum Requirements:

Construct a sediment or solids separation basin, generally a shallow basin designed for low velocities and the accumulation of settled materials between the manure source and manure storage or treatment facilities. An infiltration area may be utilized to further treat effluent.

Recommendations:

Maintain fence around the pipe. Design and size basin appropriately for expected sediment/solids load. Plan for routine maintenance and removal of settled sediment/solids.

Technical References

University Publications

- [AGR-165 Agronomics of Manure Use for Crop Production](#)
- [AEN-91 Managing Liquid Dairy Manure](#)
- [ID-148 Sampling Animal Manure](#)
- [IP-57 Potential for Livestock and Poultry Manure to Provide the Nutrients Removed by Crops and Forages in Kentucky](#)
- [AGR-146 Using Animal Manure as Nutrient Sources](#)

USDA/NRCS Publications

- [USDA/NRCS Field Office Technical Guide](#)

Funding Assistance Options

State Cost Share

- See your local Conservation District to [apply](#).

Kentucky Ag. Development Fund (KADB/KAFC)

- Select from available program options [here](#).

NRCS Environmental Quality Incentives Program (EQIP)

- Select from available program options [here](#).

Important Considerations

Water Quality Benefit (☹-☹☹☹☹): ☹☹☹☹☹
 (KEY: ☹=good, ☹☹☹☹☹=best: see [STEPL Model](#))