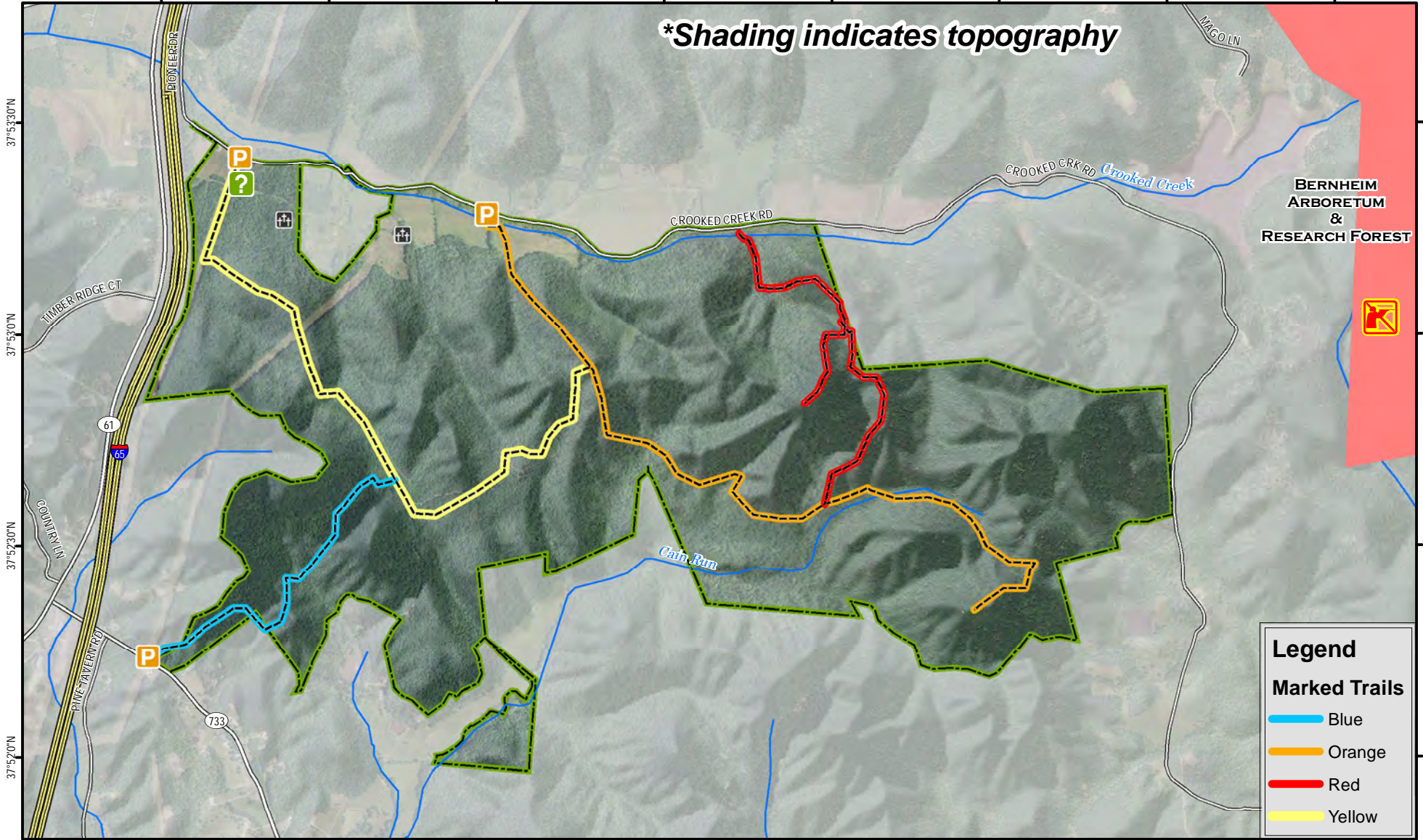


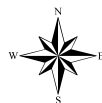
Knobs State Forest and Wildlife Management Area

85°42'0"W 85°41'30"W 85°41'0"W 85°40'30"W 85°40'0"W 85°39'30"W 85°39'0"W 85°38'30"W



A map legend and additional information are provided on PDF pages that accompany this map.

Publication Date: 11/16/2016
Imagery from Farm Service Agency 2016



0 0.25 0.5 0.75 1 Mile

Scale 1:24,000

Note to Map Users

Map prepared by Kentucky Department of Fish & Wildlife Resources (KDFWR). Although KDFWR strives for accuracy, data used to create this map are from a variety of sources and dates; as such, KDFWR makes no representations regarding the accuracy or fitness for use of the information furnished herein.



Knobs State Forest and WMA Information

Public Hunting Area Location



Regional Locator



WMA Overview

Location & Size: Bullitt County, 1,537 acres.

Contact: (502) 477-9024

Elevation: minimum 467 feet, maximum 941 feet.

Entrance GPS coordinates: Latitude N 37.89027, Longitude W -85.6961

Area Habitat: mostly forest: open land 3%, forest 96%, wetland 1%, open water 0%.

Directions & Description: Located 28 miles south of Louisville near Bernheim Arboretum and Research Forest and the Camp Crooked Creek Boy Scout Camp. It is east of I-65 and south of Clermont, and may be accessed from the west via Pioneer Drive and Crooked Creek RD east of KY 61 and via KY 733 from the south. Boundaries are marked with State Forest and WMA markers as well as red blazing on trees.

There are currently 3 small parking areas, two of which are on the right (south) side of Crooked Creek RD; the first is near the entrance and the second is further down across the creek (there may be running water present, use caution if attempting to cross). The third parking area is at KY 733. An information kiosk (board) is at the first parking area. There is a turnaround at the end of Crooked Creek RD.

The best hunting opportunities are deer, turkey, and squirrel due to the extensive (about 1500 acres) oak-hickory woodland. There are some fields on the area (about 45 acres) along Crooked Creek RD so rabbit or quail hunting may be fruitful. The area is open under statewide regulations for all hunting and trapping seasons, except firearms may not be used to take deer. Trapping is by permit only (call 502-477-9024 to apply).

Do not park in the road or on roadsides; **park in one of the three designated areas only.**

There are no ponds or lakes on the Knobs State Forest & WMA so fishing opportunities are restricted to Crooked Creek, which is intermittent (it dries up periodically). Thus fishing is not recommended.

Owned by Kentucky Division of Forestry and Kentucky Department of Fish and Wildlife portions purchased with funds from the Heritage Lands Conservation Fund.

Online Resources


Public Hunting Area users must abide by the Kentucky hunting, trapping, and fishing regulations. It is incumbent on persons using Public Hunting Areas to become familiar with these regulations. Kentucky Department of Fish & Wildlife Resources provides these regulations on our Web site at fw.ky.gov or by calling 1-800-858-1549.

Wildlife Management Area Map Notes & Legend

NOTE TO MAP USERS:

For most WMA maps the landscape is depicted using a combination of elevation contours, hillshading and a green tint indicating woodland areas that is derived from satellite imagery. On WMAs that are relatively small or have a history of surface mining aerial photography is used.

WMA Map Legend

	WMA Office		WMA Boundary		Populated Place
	Information Kiosk		Aerial photograph		Kentucky Boundary
	Check station		Other Public Hunting Areas		Interstate Highway
	Mobility-impaired Hunting Blind		Area Off Limits		Kentucky Parkway
	Trailhead		No Hunting		U.S. Highway
	Horseback Trailhead		Seasonally Restricted Access		State Highway
	Parking Lot		Mobility Impaired Hunting Area		Local Road
	Picnic Area		Primitive Hunting Only		Forest Service Road
	Restrooms		Foot Traffic Only		Active Railroad
	Wildlife Viewing Site		Open Water		Abandoned Railroad
	Interpretive Site		Wetland		Federal Recreation Trail
	Retriever Training Site		Woodland		WMA Road
	Gate				WMA Foot Trail
	Campground				WMA Horse Trail
	Cemetery				Gas Pipeline
	Corps of Engineers Office				Powerline
	Waterfowl Blind				Rivers and Streams
	Shooting Range				Dam
	Established Bank Access				Trout Waters
	Fishing Pier				Elevation Contour
	Carrydown Launch				
	Small Boat Ramp				
	Large Boat Ramp				
	State Park Office				