

Knox County

Blackside Dace Streams

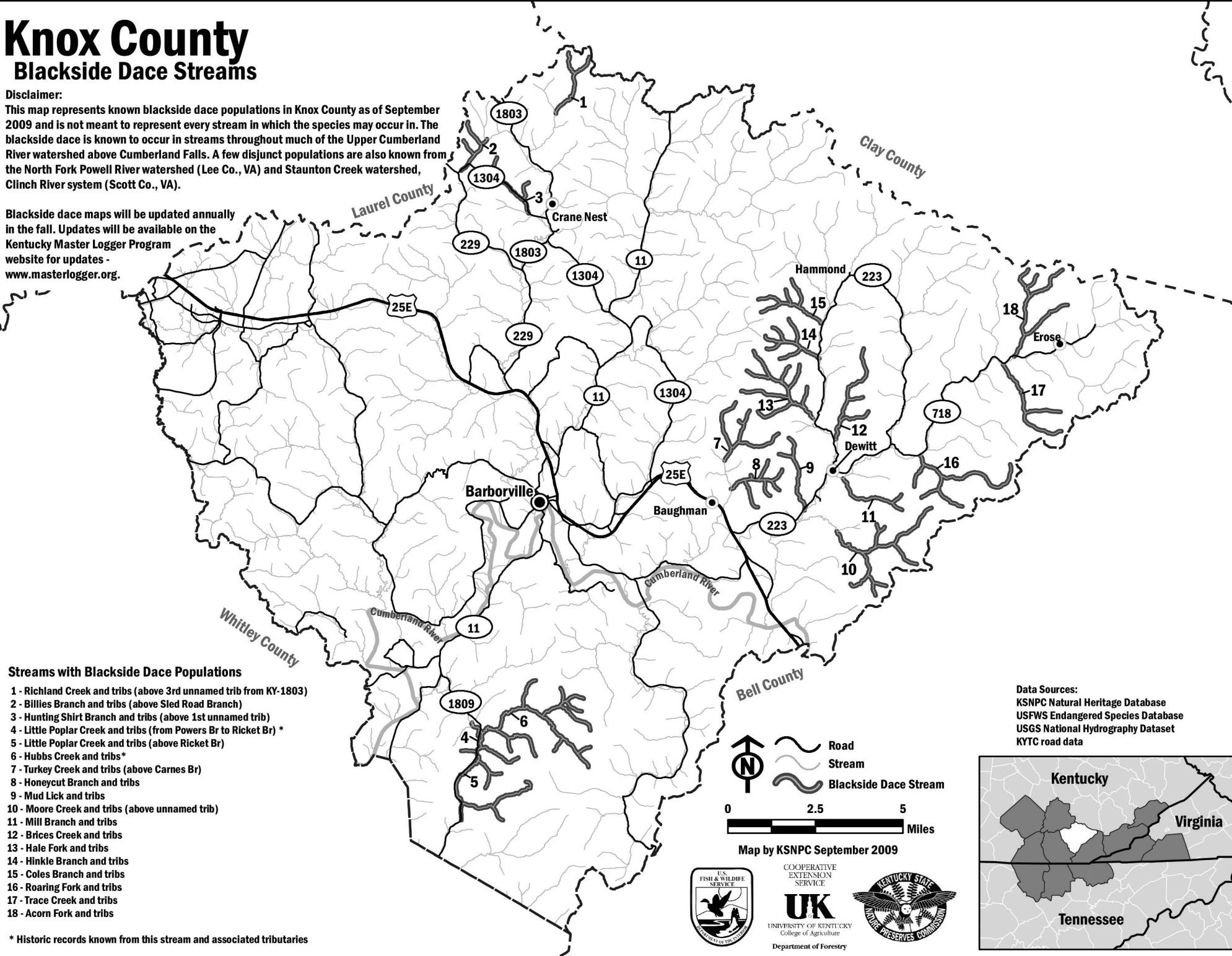
Disclaimer:
 This map represents known blackside dace populations in Knox County as of September 2009 and is not meant to represent every stream in which the species may occur in. The blackside dace is known to occur in streams throughout much of the Upper Cumberland River watershed above Cumberland Falls. A few disjunct populations are also known from the North Fork Powell River watershed (Lee Co., VA) and Staunton Creek watershed, Clinch River system (Scott Co., VA).

Blackside dace maps will be updated annually in the fall. Updates will be available on the Kentucky Master Logger Program website for updates - www.masterlogger.org.

Streams with Blackside Dace Populations

- 1 - Richland Creek and tribs (above 3rd unnamed trib from KY-1803)
- 2 - Billies Branch and tribs (above Sled Road Branch)
- 3 - Hunting Shirt Branch and tribs (above 1st unnamed trib)
- 4 - Little Poplar Creek and tribs (from Powers Br to Ricket Br) *
- 5 - Little Poplar Creek and tribs (above Ricket Br)
- 6 - Hubbs Creek and tribs*
- 7 - Turkey Creek and tribs (above Carnes Br)
- 8 - Honeycut Branch and tribs
- 9 - Mud Lick and tribs
- 10 - Moore Creek and tribs (above unnamed trib)
- 11 - Mill Branch and tribs
- 12 - Brices Creek and tribs
- 13 - Hale Fork and tribs
- 14 - Hinkle Branch and tribs
- 15 - Coles Branch and tribs
- 16 - Roaring Fork and tribs
- 17 - Trace Creek and tribs
- 18 - Acorn Fork and tribs

* Historic records known from this stream and associated tributaries



0 2.5 5 Miles

Map by KSNPC September 2009



Data Sources:
 KSNPC Natural Heritage Database
 USFWS Endangered Species Database
 USGS National Hydrography Dataset
 KYTC road data

