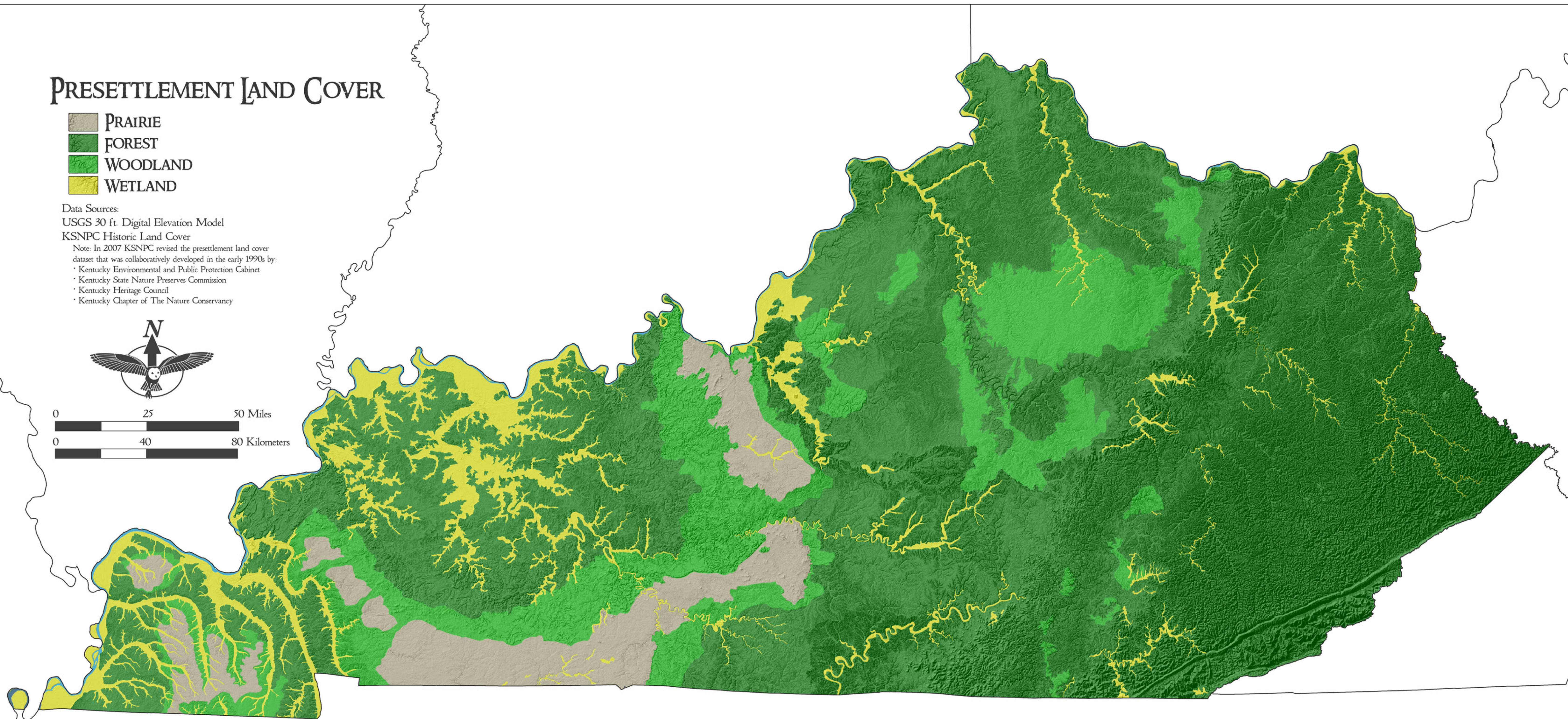
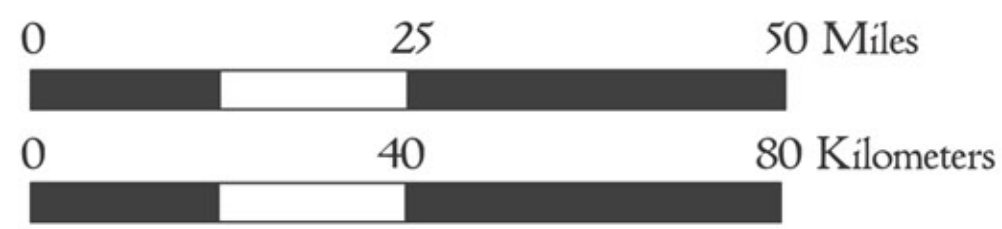


PRESETTLEMENT LAND COVER









-  PRAIRIE
-  FOREST
-  WOODLAND
-  WETLAND

Data Sources:
 USGS 30 ft. Digital Elevation Model
 KSNPC Historic Land Cover
 Note: In 2007 KSNPC revised the presettlement land cover dataset that was collaboratively developed in the early 1990s by:
 * Kentucky Environmental and Public Protection Cabinet
 * Kentucky State Nature Preserves Commission
 * Kentucky Heritage Council
 * Kentucky Chapter of The Nature Conservancy

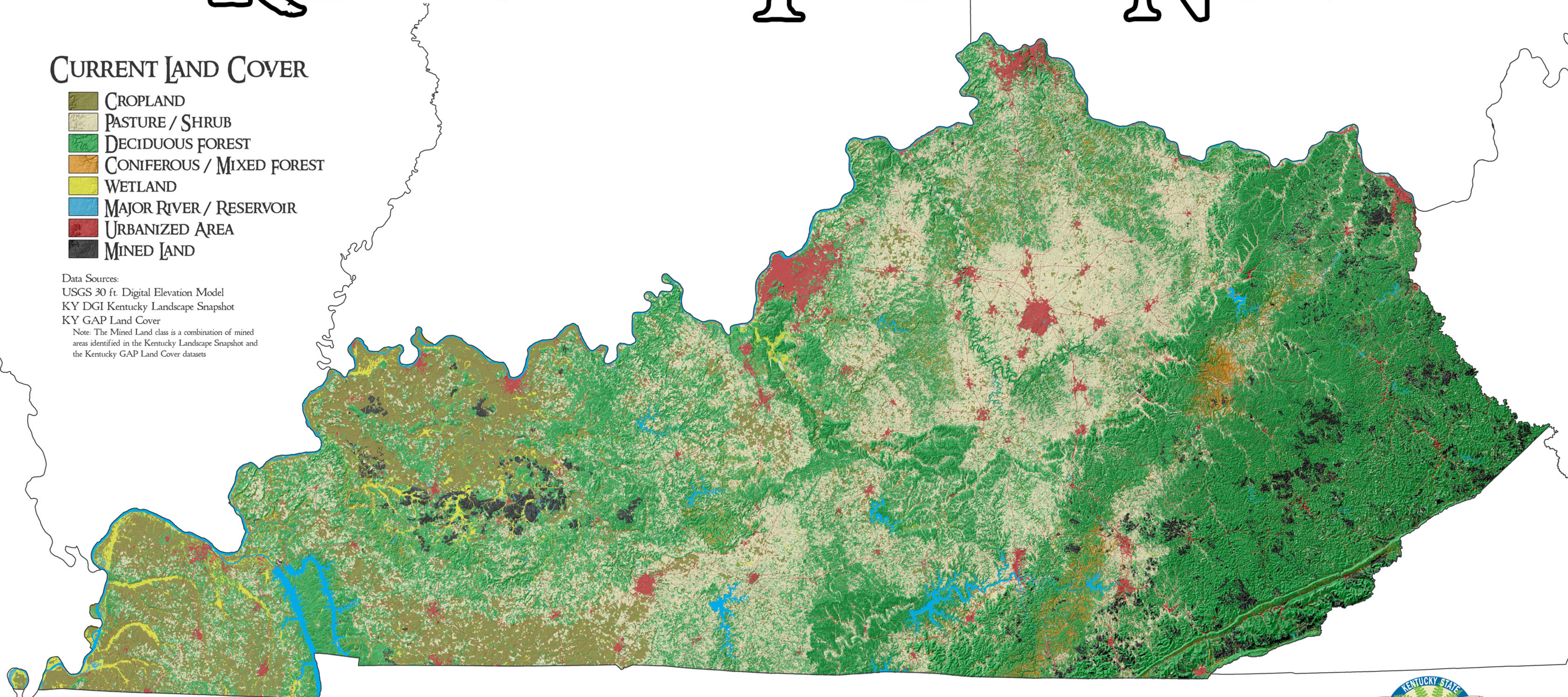


KENTUCKY THEN & NOW

CURRENT LAND COVER

-  CROPLAND
-  PASTURE / SHRUB
-  DECIDUOUS FOREST
-  CONIFEROUS / MIXED FOREST
-  WETLAND
-  MAJOR RIVER / RESERVOIR
-  URBANIZED AREA
-  MINED LAND

Data Sources:
 USGS 30 ft. Digital Elevation Model
 KY DGI Kentucky Landscape Snapshot
 KY GAP Land Cover
 Note: The Mined Land class is a combination of mined areas identified in the Kentucky Landscape Snapshot and the Kentucky GAP Land Cover datasets



Less than 1% of the woodlands, prairies and presettlement forests that covered Kentucky 200 years ago occur here today (KY Natural Heritage Database 2007).
 Kentucky has lost over 80% of its original wetland acreage (Dahl and Johnson 1991).