



Bluegrass Greensource
Engagement and Partnerships

Mission:
Empower the Bluegrass to
create a sustainable
environment

small changes
BIG IMPACT

small changes
BIG IMPACT



Our 20-County Service Area

- | | | |
|------------|---------------|-------------|
| 1 Anderson | 8 Garrard | 15 Nicholas |
| 2 Bourbon | 9 Harrison | 16 Owen |
| 3 Boyle | 10 Jessamine | 17 Powell |
| 4 Clark | 11 Lincoln | 18 Scott |
| 5 Estill | 12 Madison | 19 Shelby |
| 6 Fayette | 13 Mercer | 20 Woodford |
| 7 Franklin | 14 Montgomery | |

2021 COMMUNITY OUTREACH SNAPSHOT

198

Energy Efficiency
Workshop
participants

50

community-made
rain barrels

20

Green Check
certified
businesses

715

Main Street
Clean Sweep
volunteers

8,285
pounds

of trash
collected



24,875

Direct Engagements

1,357

PreK-12 classroom activities

\$49,565

invested in water quality

4%

Fundraising
Expenses

9%

Administrative
Expenses

87%

Program Expenses

such as education, outreach,
trainings, resources, and more!



20,655

total student
engagements

231

teachers provided
with professional
development

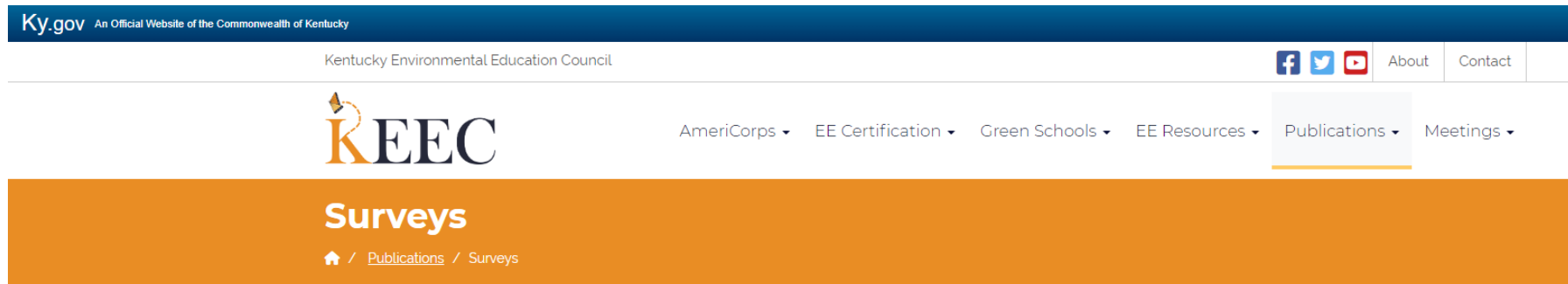
Why do we do this?

“Never doubt that a small group of thoughtful, committed, citizens can change the world. Indeed, it is the only thing that ever has.”

— [Margaret Mead](#)



Why??



The 2019 Survey of Kentuckians' Environmental Knowledge, Attitudes & Behaviors

December 2019

Why?



Only 45% of Kentuckians can answer general environmental knowledge questions correctly



93% say it is possible to protect our environment and our economy



82% believe they personally impact our environment

60% strongly, 27% somewhat



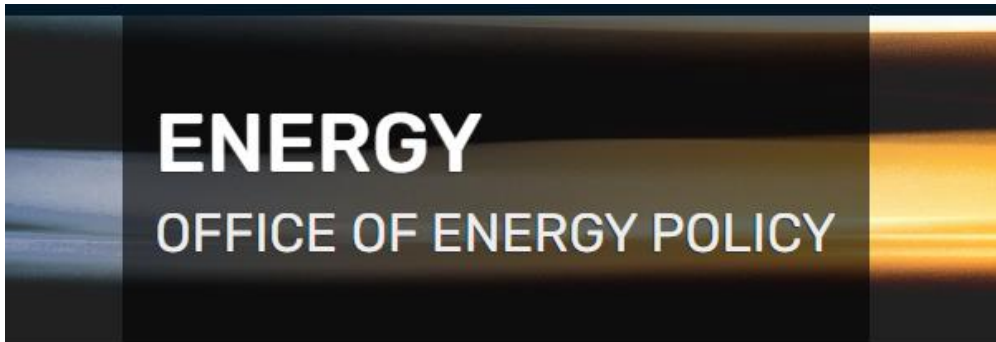
93% think Environmental Education should be taught in schools

How do we do this?

Partnerships!

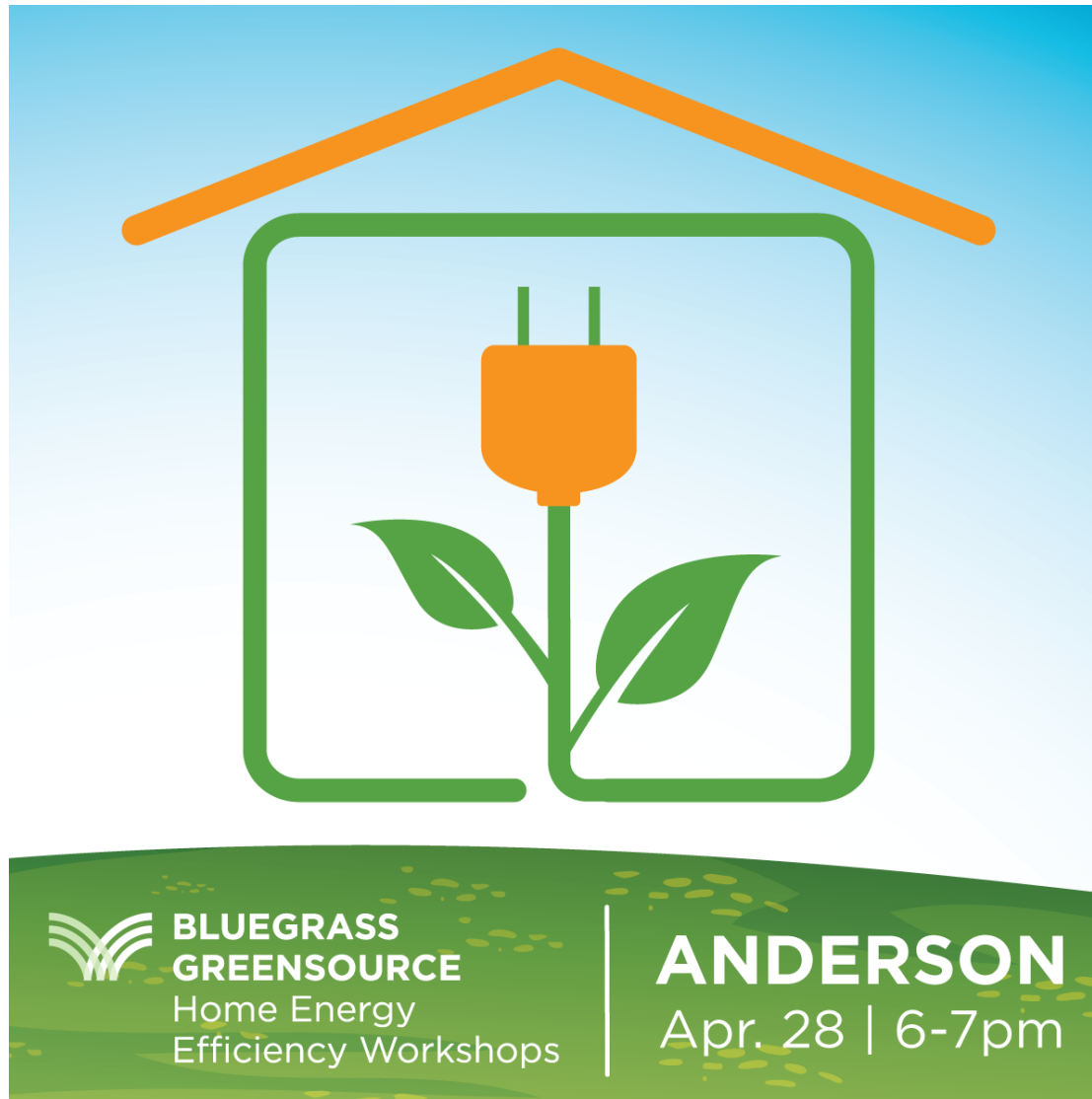


ENERGY AND
ENVIRONMENT CABINET

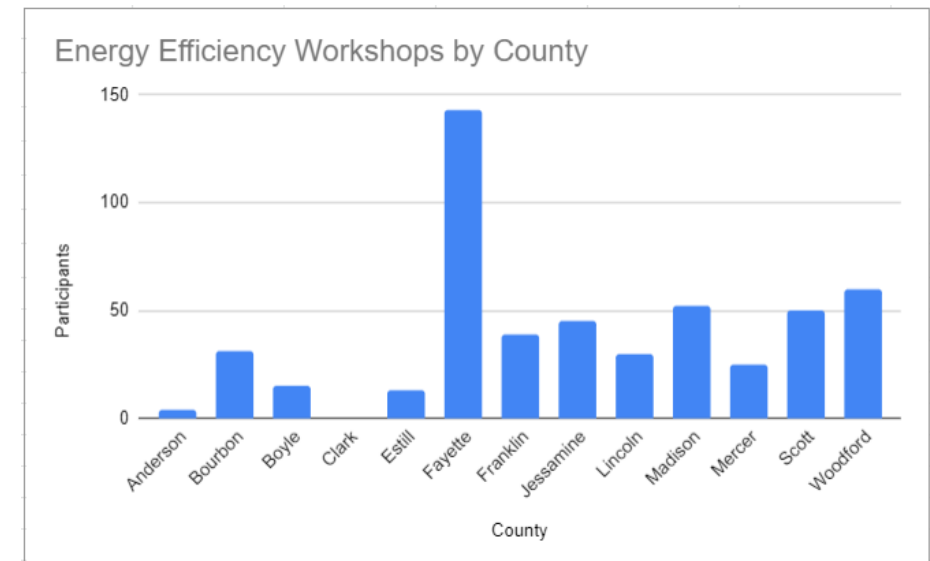


and many, many more...

Energy Efficiency Workshops



- Audience -
low income, underserved, and linguistically isolated communities
- Totals -
30 Workshops
507 participants



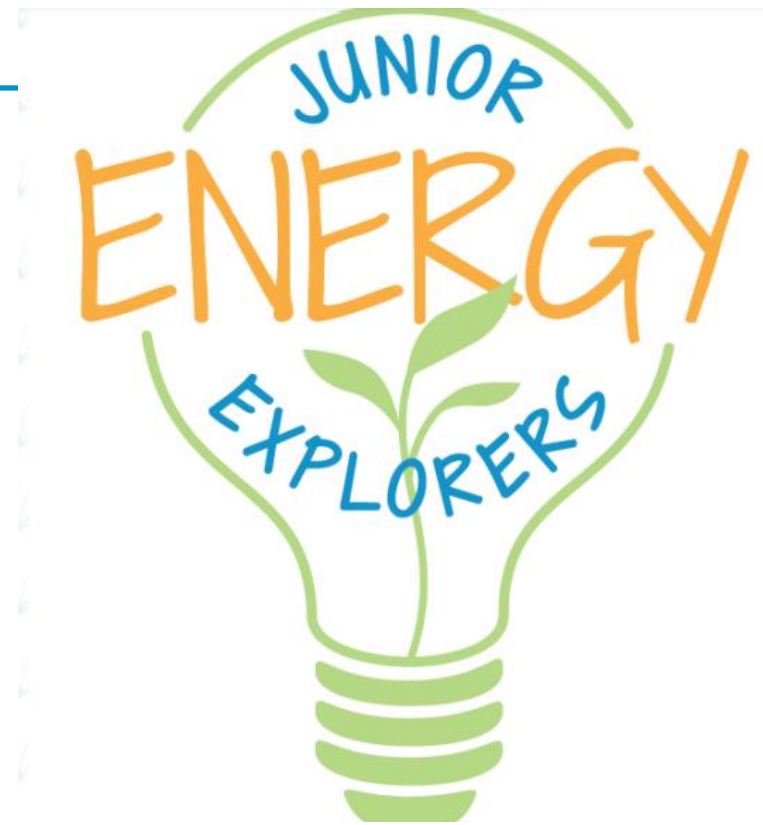
Energy Efficiency Workshops

- Partnerships
 - Mountain Association
 - Libraries
 - County Extension
 - Kentucky Refugee Ministries
 - GlobalLex
 - Churches



Junior Energy Explorer Teacher Workshops

- Junior Energy Explorers Curriculum
- 48 Preschool Teachers



Junior Energy Explorer

Family Education (STEM Labs)

- 7 Family Events
- 102 participants



Blown Away:

Students harness the wind's power to race a cotton ball.

Fun in the Sun:

Students investigate light energy by creating and tracing shadows.

Junior Energy Explorer Classroom Education

- 31 preschool classrooms
- 125 total activities
- 1,206 student engagements



Junior Energy Explorer

Classroom Education

Shady Scavenger Hunt Students investigate solar energy and the impacts of the sun's light and heat by observing and measuring shadows. Students create "sun bracelets" with UV beads and observe the changes that occur when the sun's light touches their bracelets.



Junior Energy Explorer Classroom Education

How Many Ways to Move a Boat Students experiment with wind, water energy, and a variety of tools to see how many ways they can move a toy boat in water without touching it.



Division of Water

- Septic Repairs
- Septic Pumpouts
- Riparian Buffers
- Mini Grants
- Stakeholder Groups

Dix River
WATERSHED STAKEHOLDERS

Hinkston Creek
WATERSHED STAKEHOLDERS



connecting
COMMUNITY AND WATER

Septic Assistance

Repairs

93 systems

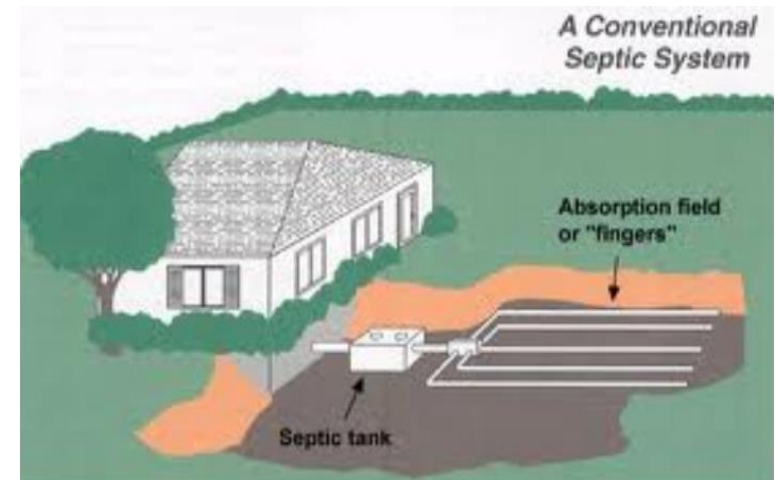
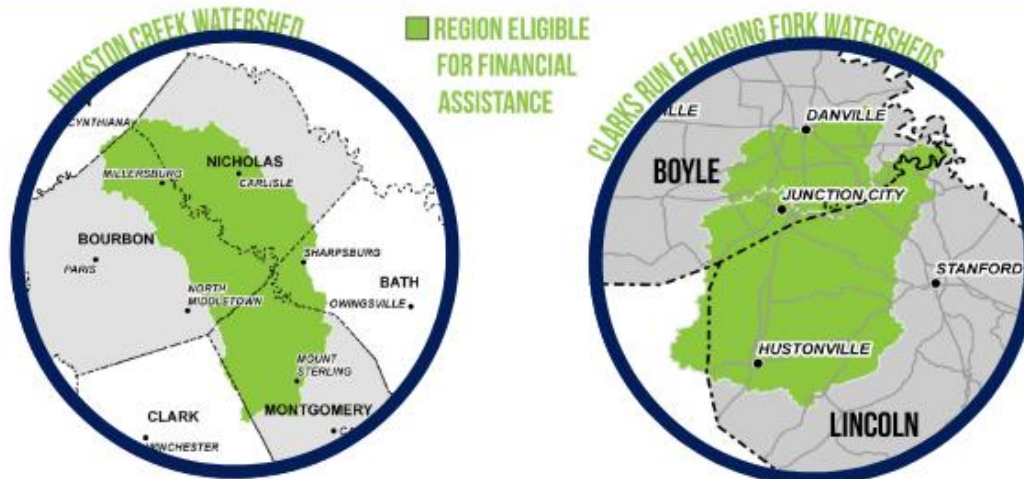
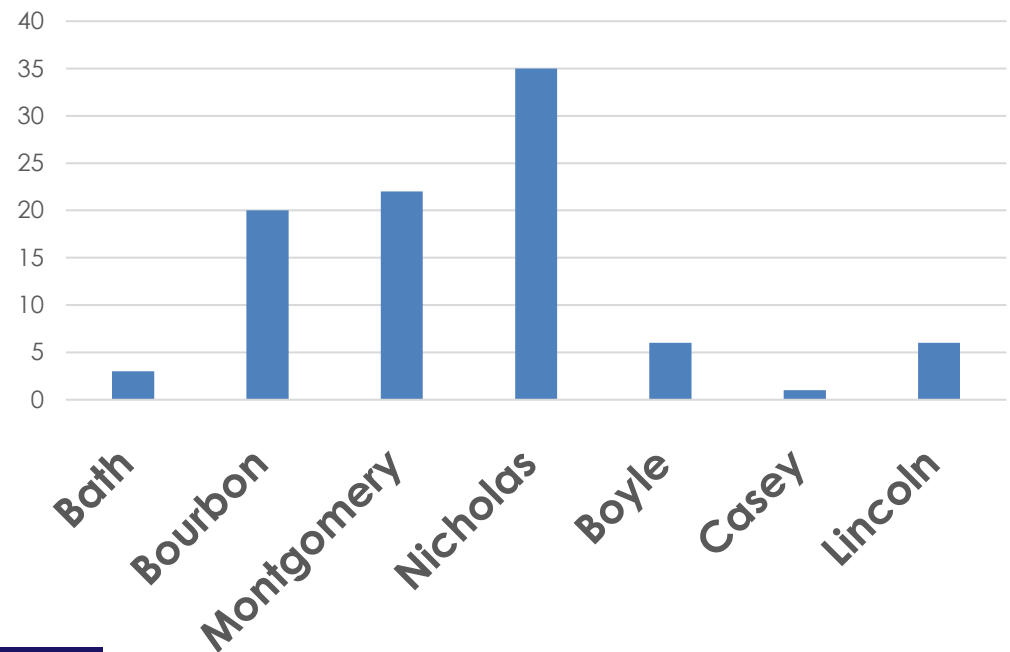
\$526,050

Pump Outs

79 systems

\$35,550

Septic Repairs by County



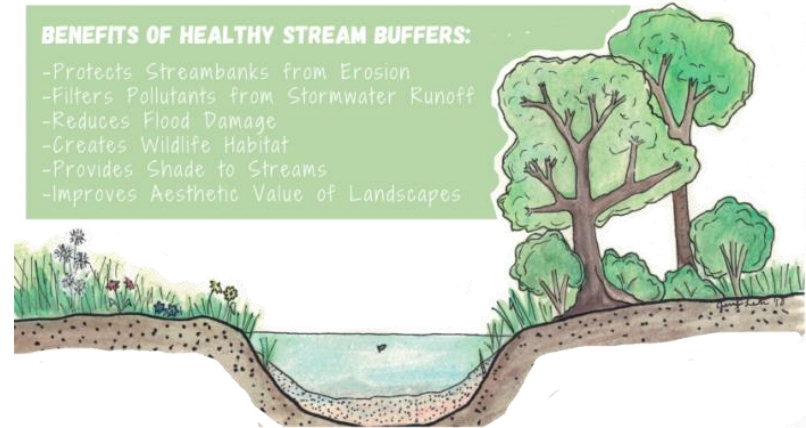
Riparian Buffers

14 Projects

\$28,000

BENEFITS OF HEALTHY STREAM BUFFERS:

- Protects Streambanks from Erosion
- Filters Pollutants from Stormwater Runoff
- Reduces Flood Damage
- Creates Wildlife Habitat
- Provides Shade to Streams
- Improves Aesthetic Value of Landscapes



2019



2020

Riparian Buffers

FARMER TO FARMER FIELD DAY

SATURDAY, NOVEMBER 12 | 11-1PM



FARMER TO FARMER
PROJECT 

Mini Grants/Stakeholder Groups

6 awarded for \$24,000



Plantings along Clarks Run at Michael Smith Park demonstrate how we can use Kentucky native plants adapted to grow in moist soils along streams. The canopy of trees planted closest to the stream provide shade to the waterway. Further from the stream, trees, shrubs, and herbaceous flowering plants are planted that absorb stormwater to reduce flooding and provide additional habitat for many animals.

WHAT ARE RIPARIAN ZONES?

Riparian zones, or buffers, refer to the land bordering a stream, river, or lake. The plants within this buffer serve many critical functions to protect water quality and aquatic life.



Wide riparian zone with ample shade



Riparian zone absent with limited shade

TERRESTRIAL PLANTS PROTECT STREAMS

Habitat for terrestrial organisms

Riparian plants are homes for many animals, such as birds, mammals, amphibians, and reptiles.



Shade and cool water

Overhanging tree branches shade the stream and keep the water cool, which is important for aquatic organisms.

Slow overland water

Tree roots and underbrush slow water before it enters the stream, which prevents flooding and filters out chemicals and excess nutrients.

Stabilize stream banks

Roots hold tight to soil and prevent it from being washed away and clogging waterways.

Food and habitat for aquatic organisms

Leaves and branches provide important sources of food and habitat for many stream fish and aquatic invertebrates.

Diagram modified from Biological and Agricultural Services, University of Maryland Center for Environmental Science

HOW CAN WE PROMOTE RIPARIAN ZONES

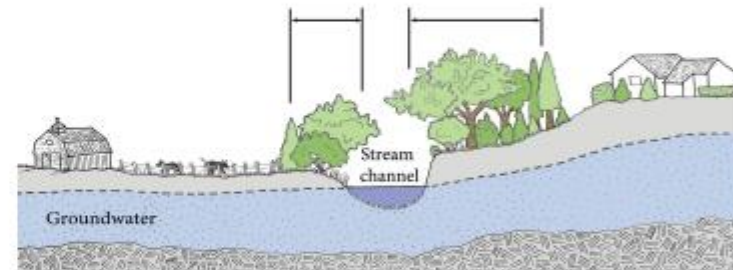
We can preserve stream buffers by allowing trees and shrubs to grow next to our waterways. Avoid mowing or animal grazing close to the water.

Narrow riparian zone

15 feet wide riparian zones along the waterway can help reduce erosion.

Wide riparian zone

At least a 50 foot buffer provides the best erosion protection, water quality and wildlife habitat.



Plant native Kentucky vegetation in your riparian zone. Native plants are adapted to our climate and promote our native wildlife. Contact the local UK Extension Office to learn which native plants are best suited for your waterway.



Learn more about our stream at the CREEC website



SPONSORED BY:



This work was funded in part by a grant from the U.S. Environmental Protection Agency under §519(b) of the Clean Water Act through the Kentucky Division of Water.



**BLUEGRASS
GREENSOURCE**



SIGN UP TO
STAY INFORMED

DONATE

VOLUNTEER

[HOME](#) [WHAT WE DO](#) [WHAT YOU CAN DO](#) [SUPPORT OUR WORK](#) [ABOUT US](#) [CONTACT US](#)



OUR PARTNERS

THANK YOU TO OUR PARTNERS!

We are creating a sustainable Central Kentucky thanks to the financial support we receive from our donors and the following community supporters both past and present. Don't see your business' name? If your company or organization is interested in sponsorship or partnership, please contact [Amy Sohner](#) for more info!

Ale 8 1	Cup of Commonwealth	Magic Beans Coffee Roasters	Stites and Harbison
Amazon Smile	US EPA – Office of Environmental Justice	Mark King and Associates	The Arboretum
Apollo Pizza	Farmer's National Bank	McBrayer, LLC	The Nature Conservancy
Bechtel-Parsons	Franklin County Fiscal Court	MCM CPAs and Advisors	The Nature Generation
Blue Grass Community Foundation	Garrard and Lincoln County Solid Waste	Mike's Hike and Bike	Total Quality Logistics
Bluegrass Sotheby's International Realty	Good Foods Co-op	National Fish and Wildlife Foundation	Toyota Motor Manufacturing of Kentucky
Broomwagon Coffee and Bike Shop	High on Art and Coffee	Nature's Thyme Herb Club	Traditional Bank
Café Meeples	Kentucky American Water	North Lexington Family YMCA	Triton International
Central Kentucky Hauling	Kentucky Division of Water	Pivot Brewing	University of Kentucky
Child Care Council	Kentucky Office of Energy Policy	Planet Salon	Valvoline
City of Danville	Kentucky River Authority	PNC Financial Services Group	Vendant Investments

Amy Sohner

Executive Director

amy@bggreensource.org

BGGREENSOURCE.ORG

859-266-1572



Facebook
Connect with us



Instagram
@bluegrassgreensource



Twitter
@bggreensource



YouTube
Subscribe



BLUEGRASS GREENSOURCE