

## Keep our commonwealth safe!

The Kentucky Division for Air Quality, U.S. EPA, DOT, and OSHA require specific work practices, training and engineering controls for asbestos projects designed to protect both workers and the general public. Please do not disturb suspected or confirmed asbestos containing materials without proper training.

Possible health risks from asbestos exposure:

- Respiratory Dysfunction
- Asbestosis
- Lung Cancer
- Mesothelioma



Examples of asbestos-containing materials:

- Pipe and duct insulation
- Fireproofing
- Drywall joint compound
- Vinyl flooring and mastics
- Plasters and textured ceilings
- Cementitious siding
- Window glazing
- Light fixture insulation
- Roofing felts, shingles and flashings
- Gaskets
- Textured paints
- Soffits
- Many other building materials

Asbestos is most hazardous when airborne fibers are inhaled. If you suspect asbestos contamination from a demolition or renovation, please call your regional air quality field office or 502-782-6592.

## Report asbestos concerns: 502-782-6592

Or contact one of these regional offices:

### Air Quality REGIONAL OFFICES

Ashland	(606) 929-5285
Bowling Green	(270) 746-7475
Florence	(859) 525-4923
Frankfort	(502) 564-3358
Hazard	(606) 435-6022
London	(606) 330-2080
Owensboro	(502) 782-9469
Paducah	(270) 898-8468

### OTHER CONTACTS

**24-hour Environmental Emergency:**  
**(800) 928-2380**

Louisville Metro APCD	(502) 574-6000
Division of Forestry	(502) 564-4496
Fire Marshal's Office	(502) 573-0382
Kentucky Fire Commission	(800) 782-6823
Division of Waste Mgmt.	(502) 564-6716
Dept. of Fish & Wildlife	(800) 858-1549



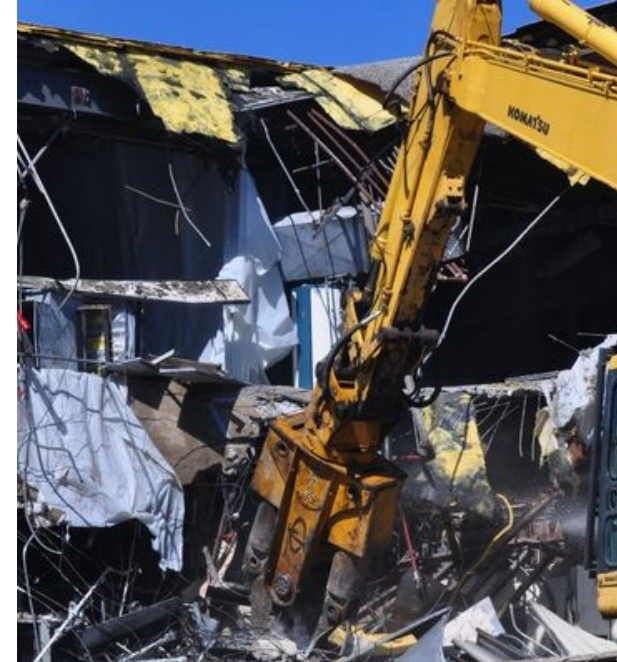
Division for Air Quality  
300 Sower Blvd., 2nd Floor  
Frankfort, KY 40601

Phone: (502) 564-3999  
Email: [Emma.Moreo@ky.gov](mailto:Emma.Moreo@ky.gov)

The Kentucky Energy and Environment Cabinet does not discriminate on the basis of race, color, national origin, sex, age, religion or disability, sexual orientation, gender identity, ancestry or veteran status, and provides, on request reasonable accommodations including auxiliary aids and services necessary to afford an individual with a disability an equal opportunity to participate in all services, programs and activities. To request materials in an alternative format, contact the Division. Hearing-and speech-impaired persons can contact the agency by using the Kentucky Relay Service, a toll-free telecommunication device for the deaf (TTY). For voice to TTY, call 1-800-648-6057. For TTY to voice, call 1-800-648-6056.

# ASBESTOS

What to know **before** your  
demolition or renovation



**FEDERAL AND STATE REGULATIONS APPLY  
TO DEMOLITIONS AND RENOVATIONS. YOU  
COULD BE FINED UP TO \$25,000 PER  
VIOLATION, PER DAY!**

Report asbestos concerns at 502-564-3999  
[Diana.Davidson@ky.gov](mailto:Diana.Davidson@ky.gov)

Kentucky Division for Air Quality  
[eec.ky.gov/asbestos](http://eec.ky.gov/asbestos)



## Demolition Requirements for non-exempt structures

- 1) Perform a thorough asbestos survey.
- 2) Submit notification to the Kentucky Division for Air Quality **at least 10 working days** prior to beginning any demolition or abatement activities. Notifications should be submitted online via the eForm system. Learn more at [eec.ky.gov/asbestos](http://eec.ky.gov/asbestos).
- 3) Work practices and disposal:
  - **No RACM:** No asbestos-specific work practices required. Demolition can begin 10 working days after notification.
  - **Less than 160 sq. ft., 260 linear ft., or 35 cubic ft. of RACM in project:** RACM removal recommended to be performed by a certified asbestos abatement contractor prior to demolition in compliance with Kentucky requirements for asbestos abatement projects. Demolition can begin 10 working days after notification.
  - **More than 160 sq. ft., 260 linear ft., or 35 cubic ft. of RACM in project:** A certified asbestos abatement contractor must remove and dispose of material prior to demolition in compliance with U.S. EPA and Kentucky requirements for NESHAP projects. Removal can begin 10 working days after notification.

**NOTE: All non-exempt structures are required to be surveyed thoroughly for the presence of asbestos-containing materials prior to demolition or renovation regardless of construction date.**

**Demolition or renovation?** Unless your structure is **exempt**, federal and state asbestos regulations apply to you! Read this brochure carefully to learn what requirements may apply to your project.

### Requirements may include:

- Thorough asbestos survey **prior to** demolition/renovation
  - Notification to the Division for Air Quality at least ten days prior to beginning demolition or renovation
- Removal of regulated asbestos-containing material prior to demolition or renovation

## Asbestos Definitions

**Certified Entity:** A company that has received a certificate to perform regulated asbestos abatement projects from KY Division for Air Quality. Only these companies may disturb or remove RACM.

**Demolition:** Wrecking or taking out any load-bearing member of a structure.

**Exempt Structures:** One single family residence or one apartment building with four or fewer units, whose demolition or renovation is not part of a larger project. Notification and survey requirements do not apply to these structures. OSHA requirements may apply to construction and general industry operations. **NOTE:** *If the structure has at any time been used for commercial purposes, it is NOT exempt regardless of present or future use.*

**Friable Asbestos:** Material found to contain >1% asbestos that can be crumbled with hand pressure when dry.

**NESHAP (National Emission Standards for Hazardous Air Pollutants):** The asbestos NESHAP protects the public by minimizing the release of asbestos fibers during renovation and demolition activities.

**RACM (Regulated Asbestos Containing Material):** Friable asbestos or non-friable materials in poor condition or subjected to forces that have rendered the material friable.

## Renovation Requirements for non-exempt structures

- 1) Perform a thorough asbestos survey.
- 2) **No RACM:**
  - No notification submittal required.
  - No asbestos-specific work practices required.
- 3) **Less than 160 sq. ft., 260 linear ft., or 35 cubic ft. of RACM in project:**
  - No notification submittal required.
  - RACM removal recommended to be performed by a certified asbestos abatement contractor prior to demolition in compliance with Kentucky requirements for asbestos abatement projects.
- 4) **More than 160 sq. ft., 260 linear ft., or 35 cubic ft. of RACM in project:**
  - Submit notification to the Kentucky Division for Air Quality **at least 10 working days** prior to beginning any renovation activities. Notifications should be submitted online via the eForm system. Learn more at [eec.ky.gov/asbestos](http://eec.ky.gov/asbestos)
  - Certified asbestos abatement contractor must remove and dispose of material prior to demolition in compliance with U.S. EPA and Kentucky requirements for NESHAP projects.

