



What is asbestos?

Asbestos is a group of naturally occurring minerals composed of thin, long fibers. These fibers are known for their strength, heat resistance and insulating properties. Various industries including the construction, automotive and manufacturing industries have utilized asbestos containing materials due to its versatility.

Types of Asbestos:

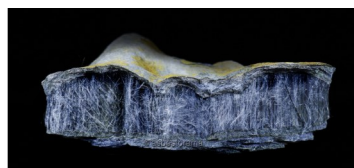
Asbestos Type	Common Places of Occurrence
Chrysotile (white asbestos)	Roofing materials, ceilings, walls, floors, brake parts, asphalt, gaskets, cement
Amosite (brown asbestos)	Insulation, cement sheets, pipes, roofing, ceiling tiles, other construction materials
Crocidolite (blue asbestos)	Insulation, pipes, cement products, tiling materials
Tremolite	Talc products, insulation, paint, fabric and textiles
Actinolite	Insulation, paint, sealants, drywall
Anthophyllite	Insulation, talc products, roofing materials



CHRYSOTILE



AMOSITE



CROCIDOLITE



TREMOLITE



ACTINOLITE



ANTHOPHYLLITE

How are people exposed to asbestos?

Exposure occurs when the microscopic asbestos fibers are released into the air after asbestos containing material is disturbed or damaged. Some ways that asbestos material is released into the air include when the material is damaged during demolition, remodeling, building maintenance and occurs as a building deteriorates.

If building materials in your home are not damaged and do not need to be disturbed, you do not need to have your home tested for asbestos. Material that is in good condition and will not be disturbed can be left alone.

What are the effects that asbestos has on human health?

When people inhale asbestos fibers, it increases their risk of developing lung disease. The greater the exposure to asbestos, the greater the chance of developing harmful health effects on the human body, so those working in the construction industry may be at a higher risk if they have been exposed to asbestos over years. Some diseases caused by asbestos exposure include:

- lung cancer;
- mesothelioma, a rare form of cancer that is found in the thin lining of the lungs, chest, abdomen and heart
- asbestosis, a serious progressive, long-term, non-cancer disease of the lungs.

Asbestos

I am doing a remodel/demolition at my property. Am I subject to the asbestos regulations?

Asbestos removal and disposal from a single-family home or apartments of four or less units are not regulated under Kentucky law. Nevertheless, it is advisable to seek help from a certified asbestos professional before performing remodeling or demolition projects, or if your house has damaged materials like crumbling drywall or insulation.

I am remodeling my home and I think I might have found asbestos. What should I do?

When uncertain, it is advisable to assume the material contains asbestos and avoid disturbing it. In most cases, visual inspection alone cannot determine the presence of asbestos in a material unless it is explicitly labeled. Consider hiring a certified asbestos inspector for a thorough inspection of your home and make sure the inspection will include a complete visual examination and if necessary, the collection and laboratory analysis of samples. If asbestos is found during an inspection, consider hiring a certified asbestos contractor to safely handle, remove or repair asbestos. They will properly dispose of the materials to minimize the release of asbestos fibers into the air you breathe.

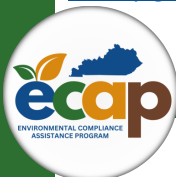
A list of Kentucky-certified asbestos abatement contractors can be found at: <https://dep.gateway.ky.gov/eSearch/AvailableReports/Details?id=42>

I have an apartment building with greater than four units or a public or commercial building that needs to be remodeled or demolished. What are Kentucky's asbestos regulations and requirements?

Any building structure, other than a private residence or apartment building with no more than four units may be subject to federal and state regulations when it comes to renovation and demolition.

First, an asbestos survey must be performed to determine the amount, if any, of regulated asbestos-containing material that is involved. Regulated Asbestos Containing Material (RACM) includes friable asbestos, nonfriable materials in poor condition and asbestos-containing materials that may be subjected to forces that render the material friable. "Friable" refers to material found to contain greater than one percent asbestos that can be crumbled with hand pressure when dry.

View the Kentucky Division for Air Quality's Asbestos Notification Website for more information on notification requirements for demolition and renovation: <https://eec.ky.gov/Environmental-Protection/Air/asbestos/Pages/Asbestos-Notifications.aspx>



When is a renovation/demolition project subject to asbestos regulations or requirements?

Government agencies, building owners, and/or their contractors may be required to perform an asbestos survey and submit a notification to the Kentucky Division for Air Quality before starting a renovation or demolition involving:

- Two or more single-family homes that are part of a commercial, public, State-issued project, installation, or development.
- Projects involving two or more apartment dwellings of any size.
- Single apartment dwellings with more than four units.
- Public, school, commercial, industrial structures, or buildings.

Depending on the amount and type of asbestos discovered, an asbestos professional may be required to perform the asbestos removal.

Asbestos Resources

- Kentucky Division for Air Quality Asbestos General Information Website:
 - ◆ <https://eec.ky.gov/Environmental-Protection/Air/asbestos>
- Kentucky Division for Air Quality Asbestos Notifications- Renovations and Demolition:
 - ◆ <https://eec.ky.gov/Environmental-Protection/Air/asbestos/Pages/Asbestos-Notifications.aspx>
- Kentucky Division for Air Quality Contact Information:
 - ◆ Phone: (502) 564-3999
 - ◆ Email: burnlaw@ky.gov
- [Asbestos Guidance Manual for Renovation and Demolition Projects](#) (ECAP)
- The Kentucky Occupational Safety and Health Program also regulate asbestos activities relating to worker safety: <https://kysafe.ky.gov/Pages/index.aspx>
- Additional restrictions may apply to asbestos removals in Jefferson County; please contact the Louisville Metro Air Pollution Control District (LMAPCD) directly for more information: <https://louisvilleky.gov/government/air-pollution-control-district>

The information in this document is offered only as general guidance. It is not a substitute for reading and understanding Kentucky's statutes and regulations governing the applicability and issuance of environmental permits. Specific requirements may vary with location. ECAP is not authorized to relieve any person from any requirement of federal regulations or Kentucky law through this document.

