



Easy LMS Instructions

Landfill Operator/Manager



Hello from Operator Certification,

As we move to online education we are trying a different way of delivery. The link below will take you to a series of prerecorded Landfill Operator/Manager webinars. You can watch and review these as many times as you like. These are not live events but you are required to take the training before your test. You will not be permitted to take an exam until the training has been complete.

Class Presentation:

<https://www.easy-lms.com/introduction-to-landfill-operator-manager-certification/course-55389>

Training Manual & Additional Study Material can be found at:

<https://eec.ky.gov/Environmental-Protection/Compliance-Assistance/operator-certification-program/Pages/test-preparation-materials.aspx>

LMS Instructions:

After clicking on the link above you will be directed to the presentation. Click on the Start button to begin.



Introduction to Landfill Operator/Manager Certification

Start



Easy LMS Instructions

Landfill Operator/Manager



The following slide introduces the subject matter and what to expect out of this course. If you are following along with the training manual this is listed as the table of contents.

Introduction to Landfill Operator/Manager Certification

Welcome to the Intro to Landfill Operator/Manager Course. In this online course you will learn the concepts and processes that are involved in operating and managing a landfill. Specifically, the course will cover the following topics:

- Certification and Licensing Program
- Operating Your Landfill
- Landfill Categories
- Landfill Equipment
- Landfill Safety
- Permitting Process and Operating Conditions
- Facility Management
- Monitoring Your Landfill
- Waste Stream Composition and Decomposition
- Residual Landfill
- Special Waste Landfill
- Construction/Demolition Debris (CDD) Landfill
- Contained Landfill
- Other Regulations



When finished with the introduction page click on the Next button.



Easy LMS Instructions

Landfill Operator/Manager



To continue, an account will need to be created. This helps us to know who has access to our training videos and if needed, we can verify which courses you've completed.

You will have to supply your name and email address (preferably not a facility address) when you watch the videos. You will also need to provide a username, password and the name you have on file with the Operator Certification Program. If you are already an operator and know your agency interest number please add it to the registration as well. This will help to ensure the correct person gets credit (if applicable) for watching these courses.

Already registered? Login here

Email address *

envhelp@ky.gov

Your password *

.....

[Oh no! I forgot my password!](#)

Start

Create account and start

Email address *

Your username *

Your password *

Repeat your password *

First and Last Name *

Agency Interest Number (If known, found on wallet card)

Start



Once you have completed the registration portion click on the Start button.



Easy LMS Instructions

Landfill Operator/Manager



The next page obtains links to the Training Manual, Math Study Guide, and Formula Sheet. You will have to scroll down to see the links. Each link will open in a separate window for your convenience.

Landfill Manager Course Materials (scroll down)



The following materials will help you in understanding of the basics principles of operating and managing a landfill. The program recommends that you read the Landfill Manager Manual in addition to watching the educational videos.

[Landfill Manager Manual](#)

Click on the Next button to continue with the presentation.



Easy LMS Instructions

Landfill Operator/Manager

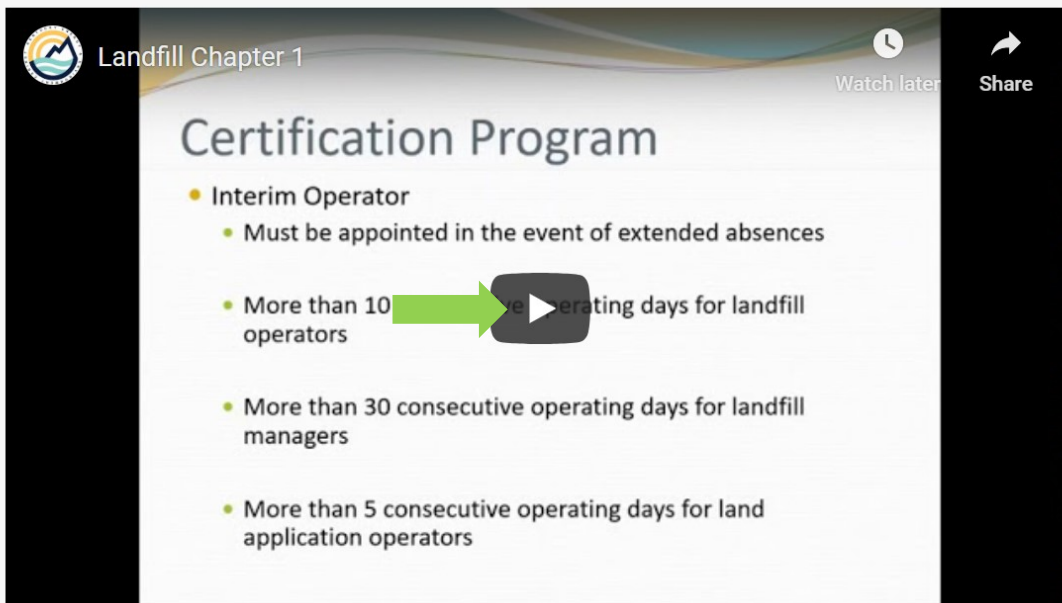


Each page will list the chapter and title. Scroll down for the Learning Objective and to view the recorded webinar. Click on the Play button which is located in the middle of the video to get started.



Learning Objectives:

- Understand and be able to apply the Kentucky regulations relating to the certification requirements for solid waste facilities.



Once you have completed the webinar click on the Next button. This will take you to the next chapter of the recorded webinar. Follow these steps until you've completed all chapters.



Easy LMS Instructions

Landfill Operator/Manager



Once all chapters have been completed you can close out of the webinar. You can log in and watch the recorded webinars as many times as you'd like. At this time continuing education credit hours are not being tracked by the Operator Certification Program. These prerecorded webinars are being provided to help you study for your examination.



You've completed the course!

Should you have questions about any of the content, you can contact one of our trainers at Byron.Bland@ky.gov or Richard.Seiler@ky.gov. We can schedule virtual review should you want one.