

DIVISION OF WATER

300 Sower Boulevard, Frankfort, KY 40601
Phone: 502.564.3410

Sarah Gaddis, Director

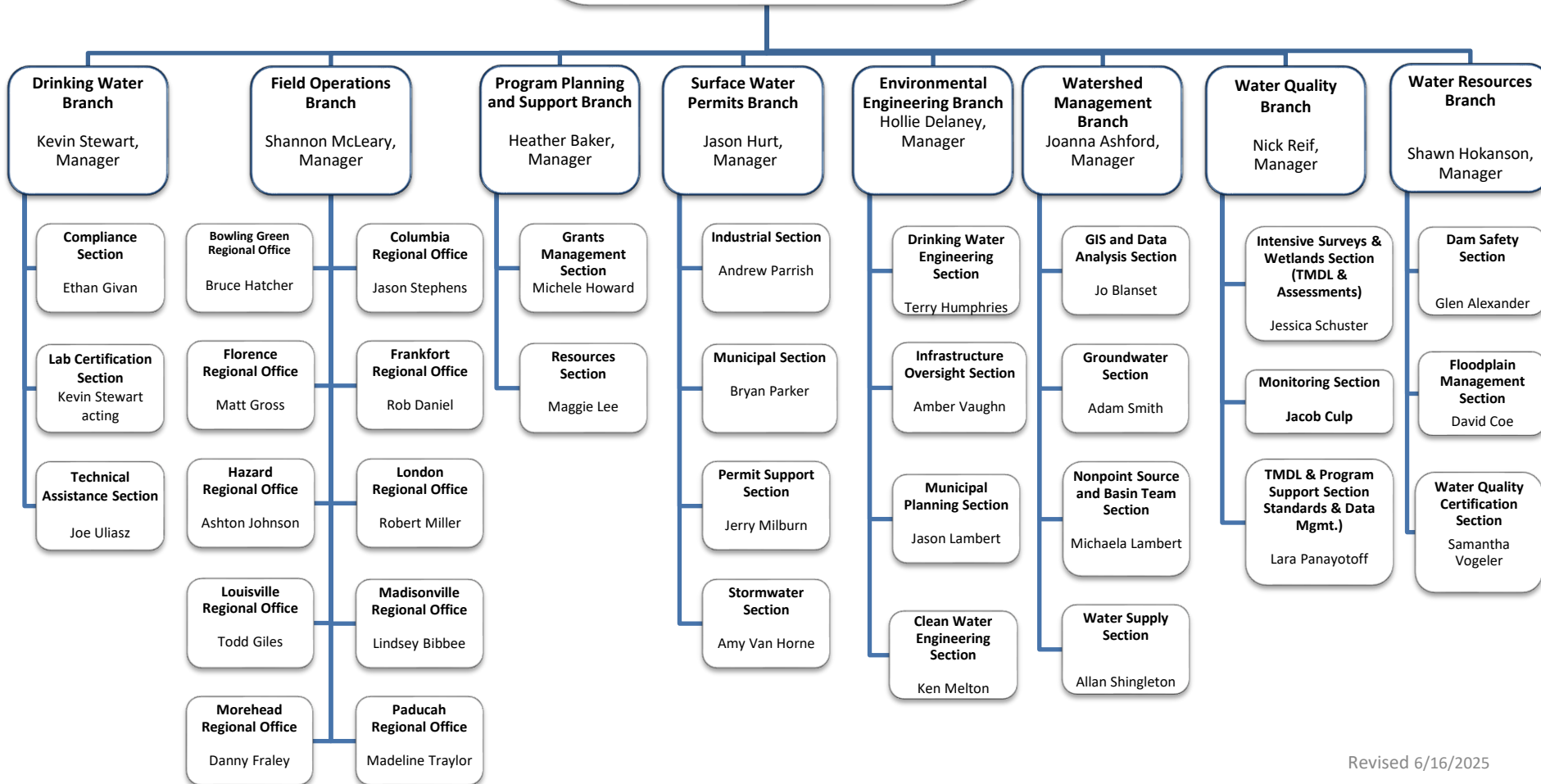
John Webb, Assistant Director II

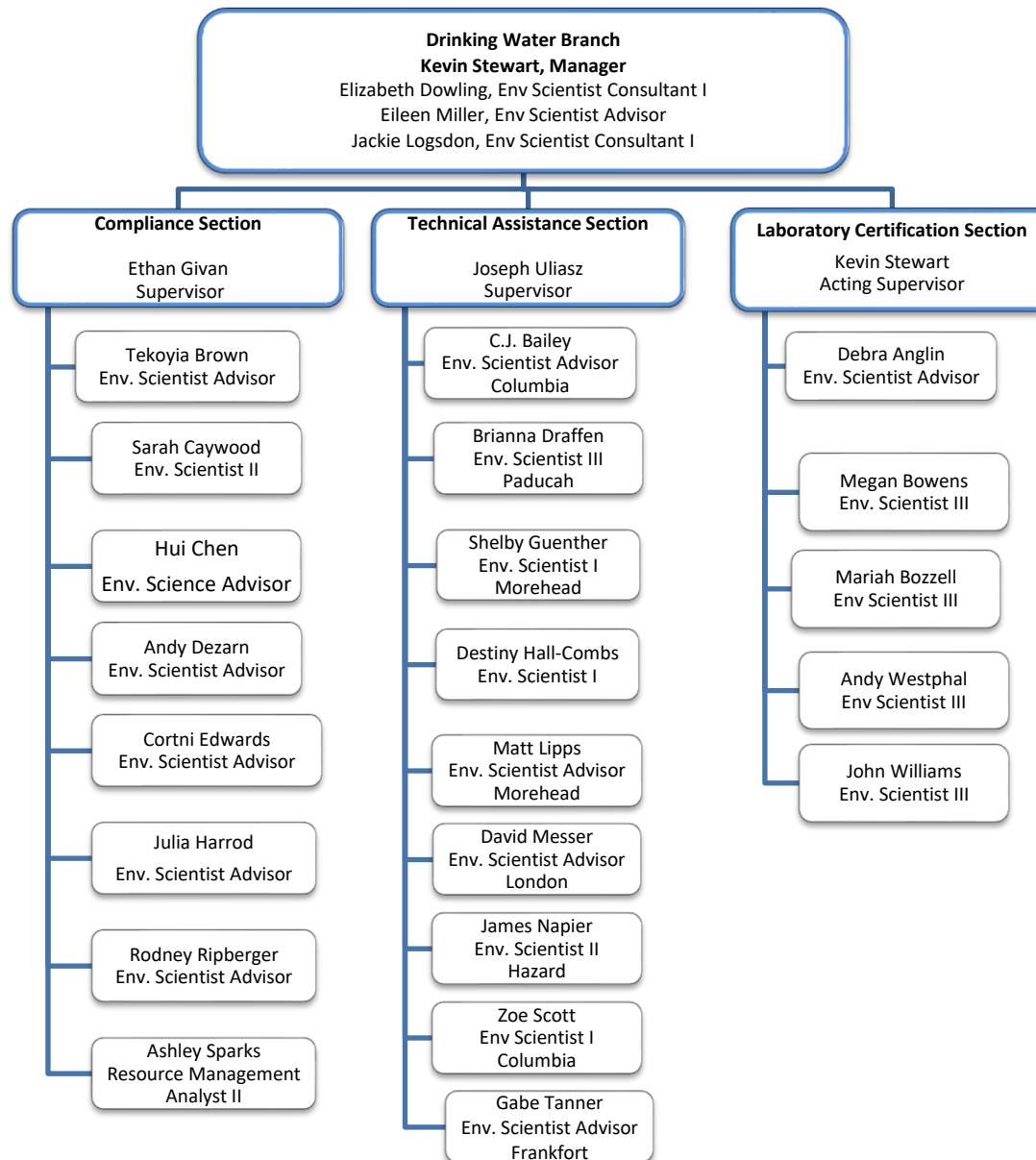
Melanie Arnold, Env Sci Consultant II

Jory Becker, Env Engineer Consultant

John Carlton, Admin Spec Senior

Josiah Frey, Env Sci Consultant II





Field Operations Branch
Shannon McLeary, Manager
Bill Baker, Env Scientist Consultant
Brian Crump, Env Scientist Consultant
Stefanie Osterman, Env Scientist Advisor
Lorrie Rhodes, Program Coordinator
Andrew Wooldridge, Env. Scientist II

**Bowling Green
Field Office**

Bruce Hatcher
Supervisor

Ethan Morgan
Env. Scientist Advisor

Thomas Nicotera
Geologist III

Alex Sitz
Env. Scientist I

Justin Spears
Env. Scientist III

**Columbia
Field Office**

Jason Stephens
Supervisor

Justin Atkinson
Env. Scientist I

Dwayne Barnes
Env. Scientist Advisor

Jamie Powell
Admin. Specialist Senior

Levi Ramage
Env. Scientist I

Patrick Shofner
Env. Scientist I

**Florence
Field Office**

Matt Gross
Supervisor

Abigail Harris
Env. Scientist Advisor

Jeffrey Malsi
Env. Scientist Advisor

Adam Smith
Env. Scientist II

Anna Young
Env. Scientist II

**Frankfort
Field Office**

Rob Daniell
Supervisor

John Hanks
Env. Scientist Advisor

Jarod Jones
Env. Scientist II

Deborah Singleton
Env. Scientist Advisor

**Hazard
Field Office**

Ashton Johnson
Supervisor

Jerry Back
Env. Scientist Advisor

Robert Back
Env. Scientist Advisor

Michael Carwell
Env. Scientist I

Joshua George
Env. Scientist Advisor

Lonnie Klopp
Env. Scientist Advisor

Wade Maggard
Env. Scientist Advisor

Field Operations Branch cont.
Shannon McLeary, Manager
Bill Baker, Env Scientist Consultant
Brian Crump, Env Scientist Consultant
Stefanie Osterman, Env Scientist Advisor
Lorrie Rhodes, Program Coordinator
Andrew Wooldridge, Env. Scientist II

**London
Field Office**

Robert Miller
Supervisor

Walter Brumley
Env. Scientist I

Eddie Paige
Env. Scientist III

Kendra Tinchler
Admin. Specialist Senior

Beth Trent
Env. Scientist Advisor

Ryan Wilson
Env. Scientist Advisor

**Louisville
Field Office**

Todd Giles
Supervisor

Sarah Duker
Env Scientist III

Jody Eilers
Env. Scientist Advisor

Bridgett Miniard
Env. Scientist I

Sara Stewart
Env. Scientist Advisor

**Madisonville
Field Office**

Lindsey Bibbee
Supervisor

Mikayla Baize
Env. Scientist I

Greg Logsdon
Env Science Advisor

April Rich
Env. Scientist II

Bruce Sampson
Env. Scientist Advisor

**Morehead
Field Office**

Danny Fraley
Supervisor

James Bevins
Env Scientist Advisor

Ashley Bowen
Env. Scientist Advisor

Corey Craft
Env. Scientist Advisor

Corrina Middleton
Admin. Specialist Senior

Thomas Nelson
Geologist III

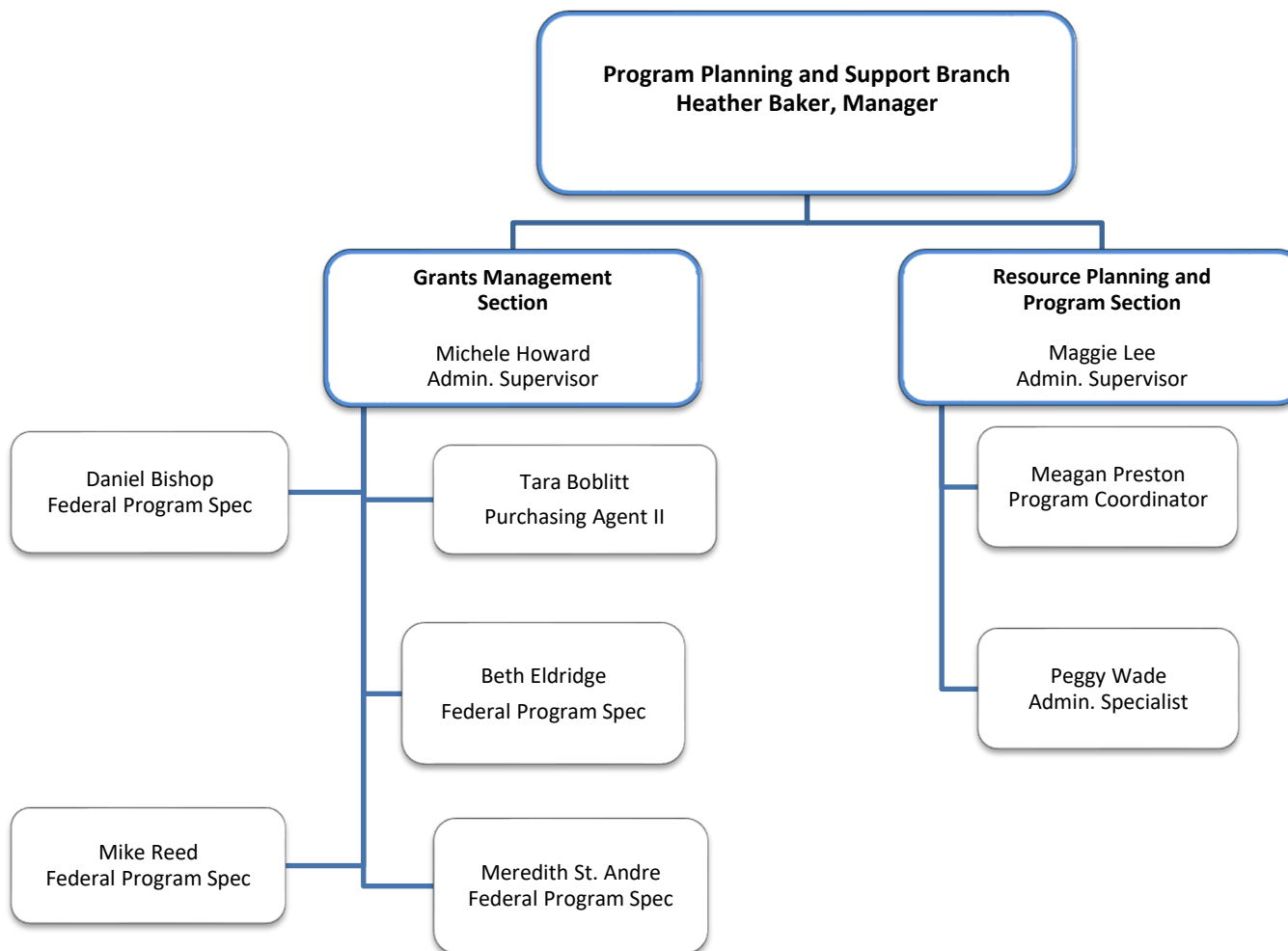
**Paducah
Field Office**

Madeline Traylor
Supervisor

Matthew Harper
Env. Scientist I

JD McClanahan
Env. Scientist I

Jessie York
Env. Scientist Advisor



Surface Water Permits Branch
Jason Hurt, Manager

Barry Elmore, Env. Engineer Consultant
Greg Goode, Env. Engineer Consultant
Robin Snider, RMA III

Industrial Section

Andrew Parrish
Supervisor

Tyler Cook
Env. Scientist Advisor

Sanjay Dulabh
Env. Engineer Tech II

Matthew Fields
Env. Scientist Advisor

Brenda Pecheco
Env. Engineer Technologist II

Abbas Pourghasemi
Env. Engineer Technologist II

Ronnie Thompson
Env. Scientist Advisor

Permit Support Section

Jerry Milburn
Admin. Supervisor

Crystal Dennis
RMA II

Madison Garrett
RMA I

Mel Grissom
Program Coordinator

Joy Haden
Program Coordinator

Reedus Lee
RMA III

Stormwater Section

Amy Van Horne
Supervisor

JP Beard
Env. Scientist III

Rebecca Graves
Env. Scientist Advisor

Ethan Lewis
Env. Scientist I

Paul Tangel
Env. Engineer Technologist II

Shannon Urbanik
Env. Engineer I

Emily Jayne
Env. Scientist Advisor

Municipal Section

Bryan Parker
Supervisor

Nicholas Bradford
Env. Engineer Tech I

Paul Bridges
Env. Engineer II

Sam Burns
Env. Engineer Technologist. II

Erich Cleaver
Env. Scientist Advisor

Lucas Hanks
Env. Scientist Advisor

Abby Rains
Env. Scientist Advisor

Mays Zaidan
Env. Eng. Technologist I

Water Infrastructure Branch
Hollie Delaney, Manager
Lori Dials, Env. Scientist Advisor
Lissa Doss, Program Coordinator

Drinking Water Engineering Section

Terry Humphries
Supervisor

Cassie Campbell
Env. Engineer II

Stephan Kietz
Env. Engineer Tech II

Serena Male
Env. Engineer Tech I

Brett Thompson
Env. Eng Technologist II

Municipal Planning Section

Jason Lambert
Supervisor

John Berlejung
Env. Scientist II

Angela Billings
Env Scientist Advisor

Casey Greer
Env Scientist II

Lyndsi Hersch
Env Scientist Advisor

Ryan Reed
Env. Scientist Advisor

Nia Rivers
Env. Scientist Advisor

Matthew White
Env. Scientist II

Infrastructure Oversight Section

Amber Vaughn
Admin. Supervisor

Luke Morgan
Grants Administrator

Mercy Osuala
Grants Administrator

Clean Water Engineering Section

Ken Melton
Supervisor

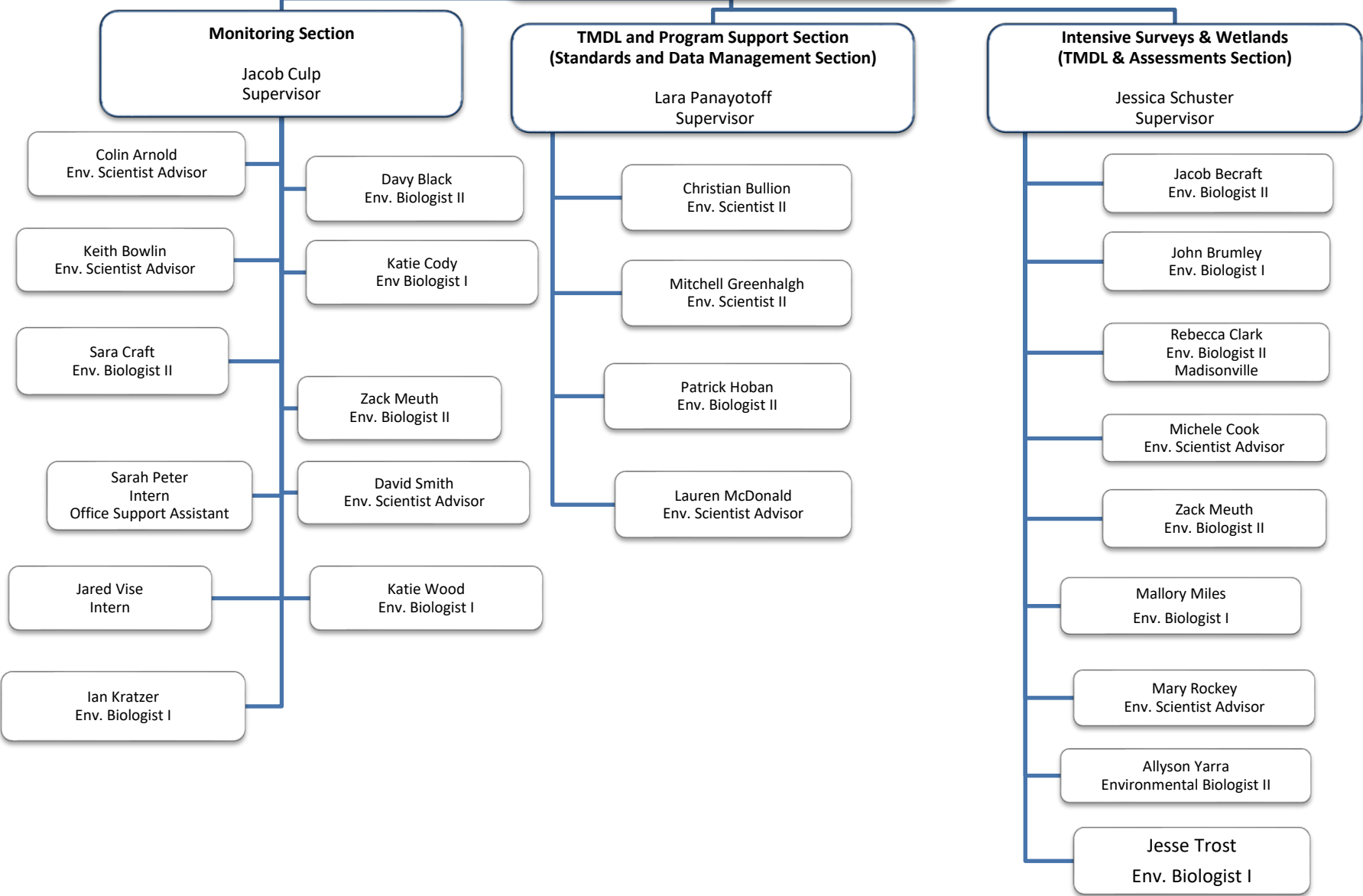
Tony Butera
Env. Engineer Tech I

Daniel Kulik
Env. Engineer II

Amanda Mikuski
Env. Engineer II

Mark Rasche
Env. Engineer II

Water Quality Branch
Nick Reif, Branch Manager
Andrea Fredenburg, Env. Scientist Consultant I
Katie McKone, Env. Scientist Consultant I



Water Resources Branch
Shawn Hokanson, Manager
Kaycie Len Carter, Env Scientist Consultant
Alex VanPelt, Env Scientist Advisor

Dam Safety Section

Glen Alexander
Supervisor

Beth Harrod
Env Engineer II

Joselin Rodriguez
Env Engineer Technologist I

Marilyn Thomas
Env Engineer II

Gary Wells
Env. Engineer II

Floodplain Management Section

David Coe
Supervisor

Kathy Allen
Env Scientist III

Marouf Bar
Env. Engineer Tech I

Soheyl Bigdeli
Env Engineer Technologist I

Kate Carigan
Env Scientist III

Solitha Dharman
Env Engineer II

Sam McElhannon
Env Engineer Tech I

Jim Oerther
Env Engineer Tech II

Water Quality Certification Section

Samantha Vogeler
Supervisor

Andrea Dustin
Environmental Biologist II

Kristine Gauthier
Env Scientist II

Michael Heyn
Env Scientist Advisor

Bryan Killian
Env Scientist II

Ben Lindsay
Env. Biologist II

Watershed Management Branch
Joanna Ashford, Manager

Paulette Akers, Env. Scientist Advisor
Caroline Chan, Env. Scientist Consultant I
Bill Caldwell, Env. Scientist Consultant I
Ben Currens, Env. Scientist Consultant I
Jill Wilhelm, Admin. Specialist Senior

GIS & Data Analysis Section

Jo Blanset
Supervisor

Will Goodman
Geoprocessing Spec II

Megan Martin
Geoprocessing
Specialist II

Susanne Peake
Geoprocessing Spec I

Jim Seay
Geoprocessing Spec III

Samuel Sapeta
Geoprocessing Spec II

Wes Turner
Env Scientist Advisor

Groundwater Section

Adam Smith
Supervisor

Zachary Campbell
Env Scientist III

Tim Collins
Env. Scientist IV

Bronson McQueen
Geologist III

Megan Sideway
Env Scientist I

Kurtis Spears
Env Scientist Advisor

**Nonpoint Source & Basin Team
Section**

Michaela Lambert
Supervisor

Nate Alexander
Env. Scientist II

Haileigh Arnold
Env. Scientist II

Colin Duncan
Env. Scientist II

Amber Hawkins
Env. Scientist Advisor

Alice Mandt
Env. Scientist Advisor

Jo Ann Palmer
Program Coordinator

Amy Rhorer
Env Scientist I

Brian Storz
Env. Scientist Advisor

Water Supply Section

Alan Shingleton
Supervisor

Dale Booth
Env. Scientist Advisor

Rita Hockensmith
Resource Mgmt. Analyst III

Ryan Parks
Geologist II

Chip Zimmer
Env. Scientist Advisor