

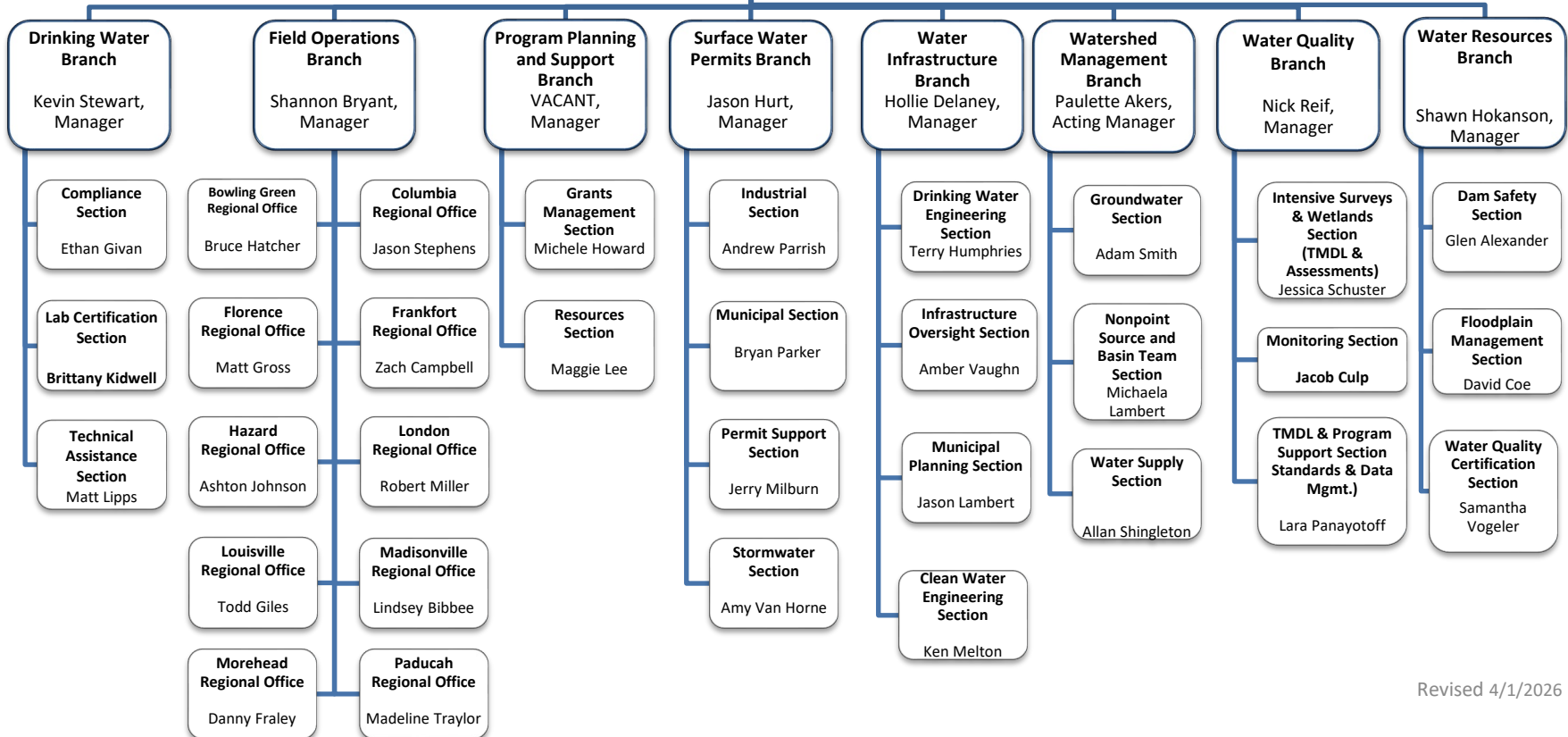
**DIVISION OF WATER**

300 Sower Boulevard, Frankfort, KY 40601  
Phone: 502.564.3410

**Sarah Marshall, Director**  
**Joanna Ashford, Assistant Director II**  
**John Webb, Assistant Director II**  
Lisa Jones, Env. Scientist Consultant II

**Joanna Ashford**  
**Assistant Director II**  
VACANT, Manager  
Jason Hurt, Manager  
Nick Reif, Manager  
Paulette Akers, Acting manager

**John Webb**  
**Assistant Director II**  
Jory Becker, Env. Engineer Consultant  
Shannon Bryant, Manager  
Hollie Delaney, Manager  
Josiah Frey, Env. Scientist Consultant II  
Shawn Hokanson, Manager  
Kevin Stewart, Manager



**Drinking Water Branch**  
**Kevin Stewart, Manager**  
Elizabeth Dowling, Env Scientist Consultant I  
Eileen Miller, Env Scientist Advisor  
Jackie Logsdon, Env Scientist Consultant I

**Compliance Section**  
Ethan Givan  
Supervisor

- Tekoyia Brown  
Env. Scientist Advisor
- Sarah Caywood  
Env. Scientist II
- Hui Chen  
Env. Scientist Advisor
- Andy Dezarn  
Env. Scientist Advisor
- Cortni Edwards  
Env. Scientist Advisor
- Julia Harrod  
Env. Scientist Advisor
- Rodney Ripberger  
Env. Scientist Advisor
- Ashley Sparks  
IT Business Analyst

**Technical Assistance Section**  
Matt Lipps  
Supervisor

- C.J. Bailey  
Env. Scientist Advisor  
Columbia
- Brianna Draffen  
Env. Scientist III  
Paducah
- Shelby Guenther  
Env. Scientist I  
Morehead
- Destiny Hall-Combs  
Env. Scientist II
- Matt Lipps  
Env. Scientist Advisor  
Morehead
- VACANT  
London
- James Napier  
Env. Scientist II  
Hazard
- Zoe Scott  
Env Scientist III  
Columbia
- Gabe Tanner  
Env. Scientist Advisor  
Frankfort

**Laboratory Certification Section**  
Brittany Kidwell  
Supervisor

- Debra Anglin  
Env. Scientist Advisor
- Megan Bowens  
Env. Scientist III
- Andy Westphal  
Env Scientist III
- John Williams  
Env. Scientist III

**Field Operations Branch**  
**Shannon Bryant, Manager**  
Bill Baker, Env Scientist Consultant  
Brian Crump, Env Scientist Consultant  
Sarah Jon Hail, Env. Scientist Consultant I  
Stefanie Osterman, Env Scientist Advisor  
Lorrie Rhodes, Program Coordinator  
Andrew Wooldridge, Env. Scientist II

**Bowling Green Field Office**  
Bruce Hatcher  
Supervisor

**Columbia Field Office**  
Jason Stephens  
Supervisor

**Florence Field Office**  
Matt Gross  
Supervisor

**Frankfort Field Office**  
Zach Campbell  
Supervisor

**Hazard Field Office**  
Ashton Johnson  
Supervisor

Todd Johnson  
Env. Scientist III

Ethan Morgan  
Env. Scientist Advisor

Thomas Nicotera  
Env. Scientist III

Justin Spears  
Env. Scientist III

Justin Atkinson  
Env. Scientist II

Dwayne Barnes  
Env. Scientist Advisor

Annamarie Pinson  
Env. Scientist I

Jamie Powell  
Program Coordinator

Levi Ramage  
Env. Scientist II

Abigail Harris  
Env. Scientist Advisor

Jeffrey Malsi  
Env. Scientist Advisor

Adam Smith  
Env. Scientist Advisor

Anna Young  
Env. Scientist Advisor

John Hanks  
Env. Scientist Advisor

Jarod Jones  
Env. Scientist III

Deborah Singleton  
Env. Scientist Advisor

Robert Back  
Env. Scientist Advisor

Michael Carwell  
Env. Scientist II

Joshua George  
Env. Scientist Advisor

Dalton Holbrook  
Env. Scientist I

Wade Maggard  
Env. Scientist Advisor

**Field Operations Branch cont.**  
**Shannon Bryant, Manager**  
Bill Baker, Env Scientist Consultant  
Brian Crump, Env Scientist Consultant  
Sarah Jon Hail, Env. Scientist Consultant  
Stefanie Osterman, Env Scientist Advisor  
Lorrie Rhodes, Program Coordinator  
Andrew Wooldridge, Env. Scientist II

**London  
Field Office**  
Robert Miller  
Supervisor

**Louisville  
Field Office**  
Todd Giles  
Supervisor

**Madisonville  
Field Office**  
Lindsey Bibbee  
Supervisor

**Morehead  
Field Office**  
Danny Fraley  
Supervisor

**Paducah  
Field Office**  
Madeline Traylor  
Supervisor

Walter Brumley  
Env. Scientist I

Eddie Paige  
Env. Scientist Advisor

Kendra Tincher  
Program Coordinator

Beth Trent  
Env. Scientist Advisor

Ryan Wilson  
Env. Scientist Advisor

Sarah Duker  
Env Scientist Advisor

Jody Eilers  
Env. Scientist Advisor

Bridgett Miniard  
Env. Science Advisor

Sara Stewart  
Env. Scientist Advisor

Mikayla Baize  
Env. Scientist II

Greg Logsdon  
Env Science Advisor

April Rich  
Env. Scientist III

Bruce Sampson  
Env. Scientist Advisor

James Bevins  
Env Scientist Advisor

Ashley Bowen  
Env. Scientist Advisor

Corey Craft  
Env. Scientist Advisor

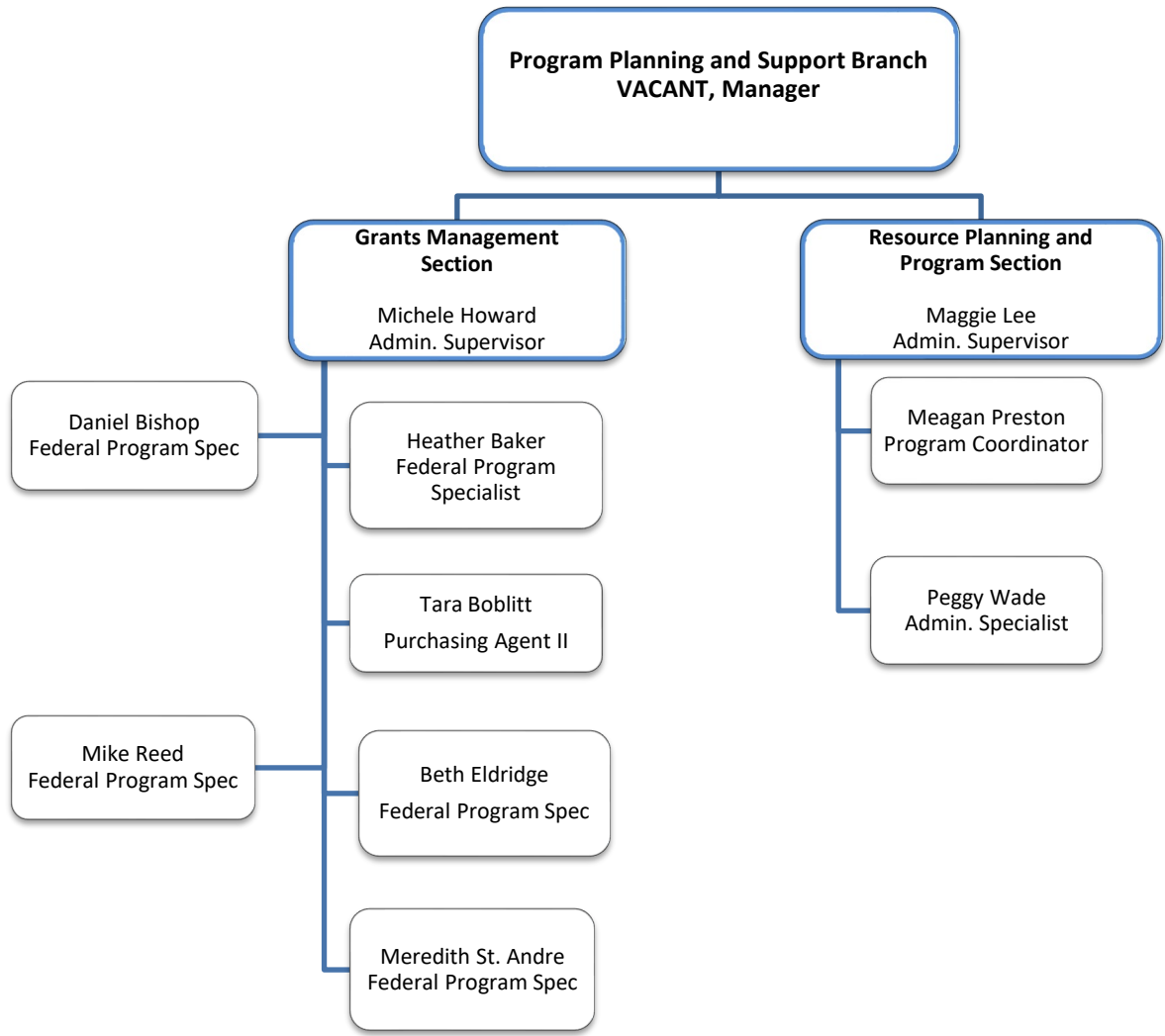
Corrina Middleton  
Program Coordinator

Thomas Nelson  
Geologist III

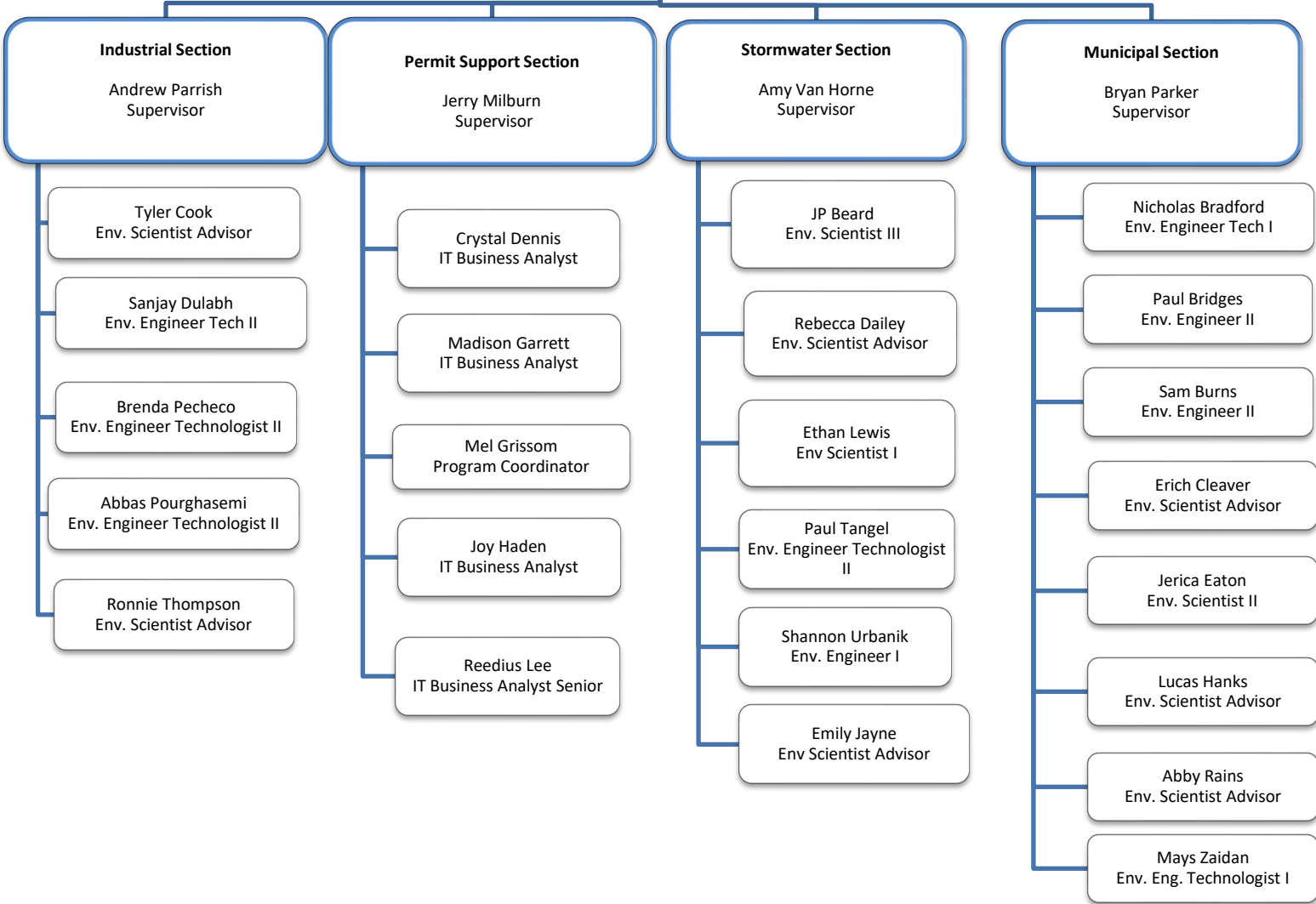
Matthew Harper  
Env. Scientist II

JD McClanahan  
Env. Scientist I

Jessie York  
Env. Scientist Advisor



**Surface Water Permits Branch**  
**Jason Hurt, Manager**  
Barry Elmore, Env. Engineer Consultant  
Greg Goode, Env. Engineer Consultant  
Robin Snider, IT Business Analyst



**Water Infrastructure Branch**  
**Hollie Delaney, Manager**  
Lori Dials, Env. Scientist Consultant I  
Lissa Doss, Program Coordinator

**Drinking Water Engineering Section**

Terry Humphries  
Supervisor

Cassie Campbell  
*Env. Engineer II*

Stephen Kietz  
Env. Engineer Tech II

Serena Male  
Env. Engineer Tech I

Brett Thompson  
*Env. Eng Technologist II*

**Municipal Planning Section**

Jason Lambert  
Supervisor

John Berlejung  
Env. Scientist II

Angela Billings  
Env Scientist Advisor

Casey Greer  
Env Scientist II

Lyndsi Hersch  
Env Scientist Advisor

Ryan Reed  
*Env. Scientist Advisor*

Nia Rivers  
*Env. Scientist Advisor*

Matthew White  
Env. Scientist II

**Infrastructure Oversight Section**

Amber Vaughn  
Supervisor

Luke Morgan  
*Grants Administrator*

**Clean Water Engineering Section**

Ken Melton  
Supervisor

Tony Butera  
Env. Engineer Tech I

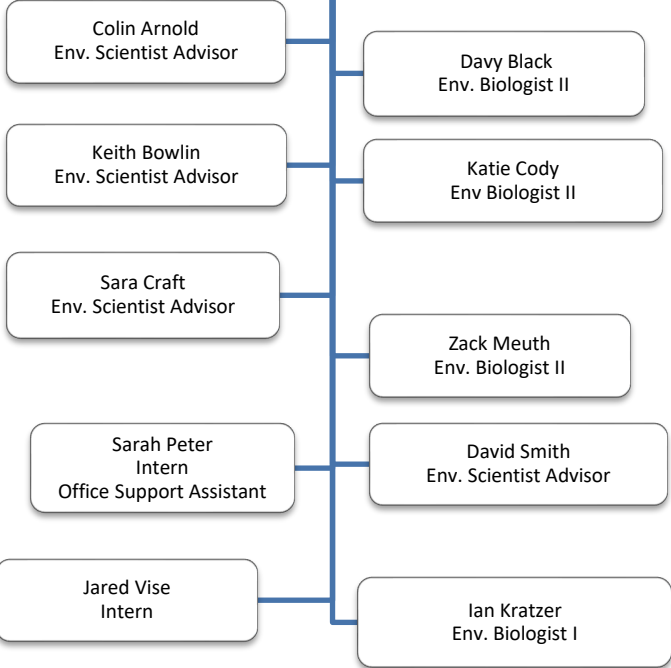
Daniel Kulik  
Env. Engineer II

Amanda Mikuski  
Env. Engineer II

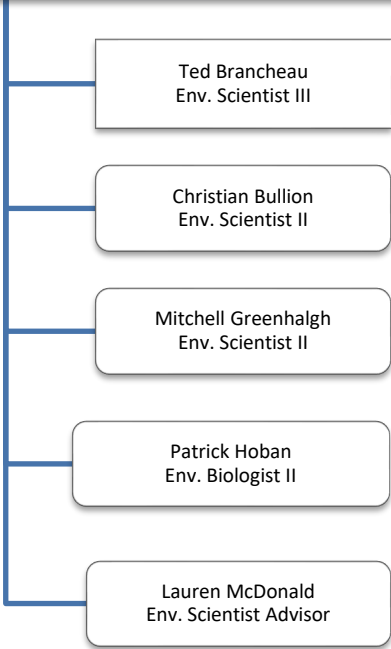
Mark Rasche  
Env. Engineer II

**Water Quality Branch**  
**Nick Reif, Branch Manager**  
Andrea Fredenburg, Env. Scientist Consultant I  
Katie McKone, Env. Scientist Consultant I

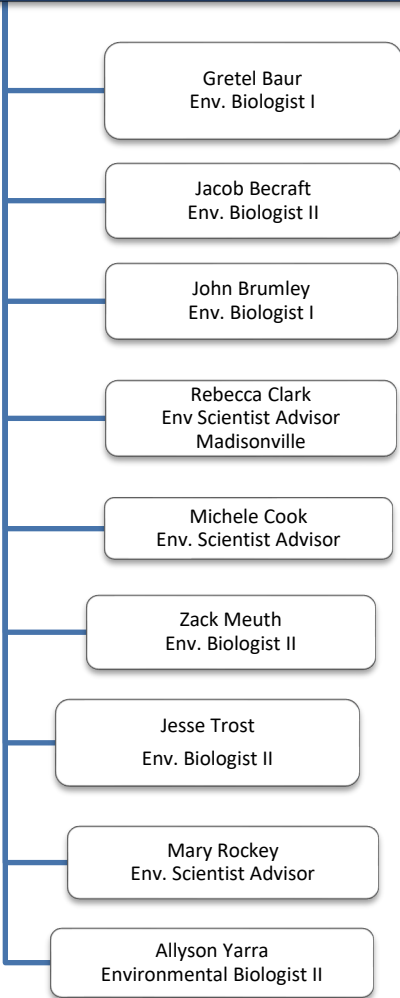
**Monitoring Section**  
Jacob Culp  
Supervisor



**TMDL and Program Support Section  
(Standards and Data Management Section)**  
Lara Panayotoff  
Supervisor



**Intensive Surveys & Wetlands  
(TMDL & Assessments Section)**  
Jessica Schuster  
Supervisor



**Water Resources Branch  
Shawn Hokanson, Manager**

Kaycie Len Carter, Env Scientist Consultant  
Alex VanPelt, Env Scientist Advisor

**Dam Safety Section**

Glen Alexander  
Supervisor

Beth Harrod  
Env Engineer II

Joselin Rodriguez  
Env Engineer Technologist I

Marilyn Thomas  
Env Engineer II

**Floodplain Management Section**

David Coe  
Supervisor

Kathy Allen  
Env Scientist III

Marouf Bar  
Env. Engineer Tech II

Soheyl Bigdeli  
Env Engineer Technologist I

Kate Carigan  
Env Scientist III

Solitha Dharman  
Env Engineer II

Sam McElhannon  
Env Engineer Tech I

**Water Quality Certification Section**

Samantha Vogeler  
Supervisor

Andrea Dustin  
Environmental Biologist II

Michael Heyn  
Env Scientist Advisor

Kristine Howard  
Env Scientist II

Bryan Killian  
Env Scientist III

Ben Lindsay  
Env. Biologist II

**Watershed Management Branch**  
**Paulette Akers, Acting Manager**  
Paulette Akers, Env. Scientist  
Bill Caldwell, Env. Scientist Consultant I  
Jo Blanset, Env. Scientist Consultant I  
Caroline Chan, Env. Scientist Consultant I  
Ben Currens, Env. Scientist Consultant I  
Jill Wilhelm, Admin. Specialist Senior

**Groundwater Section**  
Adam Smith  
Supervisor

Tim Collins  
Env. Scientist Advisor

Bronson McQueen  
Env. Scientist Advisor

Megan Sideway  
Env. Scientist II

Kurtis Spears  
Env. Scientist Advisor

**Nonpoint Source & Basin Team Section**  
Michaela Lambert  
Supervisor

Haileigh Arnold  
Env. Scientist III

Colin Duncan  
Env. Scientist II

Alice Mandt  
Env. Scientist Advisor

Jo Ann Palmer  
Program Coordinator

Amy Rhorer  
Env. Scientist II

Brian Storz  
Env. Scientist Advisor

**Water Supply Section**  
Alan Shingleton  
Supervisor

Dale Booth  
Env. Scientist Advisor

Rita Hockensmith  
Systems Administrator

Ryan Parks  
Env. Scientist II

Chip Zimmer  
Env. Scientist Advisor

Wes Turner  
Env. Scientist Advisor