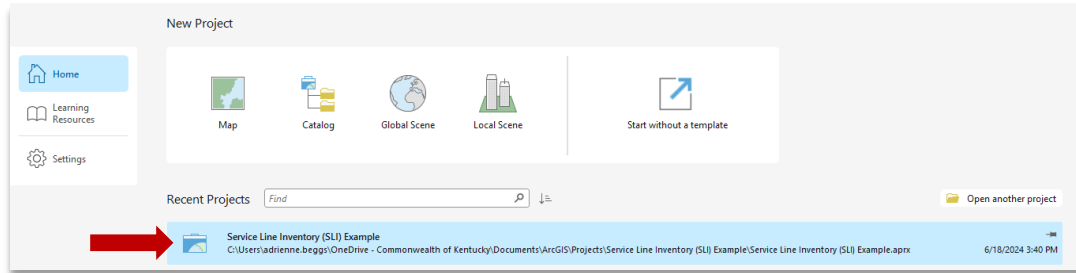
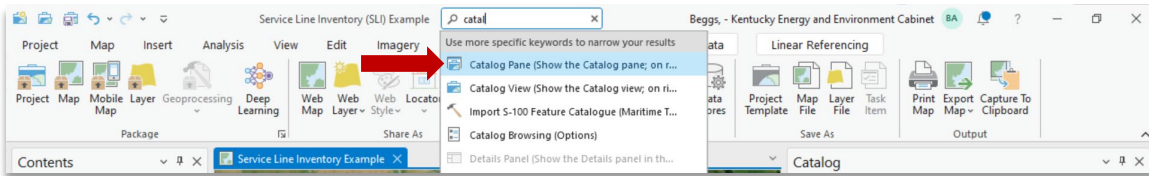


# Creating a Zip File from a Geodatabase (in ArcGIS Pro)

I. Navigate to ArcGIS Pro and open the project you wish to export and share.

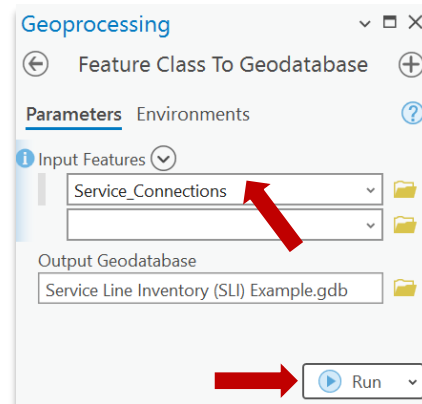
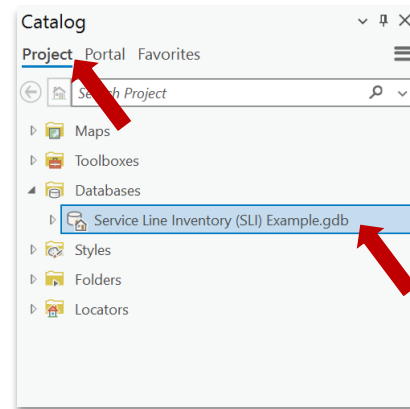
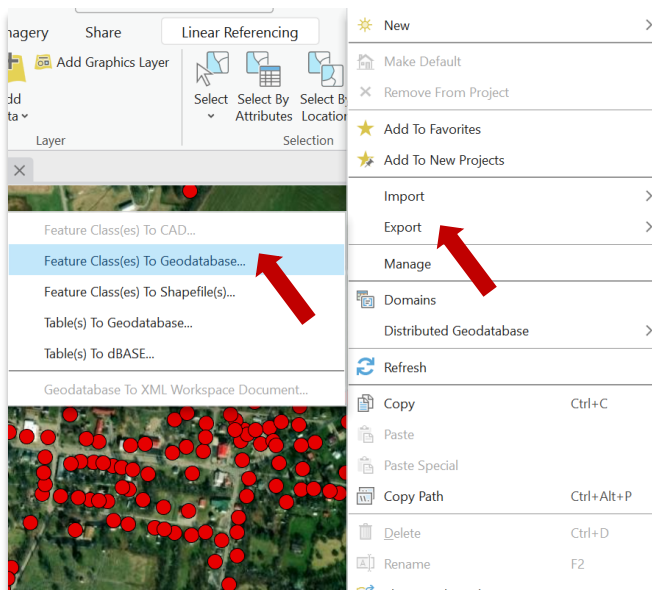



II. After opening the project → Open the “Catalog” Pane (Type Catalog in the Search bar and double click)




III. Click on the “Project” heading → Find the Geodatabase you wish to export (it may be located under Databases or Folders) → Right click on the Geodatabase.

IV. Another window will pop-up → Click Export → Click “Feature Class(es) to Geodatabase”.

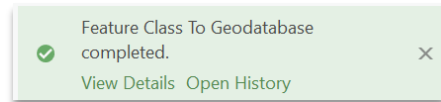


V. The Geoprocessing Pane will appear → Select all the feature classes you wish to share in the “Input Features” drop down → Click  Run.

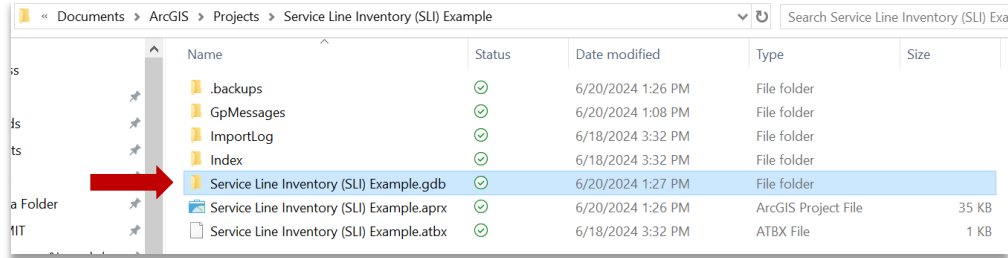
a. To change the file location of the output geodatabase, click on the file icon  next to output geodatabase.

# Creating a Zip File from a Geodatabase (in ArcGIS Pro)

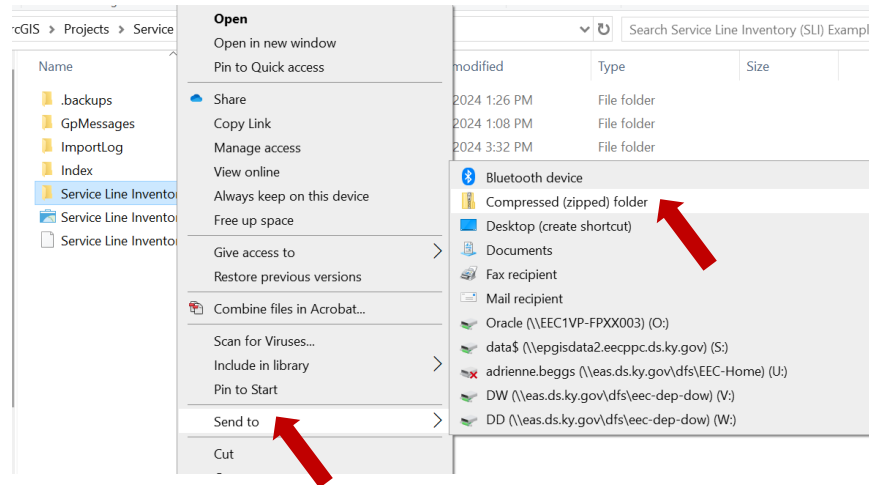
VI. You should receive a green message like that on the right. You can now go to the file path where the output geodatabase is located.



a. In this example the exported geodatabase was placed in the same folder the original project was located.



VII. Since geodatabases can be large files, right click on the output folder → Click Send to → Click Compressed (zipped) folder.



VIII. There is now Zip file located in the same folder.

