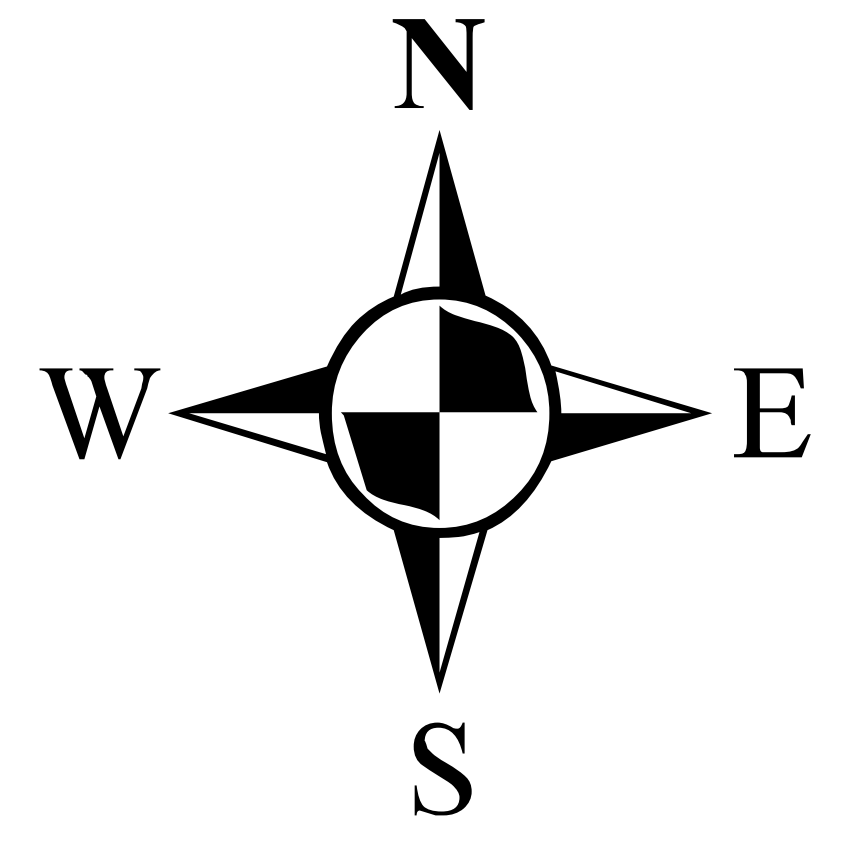





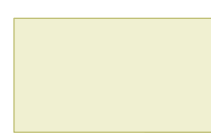
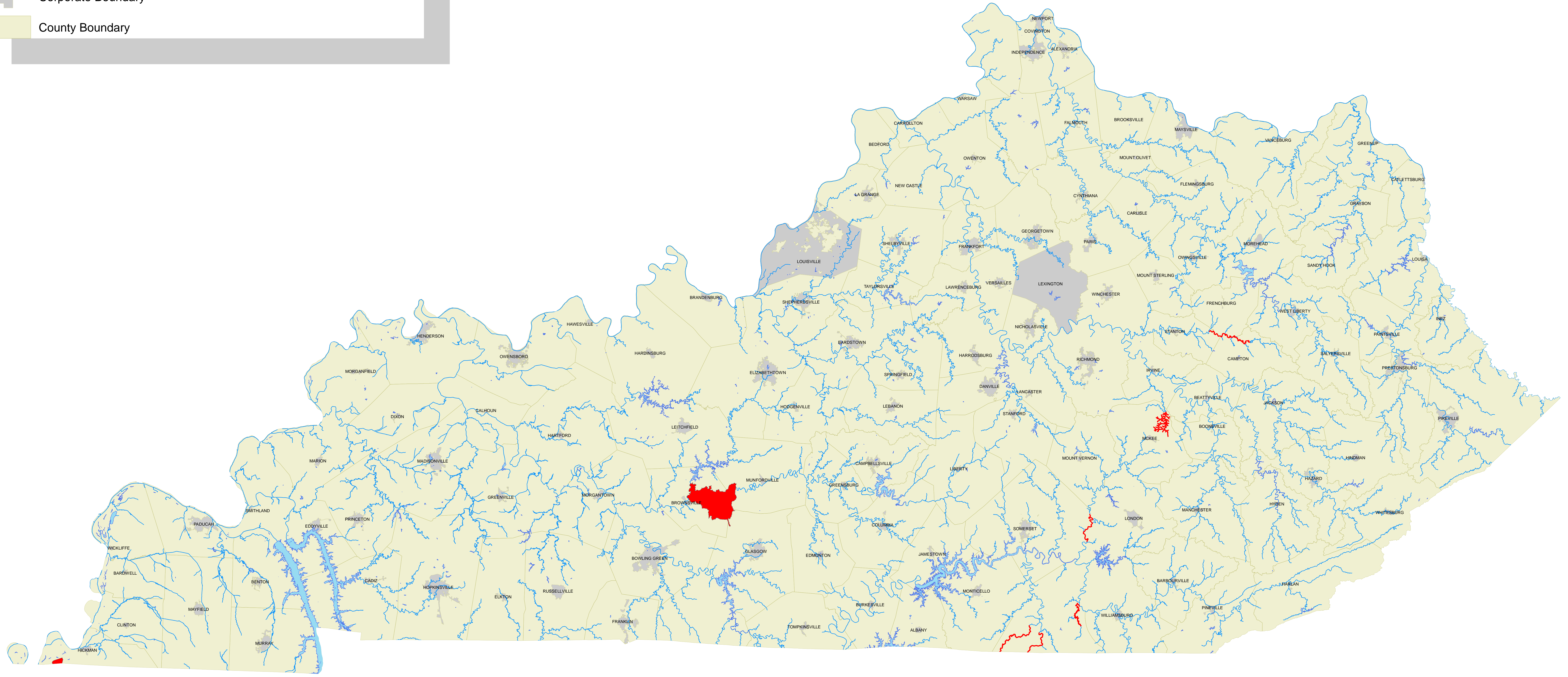


Outstanding National Resource Waters (401 KAR 10:030)



-  Outstanding National Resource Waters
-  Outstanding National Resource Waterbodies
-  24K NHD Waterbodies (Lakes, swamps, etc.)
-  Major Rivers and Streams (3rd Order and Greater)
-  Corporate Boundary
-  County Boundary



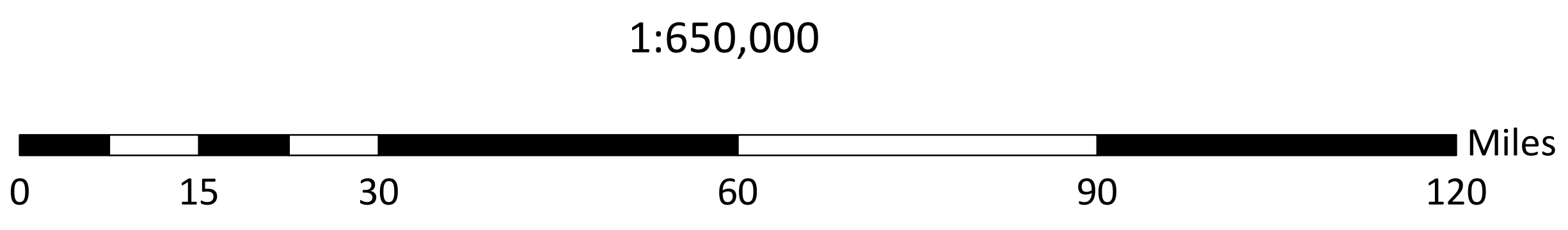
Data Sources:

<p>GIS Data: DOW 030 Exceptional Use Waters DOW 030 Exceptional Use Waters (Lakes) Named Lakes 6 Digit Hydrologic Units (Basin) County Boundaries Corporate (City) Boundaries 10K NHD Plus Stream Order</p>	<p>Agency: Kentucky Division of Water, 2008 Kentucky Division of Water, 2008 Kentucky Department of Fish and Wildlife, 2008 US Geological Survey, 1997 Kentucky Division of Geographic Information, 2005 Kentucky Division of Geographic Information, 2005-2016 US Geological Survey and US Environmental Protection Agency</p>	<p>Law/Regulation of Origin: Kentucky Administrative Regulations (KAR) 401.10.030, 2008 Kentucky Administrative Regulations (KAR) 401.10.030, 2008 Secretary of State - Land Records Office</p>
---	---	---



Energy and Environment Cabinet
 Division of Water
 300 Sower Blvd, 3rd Floor
 Frankfort, KY 40601
 (502)564-3410
<http://water.ky.gov>

Prepared by:
 James Searle, Kentucky Division of Water
 7-21-2009, revised 6-21-2016



This data is distributed by the Commonwealth of Kentucky,
 Division of Geographic Information (DGI), located in Frankfort, KY.
 This data is available at <http://kygsnet.ky.gov>.

