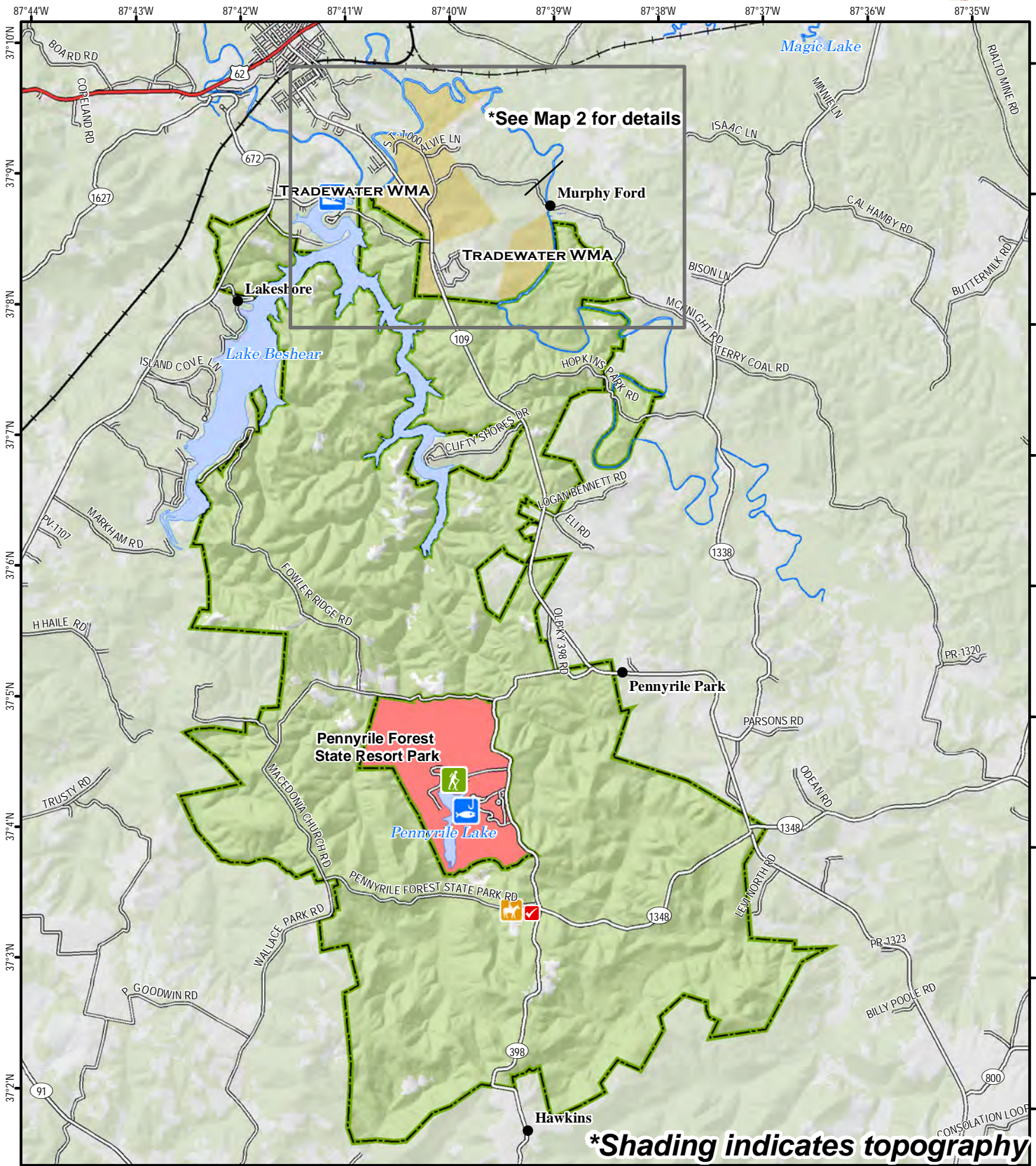




Pennyrile State Forest (Map 1) & Tradewater Wildlife Management Area



A map legend and additional information are provided on PDF pages that accompany this map.

Publication Date: 11/18/2016
 Land Classification from National Land Cover Database 2011



0 0.5 1 1.5 2 Mile

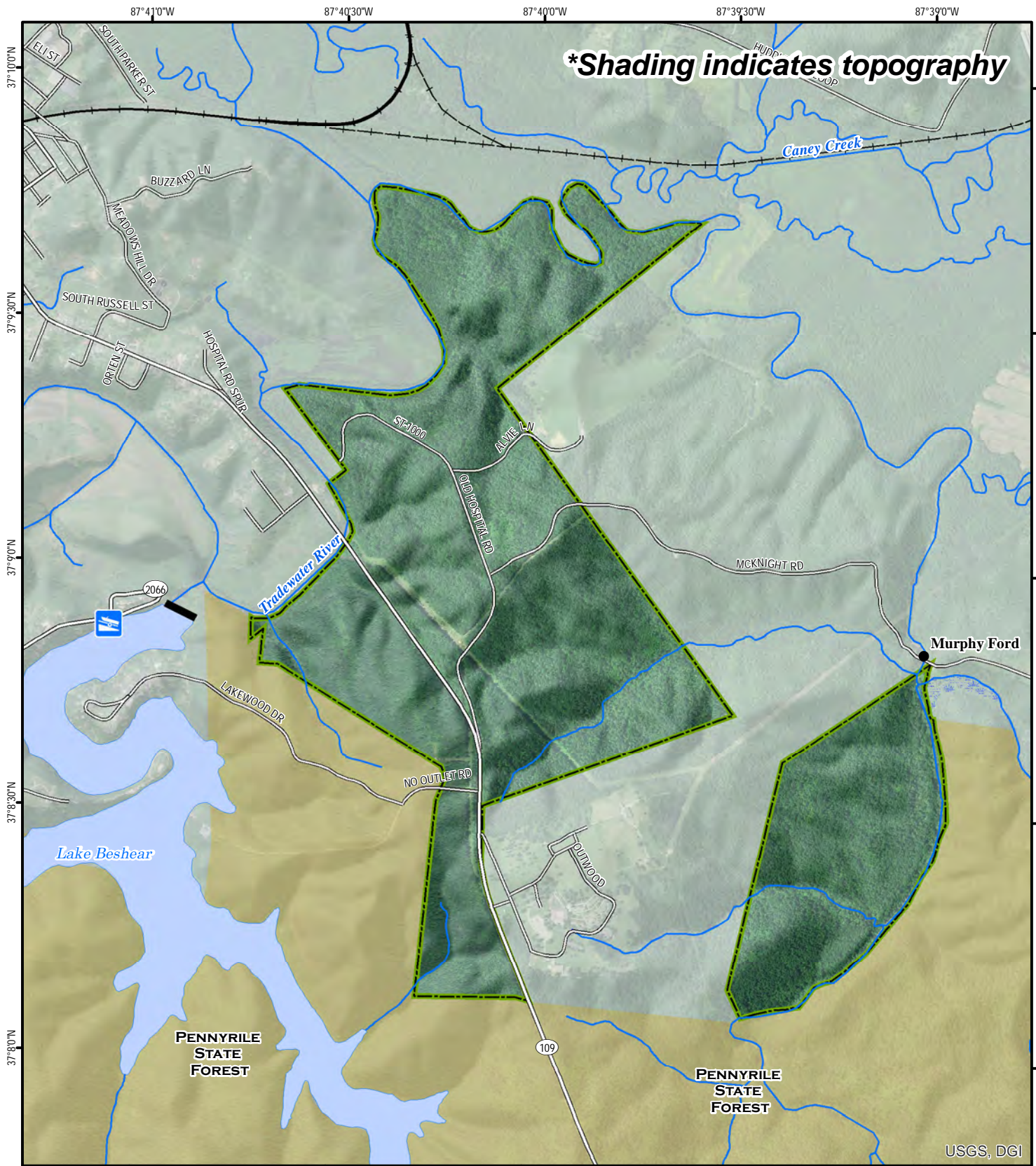
Scale 1:75,000

Note to Map Users

Map prepared by Kentucky Department of Fish & Wildlife Resources (KDFWR). Although KDFWR strives for accuracy, data used to create this map are from a variety of sources and dates; as such, KDFWR makes no representations regarding the accuracy or fitness for use of the information furnished herein.

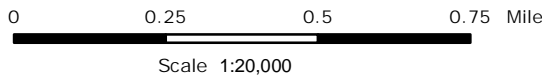


Tradewater Wildlife Management Area Map 2



A map legend and additional information are provided on PDF pages that accompany this map.

Publication Date: 11/18/2016
Imagery from Farm Service Agency 2016



Note to Map Users

Map prepared by Kentucky Department of Fish & Wildlife Resources (KDFWR). Although KDFWR strives for accuracy, data used to create this map are from a variety of sources and dates; as such, KDFWR makes no representations regarding the accuracy or fitness for use of the information furnished herein.

USGS, DGI

Tradewater WMA and Pennyrile State Forest Information

Public Hunting Area Location



Regional Locator



Tradewater WMA Overview

Location & Size: Christian & Hopkins counties, 729 acres.

Contact: (270) 753-6913

Elevation: minimum 373 feet, maximum 641 feet.

Entrance GPS coordinates: Latitude N 37.14695, Longitude W -87.67137

Area Habitat: mostly forest: open land 0%, forest 98%, wetland 3%, open water 0%.

Tradewater WMA Directions & Description:

Shares boundary with Pennyrile State Forest. McKnight RD connects both properties, allows access from KY 1338.

Access south of Dawson Springs on KY 109.

From Madisonville, take US 41 south, I-69 west then KY 109 south to WMA.

From Hopkinsville, take US 68 west to KY 109 north. Additional entry points on both sides of road ½ mile south of Tradewater River bridge.

Steep, hilly terrain, some steep bluffs, almost completely forested

Quality Deer Management special regulations.

Hiking-birding trail with unique rock overhangs, bluffs and small caves.

Owned by Kentucky Department of Fish and Wildlife Resources.

Pennyrile State Forest Overview

Location & Size: Christian & Caldwell counties, 14,379 acres.

Contact: (270) 753-6913

Elevation: minimum 390 feet, maximum 780 feet

Entrance GPS coordinates: Latitude N 37.05784, Longitude W -87.65368

Area Habitat: mostly forest: open land 0%, forest 97%, wetland 1%, open water 2%.

Pennyrile SF Directions & Description:

8 miles south of Dawson Springs.

From Princeton, take US 62 east to KY 109, then south to WMA.

From Hopkinsville, take US 41 north to KY 1348 west.

Many trails, roads (some paved) within area. Hilly terrain, primarily timbered.

Quality Deer Management: special regulations.

Hiking trail. Food, lodging, camping and recreational facilities at Pennyrile Forest State Resort Park. Fishing in Beshear and Pennyrile lakes.

Owned by Kentucky Division of Forestry.

Online Resources





Public Hunting Area users must abide by the Kentucky hunting, trapping, and fishing regulations. It is incumbent on persons using Public Hunting Areas to become familiar with these regulations. Kentucky Department of Fish & Wildlife Resources provides these regulations on our Web site at fw.ky.gov or by calling 1-800-858-1549.

Wildlife Management Area Map Notes & Legend

NOTE TO MAP USERS:

For most WMA maps the landscape is depicted using a combination of elevation contours, hillshading and a green tint indicating woodland areas that is derived from satellite imagery. On WMAs that are relatively small or have a history of surface mining aerial photography is used.

WMA Map Legend

	WMA Office		WMA Boundary		Populated Place
	Information Kiosk		Aerial photograph		Kentucky Boundary
	Check station		Other Public Hunting Areas		Interstate Highway
	Mobility-impaired Hunting Blind		Area Off Limits		Kentucky Parkway
	Trailhead		No Hunting		U.S. Highway
	Horseback Trailhead		Seasonally Restricted Access		State Highway
	Parking Lot		Mobility Impaired Hunting Area		Local Road
	Picnic Area		Primitive Hunting Only		Forest Service Road
	Restrooms		Foot Traffic Only		Active Railroad
	Wildlife Viewing Site		Open Water		Abandoned Railroad
	Interpretive Site		Wetland		Federal Recreation Trail
	Retriever Training Site		Woodland		WMA Road
	Gate				WMA Foot Trail
	Campground				WMA Horse Trail
	Cemetery				Gas Pipeline
	Corps of Engineers Office				Powerline
	Waterfowl Blind				Rivers and Streams
	Shooting Range				Dam
	Established Bank Access				Trout Waters
	Fishing Pier				Elevation Contour
	Carrydown Launch				
	Small Boat Ramp				
	Large Boat Ramp				
	State Park Office				