

2026



KENTUCKY'S



GROWING GOLD

Volume: 67
No. 1 - Winter





TABLE CONTENT

- Welcome Message
- About Kentucky Division
of Forestry
- Our Offices
- Delivered Log Prices
- Classifieds
- Kentucky Master Logger
Trainings
- Calendar of Events
- Messages

WELCOME MESSAGE



The Kentucky Growing Gold has been around since the 1960's and has served as a way to advertise timber marked by the Kentucky Division of Forestry to the forest industry. Even though a few things have changed over the years, it has stayed true to its service to the Commonwealth by providing useful information to forest landowners and forest industry.

Stephen Rogers

Program Specialist

Forest Resource, Utilization and Marketing

Stephena.rogers@ky.gov

The Forest Resource Utilization and Marketing (FRU) program supports Kentucky's forest product economy with market development, process improvement and adoption of new technologies. Through the FRU program, the division strives to expand forest resources and wood industries. Some of the services provided to the timber industry through FRU include the following:

- Monitoring changes in the forest
- Matching wood producers and wood users
- Conducting industry surveys
- Compiling and reporting data on quantities and species of wood
- Compiling the Primary Wood Industries of Kentucky directory
- Reporting timber products output
- Monitoring trends in timber harvesting
- Publishing a Bi-annual newsletter called "Growing Gold"
- Offering technical assistance to mills and loggers to increase efficiency
- Resource assessments for economic development opportunities



ABOUT KENTUCKY DIVISION OF FORESTRY

The Kentucky Division of Forestry celebrated its 100th anniversary in 2012. Initially established as the Board of Forestry by the Kentucky General Assembly in 1912, the agency was renamed the Kentucky Division of Forestry following the Reorganization Act of 1936. Today, the division employs 125 full-time staff, with most working from offices across the state, including six field offices, two tree nurseries, and managing 10 state forests with a combined land mass of nearly 50,000 acres. Brandon Howard, the 16th director of the division, currently serves as the state forester for Kentucky.

The mission of the Kentucky Division of Forestry (KDF) is "to protect, conserve and enhance the forest resources of the Commonwealth through a public informed of the environmental, social and economic importance of these resources." As a means of meeting this mission, the division offers a variety of programs and services ranging from landowner assistance and master logger training to forest health protection and wildland fire management. The division is also involved in the operation of tree seedling nurseries, urban and community forestry assistance, forest resource utilization, forest inventory and analysis and forestry education.

TEAM 
KENTUCKY®

ENERGY AND
ENVIRONMENT CABINET
DIVISION OF FORESTRY

OUR OFFICES



Division of Forestry Field Office Locations



Field Office Contact Information

Campbellsville	Frankfort	Morehead	Hazard	Madisonville	Pineville
Seth Dykes	Strider Deaver	James MacDonald	Jason Hunt	Stephen Hammond	Deanico Carmical
120 Gaines Drive	105 Corporate Dr, Ste 1	255 Rodburn Hollow	154 Grand Vue Plaza	625 Hospital Drive	12008 US Hwy 25E
Campbellsville, KY 42718	Frankfort, KY 40602	Morehead, KY 40351	Hazard, KY 41701	Madisonville, KY 42431	Pineville, KY 40977
270-465-5071	502-573-1085	606-783-8625	606-435-6073	270-824-7527	606-337-3939

© 2006 The Authors
Journal compilation © 2006 Blackwell Publishing Ltd

DELIVERED LOG PRICES BY REGIONS

Region 3

Species	High MBF'	Low MBF'	1/4 High MBF'	1/4 Low MBF'	Veneer Low MBF'	Veneer High MBF'	Stave High MBF'	Stave Low MBF'	Qtr-Sawn High MBF'	Qtr-Sawn Low MBF'	Tie-HWD High MBF'	Tie-HWD Low MBF'	Tie Ton'	Pallet MBF'	Pallet Ton'	Mat MBF'	Fencing MBF'	Handle MBF'	HDWPulp Ton'	PINEPulp'	Per Ton'	Chip Log MBF'	Chip Log Ton'	Peelers MBF'	Peelers Ton'
Red Oak			638	170							425	150			400	300	400								
White Oak	2600	200	1400	160	3100	4050	3200	1000	2733	1800	450	150		500	250	525									
Chestnut Oak	2400	200	1400	160					2667	1600	425	150		500	250	525									
Hard Maple			700	170							400	150				300									
Soft Maple			413	170							400	150				250									
Ash			425	170							400	217				250									
Black Cherry			375	170							400	250													
Black Walnut	3333	500	2000	180	4500	7000																			
Hickory	700	200	400	190							400	150				250									
Yellow Poplar			675	170								150		100	400		363								78
Basswood			250	125																					
Beech			200	100										100		250									
Sycamore			200	100										100		250									
Gum			200	100										100		250									
Misc. Hardwoods			217	143							425	150		100		275		26							
Pine			180	180																					

Region 4

Species	High MBF'	Low MBF'	1/4 High MBF'	1/4 Low MBF'	Veneer Low MBF'	Veneer High MBF'	Stave High MBF'	Stave Low MBF'	Qtr-Sawn High MBF'	Qtr-Sawn Low MBF'	Tie-HWD High MBF'	Tie-HWD Low MBF'	Tie Ton'	Pallet MBF'	Pallet Ton'	Mat MBF'	Fencing MBF'	Handle MBF'	HDWPulp Ton'	PINEPulp'	Per Ton'	Chip Log MBF'	Chip Log Ton'	Peelers MBF'	Peelers Ton'
Red Oak	700	238									450	217		125		250	517								
Scarlet Oak	300	300									400			100			650								
White Oak	1975	275			2825	6000	3133	933	3100	1800	533	233		125		250	583								
Chestnut Oak	1500	250			2400				3000	1600	483	200		125		250	625								
Hard Maple	875	250									450	200		125		250									
Soft Maple	650	200									450	200		125		250									
Ash	433	200									433	200		125		250									
Black Cherry	400	200									400			125											
Black Walnut	3725	400			3800	8000																			
Hickory	600	213									450			125		250									
Yellow Poplar	713	200									500	250		117			467								
Basswood	250	200																							
Beech	200	200												100		250									
Sycamore	200	200												100		250									
Gum	200	200												100		250									

Stephen Rogers

THIS SURVEY REPRESENTS APPROXIMATE LOG PRICING RECEIVED AT THE MILL BY THE LOGGER OR INDIVIDUAL SELLING TO THE MILL. THIS DOES NOT REPRESENT, IMPLY, OR ASSUME PRICING FOR STANDING TIMBER ON YOUR FARM OR WOODLAND.

LANDOWNERS AND FARMERS PLEASE NOTE:

IN ORDER TO MAKE FULL USE OF THIS LOG PRICING DATA: YOU SHOULD HAVE A CRUISING REPORT PERFORMED BY A QUALIFIED FORESTER SHOWING SPECIES, GRADE, AND FOOTAGE OF THE STANDING TIMBER ON YOUR PROPERTY. ADDITIONALLY, YOU MUST ALSO UNDERSTAND THE RELATED EXPENSES IN HARVESTING AND TRANSPORTING TIMBER FROM YOUR PROPERTY TO THE PURCHASING MILL. FARMERS AND LANDOWNERS WILL RECEIVE STUMPAGE PRICES LESS THAN THOSE LISTED IN THIS REPORT BY AS MUCH AS 50% OR MORE IN SOME INSTANCES. COSTS OF LOGGING VARY GREATLY DUE TO ACCESS, PROXIMITY OF THE TIMBER TO A MAIN ROAD, TERRAIN, DISTANCE TO THE PURCHASING MILL, PREVAILING CONDITIONS, SPECIES COMPOSITION, TIMBER QUALITY, TIMBER SIZE, FOOTAGE PER ACRE, MARKET SPECIES DEMAND, AND COST ASSOCIATED WITH THE USE OF APPROPRIATE BEST MANAGEMENT PRACTICES (BMPs).

NOTE:

ALL VALUES ARE EXPRESSED FOR UNSAWN LOGS DELIVERED TO THE MILL IN DOLLARS PER 1000 BOARD FEET (MBF) AS ESTIMATED BY THE DOYLE LOG RULE UNLESS OTHERWISE NOTED.

Classifieds

WANTED

SAWN FOREST PRODUCTS

Seeking a continuous source of hardwood crossties. Contact Brandon Rothschild, Global Partners, Inc., 410-626-1502 or 410-703-8301

Looking for a steady supply of 4/4 white sappy hickory lumber, (Select and Better). Can use green or kiln dried depending on distance of sourcing. Also buying 1 inch X 1 inch X 19 inches, hickory square blanks with minimal defect and with white sap color. Contact: Marvin Gingerich, 2175 Bradsfordville Road, Campbellsville, KY42718, Phone: 270-465-0505 or Eli Royal, 503-828-9212.

We are year-round buyers of 4/4 Green #1 C/Btr RO, 5/4 #1C/Btr RO and 4/4 #1C WO. Contact: Rick Goodin, Lebanon Oak Flooring Co., 215 Taylor Ave., Lebanon, KY. tel: 270-692-2128, fax: 270-692-2128.

Wanted: suppliers of oak and mixed hardwood crossties and switch ties. all sizes of crossties, 7"x 9"x 8'6", 7"x 8"x 8'6" and 6"x 8"x 8'6". Switch ties of all lengths needed. Contact: Gene Willcutt at 812-789-5331, e-mail: gwillcutt@stella-jones.com or Chris Womack at 812-243-0656, e-mail: cwomack@stella-jones.com. Stella-Jones Corp., 3818 S. Co. Rd. 50 E., Winslow, IN.

Looking for suppliers of crossties, switch ties, and gum panels. sweetgum ties and oak timbers. Yards at Beaver Dam, Paducah, Owensboro, and Guthrie, KY. Contact: Ted Owens, Koppers, Inc., P.O. Box 8, Guthrie, KY 42234, tel: 270-483-2458, email: owensht@koppers.com.

FOREST PRODUCTS - STUMPAGE, LOGS, AND BOLTS

Land of Indiana Inc. ****BUYING**** Walnut Veneer/Saw Logs and White Oak Veneer
Serving Indiana, Illinois, Kentucky and Ohio. Syllas Morin 812-865-6503 Larry Morin 812-797-1982

Interested in purchasing industrial grade tie logs, (elm, hackberry, sycamore, gum, beech, cherry, etc....); Contact: David Jones, 502-319-3067, Franklin County

Interested in buying ash and persimmon logs. Ash log lengths, 10 feet and 13 feet. Persimmon logs in 8, 10, and 12 feet in length with a minimum diameter of 10 inches. Contact: Mark Childress 1-800-635-3098

Roundtree Corporation is a year-round purchaser of walnut and white oak veneer logs and sawlogs. The owners have been buying walnut logs for 45 years, non-stop. Field inspection is available for better parcels. Contact: John Willmott, 859-582-1753. Log yard: 1552 Winston Rd., Irvine, KY 40336; Hours: 8:00 am – 3:00 pm, Monday – Thursday.

Buying red cedar pine and **Now Cottonwood logs**. Call: Greg Gambrel, American Wood Fibers, 390 Warehouse Rd., Lebanon, KY 40033. Tel: 800-662-5459 or 276-620-2458. Inquire about new buying price.

The Freeman Corporation operates a veneer mill in Winchester, KY. Our salaried log buyers travel year-round to purchase veneer logs and standing timber. We pay competitive prices for quality ash, walnut, cherry, red oak, and white oak logs. For additional information, contact: The Freeman Corp., PO Box 96, Winchester, KY 40392, tel: 859-744-4311.

Your pine material is worth more than you think!! We want fresh yellow pine that will make good fence posts or poles and are paying top dollar for it. There are several different ways you can make more money with your quality pine material so call Steve and see what works best for both of us. Olympia Lumber and Post, 539 Sour Springs Rd., Olympia, KY 40358. Tel: 606-674-6296, 513-309-2763, email denise@olympialumberandpost.com, web: www.olympialumberandpost.com

Attention loggers: We need your low-grade logs. We are the largest user of low-grade logs in Central KY. Two locations to serve you better. Cub Run Hardwoods in Cub Run, KY and Quality Pallet Co. in Greensburg, KY. We buy year round. Pallet grade and tie logs. Paying competitive prices. We can arrange freight to pick up at your yard. Call for specs. Cub Run Hardwoods, Wilmer Yoder tel: 270-524-7811, Quality Pallet Co., Paul Peachey, tel: 270-932-2887.

J & T Lumber, wanting to buy tie logs – top prices paid. Contact: Tim Crawford, tel: 606-215-0612.

M. Bohlke Veneer is currently pursuing high quality white oak and walnut veneer logs, and/or standing timber. M. Bohlke Veneer has been in the timber business for over forty years. M. Bohlke Veneer has very competitive prices and prompt payment. For more information contact: Chuck Reece, cell: 513-368-8845, home: 513-896-4037. M. Bohlke Veneer Corp., 8375 N. Gilmore Rd., Fairfield, OH 45014. Log office: 513-682-1462.

SERVICES AVAILABLE

Arnzen Forestry Services specialize in selective timber marking and sales, other services include appraisals, timber trespass, management plans and timber stand improvement. Arnzen Forestry Services, Tim Arnzen, KACF, 627 Myers Road, Campbellsville, KY 42718. tel: 270-465-5672, cell: 270-849-6467, email: tim@arnzenforestryservices.com, web: www.arnzenforestryservices.com

Cox Forestry Consulting, LLC – providing the following services: management, inventory, marking, marketing, sale administration, timber appraisals, property boundary marking / survey and mapping, timber stand improvement, and tree plantings. Contact David Cox coxforestryconsulting@gmail.com or 502-802-6021.

Consulting Forestry Services - Central Kentucky Forest Management offers timber sale, management plan, and timber appraisal services. Contact: Chris Will, Central Kentucky Forest Management, Inc., 301 Stanford Ave., Danville, KY 40422. Tel: 859-238-2212, 859-516-1415, email: chris@ckfm.net, web: www.ckfm.net.

Custom Sawing / Portable Sawmill – sawing services available in north central and northeastern Kentucky; Contact: Russell Iery, Tel: 606-796-6966, or email russellkiery@windstream.net

Custom Sawing / Portable Sawmill – sawing services available in Franklin and surrounding counties; Contact David Jones, 502-319-3067

JJ's Repair & Hydraulics
Hydraulic cylinder fabrication and repair, Machining, welding, fabrication, and custom made hydraulic hoses. Field or Shop.
270-963-8595 email: jj@jjsrepair.com

D & M Forestry - specializing in timber cruising, grading, appraising, marketing and logging engineering services. Contact: Dick Brantigan, tel: 888-503-0004 or mobile, Tel: 859-771-0453, email: dick@dmforest.com, web: www.dmforest.com.

Skees Forest Service – over 30 years of experience. Private forestry consultant specializing in: timber harvest environment compliance, forest management, timber marking & marketing, inventory appraising & advertising. Contact: Gery Skees, 1154 Ford Hwy., Elizabethtown, KY 42701. Tel: 270-737-2476, cell: 270-234-3301, email: gskees@windstream.net.

Sourwood Forestry Consulting – Forest management planning and implementation (FSI), timber sales and appraisals, custom inventories, mapping, data management design and development. Contact Scott Shouse at (859) 319-1611; scott@sourwoodforestry.com, www.sourwoodforestry.com.

Timberland Management - Dynamic Forest Management specializes in timber marking and sales, timber inventory and appraisals, timber trespass cases, timber stand improvement, property boundary marking and custom mapping. Contact: Luke Biscan, 47 Frontage Rd, Glasgow, KY 42141. Tel: 270-404-4288, Email: biscanluke@aol.com

Wild Indigo Forestry - offers timber marking and sales, appraisals, inventory, trespass, tree planting, forest management plans, and NRCS TSP forest management plans. Contact Katie Wilding at 270-339-7450; email: wildindigoforestry@gmail.com website: wildindigoforestry.wordpress.com

FOR SALE

Used parts shipped daily for log skidders, crawlers, loader backhoes, excavators, wheel loaders, and skid steers. Parts for: Allis Chalmers, Athey, Bantam/Koehring, Bobcat, Case, Clark, Daewoo, Dresser, Drott, Fiat Allis, Franklin, Hitachi, Hough, Hyundai, International, John Deere, Kobelco, Komatsu, Leihberr, Linkbelt, Michigan, Mitsubishi, New Holland, New Process, Pettibone, Samsung, Timbco, Timberjack, Treefarmer, Vme, Volvo. We have many reconditioned engines and transmissions that are dyno-tested. Rebuilt winches, final drives and used tires. If we do not have a part – we can locate it for you on one of our 3 nationwide parts locators. Contact: Schaefer Enterprises of Wolf Lake, Inc., 4535 State Route 3 North, Wolf Lake, IL 62998. Ask for Andy, Brad, Jill, Joe, Kevin, or Matt if buying. Ask for Jerry or Tom if selling. Call: 618-833-5498 or 800-626-6046, fax: 618-833-7765, email: parts@sewlparts.com, website: www.sewlparts.com.

B-Y's Sawmill-
4378 Barney School Road
Campbellsville, KY 42718
Access Mats Available:
8X12 \$180
8X14 \$280
8X16 \$310
Call and ask for Sam
270-469-1126 or 270-469-1229
Fax 270-789-3495

REAL AMERICAN HARDWOOD PROMOTION

What is the REAL AMERICAN HARDWOOD promotion? The REAL AMERICAN HARDWOOD promotion is a promotional campaign by a coalition of the hardwood-manufacturing sector and hardwood trade associations in using natural hardwood products. Concern of a declining market share by using alternative hardwood appearance products, along with unstable hardwood trade agreements, has prompted a call to action by utilizing a comprehensive campaign marketing approach.

For additional information about this promotion check out the following link:
www.realamericanhardwood.org



ANNOUNCEMENT

At last! A monthly buy-sell publication that reaches almost every sawmill and pallet mill in the USA. For your sawmill or pallet mill to be put on the mailing list, simply call 800-992-3432, and you will receive each month, at no charge, your copy of American Lumber & Pallet. Website:
www.amlumber.com.

The National Wooden Pallet and Container Association (NWPCA) is an international trade association of unit load professionals who manufacture, recycle and distribute pallets and other unit load bases, containers and reels. NWPCA is dedicated to the success of its members by helping them create environmentally responsible, cost-effective solutions to meet their customers' changing materials handling needs,

"[Pallets Move the World...With Your Help](#)", is a 10-minute training video on proper pallet handling techniques. It is designed for use by lift truck drivers, warehouse personnel and material handling professionals who want to increase their awareness of how proper pallet handling can save time and money by reducing damage. Get a copy now to improve your bottom line by improving your materials handling practices. Contact NWPCA directly at 703-527-7670 x 209. There is a charge for the video of \$29.95 (\$19.95 for NWPCA members). You may fax your order to 703-527-7717 or e-mail your request to palletmbr@aol.com. Please include your name, title, company, address, phone and fax numbers and credit card information.

Pallet and container solutions available online. The NWPCA Website (<http://www.nwpc.com>) features a continuously updated roster of pallet, container and reel providers, including contact information, a listing of the specific products and services they offer, and hotlinks to individual company websites. Pallet users can use the site to locate suppliers in their area that offer the products they need, including new and repaired pallets and containers, and services such as retrieval and recovery systems or disposal solutions. The NWPCA Website also contains information about pallet quality assurance programs; pallet design and construction standards; publications and services available from NWPCA and its member companies; and a calendar of events. An "industry watch" section features articles covering news and trends affecting the industry.

Wood Industries of Kentucky

Directory, searchable directory can be found at the UK forestry website: <https://kentuckywoodindustry.ca.uky.edu/>

Kentucky Delivered Log Price

Report within this publication can also be found at:
www.eec.ky.gov/Natural-Resources/Forestry/resource-utilization-and-marketing

Harvest gold - charity! Help the kids!!!

Timberland owners who have their timber cruised and marked for harvest may at their option - donate up to 10% of gross value or 10% of their trees, as IRS rules, tax deductible!! [Please donate to:](#)
Kentucky Forest Industries Association's - "Log-a-Load for Kids" which benefits children's hospitals. 100% of contributions will go to the University of Kentucky Children's Hospital. You may call direct to donate now!

Kentucky Forest Industries Association, 106 Progress Drive, Frankfort, KY 40601 or 502-695-397

Kentucky Forestry Industry Survey

We Want Your Input!

Share your experience to help improve:



Forest Management



Market Access



Extension Services



For loggers, mill operators, and forest product professionals

Start Survey Here:



Scan the QR Code or visit:

<https://forms.office.com/g/Uca7nWJ11x9>



Takes 5–10 Minutes



Kentucky Master Logger Program is required by law - the Kentucky Forest Conservation Act requires that at least one graduate of the KY Master Logger (KML) Program is on site and in charge of each commercial logging operation (excluding horse logging). The law also requires the use of appropriate bmps on all commercial logging operations. The KML Program is held 9:00am to 5:00pm local time. To successfully complete the KML program you must attend and participate in all three days. Each program is limited to 50 participants.

KML 3-Day Classes 2026

Dates - 2026	County	City	Location
Feb 3, 4, 5	Breckinridge	Hardinsburg	UK Extension Office
March 10, 11, 12	Fleming	Flemingsburg	UK Extension Office
April 14, 15, 16	Christian	Hopkinsville	UK Extension Office
May 19, 20, 21	Floyd	Prestonsburg	UK Extension Office
July 21,22,23	Owen	Owenton	UK Extension Office
September 22,23,24	Metcalfe	Edmonton	UK Extension Office
October 20,21,22	Marshall	Benton	UK Extension Office
November 17,18,19	Whitley	Williamsburg	UK Extension Office

2026 Kentucky Master Logger Programs

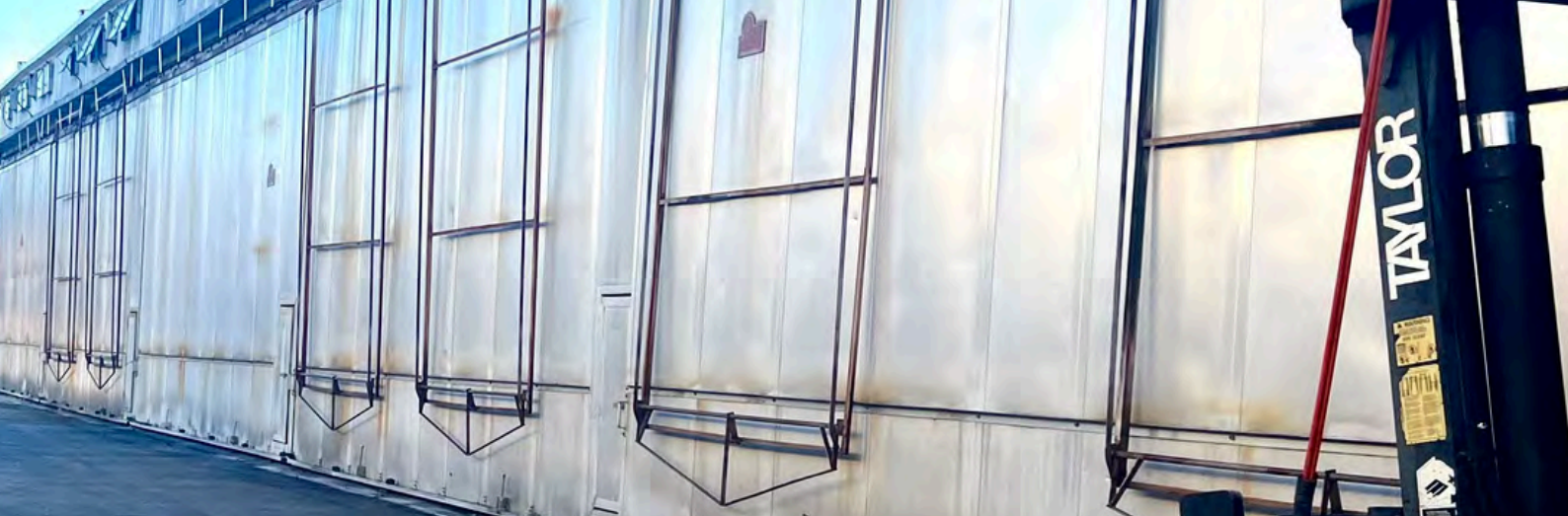
Continuing Education Schedule

- February 18: **Principles of Forestry** -Munfordville (Hart County)
- April 22: **BMP Refresher** - Pineville (Bell County)
- April 28: **Sustainable Forestry** -Russellville (Logan County)
- May 6: **Basic Timber Cruising** -Salyersville (Magoffin County)
- June 3: **BMP Refresher** - Pennyryle SP (Christian County)
- June 17: **Directional Felling** - Somerset (Pulaski County)
- August 26: **Principles of Forestry** -Campbellsville (Taylor County)
- October 14: **Sustainable Forestry** -Princeton (Caldwell County)
- November 12: **Chainsaw Safety** -Cynthiana (Harrison County)
- December 2: **Directional Felling** - Camp McKee (Montgomery County)

Other CEU Opportunities:

- February 26: **Woods & Wildlife for Your Wallet** - Greenup
(Greenup County High School)3 CE Credits - INFO: (606) 473-3228
- March 6: **OAK STRONG**** - Morehead (Rowan County) 6 CE Credits
Harold White Lumber & Millworks Company
- March 20: **OAK STRONG**** - London (Laurel County) 6 CE Credits
London Community Center

** To register for the **Oak Strong: Celebrating Loggers and Shaping the Future of White Oak** class call (502) 695-3979 or register online at www.kfia.org



2026 Calendar of Events

- | | | |
|-------------|---|--|
| Feb 17 | Kentucky Forest Health Conference | Longship Club, Kroger Stadium Lexington, KY
https://forestry.mgcafe.uky.edu/fhc-conference |
| Mar 4-8 | Appalachian Hardwood Manufacturers, Inc. Annual Meeting | Naples Grande Resort, Naples, FL
Information / registration: email info@appalachianhardwood.org or AHMI website (Appalachian Hardwood Manufacturers, Inc.). (AHMI) |
| Mar 16-19 | Railway Tie Association 2026 Tie Grading Seminar | Hampton Inn (Union City), TN —
classroom & hands-on sessions Information: email ties@rta.org or RTA Calendar (Railway Tie Association). (RAILWAY TIE ASSOCIATION) |
| Mar 24-26 | Kentucky Woodland Owners Association, 2026 Annual Meeting | Jenny Wiley State Resort Park, KY Meeting registration & info: www.kwoa.net (Kentucky Woodland Owners Association). (KWOA) |
| Mar 25-27 | National Wooden Pallet and Container Association Annual Leadership Conference | Marriott Harbor Beach Resort (Fort Lauderdale), FL Contact: NWPCA at 703-519-6104 or www.palletcentral.com ; official conference dates confirmed via event listing. (Showsbee) |
| Mar 17-19 | International Wood Products Association 70th World of Wood Convention | The Broadmoor, Colorado Springs, CO — IWPA annual convention Contact: IWPA at 703-820-6696 or info@iwpawood.org ; details from Woodworking Network article. (Woodworking Network) |
| Apr 7-9 | Kentucky Forest Industries Association Annual Meeting | The Hilton Lexington/Downtown, Lexington, KY Contact: Michele at michele@kfia.org or 502-695-3979 |
| Apr 14-15 | Wood Bioenergy Conference & Expo | Omni Hotel at Centennial Park, Atlanta, GA
Register / info: Wood Bioenergy Conference & Expo official site. (bioenergyshow.com) |
| Apr 29 - 30 | Ohio Valley Lumber Dryers Association | New Berlin/Millersburg Ohio |
| Aug 25-28 | International Woodworking Fair (IWF) 2026 | Georgia World Congress Center, Atlanta, GA
Additional info: www.iwfatlanta.com or info@iwfatlanta.com ; dates confirmed by industry calendar. (woodindustry.org) |
| Sept 16-18 | National Hardwood Lumber Association 2026 Annual Convention & Exhibit Showcase | Huntington Convention Center, Cleveland, OH Contact: NHLA at 901-377-1818 or info@nhla.com ; dates confirmed via NHLA website. (NHLA) |
| Oct 12-14 | Mass Timber Conference | Campbell House 1375 S. Broadway, Lexington, KY 40504 Contact: www.KYMassTimber.com |
| Oct 1-4 | Associated Cooperaage Industries of America 2026 Annual Convention | Eton Mountain Lodge & Spa/Hotel Terra Jackson Hole Teton Village, WY Contact: ACIA office 502-261-2242, www.acia.net , or acia@att.net |
| Dec 2-5 | Kentucky Farm Bureau 107th Annual Meeting | Galt House, Louisville, KY
Contact: Kentucky Farm Bureau Headquarters: 502-495-5000 |

MESSAGES

- If you are a new industry to Kentucky and would like to be added to our data of forest industry you can contact me.
- If you are a log buyer in Kentucky and are willing to share log prices, I am always looking to expand my list of contributors.
- Did you enjoyed Kentucky Growing Gold and are not yet on our mailing list, send me a message.
- Would like to submit an advertisement, please get in touch.

Please email me regarding any of the above points.

Stephen Rogers

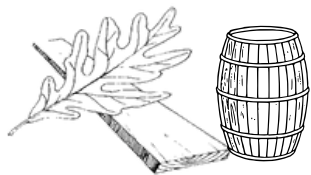
Program Specialist

Forest Resource, Utilization and Marketing

Stephena.rogers@ky.gov



KENTUCKY'S



GROWING GOLD

TEAM
KENTUCKY

ENERGY AND
ENVIRONMENT CABINET
DIVISION OF FORESTRY



300 Sower Blvd
Frankfort, KY 40601
502-564-4496