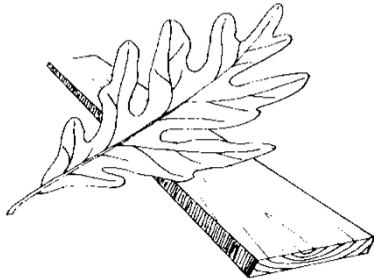


# KENTUCKY'S



## GROWING GOLD

A Publication of:  
Kentucky Division of Forestry  
Frankfort, KY 40601

### A SERVICE TO KENTUCKY'S FOREST PRODUCTS INDUSTRY AND TIMBERLAND OWNERS

VOL. LX, NO. 1

UPDATED: 1-25-2021  
EDITOR: Stewart West

WINTER 2021

The following marked timber for sale is a listing of timber marked by the Kentucky Division of Forestry. The list was current as of date of submission to the printers. If you want further information on marked timber, please refer to the "County Guide to Branch Foresters' Offices" inside the back cover and contact the appropriate forester.

### KDF MARKED TIMBER ADVERTISED FOR SALE

<u>LOCATION</u>	<u>SPECIES AND VOLUME (BF)</u>				<u>CONTACT</u>
WEST SIDE OF FURNACE BRANCH RD. (KY 975)	Y. POP/CUCUMBER	151,782	HARD MAPLE	16,989	DAVE COHN, MGR. ALDERSGATE CAMP 125 ALDERSGATE RD RAVENNA, KY 40472  PHONE: 606-723-5078
(KY 975); ALDERSGATE	ASH	13,575	SOFT MAPLE	3,354	
CAMP AND RETREAT	SYCAMORE	13,747	BASSWOOD	11,308	
CENTER; SOUTH OF	RED OAK	8,677	BEECH	3,953	
FITCHBURG FURNACE	WHITE OAK*	8,218	BL. WALNUT	2,352	
	HICKORY	16,926	BL. CHERRY	628	
(ESTILL COUNTY)	MISC: (INCLUDES BUCKEYE, BL. LOCUST, SOURWOOD)	588			<a href="mailto:dave@aldersgatecamp.org">dave@aldersgatecamp.org</a>

46 ACRES

TOTAL BF (DOYLE) 252,097

## KENTUCKY CONSULTING FORESTER TIMBER MARKED FOR SALE:

**CONTACT: KRAIG MOORE, FORESTER / BROKER**  
**FOR SALE REVIEW AND BID DETAILS AT:**



Cell (270) 792-4018  
Land Sales

1609 Harmony Way  
Bowling Green, KY 42103  
January 7, 2021

Fax (270) 781-8691  
Timber Marketing

**BID OPENING FRIDAY**  
**FEBRUARY 4<sup>th</sup> 9:00 a.m.**

**BID OPENING FRIDAY**  
**FEBRUARY 4<sup>th</sup> 9:00 a.m.**

### SUMMARY OF TIMBER MARKED FOR JOEY GIVENS

235 ACRES      ESTIMATED SALE VOLUME (DOYLE)    **1,432,000 BOARD FEET**

LOCATED: APPROXIMATELY 1000 STATE HIGHWAY 1187, LEWISBURG, KY.

FROM THE JUNCTION OF THE NATCHER PARKWAY AND HIGHWAY 70  
IN MORGANTOWN, PROCEED WEST ON HIGHWAY 70 FOR 7.0 MILES TO  
HIGHWAY 3205 (SILVER CITY ROAD).

PROCEED SOUTH ON 3205 FOR 2.7 MILES. TURN RIGHT ON HIGHWAY 1187  
(COAL ROAD) AND PROCEED 1.1 MILES TO PROPERTY ENTRANCE ON LEFT.

TIMBER FOR SALE SIGN AT ENTRANCE ON HIGHWAY. THE PROPERTY BEGINS  
APPROXIMATELY 1,300 FEET FROM HIGHWAY.

#### SPECIES AND VOLUME (BD FT)

*WHITE OAK	625,400	ASH	33,800
CHESTNUT OAK	246,200	SWEETGUM	7,400
MISC. RED OAK	238,600	SCARLET OAK	5,200
YELLOW POPLAR	128,900	POST OAK	4,000
HICKORY	60,900	**BLACK WALNUT	2,900
HARD MAPLE	37,700	BLACKGUM	2,700
BEECH	34,700	SOFT MAPLE	1,300
MISC. HARDWOODS	2,300		

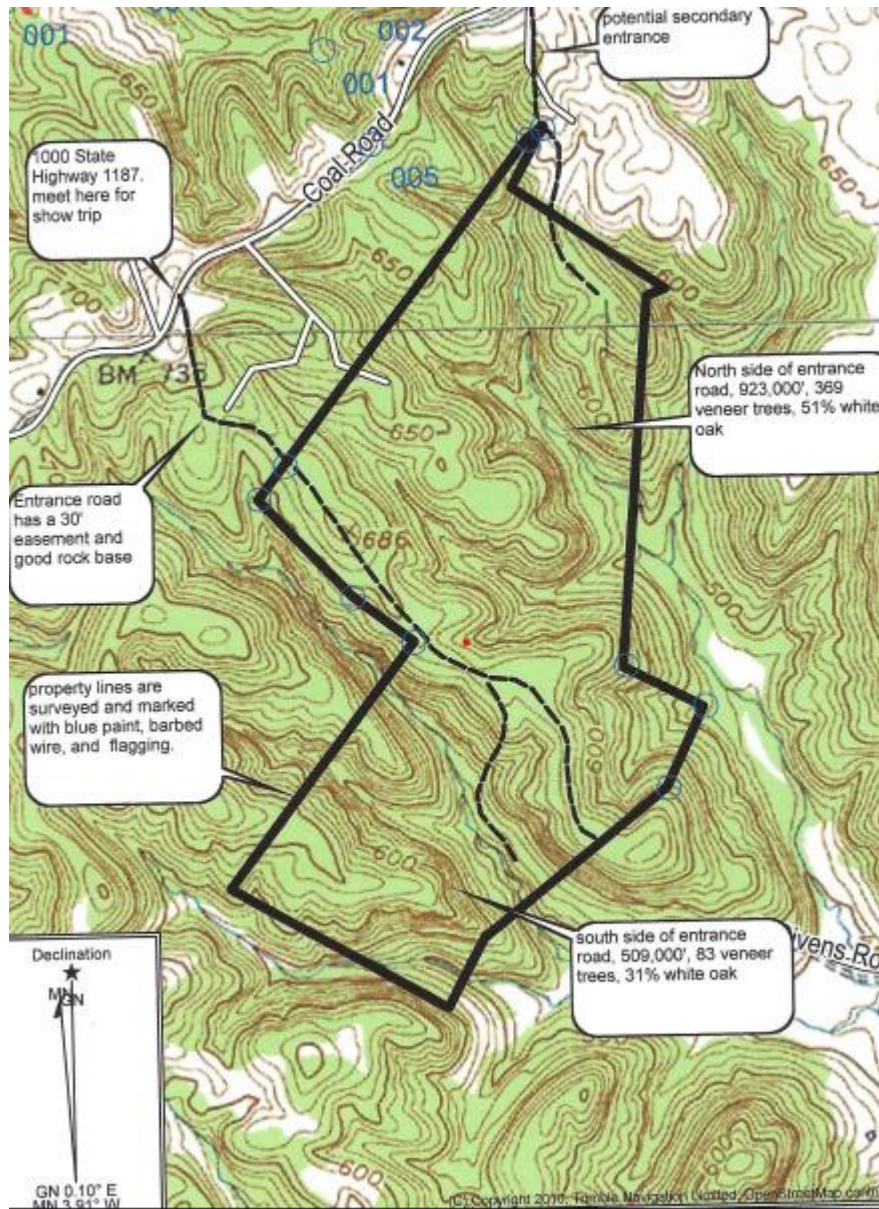
**TOTAL BF (DOYLE)    1,432,000 BD FT**

#### **NOTE:**

\*INCLUDES AN ESTIMATED 60,615 BD FT. OF WHITE OAK VENEER CONTAINED IN 449 TREES. THE WHITE OAK VENEER LOGS AVERAGE 18 INCHES ON SMALL END AND 10 FEET IN LENGTH.

\*\*INCLUDES AN ESTIMATED 543 BD FT. OF WALNUT VENEER CONTAINED IN 3 TREES. THESE VENEER TREES AVERAGE 20 INCHES ON SMALL END AND 10 FEET IN LENGTH.

## JOEY GIVENS TRACT



### MARKETING SUPPLEMENT

#### WANTED - SAWN FOREST PRODUCTS

Looking for a steady supply of 4/4 **white sappy hickory** lumber, (Select and Better). Can use green or kiln dried depending on distance of sourcing. Also buying 1 inch X 1 inch X 19 inches, **hickory** square blanks with minimal defect and with white sap color. Contact: Marvin Gingerich, 2175 Bradfordville Road, Campbellsville, KY 42718, Phone: 270-465-0505 or Eli Royal, 503-828-9212.

We are year-round buyers of 4/4 Green #1 C/Btr RO, 5/4 #1C/Btr RO and 4/4 #1C WO. Contact: Rick Goodin, Lebanon Oak Flooring Co., 215 Taylor Ave., Lebanon, KY. tel: 270-692-2128, fax: 270-692-2128.

Wanted: suppliers of **oak and mixed hardwood crossties and switch ties. all sizes of crossties**, 7"x 9"x 8'6", 7"x 8"x 8'6" and 6"x 8"x 8'6". Switch ties of all lengths needed. Contact: Gene Willcutt at 812-789-5331, e-mail: [gwillcutt@stella-jones.com](mailto:gwillcutt@stella-jones.com) or Chris Womack at 812-243-0656, e-mail: [cwomack@stella-jones.com](mailto:cwomack@stella-jones.com). Stella-Jones Corp., 3818 S. Co. Rd. 50 E., Winslow, IN.

Looking for suppliers of **crossties, switch ties, and gum panels. sweetgum ties and oak timbers**. Yards at Beaver Dam, Paducah, Owensboro, and Guthrie, KY. Contact: Ted Owens, Koppers, Inc., P.O. Box 8, Guthrie, KY 42234, tel: 270-483-2458, email: [owensht@koppers.com](mailto:owensht@koppers.com).

### **WANTED - FOREST PRODUCTS - STUMPAGE, LOGS, AND BOLTS**

Interested in purchasing **yellow poplar and pine logs**. Contact: David Jones, 502-319-3067, Franklin County

Interested in buying **ash and persimmon logs**. Ash log lengths, 10 feet and 13 feet. Persimmon logs in 8, 10, and 12 feet in length with a minimum diameter of 10 inches. Contact: Mark Childress 1-800-635-3098

Roundtree Corporation is a year-round purchaser of **walnut and white oak** veneer logs and sawlogs. The owners have been buying **walnut** logs for 45 years, non-stop. Field inspection is available for better parcels. Contact: John Willmott, 859-582-1753. Log yard: 1552 Winston Rd., Irvine, KY 40336; Hours: 8:00 am – 3:00 pm, Monday – Thursday.

**Buying red cedar and pine logs**. Call: Gerald Beatty, American Wood Fibers, 390 Warehouse Rd., Lebanon, KY 40033. Tel: 800-662-5459 or 270-692-3000. Inquire about new buying price.

The Freeman Corporation operates a veneer mill in Winchester, KY. Our salaried log buyers travel year-round to purchase veneer logs and standing timber. We pay competitive prices for quality **ash, walnut, cherry, red oak, and white oak logs**. For additional information, contact: The Freeman Corp., PO Box 96, Winchester, KY 40392, tel: 859-744-4311.

**Your pine material is worth more than you think!!** We want fresh yellow pine that will make good fence posts or poles and are paying top dollar for it. There are several different ways you can make more money with your quality pine material so call Steve and see what works best for both of us. Olympia Lumber and Post, 539 Sour Springs Rd., Olympia, KY 40358. Tel: 606-674-6296, 513-309-2763, email [denise@olympialumberandpost.com](mailto:denise@olympialumberandpost.com), web: [www.olympialumberandpost.com](http://www.olympialumberandpost.com).

**Attention loggers:** We need your low grade logs. We are the largest user of low grade logs in Central KY. Two locations to serve you better. Cub Run Hardwoods in Cub Run, KY and Quality Pallet Co. in Greensburg, KY. We buy year round. Pallet grade and tie logs. Paying competitive prices. We can arrange freight to pick up at your yard. Call for specs. Cub Run Hardwoods, Wilmer Yoder tel: 270-524-7811, Quality Pallet Co., Paul Peachey, tel: 270-932-2887.

J & T Lumber, wanting to **buy tie logs** – top prices paid. Contact: Tim Crawford, tel: 606-215-0612.

M. Bohlke Veneer is currently pursuing high quality **white oak and walnut** veneer logs, and/or standing timber. M. Bohlke Veneer has been in the timber business for over forty years. M. Bohlke Veneer has very competitive prices and prompt payment. For more information contact: Chuck Reece, cell: 513-368-8845, home: 513-896-4037. M. Bohlke Veneer Corp., 8375 N. Gilmore Rd., Fairfield, OH 45014. Log office: 513-682-1462.

### **SERVICES AVAILABLE**

**Arnzen Forestry Services** - specialize in selective timber marking and sales, other services include appraisals, timber trespass, management plans and timber stand improvement. Arnzen Forestry Services, Tim Arnzen, KACF, 627 Myers Road, Campbellsville, KY 42718. tel: 270-465-5672, cell: 270-849-6467, email: [tim@arnzenforestry.com](mailto:tim@arnzenforestry.com), web: [www.arnzenforestry.com](http://www.arnzenforestry.com).



**Cox Forestry Consulting, LLC** – providing the following services: management, inventory, marking, marketing, sale administration, timber appraisals, property boundary marking / survey and mapping, timber stand improvement, and tree plantings. Contact David Cox [coxforestryconsulting@gmail.com](mailto:coxforestryconsulting@gmail.com) or 502-802-6021.

**Consulting Forestry Services** - Central Kentucky Forest Management offers timber sale, management plan, and timber appraisal services. Contact: Chris Will, Central Kentucky Forest Management, Inc., 301 Stanford Ave., Danville, KY 40422. Tel: 859-238-2212, 859-516-1415, email: [chris@ckfm.net](mailto:chris@ckfm.net), web: [www.ckfm.net](http://www.ckfm.net).

**Custom Sawing / Portable Sawmill** – sawing services available in north central and northeastern Kentucky; Contact: Russell Iery, Tel: 606-796-6966, or email [russellkiery@windstream.net](mailto:russellkiery@windstream.net)

**Custom Sawing / Portable Sawmill** – sawing services available in Franklin and surrounding counties; Contact David Jones, 502-319-3067

**D & M Forestry** - specializing in timber cruising, grading, appraising, marketing and logging engineering services. Contact: Dick Brantigan, tel: 888-503-0004 or mobile, Tel: 859-771-0453, email: [dick@dmforest.com](mailto:dick@dmforest.com), web: [www.dmforest.com](http://www.dmforest.com).

**Forest Services** - timber sales (marking, grading, and marketing), cruising, appraisals, damage appraisals, management plans, pruning and cultural work on fine hardwoods (walnut a specialty), timber stand improvement work. Contact: Peter Kovalic, Kovalic Forest Services, Inc., 487 Ecton Rd., Winchester, KY 40391. Tel: 859-744-2930, cell: 859-595-2218, email: [jacqkov1@aol.com](mailto:jacqkov1@aol.com).

**Skees Forest Service** – over 30 years of experience. Private forestry consultant specializing in: timber harvest environment compliance, forest management, timber marking & marketing, inventory appraising & advertising. Contact: Gery Skees, 1154 Ford Hwy., Elizabethtown, KY 42701. Tel: 270-737-2476, cell: 270-234-3301, email: [gskees@windstream.net](mailto:gskees@windstream.net).

**Sourwood Forestry Consulting** – Forest management planning and implementation (FSI), timber sales and appraisals, custom inventories, mapping, data management design and development. Contact Scott Shouse at (859) 319-1611; [scott@sourwoodforestry.com](mailto:scott@sourwoodforestry.com), [www.sourwoodforestry.com](http://www.sourwoodforestry.com).

**Timberland Management** - Dynamic Forest Management specializes in timber marking and sales, timber inventory and appraisals, timber trespass cases, timber stand improvement, property boundary marking and custom mapping. Contact: Luke Biscan, 47 Frontage Rd, Glasgow, KY 42141. Tel: 270-404-4288, Email: [biscanluke@aol.com](mailto:biscanluke@aol.com)

## EQUIPMENT FOR SALE

**Used parts** shipped daily for log skidders, crawlers, loader backhoes, excavators, wheel loaders, and skid steers. Parts for: Allis Chalmers, Athey, Bantam/Koehring, Bobcat, Case, Clark, Daewoo, Dresser, Drott, Fiat Allis, Franklin, Hitachi, Hough, Hyundai, International, John Deere, Kobelco, Komatsu, Leihberr, Linkbelt, Michigan, Mitsubishi, New Holland, New Process, Pettibone, Samsung, Timbco, Timberjack, Treefarmer, Vme, Volvo. We have many reconditioned engines and transmissions that are dyno-tested. Rebuilt winches, final drives and used tires. If we do not have a part – we can locate it for you on one of our 3 nationwide parts locators. Contact: Schaefer Enterprises of Wolf Lake, Inc., 4535 State Route 3 North, Wolf Lake, IL 62998. Ask for Andy, Brad, Jill, Joe, Kevin, or Matt if buying. Ask for Jerry or Tom if selling. Call: 618-833-5498 or 800-626-6046, fax: 618-833-7765, email: [parts@sewlparts.com](mailto:parts@sewlparts.com), website: [www.sewlparts.com](http://www.sewlparts.com).

## KENTUCKY MASTER LOGGER PROGRAM

**Kentucky Master Logger Program is required by law** - the Kentucky Forest Conservation Act requires that at least one graduate of the KY Master Logger (KML) Program is on site and in charge of each commercial logging operation (excluding horse logging). The law also requires the use of bmp's on all commercial logging operations. The KML

Program is held 9:00am to 5:00pm local time. To successfully complete the KML program you must attend and participate in all three days. Each program is limited to 50 participants.

### **2021 KENTUCKY MASTER LOGGER PROGRAM SCHEDULE**

**Pre-registration is required to attend due to Covid-19. No walk-ins allowed**

**Registration Required.** All participants are required to register. Registration fee is **\$85.00** per person. Contact: Kentucky Master Logger Program, 859-257-6230, or click on “registration form” on the KML Website: <http://dept.ca.uky.edu/masterlogger/> or call 800-859-6006.

Feb. 9 – 11 (Cancelled)	<b>Hardin County</b> – Elizabethtown – Cooperative Extension Service Office, 201 Peterson Drive, Elizabethtown, KY
March 2 – 4	<b>Rowan County</b> – Morehead – Morehead Convention Center, Morehead, KY
April 6 – 8	<b>Hopkins County</b> – Madisonville - Cooperative Extension Service Office, 75 Cornwall Drive Madisonville, KY
May 11 – 13	<b>Floyd County</b> – Prestonsburg – Cooperative Extension Service Office, 3490 KY Route 321, Prestonsburg, KY
July 13 – 15	<b>Owen County</b> – Owenton - Cooperative Extension Office, 265 Ellis Hwy; Owenton, KY
Sept. 21 – 23	<b>Metcalf County</b> – Edmonton – Cooperative Extension Office, 422 East St., Edmonton, KY
Oct. 19 – 21	<b>Marshall County</b> – Benton - Cooperative Extension Office, 1933 Mayfield Hwy., Benton, KY
Nov. 16 – 18	<b>Clay County</b> - Manchester - Cooperative Extension Service Office, 69 Jameson Rd, Manchester, KY

### **2021 KML CONTINUING EDUCATION COURSE SCHEDULE**

**Registration required.** All participants are required to register. Registration fee is **\$50.00** per person for a 6 credit hour class unless otherwise noted. Contact: Kentucky Master Logger Program, 859-257-6230, 800-859-6006, or click on “registration form” in the KML Web site: <http://dept.ca.uky.edu/masterlogger/>.

February 4	<b>Hardin County</b> – Elizabethtown – “Principles of Forestry” – Cooperative Extension Service Office, 201 Peterson Drive, Elizabethtown, KY
February 18	<b>Laurel County</b> – London – “Principles of Forestry” – London Community Center, London, KY
February 23	<b>“LoggerTV Webinar”</b> – Selected Counties throughout the state – Contact your local Cooperative Extension Office to see if they are offering the program
April 1	<b>Rowan County</b> – Morehead – “Timber Tips” – Morehead Convention Center, Morehead, KY
March 30	<b>Warren County</b> – Bowling Green – “Principles of Forestry” – Cooperative Extension Service Office, 3132 Nashville Rd., Bowling Green, KY
April 20	<b>Casey County</b> – Liberty – “Principles of Forestry” – Cooperative Extension Service Office, 1517 S. Wilkinson Blvd. Liberty, KY

April 22	<b>Christian County</b> – Hopkinsville – “Principles of Forestry” – Cooperative Extension Service Office, 2850 Pembroke Road, Hopkinsville, KY
May 6	<b>Floyd County</b> – Prestonsburg – “Timber Tips” – Jenny Wiley State Resort Park, Prestonsburg, KY
May 20	<b>Caldwell County</b> – Princeton – “Principles of Forestry” – UK Research & Education Center, Princeton, KY
May 25	<b>Muhlenberg County</b> – Powderly – GRCLC/KFIA Program – Muhlenberg County Agriculture and Convention Center, Powderly, KY
May 27	<b>Owen County</b> – Owenton – “Timber Cruising Basics” – Cooperative Extension Office, 265 Ellis Hwy., Owenton, KY
June 1	<b>Bell County</b> – Pineville – “Principles of Forestry” – Pine Mountain State Resort Park, Pineville, KY
July 29	<b>Carter County</b> – Olive Hill – “Principles of Forestry” – Carter Caves State Resort Park, Olive Hill, KY
August 4	<b>Metcalf County</b> – Edmonton – “Principles of Forestry” – Cooperative Extension Service Office, 422 East St., Edmonton, KY
September 8	<b>Ohio County</b> – Hartford – “Principles of Forestry” – Cooperative Extension Service Office, 1337 Clay St., Hartford, KY
October 28	<b>Floyd County</b> – Prestonsburg – “Timber Cruising Basics” – Cooperative Extension Service Office, 3490 KY Route 321, Prestonsburg, KY
November 9	<b>Harrison County</b> – Cynthiana – “Timber Cruising Basics” – Cooperative Extension Service Office, 668 New Lair Road, Cynthiana, KY

## CALENDAR OF EVENTS – 2021

Feb. 24-28	<b>Appalachian Hardwood Manufacturers, Inc. 2021 Annual Meeting</b> , Ponte Vedra Inn & Club, Ponte Vedra, Florida; Hotel Reservations: 888-839-9145; Contact AHMI office at 336-885-8315 or email: <a href="mailto:info@appalachianhardwood.org">info@appalachianhardwood.org</a>
March 16 – 17	<b>14<sup>th</sup>. Annual International Biomass Conference and Expo</b> , Virtual Event; Contact: <a href="mailto:service@bbiinternational.com">service@bbiinternational.com</a> or call 866-746-8385
March 27	<b>Ohio River Valley Woodlands and Wildlife Workshop</b> , Boone County Enrichment Center, 1824 Patrick Dr. Burlington, KY 41005; information call 859-257-7597 or <a href="mailto:forestry.extension@uky.edu">forestry.extension@uky.edu</a>
April 6 – 8	<b>Kentucky Forest Industries Association, 2021 Annual Meeting</b> , “Beyond COVID – 19”, Embassy Suites, Lexington, KY; Contact: Michele Brewer at 502-695-3979; or <a href="mailto:Michele@kfia.org">Michele@kfia.org</a>
April 14 – 16	<b>International Wood Products Association, 65<sup>th</sup>. World of Wood Convention</b> , Hard Rock Hotel, San Diego, 207 5 <sup>th</sup> Avenue, San Diego, California 92101, Contact: IWPA at 703-820-6696 or <a href="mailto:info@iwpawood.org">info@iwpawood.org</a>
April 28 – 30	<b>National Wood Flooring Association Expo</b> , Baltimore, Maryland; Contact: NWFA at 1-800-422-4556 or <a href="http://www.nwfa.org">www.nwfa.org</a>

- May 17 – 19      **Forest Resources Association, 2021 Annual Meeting**, DoubleTree Nashville Downtown, Nashville, TN; Phone FRA: 202-296-3937 for more information
- May 21 – 22      **Richmond Expo 2021**, Richmond Raceway Complex, Richmond, Virginia; Contact: 804-737-5625 email [info@exporichmond.com](mailto:info@exporichmond.com)
- June (TBD)      **2021 Forest Products Society, Virtual International Conference**, for information: [www.fpsic2021.com](http://www.fpsic2021.com)
- June 6 – 11      **Kentucky Forest Leadership Program**, Jabez, KY; Contact Laurie Thomas, 859-257-2703, or [Laurie.Thomas@uky.edu](mailto:Laurie.Thomas@uky.edu)
- July 25 – 28      **2021 Walnut Council Annual Meeting**, Southern Illinois University, Carbondale, Illinois; Meeting Headquarters: Holiday Inn 2300 Reed Station Parkway, Carbondale, Illinois; Reservations Call 618-549-2600; Contact: 765-583-3501 or [walnutcouncil@walnutcouncil.org](mailto:walnutcouncil@walnutcouncil.org)
- Aug. 1 – 3      **2021 Appalachian Hardwood Manufacturers, Inc. Summer Meeting**, The Greenbrier, Information call: 336-885-8315 or email [info@appalachianhardwood.org](mailto:info@appalachianhardwood.org)
- Sept. 17 – 18      **Kentucky Wood Expo**, Lexington, KY; Contact [www.kfia.org](http://www.kfia.org) email [michele@kfia.org](mailto:michele@kfia.org)
- Sept. 22 – 24      **National Hardwood Lumber Association 2021 Annual Convention**, Palm County Convention Center, West Palm Beach; Contact: Desiree Freeman at 901-399-7566 or [registration@nhla.com](mailto:registration@nhla.com)
- Sept. 28 – 29      **Kentucky Woodland Owners Association, 2021 Annual Meeting**, Lake Cumberland State Resort Park, Reservations: 270-343-3111; Meeting registration and information, [www.kwoa.net](http://www.kwoa.net)
- Oct. (TBD)      **Win with Wood 2021**, University of Kentucky Wood Utilization Center, 311 Woodcenter Drive, Jackson, KY; Information contact: 606-666-2438 or [bammerma@uky.edu](mailto:bammerma@uky.edu)
- Oct. 9 – 12      **Associated Cooperage Industries of America, 2021 Convention**, Ocean Reef Club, Key Largo, Florida; Contact: ACIA office, 502-261-2242
- Oct. 17 – 23      **2021 National Forest Products Week**
- Oct. (TBD)      **2021 National Bioenergy Day**, [www.bioenergyday.com](http://www.bioenergyday.com)
- Oct. 25 – 28      **103<sup>rd</sup>. Railway Tie Association Symposium and Technical Conference**, The Westin Mission Hills Golf Resort and Spa, 71333 Dinah Shore Drive, Rancho Mirage, California; Contact: RTA at 770-460-5553 or [ties@rta.org](mailto:ties@rta.org)
- Nov. 3 – 7      **2021 Society of American Foresters, National Convention**, Sacramento Convention Center, Sacramento, California; Contact: 301-897-8720 email [membership@safnet.org](mailto:membership@safnet.org)

## CALENDAR OF EVENTS – 2022

- April 6 – 8      **International Wood Products Association, 66<sup>th</sup>. World of Wood Convention**, Orlando, Florida; Contact: IWPA at 703-820-6696 or [info@iwpawood.org](mailto:info@iwpawood.org)
- Aug. 23 – 26      **2022 International Woodworking Fair**, Georgia World Congress Center, 285 Andrew Young International Blvd., NW, Atlanta, Georgia; Contact: [info@iwwfatlanta.com](mailto:info@iwwfatlanta.com) or 404-693-8333



- Oct. (TBD)      **Win with Wood 2022**, University of Kentucky Wood Utilization Center, 311 Woodcenter Drive, Jackson, KY; Information contact: 606-666-2438 or [bammerma@uky.edu](mailto:bammerma@uky.edu)
- Oct 6 – 7      **Wood Products Manufacturers Association, Annual Meeting**, Portland, Maine; Contact: 978-874-5445 or [info@wpma.org](mailto:info@wpma.org) or via website: [www.wpma.org](http://www.wpma.org)

## ANNOUNCEMENT

- At last! A monthly buy-sell publication that reaches almost every sawmill and pallet mill in the USA. For your sawmill or pallet mill to be put on the mailing list, simply call 800-992-3432, and you will receive each month, at no charge, your copy of American Lumber & Pallet. Website: [www.amlumber.com](http://www.amlumber.com).
- **The National Wooden Pallet and Container Association** (NWPCA) is an international trade association of unit load professionals who manufacture, recycle and distribute pallets and other unit load bases, containers and reels. NWPCA is dedicated to the success of its members by helping them create environmentally responsible, cost-effective solutions to meet their customers' changing materials handling needs.
  - "Pallets Move the World...With Your Help", is a 10-minute training video on proper pallet handling techniques. It is designed for use by lift truck drivers, warehouse personnel and material handling professionals who want to increase their awareness of how proper pallet handling can save time and money by reducing damage. Get a copy now to improve your bottom line by improving your materials handling practices. Contact NWPCA directly at 703-527-7670 x 209. There is a charge for the video of \$29.95 (\$19.95 for NWPCA members). You may fax your order to 703-527-7717 or e-mail your request to [palletmbr@aol.com](mailto:palletmbr@aol.com). Please include your name, title, company, address, phone and fax numbers and credit card information.
  - Pallet and container solutions available online. The NWPCA Website (<http://www.nwpc.com>) features a continuously updated roster of pallet, container and reel providers, including contact information, a listing of the specific products and services they offer, and hotlinks to individual company websites. Pallet users can use the site to locate suppliers in their area that offer the products they need, including new and repaired pallets and containers, and services such as retrieval and recovery systems or disposal solutions. The NWPCA Website also contains information about pallet quality assurance programs; pallet design and construction standards; publications and services available from NWPCA and its member companies; and a calendar of events. An "industry watch" section features articles covering news and trends affecting the industry.
- **Wood Industries of Kentucky Directory**, searchable directory can be found at the UK forestry website: <https://kentuckywoodindustry.ca.uky.edu/>

### ***Harvest gold - charity! Help the kids!!!***

Timberland owners who have their timber cruised and marked for harvest may at their option - donate up to 10% of gross value or 10% of their trees, as IRS rules, tax deductible!! **Please donate** to: Kentucky Forest Industries Association's - "**Log-a-Load for Kids**" which benefits children's hospitals. 100% of contributions will go to the University of Kentucky Children's Hospital. You may call direct to [donate now!](#)

**Kentucky Forest Industries Association**, 106 Progress Drive, Frankfort, KY 40601 or 502-695-3979

# KENTUCKY DIVISION OF FORESTRY

## KENTUCKY DELIVERED LOG PRICE REPORT

JANUARY 2021

3rd. AND 4th. Quarters 2020



Forest Resource Utilization Program

Stewart M. West

Data compiled by Stewart West of the Forest Resource Utilization Program, Kentucky Division of Forestry. The prices listed are a range based on species, average High, Medium, and Low price ranges and specified purchased usage. All commercial logging must be done in compliance with the Kentucky Forest Conservation Act.

### REGION 1

HARDWOOD SAWLOGS - (AVERAGES \$/MBF)-Doyle

PRICE RANGE BY LOG TYPE\*

SPECIES				STAVE LOGS*	VENEER LOGS*	TIE LOGS*	PALLET LOGS*	CRATING LOGS*	MAT LOGS*	CHIP LOGS*	PULPWOOD*	HANDLE LOGS*	PEELER LOGS*
	HIGH	MEDIUM	LOW	HIGH-LOW	HIGH-LOW	(MBF) or \$/TON	(MBF) or \$/TON		HIGH-LOW		\$/TON		(MBF) or \$/TON
RDO	683	467	283			(350-550)							
WHO	1367	717	317	1725-1125		(400-450)							
HMA	717	433	250			(200-600)							
SMA	325	300	250			(400-500)							
ASH	538	417	250			(300-450)							
CHR	483	350	200			(300)							
WAL	1860	910	380		2000 - 1000								
HIC	517	400	200			(300)							
YPO	517	383	250										
COT-ELM	300	250	200										
SYC	200												
BEE-GUM	300		200			(300)							
CYP	500	350	200										
Misc HWD						(250-450)	(200-350)		350		\$30		

### REGION 2

HARDWOOD SAWLOGS - (AVERAGES \$/MBF)-Doyle

PRICE RANGE BY LOG TYPE\*

SPECIES				STAVE LOGS*	VENEER LOGS*	TIE LOGS*	PALLET LOGS*	CRATING LOGS*	MAT LOGS*	CHIP LOGS*	PULPWOOD*	\$/Ton	PEELER LOGS*
	HIGH	MEDIUM	LOW	HIGH-LOW	HIGH-LOW	(MBF) or \$/TON	(MBF) or \$/TON		HIGH-LOW		\$/TON		(MBF) or \$/TON
RDO	538	375	245			(350-400)							
WHO	1110	600	396	2000-775	3250-1500	(350-400)	(180-200)						
HMA	1038	700	438			(350-400)							
CHO	1083	525	427										
SMA	500	350				(350)							
ASH	520	400	256				(180)						
CHR	400					(400)							
WAL	1900	1100	367		5500-1750								
HIC	425	317	190				(180)						
YPO	483	367	243										
SYC	300		180										
ERC	800		325										
BEE-GUM	300						(180)						
Misc HWD						(250-500)	(150-300)		400-250				

### REGION 3

HARDWOOD SAWLOGS - (AVERAGES \$/MBF - Doyle) - \*\*International

PRICE RANGE BY LOG TYPE\*

SPECIES				STAVE LOGS*	VENEER LOGS*	TIE LOGS*	PALLET LOGS*	CRATING LOGS*	MAT LOGS*	FENCING*	PULPWOOD*	\$/Ton	PEELER LOGS*
	HIGH	MEDIUM	LOW	HIGH-LOW	HIGH-LOW	(MBF) or \$/TON	(MBF) or \$/TON		HIGH-LOW	(MBF)	\$/TON		(MBF) or \$/TON
RDO	750	300	200							(300)	\$26		
RDO**	550	450	300										
WHO	1500	600	200	1930-900	4000-1575					(400)	\$26		
WHO**	1250	900	350										
CHO	1550	600	200										
CHO**	1400	900	350										
HMA	1250	400	200										
HMA**	625												
SMA	475	350	200										
SMA**	525	400	300										
CHR	450	300	200										
CHR**	400												
WAL	1500	1000	300		7500-2175								
ASH	575	400	200										
ASH**	375	350	200										
YPO	525	300	200										
HIC**	350	300	250		900						\$26		
BAS**	200												
BEE-GUM	325		200			(325)							
SYC	200												
Misc HWD						(300-325)	(200-250)				\$26-\$29		

# REGION 4

HARDWOOD SAWLOGS - (AVERAGES \$/MBF)-Doyle

PRICE RANGE BY LOG TYPE\*

SPECIES				STAVE LOGS*	VENEER LOGS*	TIE LOGS*	PALLET LOGS*	CRATING LOGS*	MAT LOGS*	FENCING*	PULPWOOD*	\$/Ton	PEELER LOGS*
	HIGH	MEDIUM	LOW	HIGH-LOW	HIGH-LOW	(MBF) or \$/TON	(MBF) or \$/TON		HIGH-LOW		\$/TON		(MBF) or \$/TON
RDO	517	313	230			(275-500)	(150-180)						
WHO	1500	838	413	2057-714	4375-2200	(275-500)	(150-180)						
CHO	1414	700	300			(275-500)	(150-180)						
HMA	880	475	275			(275-500)	(150-180)						
SMA	510	325	238			(275-450)	(150-180)						
ASH	375	263	183			(300)	(150)						
CHR	538	363	250				(150)						
WAL	2583	1510	550		6760-2500								
HIC	620	367	250			(275-450)	(180)						
YPO	508	338	200				(150)						(250-350)
BAS	250	200	125										
BEE-GUM	150						(150)						
SYC	150						(150)						
Misc HWD						(200-400)	(100-200)		250-200		\$24		

Stewart H. West

This survey represents approximate log pricing received at the mill by the logger or individual selling to the mill. This does not represent, imply, or assume pricing for standing timber on your farm or woodland.

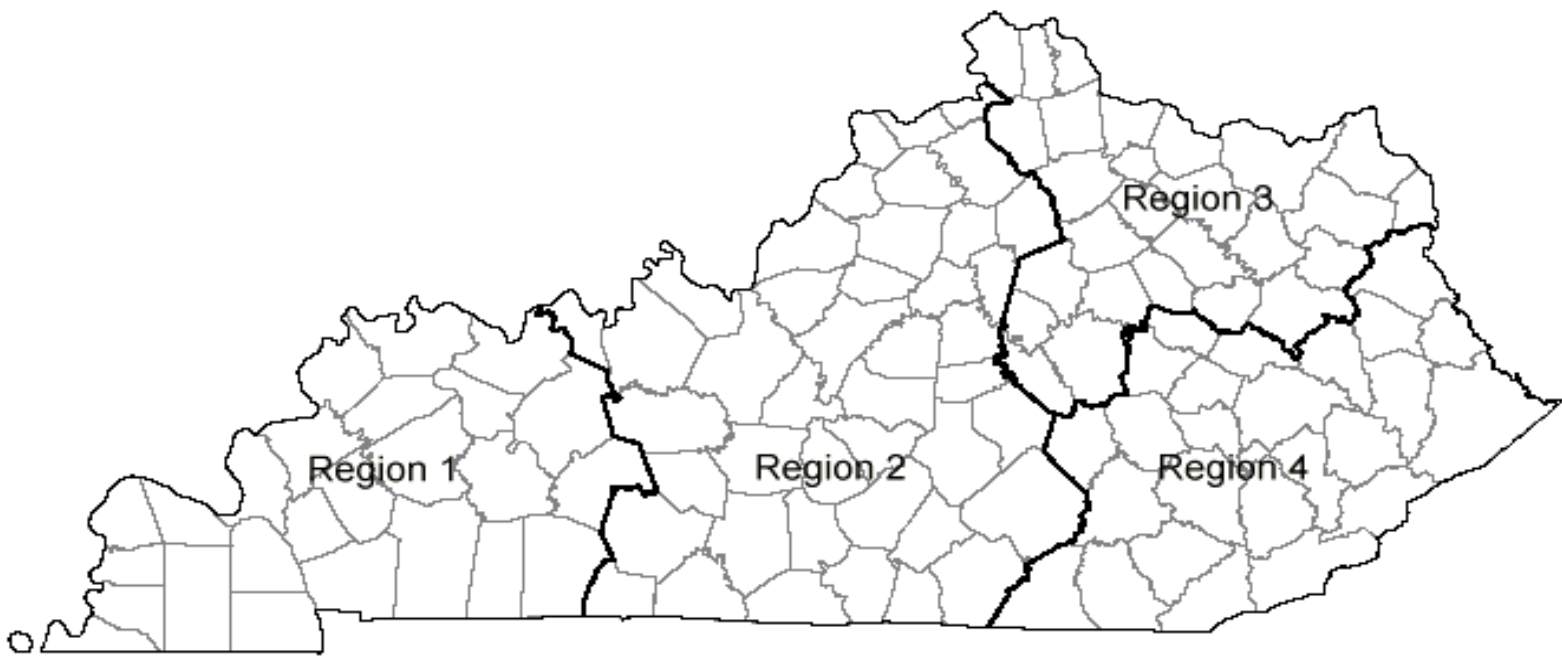
## Landowners and Farmers Please Note:

*In order to make full use of this log pricing data; you should have a cruising report performed by a qualified forester showing species, grade, and footage of the standing timber on your property. Additionally, you must also understand the related expenses in harvesting and transporting timber from your property to the purchasing mill. Farmers and landowners will receive stumpage prices less than those listed in this report by as much as 50% or more in some instances. Costs of logging vary greatly due to access, proximity of the timber to a main road, terrain, distance to the purchasing mill, prevailing conditions, species composition, timber quality, timber size, footage per acre, market species demand, and costs associated with the use of appropriate best management practices (bmps).*

Note: all values are expressed for unsawn logs delivered to the mill in dollars per 1000 board feet (mbf) as estimated by the Doyle log rule unless otherwise noted.

## LOG SPECIE CODES

SPECIES - HARDWOODS	CODE	SASSAFRAS	SAS
ASPEN	ASP	SCARLET OAK	SCO
ASH	ASH	SOFT MAPLE	SMA
BASSWOOD	BAS	SWEETGUM	SWG
BEECH	BEE	SYCAMORE	SYC
BIRCH	BIR	WALNUT	WAL
BLACKGUM	BLG	WHITE OAK	WHO
BLACK OAK	BLO	YELLOW POPLAR	YPO
BUCKEYE	BUC		
CHESTNUT OAK	CHO		
CHERRY	CHR	<b>SPECIES - SOFTWOODS</b>	
COTTONWOOD	COT	CYPRESS	CYP
ELM	ELM	EASTERN REDCEDAR	ERC
SWEETGUM/BLACKGUM	GUM	HEMLOCK	HEM
HACKBERRY	HAC	MISCELLANEOUS SOFTWOODS	MSW
HICKORY	HIC	MISCELLANEOUS PINE	MPI
HARD MAPLE	HMA	PINE	PIN
MISCELLANEOUS HARDWOODS	MHS	SOUTHERN YELLOW PINE	SYP
NORTHERN RED OAK	NRO	WHITE PINE	WPI
PERSIMMON	PER	VIRGINIA PINE	VPI
PIN OAK	PNO		
RED OAK	RDO		



**LOG PRICE SURVEY REGIONS**





## Kentucky Master Logger Temporary Application Form

KML Office Use	KML-7
Date Received	_____
Received From	_____
Approved	YES NO

To apply for Kentucky Temporary Master Logger status:

1. Complete the personal information below.
2. Submit this completed form with the \$50.00 application fee.
3. Submit a completed 3-day Kentucky Master Logger Program registration form along with the \$85.00 program registration fee. On the form where specified select a program that is to be held within the 4 month temporary period.
4. Mail both forms and fees (\$135.00 total for the temporary and 3-day program registration) to:

Kentucky Master Logger Office  
U.K. Dept. of Forestry  
222 T. P. Cooper Bldg.  
Lexington, KY. 40546-0073

Make check or money order payable to: Kentucky Master Logger

Name: \_\_\_\_\_  
Last First M.I.

Street Address and/or P.O. Box: \_\_\_\_\_

City: \_\_\_\_\_ State: \_\_\_\_\_ Zip: \_\_\_\_\_

Telephone (Required): \_\_\_\_\_

County of Residence: \_\_\_\_\_

Signature: \_\_\_\_\_ Date: \_\_\_\_\_

Your application will be processed and your Kentucky Temporary Master Logger Designation Card, along with information regarding the 3-day program you registered for, will be sent to you at the mailing address you provided above.

**\*You may not work as a Temporary Master Logger  
until you receive your designation card.**

**\*The logger or operator must notify the nearest Kentucky Division of Forestry  
District Office before logging can begin when using a Temporary Master Logger.**

Revised 8/31/10



## Kentucky Master Logger 3-Day Program Registration Form

<b>KML Office Use</b>	<b>KML-8</b>
Date Received _____	
Received From _____	
Approved	YES NO

### Registration Requirements:

1. All spaces must be completed.
2. Print or type.
3. The \$85.00 registration fee must be included.
4. Thoroughly review Program Information Section.
5. Only one participant per registration form (Photocopies accepted).

### Mail registration form and fee to:

Kentucky Master Logger Office  
U.K. Dept. of Forestry  
222 T. P. Cooper Bldg.  
Lexington, KY. 40546-0073

### Registration Fee: \$85.00 per person

Make Checks or money orders payable to: Kentucky Master Logger

---

### Primary Occupation: (check one)

Logger \_\_\_\_\_ Landowner \_\_\_\_\_ Government Agency \_\_\_\_\_ Other \_\_\_\_\_

Name: \_\_\_\_\_  
Last First M.I.

Street Address and/or P.O. Box: \_\_\_\_\_

City: \_\_\_\_\_ State: \_\_\_\_\_ Zip: \_\_\_\_\_

Telephone (Required): \_\_\_\_\_

County of Residence: \_\_\_\_\_

---

### Training Location (Please specify which 3-day program you want to attend from the current schedule)

First Choice: \_\_\_\_\_ Dates: \_\_\_\_\_

Second Choice: \_\_\_\_\_ Dates: \_\_\_\_\_

---

### Important Program Information:

1. Registration fee is nonrefundable within five (5) working days prior to the first day of training. Participants will be prioritized for class space up to five (5) working days before the class.
2. If a participant cancels within five (5) working days or misses a session, he/she will be put on a waiting list for the next available training.
3. The participant must provide personal transportation to the field sites, as required at some locations.
4. The participant must furnish personal protective equipment (PPE) hard hat. Under no circumstances will participants be allowed onto field sites without proper PPE.
5. Classes are limited to fifty (50) participants, the Commonwealth of Kentucky reserves the right to cancel a program if there are not sufficient participants scheduled at a location.
6. Attendance of all three (3) sessions is required for graduation.

Revised 8/31/10



## Division of Forestry Field Office Locations



### Field Office Contact Information

Campbellsville	Frankfort	Morehead	Hazard	Madisonville	Pineville
Seth Dykas	Matt Haywood	James MacDonald	Jake Hall	Chuck Porter	Deano Carmical
120 Gaines Drive	P.O. Box 516	255 Rodburn Hollow	154 Grand Vue Plaza	P.O. Box 465	12008 US Hwy 25E
Campbellsville, KY 42718	Frankfort, KY 40602	Morehead, KY 40351	Hazard, KY 41701	Madisonville, KY 42431	Pineville, KY 40977
270-465-5071	502-573-1085	606-783-8625	606-435-6073	270-824-7527	606-337-3939



Kentucky's GROWING GOLD is edited bi-annually and distributed by the Kentucky Division of Forestry for the forest products industry of Kentucky. Its' space is devoted to listings of privately-owned timber for sale that has been marked for cutting, occasional articles and items of interest that have a bearing on the forest industry, and some references to applicable research pamphlets and bulletins dealing with primary problems.

Kentucky's GROWING GOLD is available electronically to those who request it. A call, a note, or a letter with your name, email address, and type of business of interest will place you on the mailing list at no charge. You may also request that GROWING GOLD be sent to your email address by including your mailing address with the information above. GROWING GOLD is available for viewing through the Kentucky Division of Forestry's website:

<https://eec.ky.gov/Natural-Resources/Forestry/Pages/default.aspx>

For an e-mail or printed copy, please send all correspondence to:

Stewart West, Forest Resource Utilization  
Division of Forestry, Department for Natural Resources  
Energy and Environment Cabinet  
300 Sower Blvd. – 4<sup>th</sup> Floor  
Frankfort, KY 40601  
[stewart.west@ky.gov](mailto:stewart.west@ky.gov)

The Division of Forestry assumes no responsibility for items listed for sale or purchase.

The Energy and Environment Cabinet does not discriminate on the basis of race, color, national origin, sex, age, religion, or disability and provides, on request, reasonable accommodations including auxiliary aids and services necessary to afford with a disability an equal opportunity to participate in all serves, programs, and activities. For more information, contact the Division of Forestry at (502) 564-4496 between 8 a.m. to 4:30 p.m. EST. Hearing- and speech- impaired persons can contact the agency by using the Kentucky Relay Services, a toll-free telecommunications device for the deaf (TDD). For voice to TDD, call 1-800-648-6057. For TDD to voice, call 1-800-648-6056.

Kentucky Division of Forestry  
Department for Natural Resources  
Energy and Environment Cabinet  
300 Sower Blvd. – 4<sup>th</sup> Floor  
Frankfort, KY 40601  
#441



Printed with State Funds on Recycled Paper