



Andy Beshear
GOVERNOR

ENERGY AND ENVIRONMENT CABINET

DEPARTMENT FOR NATURAL RESOURCES

300 Sower Boulevard
Frankfort, Kentucky 40601
Telephone: 502-573-0140
Telefax: 502-564-4245

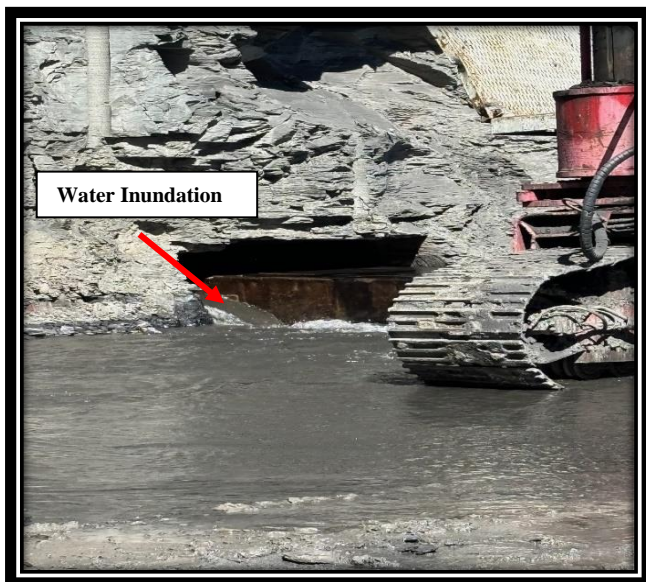
Rebecca Goodman
SECRETARY

Gordon R. Slone
COMMISSIONER

(Safety Alert – No. 4 – 2024)

Kentucky DMS – Alert No.4 Penetration of old works

On October 10, 2024, at approximately 1:00 pm, a non-injury incident occurred in the Harlan Branch. A highwall mining machine cut into an old underground mine inundating the pit area with water from the workings.



The Incident Scene

1. Ensure the certified mine map accurately notes abandoned mine workings.
2. If previous underground mining exists, a minimum 100-foot barrier will be maintained between the developed highwall miner entries and the previous underground mine workings.
3. When abandoned mines or abandoned parts of active mines are penetrated by drilling, machinery shall be stopped, and tests shall be made at the collar of the hole for explosive gas or oxygen deficiency by a competent person qualified to use approved instruments to make such tests. If tests show the presence of explosive or noxious gasses, all equipment shall be stopped and if possible de-energized until the condition has been corrected.