



ANDY BESHEAR
GOVERNOR

ENERGY AND ENVIRONMENT CABINET DEPARTMENT FOR NATURAL RESOURCES

300 SOWER BOULEVARD
FRANKFORT, KENTUCKY 40601
PHONE: (502) 564-3350
TELEFAX: 502-564-4245

REBECCA GOODMAN
SECRETARY

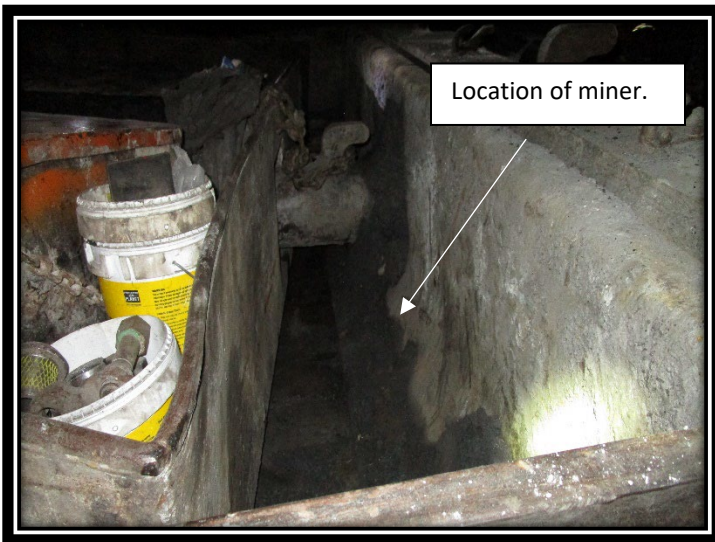
GORDON R. SLONE
COMMISSIONER

EMERGENCY AWARENESS BULLETIN (BULLETIN – NO. 2 – 2025)

On Wednesday, July 23, 2025, a 23-year-old underground miner with approximately 40 days of mining experience was injured while working at an underground mine in the Hazard Branch.

The accident occurred while the miner was riding in the bucket of a Model 35 Fairchild scoop, traveling bucket first. He was between the plunger and a supply insert. The insert contacted the mine rib, sliding back on the miner, causing crushing injuries to his hips and ribs.

Accident Scene



RECOMMENDATIONS TO PREVENT REOCCURRENCE

1. Never position yourself in an area where you can become pinned between moving parts or the release of stored energy.
2. 805 KAR 3:070. Loading, hauling, and dumping. Men shall not ride in dippers, buckets, forks, clamshells, or other parts of any equipment not specifically designed for the transportation of persons.
3. Miners shall be aware of their surroundings in relation to the movement of equipment and at no time position themselves in a pinch point.
4. All persons shall be trained in the programs, policies, and procedures for riding on equipment.