

DCf
2011

TABLE OF CONTENTS

Connecting the Dots.....2

Environmental Compliance Assistance Program.....3

Certification and Licensing Program6

Kentucky Brownfield Redevelopment Program.....9

KY EXCEL Program 12

Special Projects and Initiatives..... 15

Mission, Vision, Objectives 18

CONNECTING THE DOTS

It's hard to believe that another year has already passed. Looking over the Division of Compliance Assistance's last seven years, it is possible that this season has been the most challenging. Another round of budget cuts prevented program growth even though client needs and the effort required to meet these requests continued to increase.

As in years past, DCA rose to the occasion. The team worked together to ensure that all available resources were used responsibly and efficiently. Perhaps most importantly, the division defined a clear focus that connected the relationship between compliance, sustainability and the quality of our environment.

The first step in this process was revising the division's strategic plan. To reduce the organizational barriers that can develop with an emphasis on programs, DCA redefined its strategic objectives to highlight its three core responsibilities – certifying professionals, simplifying compliance and facilitating stewardship.

The second part was increasing quality. DCA staff understand that the significance of their impact is only as valuable as the quality of their services. This year, a tremendous amount of time was spent revising materials, updating procedures and emphasizing activities that make the most difference to the largest number of people.

The third step was improving delivery. DCA initiated innovative ways to provide more services without increasing expenses. Staff began using webinars and expanded its use of social media and email-based communications to ensure that timely information was provided to DCA clients. The team also used electronic tools to assess whether their efforts were making a measurable difference and then used that data to improve the performance of their programs.

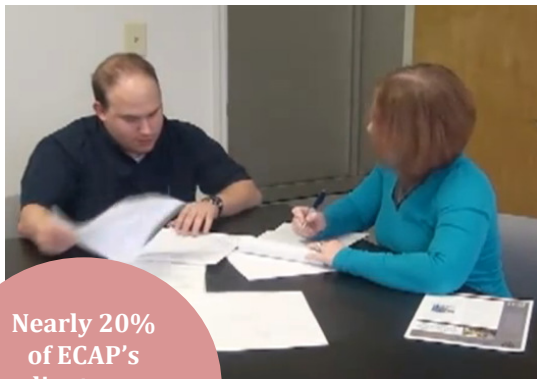
As DCA moves forward, it remains committed to being a valuable tool for Kentucky's businesses and citizens. It is with great pleasure that the division offers this report, highlighting its achievements during fiscal year 2011.

ENVIRONMENTAL COMPLIANCE ASSISTANCE PROGRAM

Have you ever had questions about environmental regulations or how to comply with a permit? The Environmental Compliance Assistance Program helps entities understand environmental requirements and improve their performance. Commonly referred to as ECAP, the nonregulatory program provides free assistance to a wide variety of clients, including individuals, businesses and governments.

Personal Attention

ECAP places a high priority on providing quality answers in a timely manner. During fiscal year 2011, ECAP responded to approximately 1,300 requests for assistance. Nearly all of



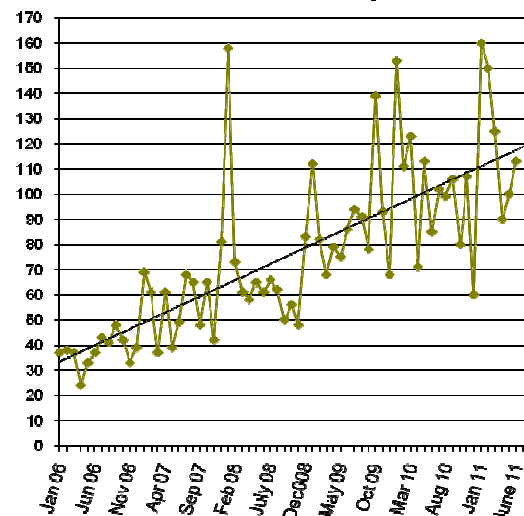
Nearly 20% of ECAP's clients are small businesses

these requests for help were addressed within 24 hours.

Perhaps one of the most challenged groups dealing with environmental requirements is Kentucky's small businesses. This cornerstone of Kentucky's economy often does not have the staffing and expertise necessary to fully understand the expectations of the department.

A primary area of focus for ECAP is one-on-one assistance related to air quality permit applications and paperwork. As part of the program's obligation under Section 507 of the Clean Air Act, ECAP helps small businesses calculate emissions, complete application forms, develop recordkeeping systems and complete required reports. ECAP also works with associations and economic development groups to assist small businesses and communities with important economic development projects. During fiscal year 2011, 20 percent of the small businesses assisted required in-depth assistance. Because of this help, these facilities were able to move forward with many new

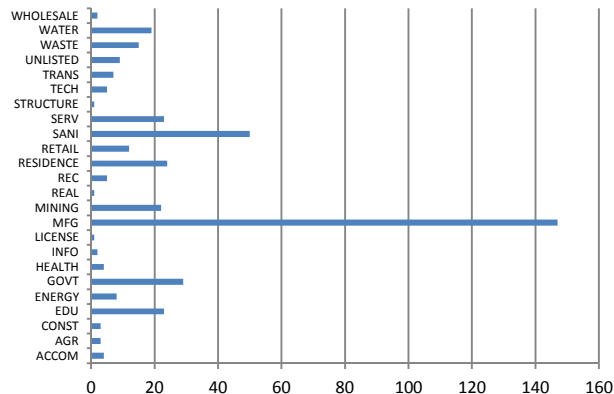
ECAP Assistance Requests



projects while staying compliant with Kentucky's laws and protecting our environment.

The clients that ECAP serves are both diverse and widespread. In fiscal year 2011, ECAP's three technical staff assisted entities in 111 of Kentucky's 120 counties. The manufacturing

Sectors Assisted in FY11 (32% Reporting)



sector represented 35 percent of all the requests received by the program. Other major sectors using ECAP services included local governments, educational institutions, wastewater utilities and individual residences.

Proactive Approach

Being proactive is an important way that ECAP serves Kentucky's small businesses and communities. The program makes it a

priority to stay current on upcoming regulations, training events and educational materials. ECAP is also an active participant in the National Small Business Assistance Program network.

A growing component of the ECAP program is its training efforts. During fiscal year 2011, ECAP expanded beyond classroom training. The program is now also using electronic communication tools and social media to educate its clients. These opportunities lower agency production costs, as well as make it easier for clients to participate. The efficiencies gained through the use of these resources have enabled ECAP to expand its reach and train a wide variety of audiences, ranging from gas station operators to government officials. Compliance assistance trainings offered in fiscal year 2011 included:

- Floodplains, Streams and Wetlands (151 attendees)
- ACC and Semi-Annual Reports (108 attendees)
- Anaerobic Digestion (30 attendees)
- Potential to Emit Calculations (49 attendees)
- Emergency Preparedness (25 attendees)
- Hazardous Waste Management (54 attendees)
- Environmental Management Planning (28 attendees)
- Introduction to Biodiesel (25 attendees)
- Gas Station Compliance (15 attendees)

Is ECAP making a difference?
Our clients think so.

74% indicate an increased understanding of environmental requirements

90% state that they made a positive behavior change

98% rate our services as good to excellent

ECAP also manages an electronic newsletter titled SNIPS. This email subscription provides a biweekly summary of new regulations, upcoming events and hot topics of concern to the environmental compliance community. With over 1,500 subscribers, SNIPS is growing and quickly becoming a recognized and trusted name.

Results Matter

Perhaps the most important measure that ECAP tracks is the positive impacts created by the program in Kentucky's businesses and communities. After working with ECAP, most entities say they are either improving their compliance by applying for a permit or registration or they are changing recordkeeping and reporting practices to assure they are meeting their environmental obligations.

CERTIFICATION AND LICENSING PROGRAM

The Operator Certification Program ensures that environmental professionals are capable of performing critical tasks to protect human health and the environment. The program establishes minimum professional standards for the operation and maintenance of drinking water, wastewater and solid waste systems. Certification is an important step in promoting compliance with the Safe Drinking Water Act (SDWA), Clean Water Act (CWA), Clean Air Act (CAA) and Resource Conservation Recovery Act (RCRA).

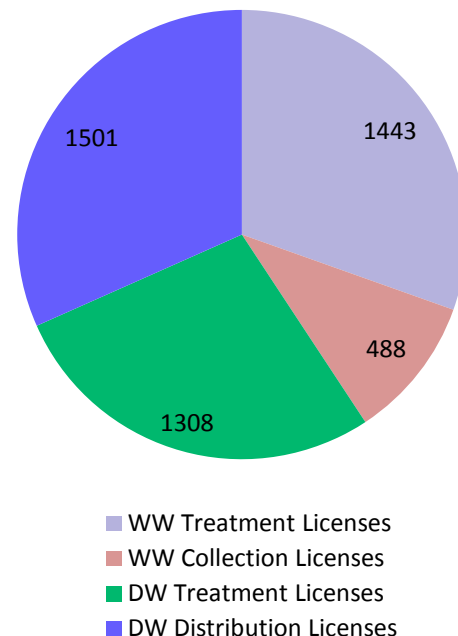
In fiscal year 2011, the certification program processed more than 1,000 applications from prospective operators and renewed an additional 1,900 active licenses

In January 2011, the Department for Environmental Protection transferred the administration of the solid waste certification program from the Division of Waste Management's Solid Waste Branch to the Division of Compliance Assistance's Certification and Licensing Branch. By allowing the Division of Compliance Assistance's Operator Certification Program to certify landfarm, landfill and composting operators, both the agency and the regulated community will see increased efficiencies in application reviews, training and exam administration.

License Administration

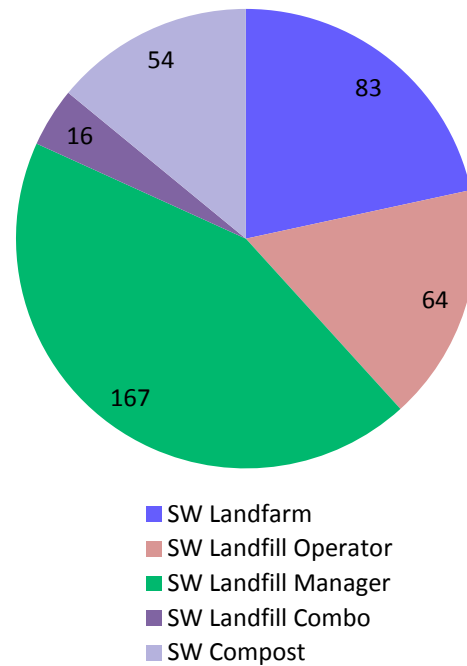
The Kentucky Operator Certification Program received 1,007 applications in fiscal year 2011 from operators wishing to take a certification exam. The program reviewed each application for completeness and verified that the applicant met the minimum educational and experience requirements for the exam being requested. The division administered 832 exams that resulted in the issuance of 254 new wastewater licenses, 259 new drinking water licenses and 39 new solid waste licenses.

Active Drinking Water and Wastewater Licenses



In addition to certifying new operators, the program must also ensure that existing operators properly maintain and renew their licenses. In fiscal year 2011, the certification program renewed 1,905 licenses. In spite of this large workload, the program was able to minimize the amount of time it spent working on renewals because 95 percent of the operators renewed their certifications electronically. By submitting their applications online, the operators were able to save the program approximately 40 days in staff time. This increased efficiency enables the program to pass on the cost savings to the operators through a 50 percent discount off the renewal fee.

Active Solid Waste Licenses



Operator Training

The Operator Certification Program offers a wide variety of training classes at low cost and in various locations across Kentucky. The program offers a higher standard of education to professionals that work in the operator industry. Certification training covers various topics, such as regulatory requirements; new technologies; issues associated with water and wastewater treatment, distribution and collection and solid waste management. Drinking water and wastewater operators are required to participate in a minimum amount of continuing education training every two years in order to retain their certification. While not required to obtain this training from the program, many operators participate in the Operator Certification Program's classes because of the quality training it provides. Solid waste operators are not required to acquire continuing education hours. However, they are required to attend an agency administered training and retest every five years in order to maintain their certification.

In fiscal year 2011, the program conducted 50 training events worth more than 600 continuing education hours. More than 1,700 individuals attended this training

The Kentucky Operator Certification Program is committed to the development of a curriculum that is challenging, innovative, interactive and relevant to the day-to-day operations of drinking water, wastewater and solid waste professionals. Training materials produced by the program include manuals, PowerPoint presentations, videos, reference materials, hands-on scenarios and humor to keep class participants engaged. As part of its commitment to providing high-quality training, the Operator Certification Program continued its partnership with the University of Kentucky to update and expand its training materials. This effort will make it easier for facilities to excel in their environmental responsibilities.



Wastewater operators learn about treatment techniques

Certification Board Support

The Operator Certification Program also continued to provide support to the Kentucky Board of Certification of Drinking Water Treatment and Distribution System Operators and the Kentucky Board of Certification of Wastewater System Operators. Board duties include reviewing applications, reciprocity requests, proposed regulation revisions, third-party training submittals and operator disciplinary action requests. During this fiscal year, the board saw an increase in the number of third-party training submittals. The certification boards combined reviewed 800 submittals from providers located all over the U.S.

KENTUCKY BROWNFIELD REDEVELOPMENT PROGRAM

Brownfields are properties that are abandoned or underused because people are afraid that the property is polluted. Brownfields can include properties such as old factories, former gas stations, meth labs, mine-scarred lands and old hospitals.

The Kentucky Brownfield Program works with communities and property owners to clean up and revitalize these properties. By recycling property into new, beneficial uses, communities are able to save valuable green space and restore neighborhoods. The program assists in these efforts by providing property assessments, grant and technical assistance and training. The program also works with communities to help them integrate sustainability into their community development.

In recognition of the Kentucky Brownfield Redevelopment Program's achievements, U.S. EPA increased Kentucky's federal funding this past year, from \$691,460 to \$791,460

Community Grant Assistance

Each year, the Environmental Protection Agency (EPA) awards grants to communities for the assessment and remediation of brownfield properties. The brownfield program provides workshops, grant review services and grant support events to assist communities in producing quality applications. Kentucky has received over \$5 million in federal brownfield funds over the past four years. In FY 2011, three communities received EPA Brownfield grants. Covington received a \$200,000 cleanup grant to address the Stewart Iron Works property. Lexington-Fayette Urban County Government received a \$200,000



Brownfield staff evaluate a property in a residential area

hazardous waste assessment grant. The City of Louisville received \$400,000 in assessment monies for hazardous waste and petroleum assessments. Louisville also received an additional \$500,000 to supplement an existing revolving loan fund.

Free Property Assessments

Determining the degree that a property is contaminated is the first step in the land-revitalization

process. An environmental assessment determines what, if any, pollutants are at a site, the extent of the contamination and concentration of the pollutants. The Kentucky Brownfield Redevelopment Program, in partnership with the Division of Waste Management, offers free assessments to local governments, nonprofits and quasi-governmental agencies. This service can save communities thousands of dollars and can help jump-start projects. This year the program provided assessment work at 17 sites in Kentucky.

2011 Property Assessment Recipients

- Deena Products - Carlisle Co.
- Former Western Auto Building - Hickman
- Former Johnson Co. Jail - Johnson Co.
- West Kentucky Battery - Kenton
- Burke Parsons Bowlby - Powell
- Owensboro- seven sites - Daviess Co.
- Former Baker Fine Color - Kenton Co.
- YouthBuild Louisville - Jefferson Co.
- Paintsville Residential Landfill - Johnson Co.
- J.I.L. Office Supply - Perry Co.
- Rednour Property - Wayne Co.

Education, Outreach and Technical Assistance

The Kentucky Brownfield Redevelopment Program has developed an outreach and educational program that works to educate people on brownfields, their potential uses and the resources available to facilitate revitalization activities. Program staff assist communities with grant writing, identifying funding sources and managing projects. The program also assists private sector entities that are interested in locating brownfield sites for redevelopment projects. From technical questions to workshops to site visits, the staff is always ready to help.

Program staff have worked to facilitate educational opportunities on a variety of topics throughout the year. Brownfield grant workshops, held in the fall, help entities learn the ins and outs of the application process. In conjunction with that event, there is the annual grant review party that aids applicants through peer review of their documents. The program helped arrange a series of trainings, entitled Blight to Bright, composed of a series of brownfield redevelopment webinars. The brownfield program also provides frequent educational sessions at conferences and meetings of entities, such as the Kentucky Department for Local Government, Kentucky League of Cities and Kentucky Council of Area Development Districts.

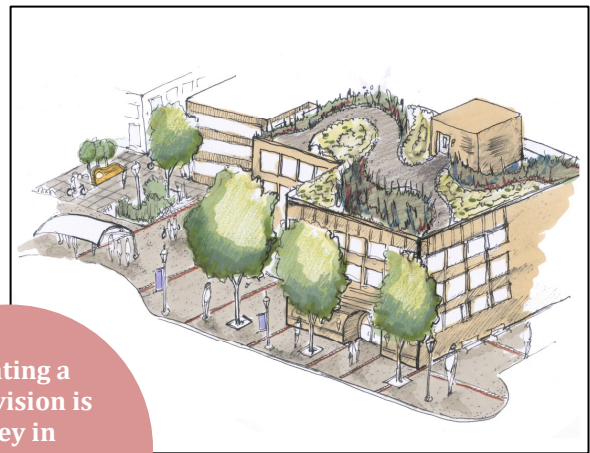
A National Leader

Last November, the Kentucky Brownfield Redevelopment Program kicked off its Appalachian Initiative by hosting the “Exploring Community Revitalization in Kentucky Conference.” This conference brought together a variety of stakeholders to discuss redevelopment topics specific to the Appalachian region of Kentucky and neighboring states. In support of that conference and the ongoing initiative, the program launched a Central Appalachian Revitalization Networks Facebook page where conference goers and other followers can stay in touch.

The Kentucky Brownfields Redevelopment Program is also actively involved with the Growing Local Economies Network, Appalachian Coal Country Watershed Team Training and the Reforestation and Biomass Opportunities on Former Surface Mine Lands Conference. The staff is also part of the planning committee for the Blue Sky Region Council/NALGEP regional brownfield conference.

Building a Vision

Visioning sessions for the cities of Lexington, Crab Orchard and Corbin were held in the spring of 2011. The events are meant to get public input for brownfield redevelopment projects. The sessions captured the wishes and wants of citizens as the cities go about redeveloping properties. An artist creates renderings from the commentary. The renderings can then be used to communicate their shared community vision to stakeholders and potential funders.



Creating a clear vision is a key in sustainable redevelopment

Energy Opportunities

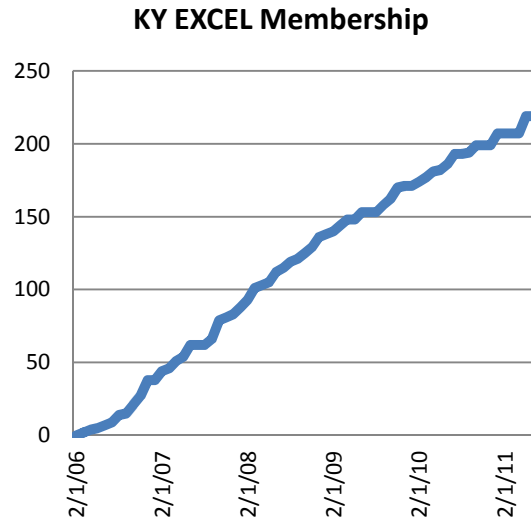
Energy development can also be enhanced through brownfield management. This year, the program, along with the Department for Energy Development and Independence, submitted an application for three “renewable energy on brownfields” feasibility studies.

KY EXCEL PROGRAM

KY EXCEL is a voluntary environmental leadership program with members that complete projects to improve Kentucky’s environment. By providing simple incentives to encourage participation, KY EXCEL has been able to facilitate the initiation of hundreds of projects that would not have been completed through regulatory programs. These voluntary projects are producing a positive benefit for Kentucky’s environment and the health of its citizens. KY EXCEL is open to all individuals, organizations, communities and businesses interested in improving Kentucky’s environment.

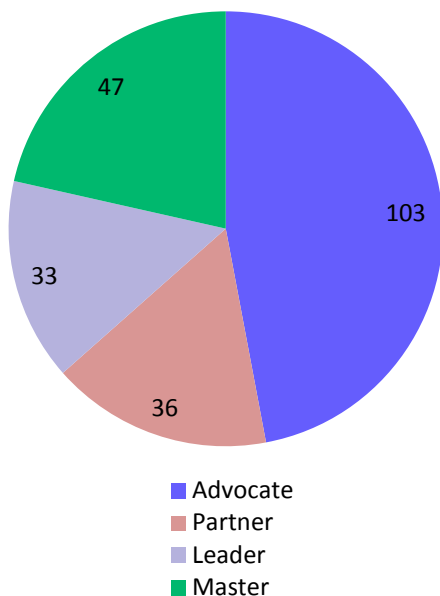
Membership Trends

Fiscal year 2011 was a challenging year for KY EXCEL. There were fewer applications for membership, but the members currently in the program remained passionate and appreciative of the program. They support and help other members when opportunities



arise. Membership in KY EXCEL has continued to grow even in a down economy. There are currently 219 program members.

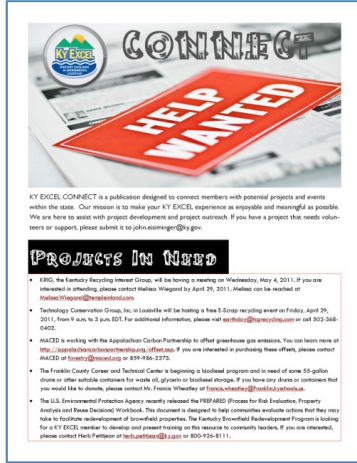
KY EXCEL Membership



Integrity of the program is important. In an effort to ensure KY EXCEL has members who work to achieve their membership obligations, the program conducts periodic reviews of KY EXCEL membership. Through these reviews, the program had to remove some members from the program.

Building Connections

KY EXCEL staff strive to create new benefits for KY EXCEL members. A new publication,



KY EXCEL Connect was launched this fiscal year for KY EXCEL members only. KY EXCEL Connect highlights member projects that other members might want to participate in or try. An example project that could be included in KY EXCEL Connect is an e-scrap day. Other members may be interested in this project because they have electronics they need to recycle, but might be unaware of the event without this newsletter. KY EXCEL Connect also lists projects that offer opportunities for partnering. KY EXCEL has also begun holding member chats, which are conducted quarterly via the Internet. KY EXCEL staff present a topic of interest to the members and then open up the chat session so members can mention problems, issues or topics they wish to discuss.

Making a Difference

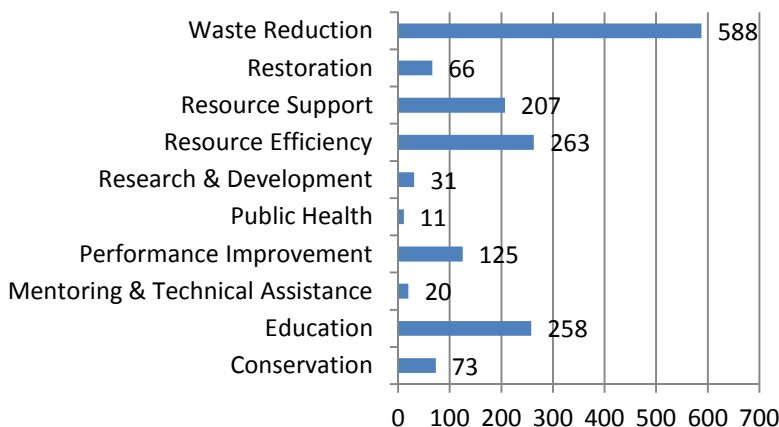
The backbone of KY EXCEL continues to be the voluntary projects conducted by program members. The results of these projects will positively impact Kentucky for years to come. Projects are sorted into one of 10 categories based on the type of project. KY EXCEL members have committed to performing over 1,600 projects. As depicted in the following graph, a majority of the projects being conducted are in the waste reduction category.

KY EXCEL members have performed more than 1,600 environmental projects

KY EXCEL staff also continue to participate in outreach activities, including meetings with current members and perspective members. Staff attended thirteen outreach events this fiscal year in an effort to increase membership in KY EXCEL. These events included participation in

Chamber of Commerce meetings, attending green fairs and conducting presentations about membership in the program.

Project Categories



Stewardship Training

KY EXCEL, as part of its mission to help develop environmental leaders and identify projects for existing members, initiated and completed several training events over the fiscal year that were sector or topic specific. These trainings are designed to outreach a sector on a variety of sustainability topics or target a specific sustainability topic that may be applicable to a variety of sectors. In the future, the program hopes to expand its offerings to meet additional needs of industries and groups as they engage in sustainability planning and implementation.

- LEED Certification Orientation
- Introduction to Composting
- Electronic Scrap and Recycling
- Eco-Dentistry Webinar
- Green Restaurants Training
- EMP

Select Results From 2011 KY EXCEL Projects

- Contributed 115,256 hours toward project completion
- Recycled 16,542 pounds of aluminum
- Saved 25,008,062 gallons of water
- Recycled 1,062,590 pounds of cardboard
- Saved 19,925 Kwh of electricity
- Recycled 15,834,814 pounds of paper
- Saved \$481,869
- Recycled 33,547 pounds of plastic
- Planted 18,234 trees
- Collected 24,300 pounds of waste
- Donated \$20,100 toward environmental programs
- Recycled 634,580 pounds of electronic scrap
- Collected 26,252 pounds of hazardous waste

SPECIAL PROJECTS AND INITIATIVES

Sustainability is defined as using natural resources without destroying the ecological balance of an area. During fiscal year 2011, DCA expanded its focus on sustainability by working on several sustainability projects that not only enhanced Kentucky's environment but also supported economic growth. The projects covered a variety of industries in Kentucky.

The Division received a grant in 2009 to work with gas stations to decrease their environmental footprint and increase their environmental compliance. The study area the Division chose to focus on was Franklin and Laurel counties. The stations in these counties



Energy efficiency opportunities being discussed at a Frankfort gas station

were given special assistance to aid in their compliance efforts and increase their sustainability.

In Franklin County, the stations also received one-on-one assistance, including site visits. During these visits, a walk-through of the facility was conducted to

determine areas they could improve to reduce their environmental footprint. Topics, such as water and electricity usage, waste generation, composting opportunities and recycling, were discussed. Through these efforts, one station in Franklin County was able to achieve electricity savings of \$500 in one month.

Another area of focus was the restaurant industry. The division hosted a training detailing opportunities for this industry to green itself. There were a variety of topics covered during the half-day training. Presentations were given on energy-efficient lighting, using used cooking oil for biodiesel and water efficiency. Representatives from restaurants, prisons and colleges and universities attended the training.



DCA trained Kentucky restaurants on ways to green their facilities



Large crowds at sporting events create environmental savings opportunities

DCA is also working to develop training for grocery stores and sporting venues. The trainings will focus on the different issues that affect these industries. Grocery stores have lighting, cooling, cooking, waste and other issues. The sporting venues have opportunities with composting, tailgating, lighting, cooling, cooking, recycling and more. The first sporting venue the agency is working with in detail is the horse racing industry. Site visits will be conducted to help determine what types of issues these two industries face and how the agency can provide the greatest assistance.

During FY 11, Kenya Stump, manger of DCA's Environmental Assistance Branch, was awarded a \$10,000 TogetherGreen fellowship to establish the Kentucky Biofuels for Schools program. The Division of Compliance Assistance acts as fiduciary partner for the fellowship. The program encourages Kentucky high schools to teach, produce and use biofuels within their schools and community. This will promote green job training, teach concepts of energy conservation, and demonstrate pollution prevention opportunities.

During the fiscal, year, the program successfully awarded \$5000 to the Franklin County Career and Technical center to support the development of their biodiesel program. The money was used to purchase and install a biodiesel processor to be used as part of the automotive technician training program. The program has also taught classes on incorporating biodiesel into the classroom curriculum, partnered on a teacher training grant, and provided informational resources on environmental requirement for biodiesel production. TogetherGreen is an alliance between Audubon and Toyota.



Who knew energy conservation and pollution prevention fit so nicely in an automotive garage?

The final sustainability project included in this report is the DEP Environmental Excellence Awards. Coordinated by DCA, awards are given annually to environmental leaders in Kentucky. The Environmental Pacesetter Award recognizes exemplary efforts to protect the environment, conserve resources and set an example for the Commonwealth. The Resource Caretaker Award is to recognize efforts to conserve Kentucky's resources. The Community Environmental Luminary Award recognizes achievements in community-based environmental education and outreach. Lastly, the KY EXCEL Champion Award recognizes a KY EXCEL member that has shown outstanding leadership in promoting the goals of KY EXCEL.



**First Lady
Beshear
recognizes
award winner
International
Paper**

MISSION VISION OBJECTIVES

MISSION

The Division of Compliance Assistance exists to provide services that increase environmental knowledge and change behaviors. We do this to improve regulatory compliance, achieve exceptional performance and enhance the quality of Kentucky's environment and communities.

VISION

The Division of Compliance Assistance will influence environmental stewardship throughout Kentucky. Kentucky's citizens will routinely trust the division as an important source of accurate and timely environmental information. Our proactive and innovative efforts will inspire others to take positive actions that improve the health of our citizens and enhance the quality of our environment.

OBJECTIVES

Certify qualified environmental professionals

We will certify select environmental professionals to maximize appropriate actions and effective operations at regulated locations.

Help entities comply with Kentucky's environmental requirements

We will assist and educate regulated entities so they understand and comply with their environmental obligations.

Facilitate environmental stewardship

We will assist, educate and encourage Kentucky's citizens so they make informed choices that value Kentucky's environment and create healthier, stronger communities.



KENTUCKY DIVISION OF COMPLIANCE ASSISTANCE

300 FAIR OAKS LANE
FRANKFORT, KY 40601

1-800-926-8111
ENVHELP@KY.GOV

DCA.KY.GOV