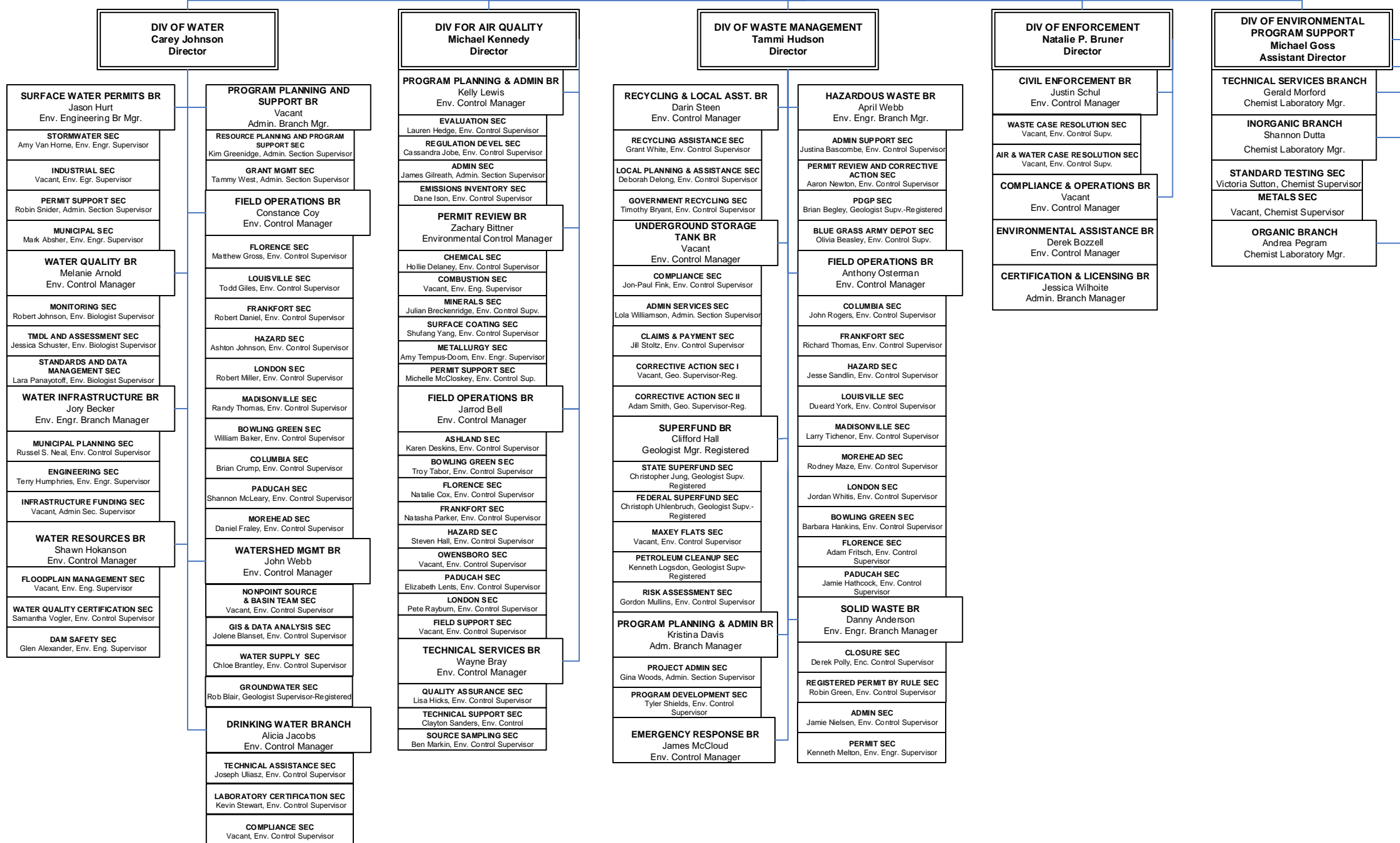


DEPARTMENT FOR ENVIRONMENTAL PROTECTION

Anthony R. Hatton, Commissioner
Amanda Lefevre, Deputy Commissioner



DIV OF WATER
Carey Johnson
Director

SURFACE WATER PERMITS BR
Jason Hurt
Env. Engineering Br Mgr.

STORMWATER SEC
Amy Van Horne, Env. Engr. Supervisor

INDUSTRIAL SEC
Vacant, Env. Egr. Supervisor

PERMIT SUPPORT SEC
Robin Snider, Admin. Section Supervisor

MUNICIPAL SEC
Mark Absher, Env. Engr. Supervisor

WATER QUALITY BR
Melanie Arnold
Env. Control Manager

MONITORING SEC
Robert Johnson, Env. Biologist Supervisor

TMDL AND ASSESSMENT SEC
Jessica Schuster, Env. Biologist Supervisor

STANDARDS AND DATA MANAGEMENT SEC
Lara Panayotoff, Env. Biologist Supervisor

WATER INFRASTRUCTURE BR
Jory Becker
Env. Engr. Branch Manager

MUNICIPAL PLANNING SEC
Russel S. Neal, Env. Control Supervisor

ENGINEERING SEC
Terry Humphries, Env. Engr. Supervisor

INFRASTRUCTURE FUNDING SEC
Vacant, Admin Sec. Supervisor

WATER RESOURCES BR
Shawn Hokanson
Env. Control Manager

FLOODPLAIN MANAGEMENT SEC
Vacant, Env. Eng. Supervisor

WATER QUALITY CERTIFICATION SEC
Samantha Vogler, Env. Control Supervisor

DAM SAFETY SEC
Glen Alexander, Env. Eng. Supervisor

PROGRAM PLANNING AND SUPPORT BR
Vacant
Admin. Branch Mgr.

RESOURCE PLANNING AND PROGRAM SUPPORT SEC
Kim Greenidge, Admin. Section Supervisor

GRANT MGMT SEC
Tammy West, Admin. Section Supervisor

FIELD OPERATIONS BR
Constance Coy
Env. Control Manager

FLORENCE SEC
Matthew Gross, Env. Control Supervisor

LOUISVILLE SEC
Todd Giles, Env. Control Supervisor

FRANKFORT SEC
Robert Daniel, Env. Control Supervisor

HAZARD SEC
Ashton Johnson, Env. Control Supervisor

LONDON SEC
Robert Miller, Env. Control Supervisor

MADISONVILLE SEC
Randy Thomas, Env. Control Supervisor

BOWLING GREEN SEC
William Baker, Env. Control Supervisor

COLUMBIA SEC
Brian Crump, Env. Control Supervisor

PADUCAH SEC
Shannon McLeary, Env. Control Supervisor

MOREHEAD SEC
Daniel Fraley, Env. Control Supervisor

WATERSHED MGMT BR
John Webb
Env. Control Manager

NONPOINT SOURCE & BASIN TEAM SEC
Vacant, Env. Control Supervisor

GIS & DATA ANALYSIS SEC
Jolene Blanset, Env. Control Supervisor

WATER SUPPLY SEC
Chloe Brantley, Env. Control Supervisor

GROUNDWATER SEC
Rob Blair, Geologist Supervisor-Registered

DRINKING WATER BRANCH
Alicia Jacobs
Env. Control Manager

TECHNICAL ASSISTANCE SEC
Joseph Uliasz, Env. Control Supervisor

LABORATORY CERTIFICATION SEC
Kevin Stewart, Env. Control Supervisor

COMPLIANCE SEC
Vacant, Env. Control Supervisor

DIV FOR AIR QUALITY
Michael Kennedy
Director

PROGRAM PLANNING & ADMIN BR
Kelly Lewis
Env. Control Manager

EVALUATION SEC
Lauren Hedge, Env. Control Supervisor

REGULATION DEVEL SEC
Cassandra Jobe, Env. Control Supervisor

ADMIN SEC
James Gilreath, Admin. Section Supervisor

EMISSIONS INVENTORY SEC
Dane Ison, Env. Control Supervisor

PERMIT REVIEW BR
Zachary Bittner
Environmental Control Manager

CHEMICAL SEC
Hollie Delaney, Env. Control Supervisor

COMBUSTION SEC
Vacant, Env. Eng. Supervisor

MINERALS SEC
Julian Breckenridge, Env. Control Supv.

SURFACE COATING SEC
Shufang Yang, Env. Control Supervisor

METALLURGY SEC
Amy Tempus-Doom, Env. Engr. Supervisor

PERMIT SUPPORT SEC
Michelle McCloskey, Env. Control Sup.

FIELD OPERATIONS BR
Jarrod Bell
Env. Control Manager

ASHLAND SEC
Karen Deskins, Env. Control Supervisor

BOWLING GREEN SEC
Troy Tabor, Env. Control Supervisor

FLORENCE SEC
Natalie Cox, Env. Control Supervisor

FRANKFORT SEC
Natasha Parker, Env. Control Supervisor

HAZARD SEC
Steven Hall, Env. Control Supervisor

OWENSBORO SEC
Vacant, Env. Control Supervisor

PADUCAH SEC
Elizabeth Lents, Env. Control Supervisor

LONDON SEC
Pete Rayburn, Env. Control Supervisor

FIELD SUPPORT SEC
Vacant, Env. Control Supervisor

TECHNICAL SERVICES BR
Wayne Bray
Env. Control Manager

QUALITY ASSURANCE SEC
Lisa Hicks, Env. Control Supervisor

TECHNICAL SUPPORT SEC
Clayton Sanders, Env. Control

SOURCE SAMPLING SEC
Ben Markin, Env. Control Supervisor

DIV OF WASTE MANAGEMENT
Tammi Hudson
Director

RECYCLING & LOCAL ASST. BR
Darin Steen
Env. Control Manager

RECYCLING ASSISTANCE SEC
Grant White, Env. Control Supervisor

LOCAL PLANNING & ASSISTANCE SEC
Deborah Delong, Env. Control Supervisor

GOVERNMENT RECYCLING SEC
Timothy Bryant, Env. Control Supervisor

UNDERGROUND STORAGE TANK BR
Vacant
Env. Control Manager

COMPLIANCE SEC
Jon-Paul Fink, Env. Control Supervisor

ADMIN SERVICES SEC
Lola Williamson, Admin. Section Supervisor

CLAIMS & PAYMENT SEC
Jill Stoltz, Env. Control Supervisor

CORRECTIVE ACTION SEC I
Vacant, Geo. Supervisor-Reg.

CORRECTIVE ACTION SEC II
Adam Smith, Geo. Supervisor-Reg.

SUPERFUND BR
Clifford Hall
Geologist Mgr. Registered

STATE SUPERFUND SEC
Christopher Jung, Geologist Supv. Registered

FEDERAL SUPERFUND SEC
Christoph Uhlenbruch, Geologist Supv.-Registered

MAXEY FLATS SEC
Vacant, Env. Control Supervisor

PETROLEUM CLEANUP SEC
Kenneth Logsdon, Geologist Supv.-Registered

RISK ASSESSMENT SEC
Gordon Mullins, Env. Control Supervisor

PROGRAM PLANNING & ADMIN BR
Kristina Davis
Adm. Branch Manager

PROJECT ADMIN SEC
Gina Woods, Admin. Section Supervisor

PROGRAM DEVELOPMENT SEC
Tyler Shields, Env. Control Supervisor

EMERGENCY RESPONSE BR
James McCloud
Env. Control Manager

HAZARDOUS WASTE BR
April Webb
Env. Engr. Branch Mgr.

ADMIN SUPPORT SEC
Justina Bascombe, Env. Control Supervisor

PERMIT REVIEW AND CORRECTIVE ACTION SEC
Aaron Newton, Env. Control Supervisor

PDGP SEC
Brian Begley, Geologist Supv.-Registered

BLUE GRASS ARMY DEPOT SEC
Olivia Beasley, Env. Control Supv.

FIELD OPERATIONS BR
Anthony Osterman
Env. Control Manager

COLUMBIA SEC
John Rogers, Env. Control Supervisor

FRANKFORT SEC
Richard Thomas, Env. Control Supervisor

HAZARD SEC
Jesse Sandlin, Env. Control Supervisor

LOUISVILLE SEC
Dueard York, Env. Control Supervisor

MADISONVILLE SEC
Larry Tichenor, Env. Control Supervisor

MOREHEAD SEC
Rodney Maze, Env. Control Supervisor

LONDON SEC
Jordan Whitis, Env. Control Supervisor

BOWLING GREEN SEC
Barbara Hankins, Env. Control Supervisor

FLORENCE SEC
Adam Fritsch, Env. Control Supervisor

PADUCAH SEC
Jamie Hathcock, Env. Control Supervisor

SOLID WASTE BR
Danny Anderson
Env. Engr. Branch Manager

CLOSURE SEC
Derek Polly, Enc. Control Supervisor

REGISTERED PERMIT BY RULE SEC
Robin Green, Env. Control Supervisor

ADMIN SEC
Jamie Nielsen, Env. Control Supervisor

PERMIT SEC
Kenneth Melton, Env. Engr. Supervisor

DIV OF ENFORCEMENT
Natalie P. Bruner
Director

CIVIL ENFORCEMENT BR
Justin Schul
Env. Control Manager

WASTE CASE RESOLUTION SEC
Vacant, Env. Control Supv.

AIR & WATER CASE RESOLUTION SEC
Vacant, Env. Control Supv.

COMPLIANCE & OPERATIONS BR
Vacant
Env. Control Manager

ENVIRONMENTAL ASSISTANCE BR
Derek Bozzell
Env. Control Manager

CERTIFICATION & LICENSING BR
Jessica Wilhoite
Admin. Branch Manager

DIV OF ENVIRONMENTAL PROGRAM SUPPORT
Michael Goss
Assistant Director

TECHNICAL SERVICES BRANCH
Gerald Morford
Chemist Laboratory Mgr.

INORGANIC BRANCH
Shannon Dutta
Chemist Laboratory Mgr.

STANDARD TESTING SEC
Victoria Sutton, Chemist Supervisor

METALS SEC
Vacant, Chemist Supervisor

ORGANIC BRANCH
Andrea Pegram
Chemist Laboratory Mgr.