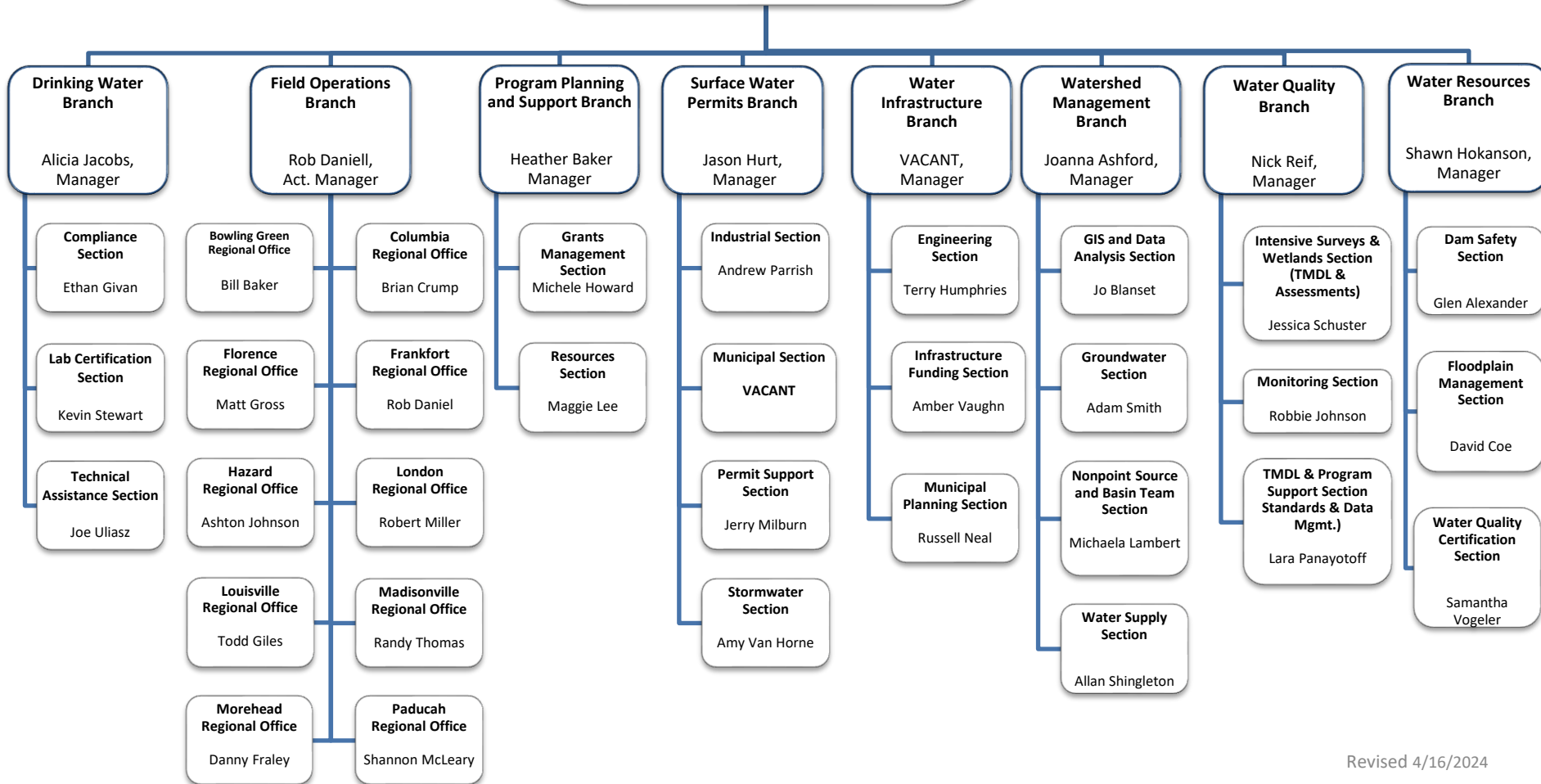
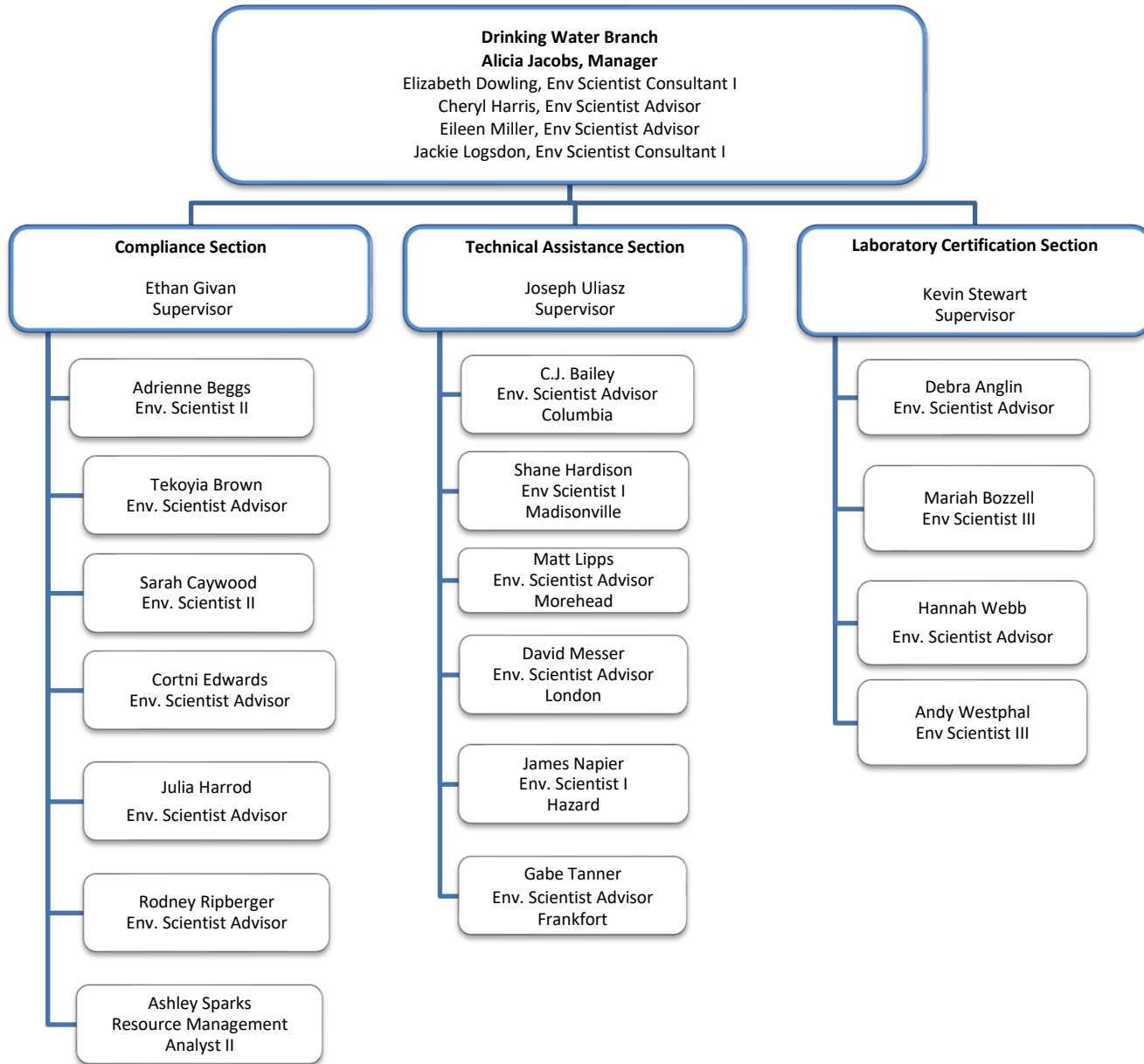


# DIVISION OF WATER

300 Sower Boulevard, Frankfort, KY 40601  
 Phone: 502.564.3410  
**Sarah Gaddis, Director**  
**John Webb, Assistant Director**  
 Melanie Arnold, Env Sci Consultant II  
 Jory Becker, Env Engineer Consultant  
 John Carlton, Admin Spec III  
 Carole Catalfo, Policy Specialist  
 Josiah Frey, Env Sci Consultant I





**Field Operations Branch**  
**Rob Daniell, Act. Manager**

Stefanie Osterman, Env Scientist Advisor  
Lorrie Rhodes, Program Coordinator  
Andrew Wooldridge, Env. Scientist II

**Bowling Green  
Field Office**

Bill Baker  
Supervisor

Bruce Hatcher  
Env. Scientist Advisor

Michael Horn  
Env. Scientist Advisor

Curtis McDaniel  
Env. Scientist III

Thomas Nicotera  
Geologist III

Bobbie Jo Tabor  
Co-Op/ intern

**Columbia  
Field Office**

Brian Crump  
Supervisor

Dwayne Barnes  
Env. Scientist Advisor

Cynthia Brumitt  
Env. Scientist Advisor

Logan Phelps  
Env. Scientist III

Jamie Powell  
Admin. Specialist III

Jason Stephens  
Env. Scientist Advisor

**Florence  
Field Office**

Matt Gross  
Supervisor

Abigail Harris  
Env. Scientist Advisor

Jeffrey Malsi  
Env. Scientist Advisor

Adam Smith  
Env. Scientist II

Anna Young  
Env. Scientist II

**Frankfort  
Field Office**

Rob Daniell  
Supervisor

John Hanks  
Env. Scientist Advisor

Jarod Jones  
Env. Scientist II

Deborah Singleton  
Env. Scientist Advisor

**Hazard  
Field Office**

Ashton Johnson  
Supervisor

Jerry Back  
Env. Scientist Advisor

Robert Back  
Env. Scientist Advisor

Skylar Campbell  
Env Scientist I

Joshua George  
Env. Scientist Advisor

Lonnie Klopp  
Env. Scientist Advisor

Wade Maggard  
Env. Scientist Advisor

**Field Operations Branch cont.**  
**Rob Daniell, Act. Manager**  
  
Stefanie Osterman, Env Scientist  
Advisor  
Lorrie Rhodes, Program Coordinator  
Andrew Wooldridge, Env. Scientist II

**London  
Field Office**  
  
Robert Miller  
Supervisor

Walter Brumley  
Env. Scientist I

Eddie Paige  
Env. Scientist III

Kendra Tincher  
Admin. Specialist III

Beth Trent  
Env. Scientist Advisor

Ryan Wilson  
Env. Scientist Advisor

**Louisville  
Field Office**  
  
Todd Giles  
Supervisor

Sarah Duker  
Env Scientist III

Jody Eilers  
Env. Scientist Advisor

Bridgett Miniard  
Env. Scientist I

Sara Stewart  
Env. Scientist III

**Madisonville  
Field Office**  
  
Randy Thomas  
Supervisor

Lindsey Bibbee  
Env. Scientist Advisor

Greg Logsdon  
Env Science Advisor

Amanda Ray  
Env. Scientist I

April Rich  
Env. Scientist II

Bruce Sampson  
Env. Scientist Advisor

**Morehead  
Field Office**  
  
Danny Fraley  
Supervisor

James Bevins  
Env Scientist Advisor

Ashley Bowen  
Env. Scientist Advisor

Corey Craft  
Env. Scientist Advisor

Corrina Middleton  
Admin. Specialist III

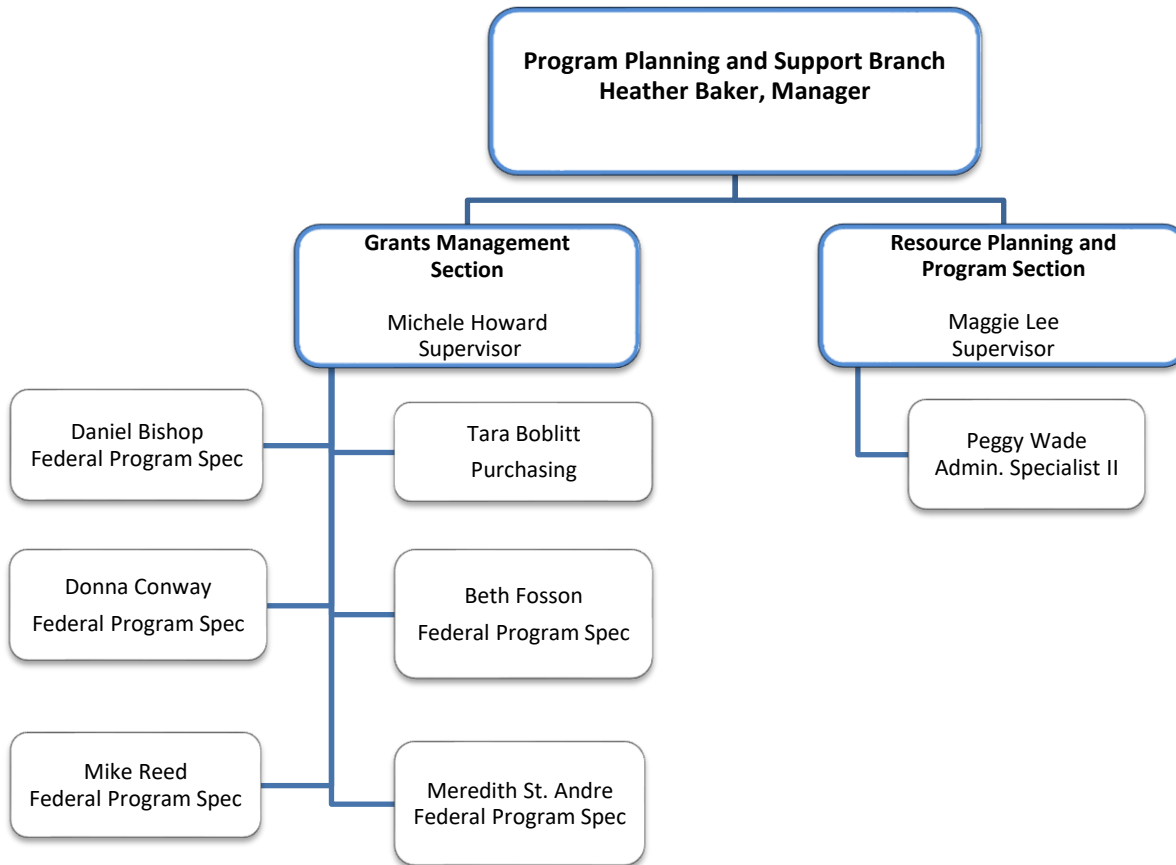
Thomas Nelson  
Geologist III

**Paducah  
Field Office**  
  
Shannon McLeary  
Supervisor

Zack Campbell  
Environmental Scientist III

Madeline Traylor  
Env. Scientist Advisor

Jessie York  
Env. Scientist Advisor



**Surface Water Permits Branch**  
**Jason Hurt, Manager**

Barry Elmore, Env. Engineer Consultant  
Greg Goode, Env. Engineer Consultant  
Robin Snider, RMA III

**Industrial Section**

Andrew Parrish  
Supervisor

Tyler Cook  
Env. Scientist Advisor

Sanjay Dulabh  
Env. Engineer Tech I

Matthew Fields  
Env. Scientist Advisor

Brenda Pecheco  
Env. Engineer Technologist I

Abbas Pourghasemi  
Env. Engineer Technologist II

Ronnie Thompson  
Env. Scientist Advisor

**Permit Support Section**

Jerry Milburn  
Supervisor

Crystal Dennis  
RMA II

Joy Haden  
Program Coordinator

Reedus Lee  
RMA III

Jake Stapleton  
RMA I

**Stormwater Section**

Amy Van Horne  
Supervisor

JP Beard  
Env. Scientist III

Rebecca Graves  
Env. Scientist Advisor

Ethan Lewis  
Env. Scientist I

Paul Tangel  
Env. Engineer Technologist I

Shannon Urbanik  
Env. Eng. Technologist II

Emily Jayne  
Env. Scientist Advisor

**Municipal Section**

VACANT  
Supervisor

Nicholas Bradford  
Env. Engineer Tech I

Paul Bridges  
Env. Engineer II

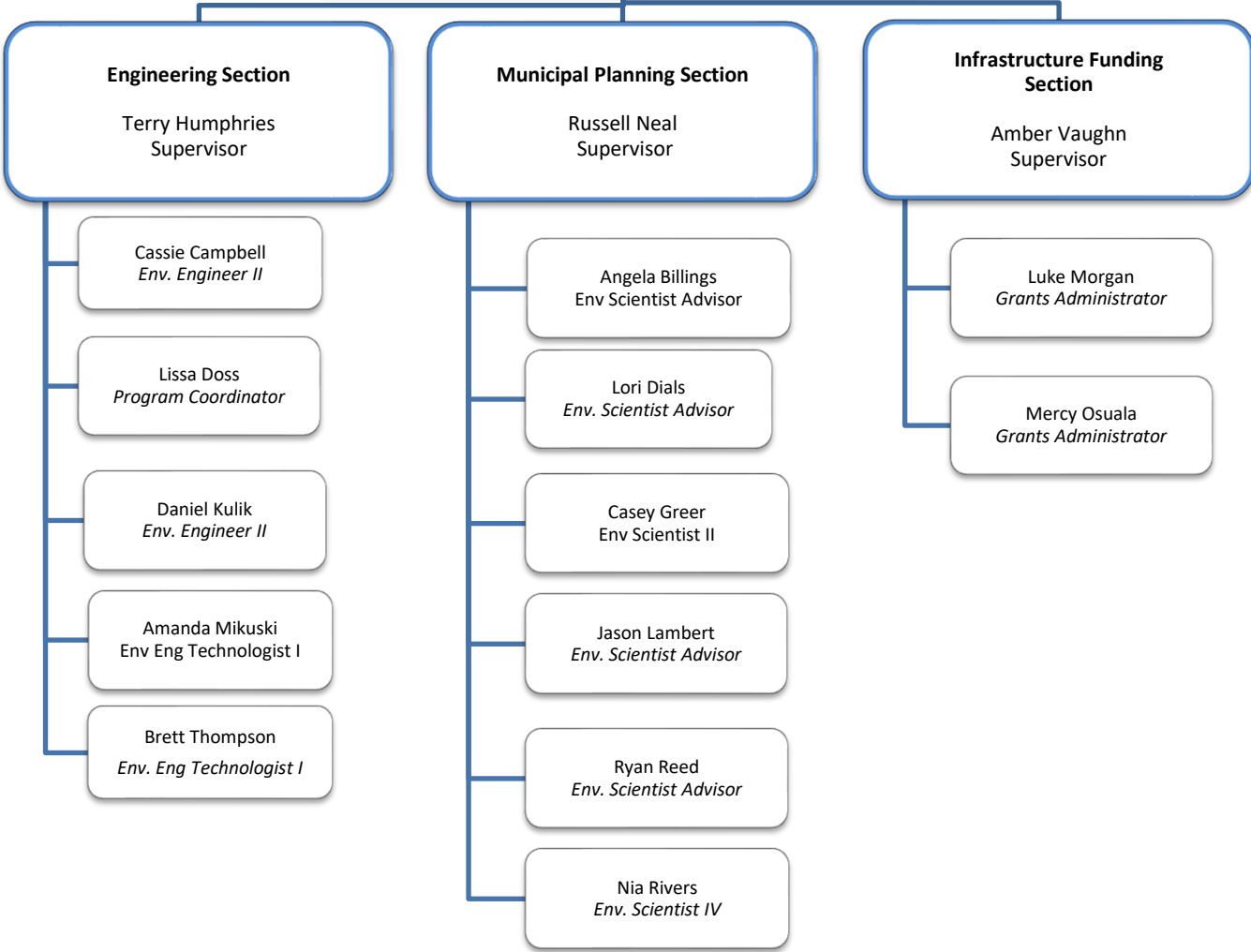
Sam Burns  
Env. Engineer Technologist. I

Lucas Hanks  
Env. Scientist Advisor

Abby Rains  
Env. Scientist Advisor

Mays Zaidan  
Env. Eng. Technologist I

**Water Infrastructure Branch**  
**VACANT, Manager**  
Mark Rasche, Env. Engineer Consultant



**Water Quality Branch**  
**Nick Reif, Branch Manager**  
Andrea Fredenburg, Env. Scientist Consultant I  
Katie McKone, Env. Scientist Consultant I

**Monitoring Section**  
Robert Johnson  
Supervisor

**TMDL and Program Support Section  
(Standards and Data Management Section)**  
Lara Panayotoff  
Supervisor

**Intensive Surveys & Wetlands  
(TMDL & Assessments Section)**  
Jessica Schuster  
Supervisor

- Colin Arnold  
Env. Biologist II
- Sandra Bojic  
Env. Biologist II
- Sara Craft  
Env. Biologist II
- Jacob Culp  
Env. Scientist Advisor
- Sarah Peter  
Intern  
Office Support Assistant
- Davy Black  
Env. Biologist II
- Keith Bowlin  
Env. Scientist Advisor
- David Cravens  
Env. Scientist Advisor
- David Smith  
Env. Biologist II

- Lindsay Burgoon  
Env Scientist III
- Hui Chen  
Env. Scientist Advisor
- Andrea Dustin  
Env Scientist III
- Patrick Hoban  
Env. Biologist II
- Lauren McDonald  
Env. Scientist Advisor
- Jesse Trost  
Intern  
Office Support Assistant

- Jacob Becraft  
Env. Biologist II
- John Brumley  
Env. Biologist I
- Rebecca Clark  
Env. Biologist II  
Madisonville
- Michele Cook  
Env. Scientist Advisor
- Ian Kratzer  
Env Biologist I
- Zack Meuth  
Env. Biologist II
- Mallory Miles  
Env. Biologist I
- Mary Rockey  
Env. Scientist Advisor
- Allyson Yarra  
Environmental Biologist II



**Water Resources Branch  
Shawn Hokanson, Manager**

Kaycie Len Carter, Env Scientist Consultant  
Alex VanPelt, Env Scientist Advisor

**Dam Safety Section**

Glen Alexander  
Supervisor

Beth Harrod  
Env Engineer II

Joselin Rodriguez  
Env Engineer Technologist I

Gabriel Singleton  
Office Support Assistant

Marilyn Thomas  
Env Engineer II

**Floodplain Management Section**

David Coe  
Supervisor

Kathy Allen  
Env Scientist III

Soheyl Bigdeli  
Env Engineer Technologist I

Kate Carigan  
Env Scientist III

Solitha Dharman  
Env Engineer II

Spencer Randall  
Env Engineer Technologist I

**Water Quality Certification Section**

Samantha Vogeler  
Supervisor

Morgan Bishop  
Env Biologist I

Conner Flora  
Env Biologist I

Kristine Gauthier  
Env Scientist I

Michael Heyn  
Env Scientist Advisor

Bryan Killian  
Env Scientist II

**Watershed Management Branch**  
**Joanna Ashford, Manager**

Paulette Akers, Env. Scientist Advisor  
Caroline Chan, Env. Scientist Consultant I  
Bill Caldwell, Env. Scientist Consultant I  
Josiah Frey, Env. Scientist V  
Jill Wilhelm, Admin. Spec. III

**GIS & Data Analysis Section**

Jo Blanset  
Supervisor

Will Goodman  
Geoprocessing Spec II

Jim Seay  
Geoprocessing Spec III

Samuel Sapeta  
Geo Specialist I

Wes Turner  
Env Scientist Advisor

Melissa Widman  
Geo. Specialist III

**Groundwater Section**

Adam Smith  
Supervisor

Tim Collins  
Env. Scientist IV

Aisha Malik  
Geologist I

Bronson McQueen  
Geologist II

Kurtis Spears  
Geologist III

**Nonpoint Source & Basin Team  
Section**

Michaela Lambert  
Supervisor

Nate Alexander  
Env. Scientist I

Haileigh Arnold  
Env. Scientist I

Chelsea Durbin  
Env. Scientist Advisor

Colin Duncan  
Env. Scientist I

Amber Hawkins  
Env. Scientist Advisor

Alice Mandt  
Env. Scientist Advisor

Jo Ann Palmer  
Program Coordinator

Brian Storz  
Env. Scientist III

**Water Supply Section**

Alan Shingleton  
Supervisor

Dale Booth  
Env. Scientist Advisor

Ben Currans  
Env Scientist Advisor

Will Goodman  
Geoprocessing Specialist II

Rita Hockensmith  
Resource Mgmt. Analyst III

Ryan Parks  
Geologist I

Chip Zimmer  
Env. Scientist Advisor