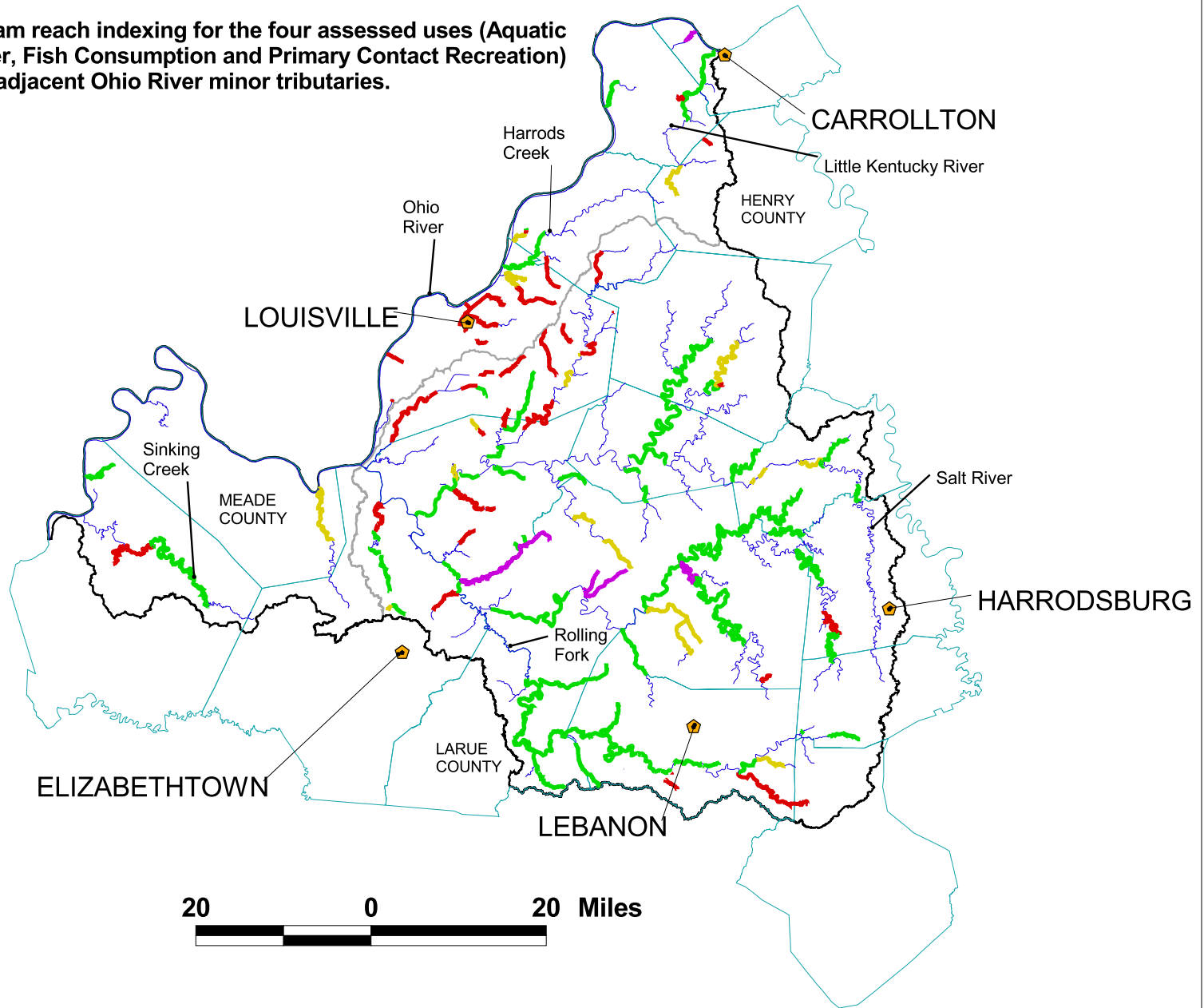
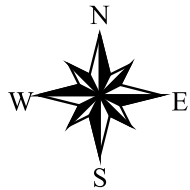
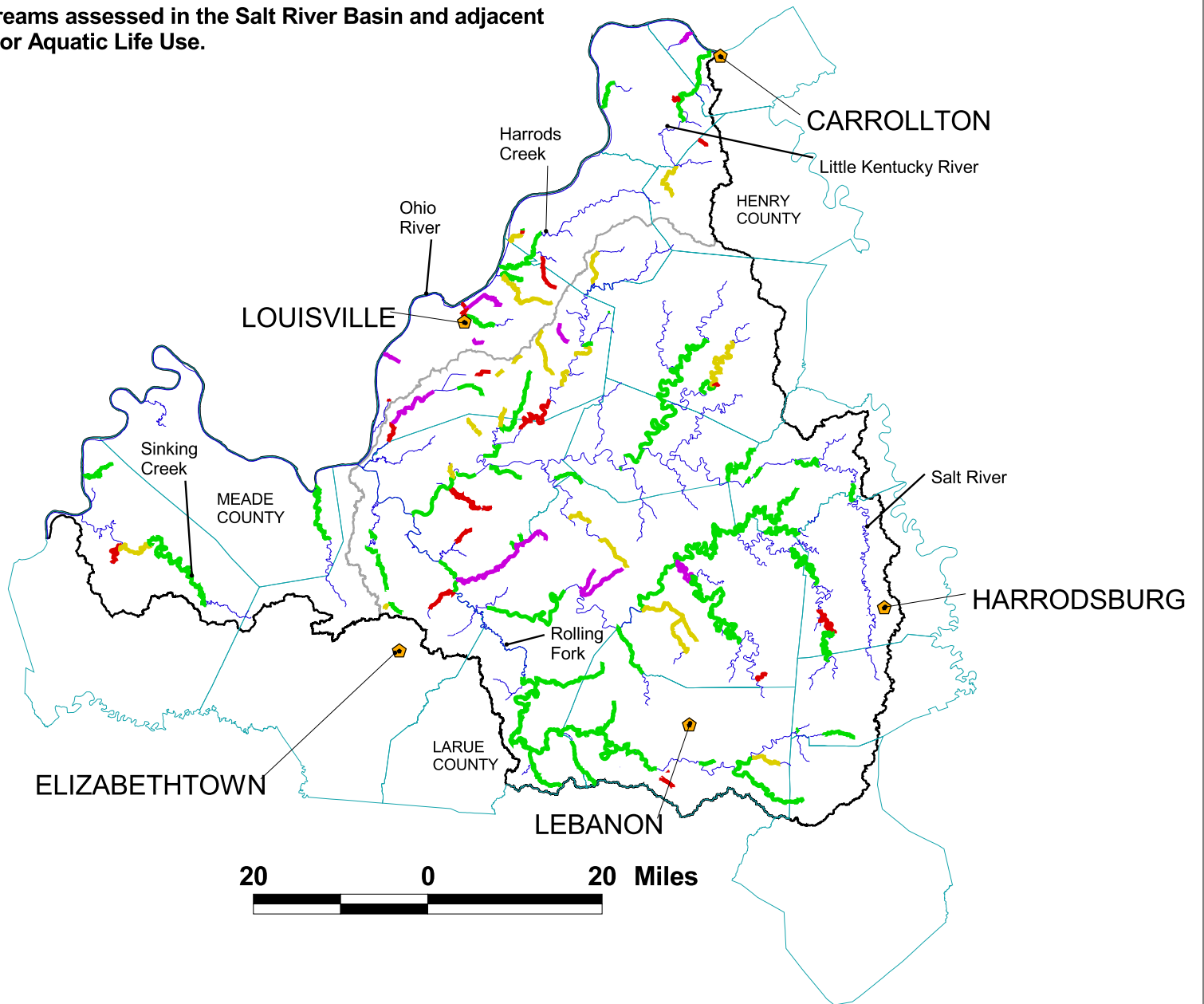
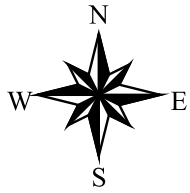


Combined overview of stream reach indexing for the four assessed uses (Aquatic Life Support, Drinking Water, Fish Consumption and Primary Contact Recreation) in the Salt River Basin and adjacent Ohio River minor tributaries.

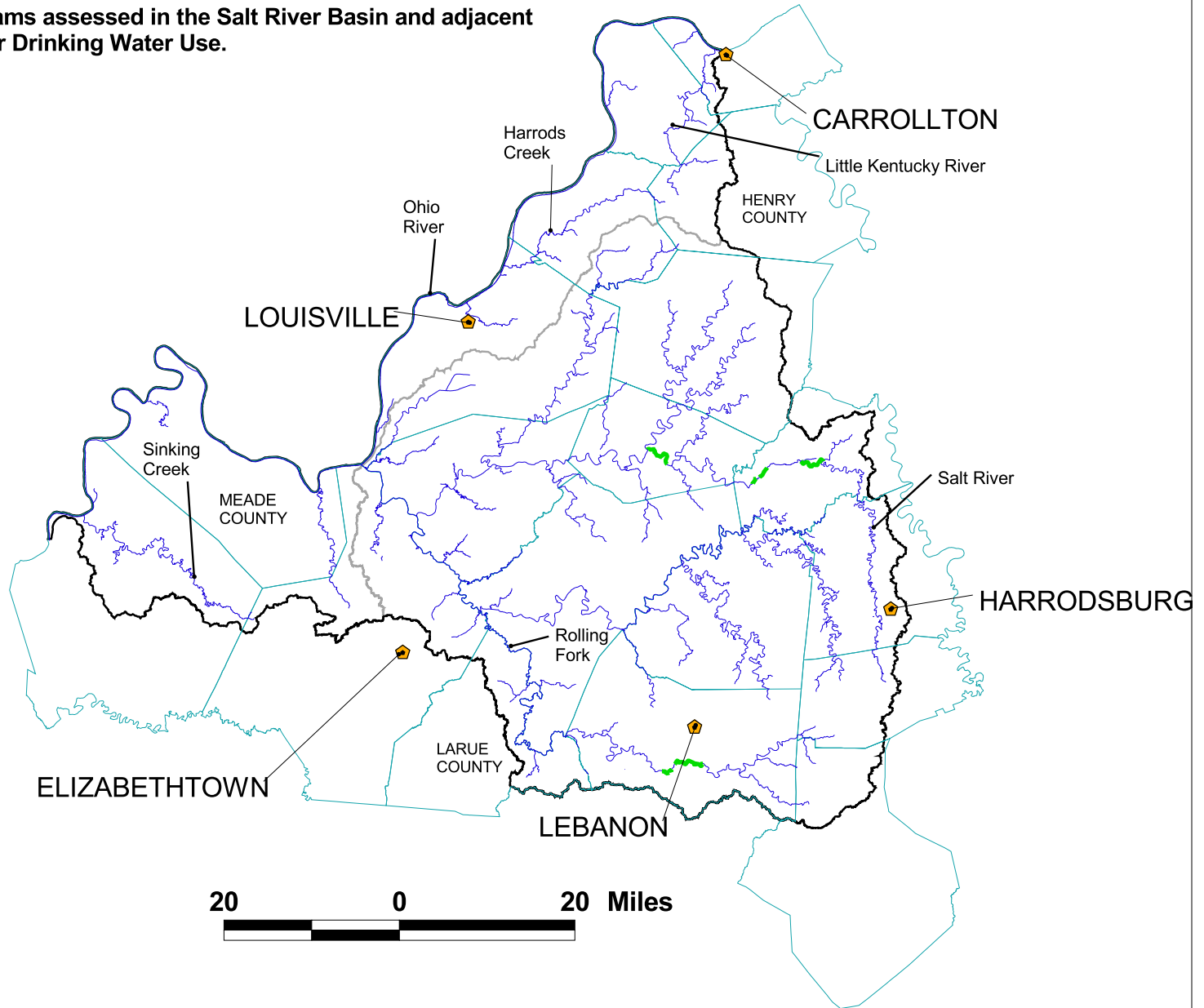
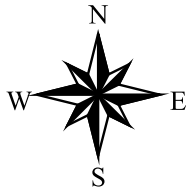











Reach indexing results of streams assessed in the Salt River Basin and adjacent Ohio River minor tributaries or Aquatic Life Use.



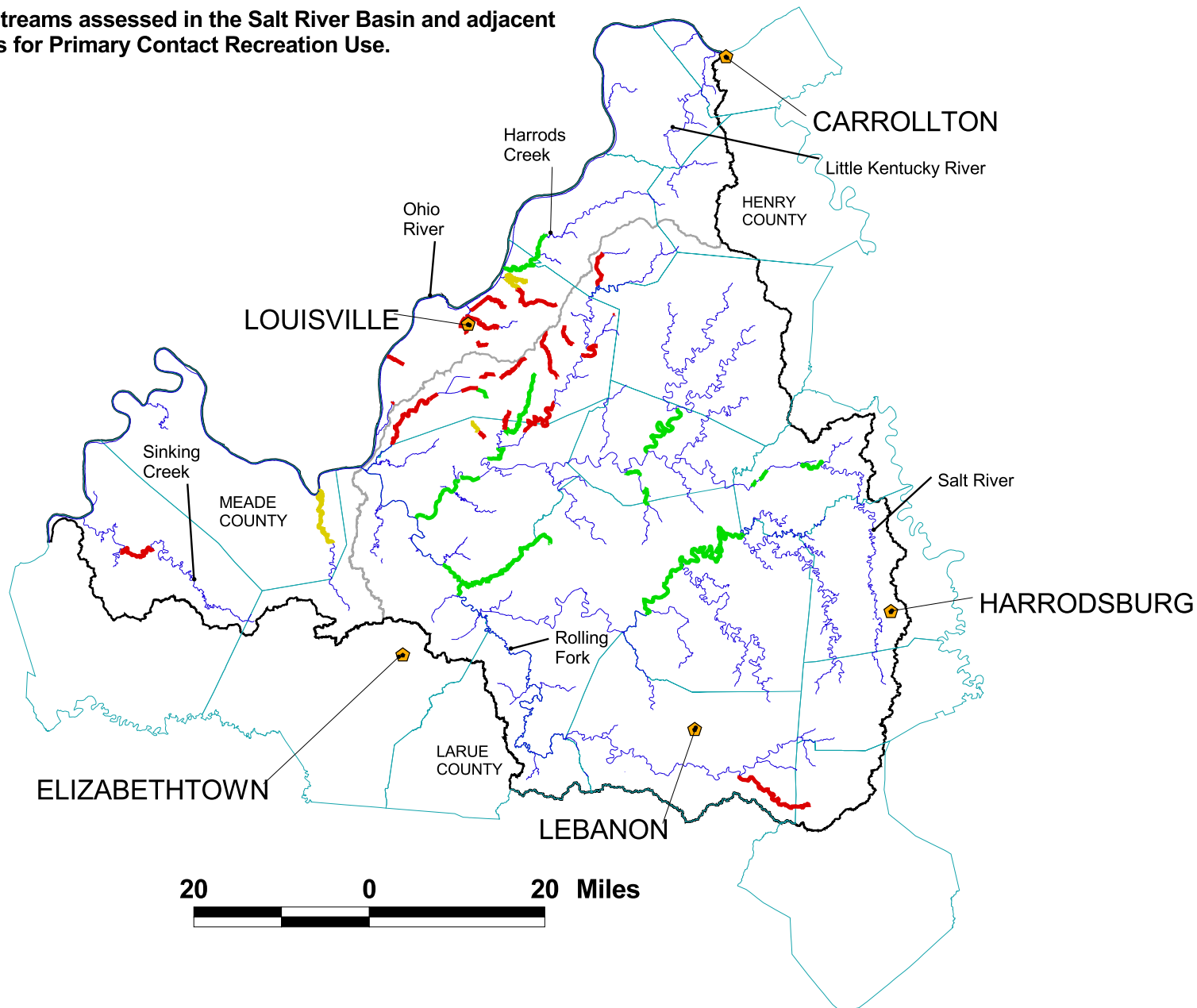
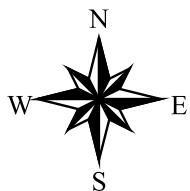
Source 2002 305(b) Report

Reach indexing results of streams assessed in the Salt River Basin and adjacent Ohio River minor tributaries for Drinking Water Use.



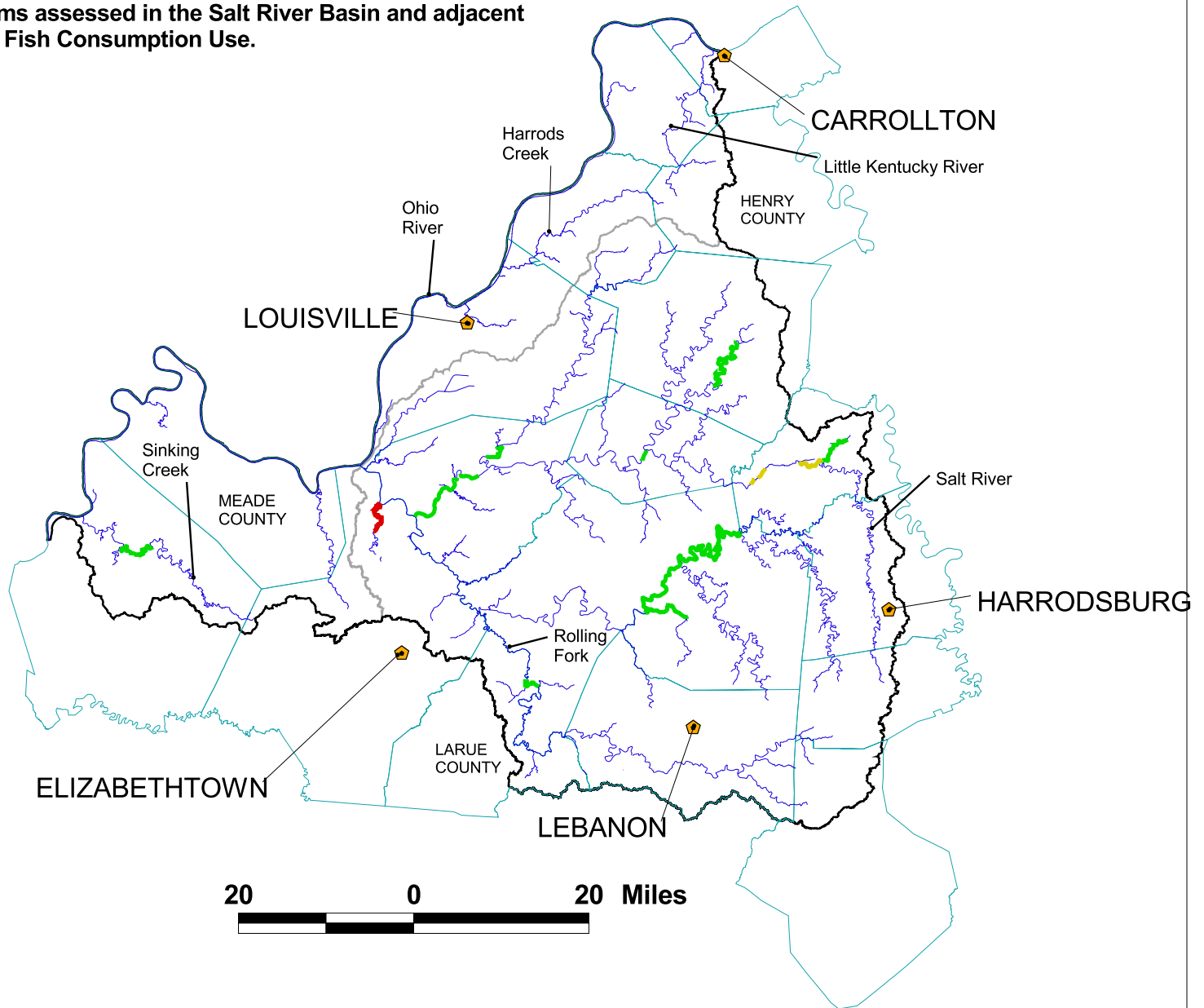
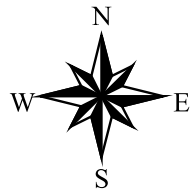
-  City
- Drinking Water**
-  Fully
-  Not supporting
-  Partial
-  Threatened
-  \geq 4th Order Streams
-  County Boundaries
-  Salt River Watershed
-  Ohio River Tributaries

Reach indexing results of streams assessed in the Salt River Basin and adjacent Ohio River minor tributaries for Primary Contact Recreation Use.



- City
- Primary Contact Recreation**
- Fully
- Not supporting
- Partial
- Threatened
- \geq 4th Order Streams
- County Boundaries
- Salt River Watershed
- Ohio River Tributaries

Reach indexing results of streams assessed in the Salt River Basin and adjacent Ohio River minor tributaries for Fish Consumption Use.



Source 2002 305(b) Report