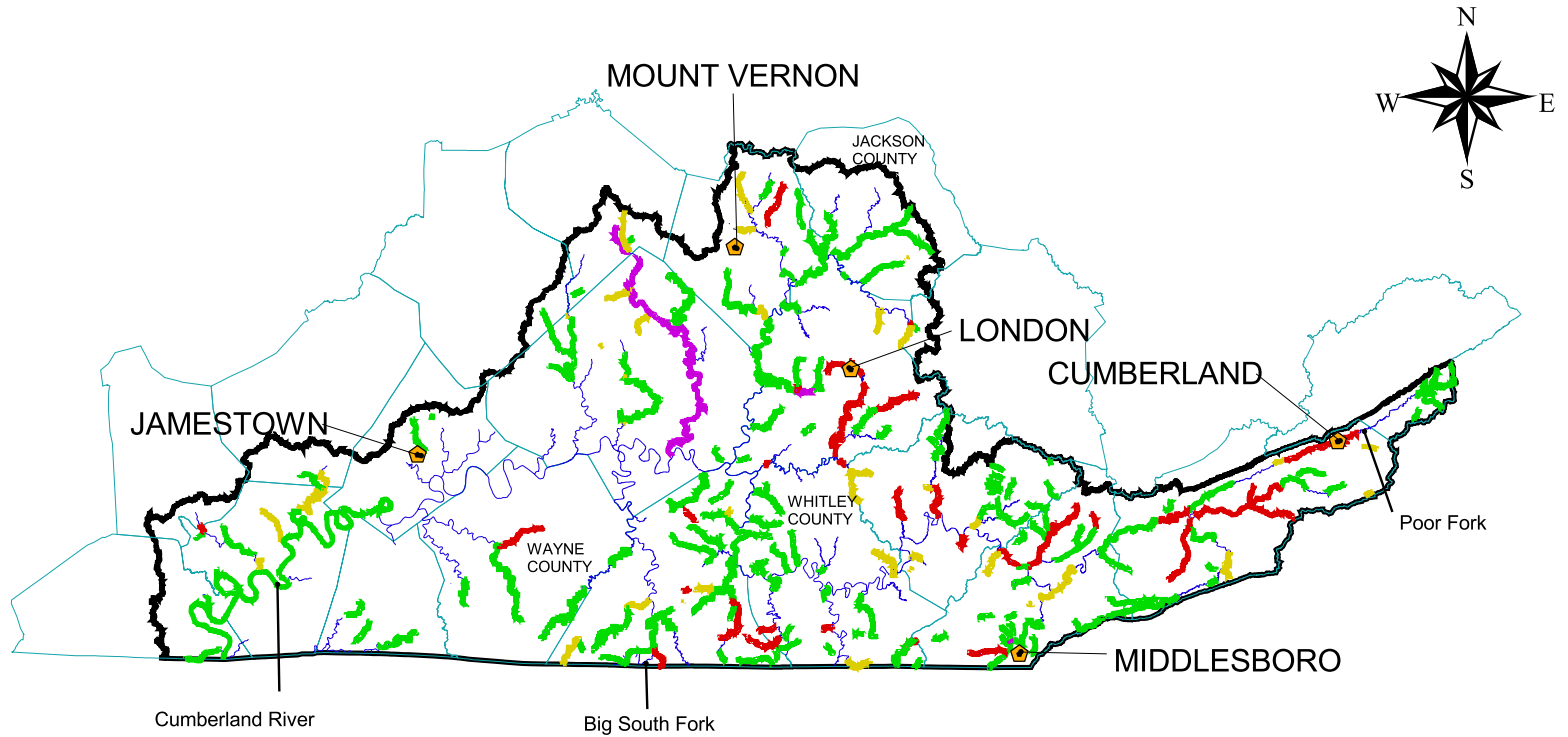


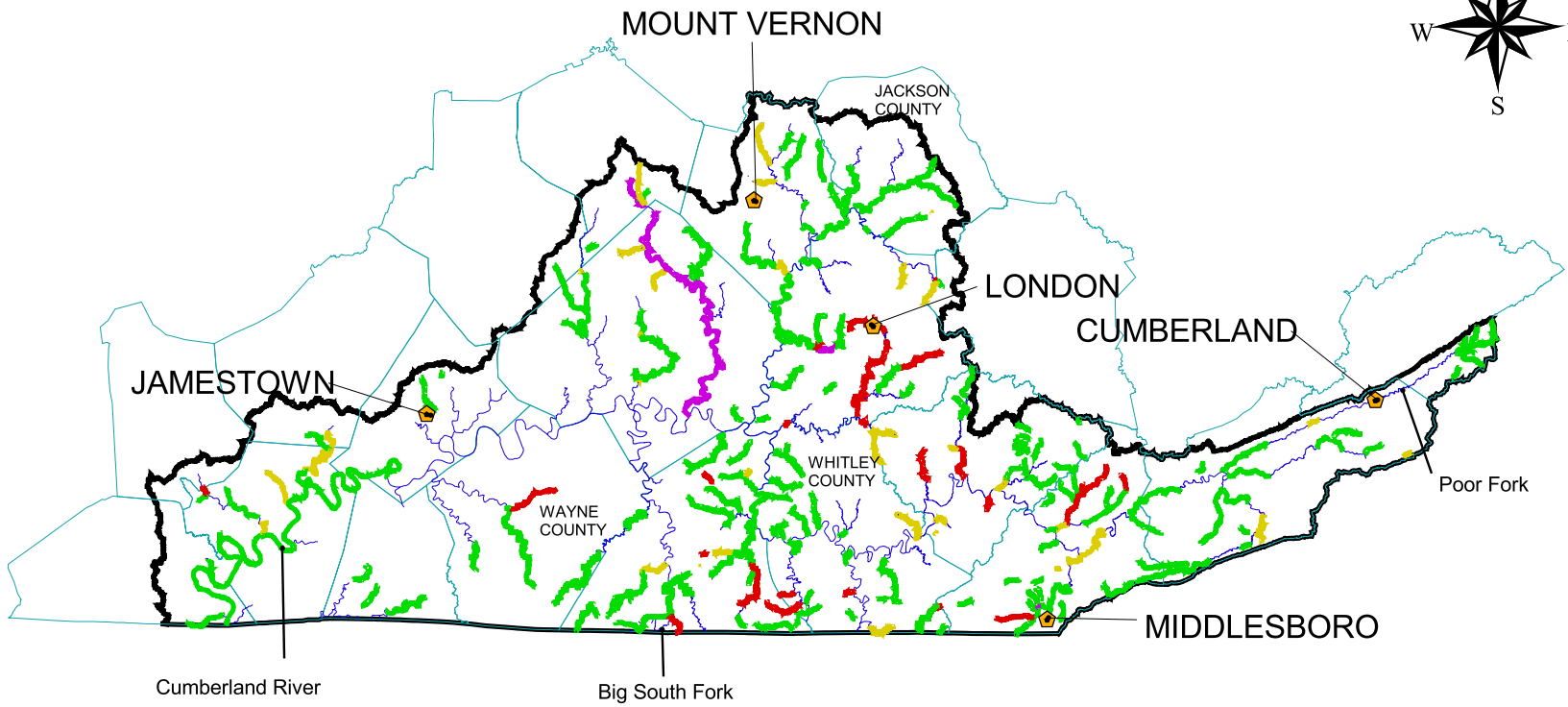
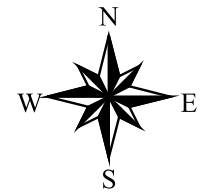
Combined overview of stream reach indexing for the four assessed uses (Aquatic Life Support, Drinking Water, Fish Consumption and Primary Contact Recreation) in the Upper Cumberland River Basin.



- City
- Overall
- Fully
- Not supporting
- Partial
- Threatened
- >= 4th Order Streams
- County Boundaries
- Watershed Boundary



Reach indexing results of streams assessed in the Upper Cumberland River Basin for Aquatic Life Use.

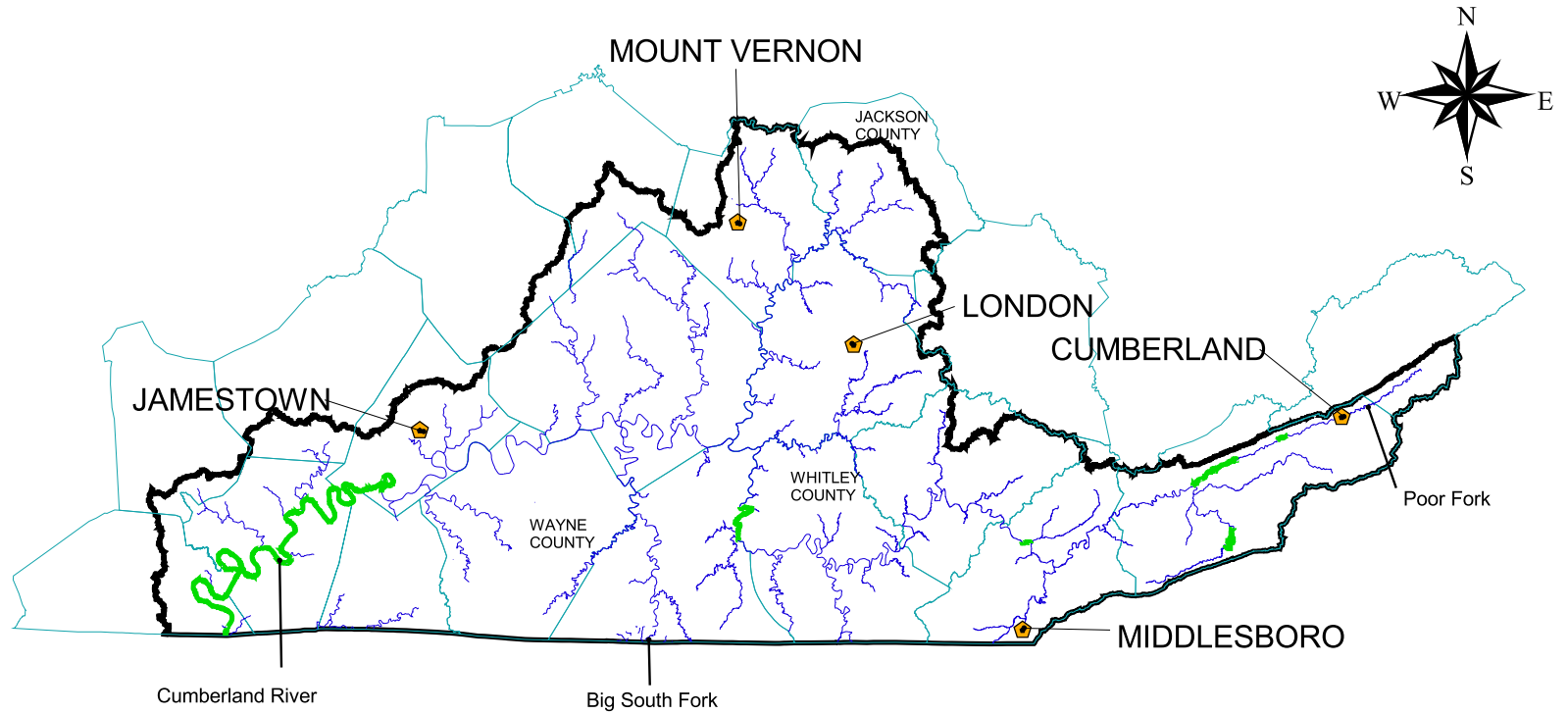


- City
- Aquatic Life**
- Fully
- Not supporting
- Partial
- Threatened
- \geq 4th Order Streams
- County Boundaries
- Watershed Boundary



Source 2002 305(b) Report

Reach indexing results of streams assessed in the Upper Cumberland River Basin for Drinking Water Use.

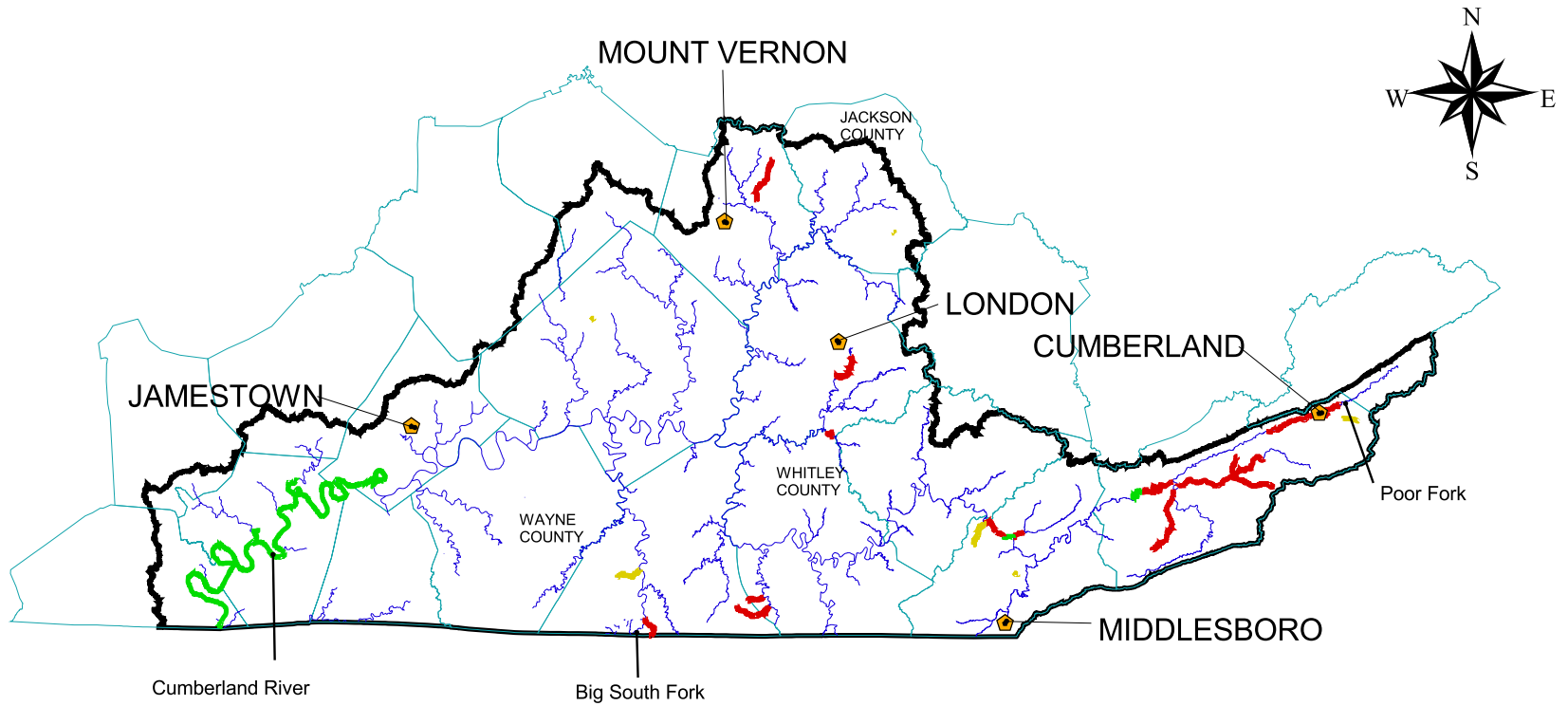


- City
- Drinking Water
 - Fully
 - Not supporting
 - Partial
 - Threatened
- >= 4th Order Streams
- County Boundaries
- Watershed Boundary



Source 2002 305(b) Report

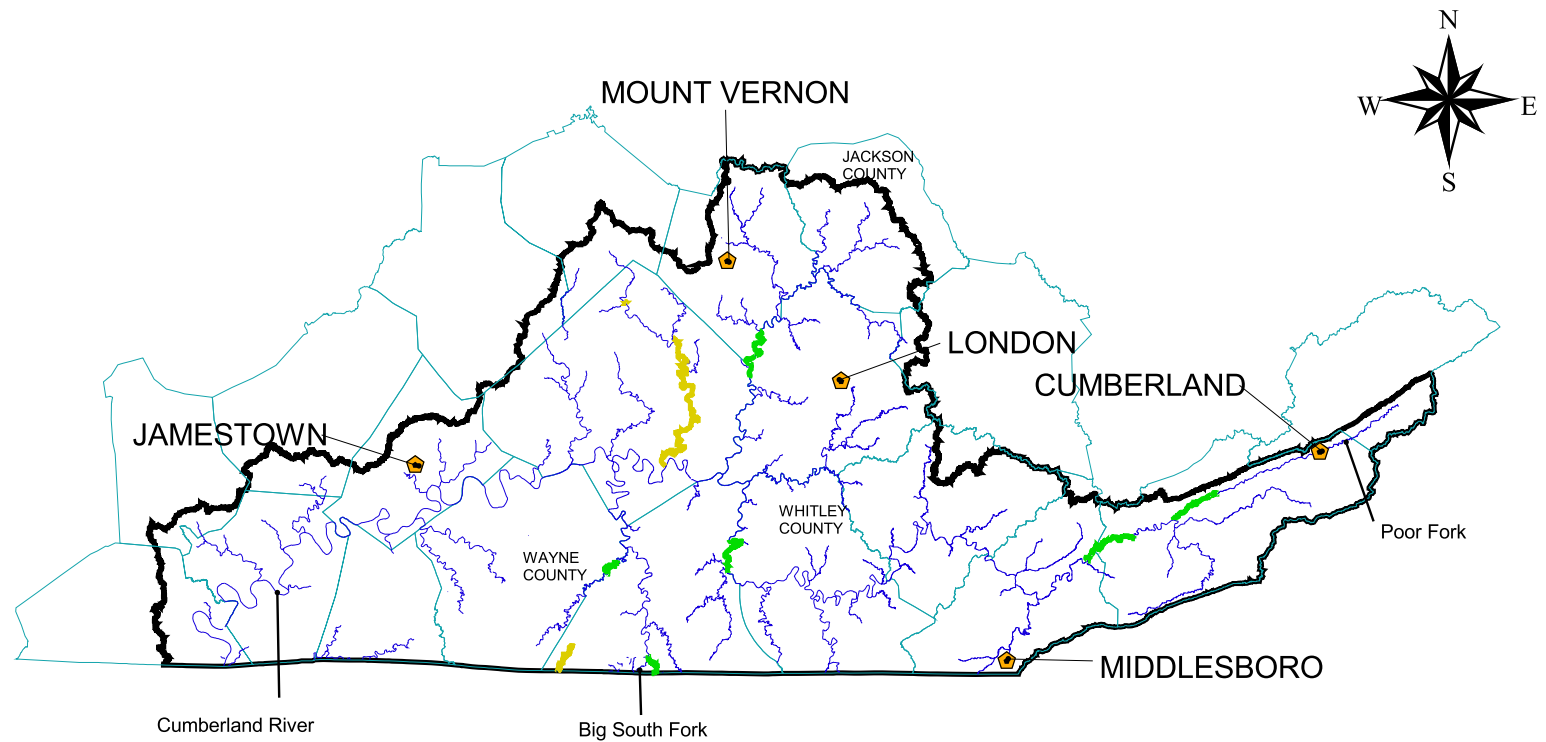
Reach indexing results of streams assessed in the Upper Cumberland River Basin for Primary Contact Recreation Use.



- City
- Primary Contact Recreation
 - Fully
 - Not supporting
 - Partial
 - Threatened
- >= 4th Order Streams
- County Boundaries
- Watershed Boundary

40 0 40 Miles

Reach indexing results of streams assessed in the Upper Cumberland River Basin for Fish Consumption Use.



- City
- Fish Consumption
 - Fully
 - Not supporting
 - Partial
 - Threatened
- >= 4th Order Streams
- County Boundaries
- Watershed Boundary

40 0 40 Miles