

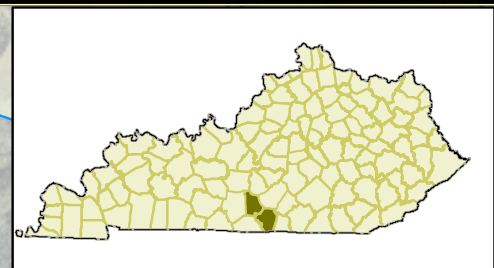
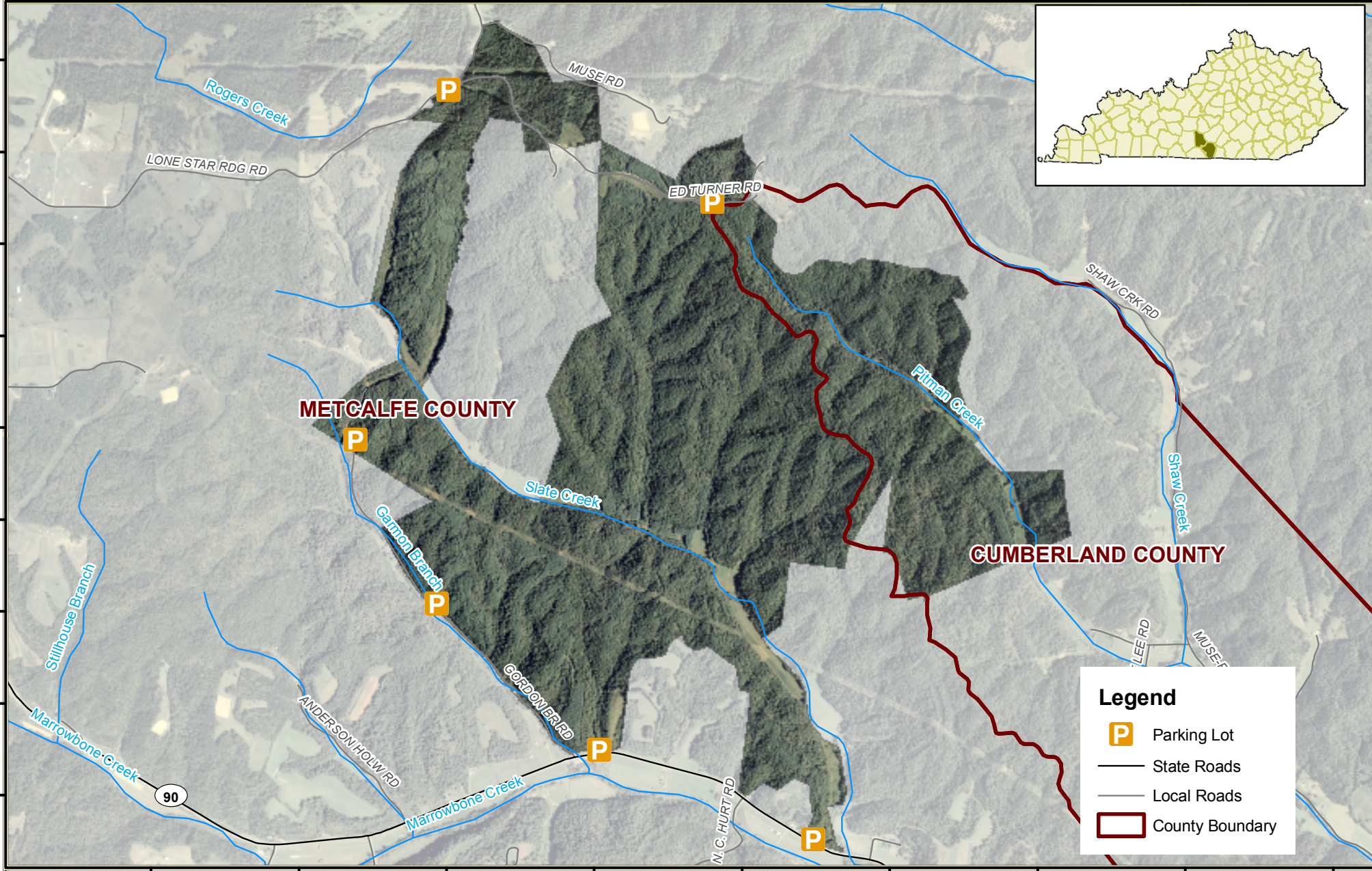


# Marrowbone State Forest and WMA

Acres 1,548  
Max Elev ft 1,120  
Min Elev ft 655



36°52'45"N  
36°52'30"N  
36°52'15"N  
36°52'0"N  
36°51'45"N  
36°51'30"N  
36°51'15"N  
36°51'0"N  
36°50'45"N



**Legend**

- Parking Lot
- State Roads
- Local Roads
- County Boundary

85°38'0"W 85°37'30"W 85°37'0"W 85°36'30"W 85°36'0"W 85°35'30"W 85°35'0"W 85°34'30"W 85°34'0"W



"Limitation of Liability: KY Dept. of Fish & Wildlife Resources does not know of any inaccuracies or defects in the information in this work and make "NO REPRESENTATIONS REGARDING THE FITNESS FOR USE OF THE INFORMATION OR DATA, FURNISHED HEREIN." Copyright."

11/19/2008



1:26,000

