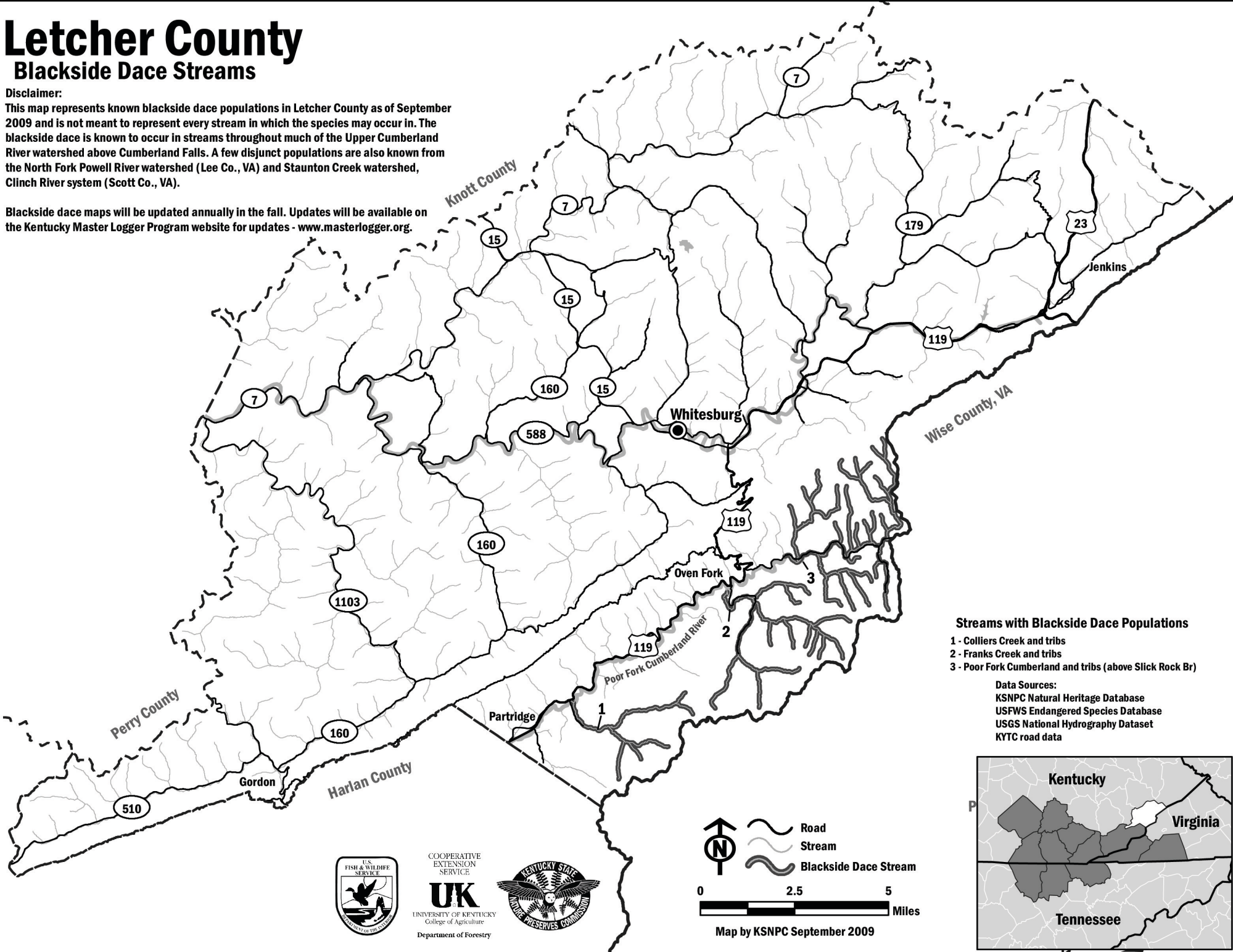


Letcher County

Blackside Dace Streams

Disclaimer:
 This map represents known blackside dace populations in Letcher County as of September 2009 and is not meant to represent every stream in which the species may occur in. The blackside dace is known to occur in streams throughout much of the Upper Cumberland River watershed above Cumberland Falls. A few disjunct populations are also known from the North Fork Powell River watershed (Lee Co., VA) and Staunton Creek watershed, Clinch River system (Scott Co., VA).

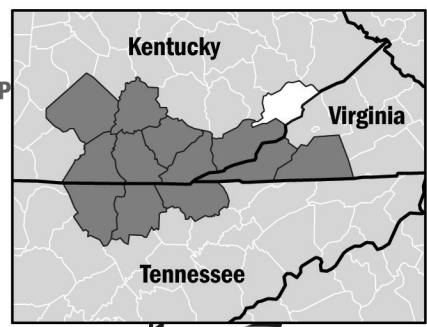
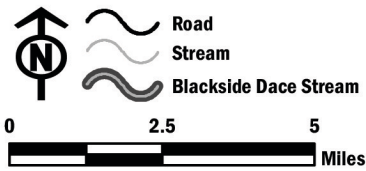
Blackside dace maps will be updated annually in the fall. Updates will be available on the Kentucky Master Logger Program website for updates - www.masterlogger.org.



Streams with Blackside Dace Populations

- 1 - Colliers Creek and tribs
- 2 - Franks Creek and tribs
- 3 - Poor Fork Cumberland and tribs (above Slick Rock Br)

Data Sources:
 KSNPC Natural Heritage Database
 USFWS Endangered Species Database
 USGS National Hydrography Dataset
 KYTC road data



Map by KSNPC September 2009