

# McCreary County

## Blackside Dace Streams

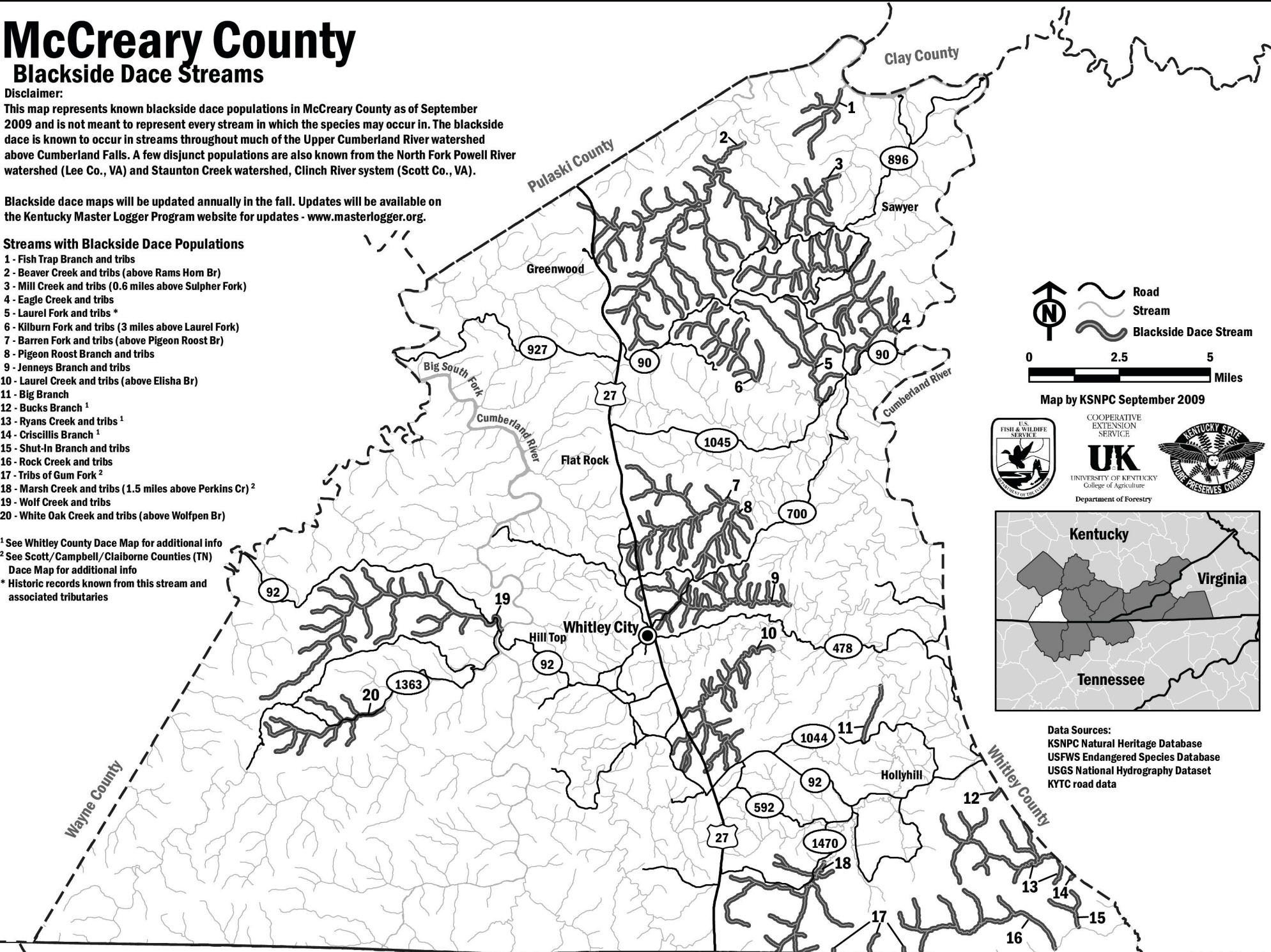
**Disclaimer:**  
 This map represents known blackside dace populations in McCreary County as of September 2009 and is not meant to represent every stream in which the species may occur in. The blackside dace is known to occur in streams throughout much of the Upper Cumberland River watershed above Cumberland Falls. A few disjunct populations are also known from the North Fork Powell River watershed (Lee Co., VA) and Staunton Creek watershed, Clinch River system (Scott Co., VA).





Blackside dace maps will be updated annually in the fall. Updates will be available on the Kentucky Master Logger Program website for updates - [www.masterlogger.org](http://www.masterlogger.org).

### Streams with Blackside Dace Populations

- 1 - Fish Trap Branch and tribs
- 2 - Beaver Creek and tribs (above Rams Horn Br)
- 3 - Mill Creek and tribs (0.6 miles above Sulpher Fork)
- 4 - Eagle Creek and tribs
- 5 - Laurel Fork and tribs \*
- 6 - Kilburn Fork and tribs (3 miles above Laurel Fork)
- 7 - Barren Fork and tribs (above Pigeon Roost Br)
- 8 - Pigeon Roost Branch and tribs
- 9 - Jenneys Branch and tribs
- 10 - Laurel Creek and tribs (above Elisha Br)
- 11 - Big Branch
- 12 - Bucks Branch <sup>1</sup>
- 13 - Ryans Creek and tribs <sup>1</sup>
- 14 - Criscillis Branch <sup>1</sup>
- 15 - Shut-In Branch and tribs
- 16 - Rock Creek and tribs
- 17 - Tribs of Gum Fork <sup>2</sup>
- 18 - Marsh Creek and tribs (1.5 miles above Perkins Cr) <sup>2</sup>
- 19 - Wolf Creek and tribs
- 20 - White Oak Creek and tribs (above Wolfpen Br)

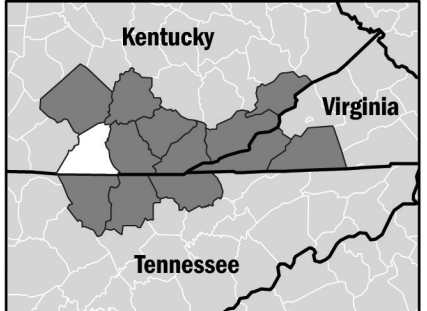
<sup>1</sup> See Whitley County Dace Map for additional info  
<sup>2</sup> See Scott/Campbell/Claiborne Counties (TN) Dace Map for additional info  
 \* Historic records known from this stream and associated tributaries




 Road  
 Stream  
 Blackside Dace Stream

0 2.5 5 Miles

Map by KSNPC September 2009



**Data Sources:**  
 KSNPC Natural Heritage Database  
 USFWS Endangered Species Database  
 USGS National Hydrography Dataset  
 KYTC road data